



How to build your robot

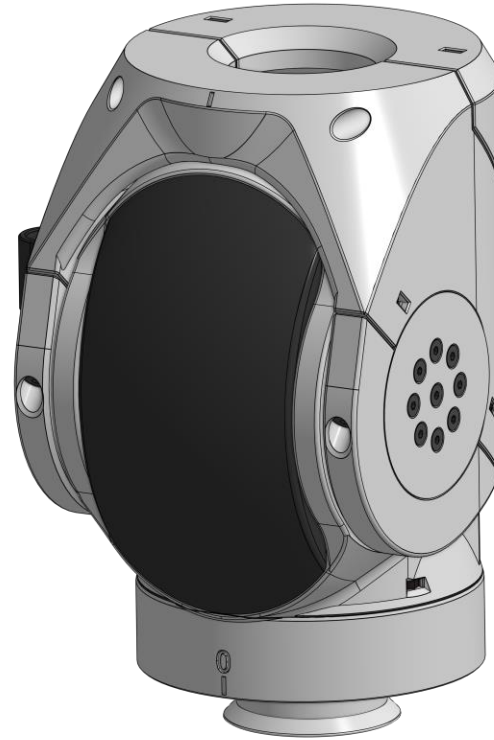
www.pib.rocks/build

assembly instructions for:

Elbow

pib#4 advanced

Assembly in this tutorial is for Elbow
right, for elbow left it will be mirrored



PRINT

BUILD

DEVELOP

YOUR OWN ROBOT

Printable and pre-assembled parts

Pib's elbow consists of **12 printable parts** and is assembled in **14 steps**.

In order to construct the elbow, you will need to print the parts as seen in the table.

Please note: For better readability we use the abbreviations in the tutorial: C08 instead of C08-Central_rotator_bracket.

Printable parts

C15s-Central_rotator_motor_connector

C09s-Central_rotator_connector

C77s-Motor_housing_central_rotator

Printable parts

C39-Elbow_upper_shell

C36s-Elbow_lower_shell

C31s-Elbow_shaft_motor

C35R-Elbow_clamp_right

C38-Elbow_cover

C37s-Elbow_rotator_bracket

C40-Elbow_upper_shell_lock

C34s-Elbow_motor_connection

C35L-Elbow_clamp_left

C32-Elbow_axis_cable

C74-Wire_holder

Non-printable parts

You will also need the following non-printable parts from our pib.Box Master.

If you do not have it yet, you can buy in our shop

<https://shop.pib.rocks>.

Non-printable parts

1 x **E18 STS3095** Servo

1 x **E19 STS3215** Servo

1 x **M18** Metal-motor-Adapter-L

2 x **M03** medium sized ballbearings (10 x 19 x 7mm)

23 x **S01** M3 nuts

4 x M2 6 mm screws

4 X M2.5 8mm screws

2 x **S03** M3 8 mm screws

14 x **S08** M3 20mm screws

1 x **S10** M3 25mm screws

5 x **S11** M3 30mm screws

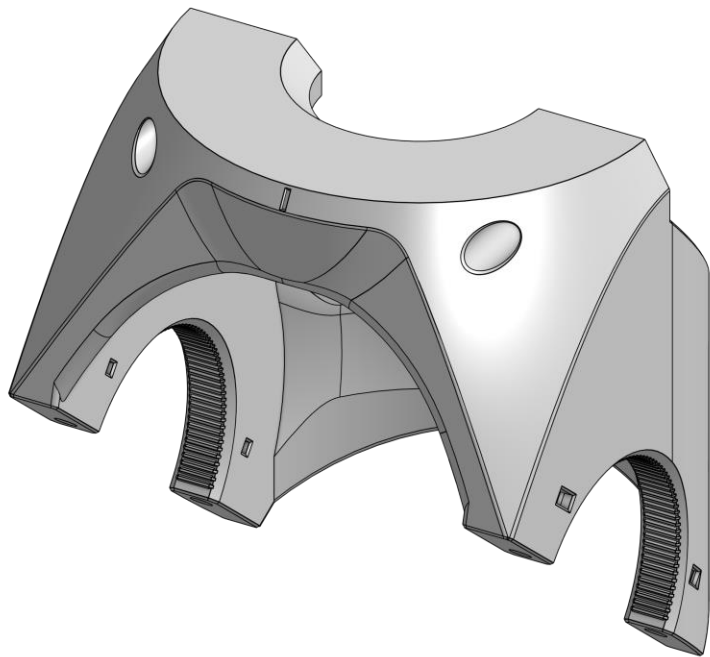
15 x **S13** M3 40mm screws

2 x **M06** Ballbearing_Axial (70x50x3)

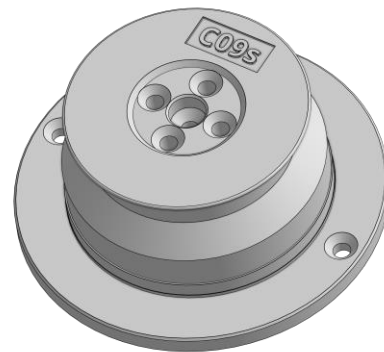
4 x **M07** Thrust_Bearing (70x50x1)

Printable parts - Overview

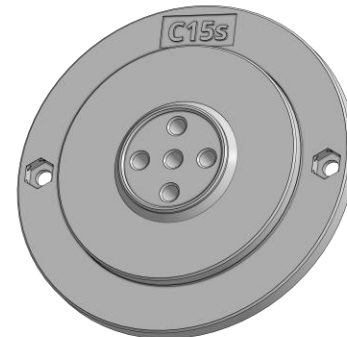
C39-Elbow_upper_shell



C09s-Central_rotator_connector

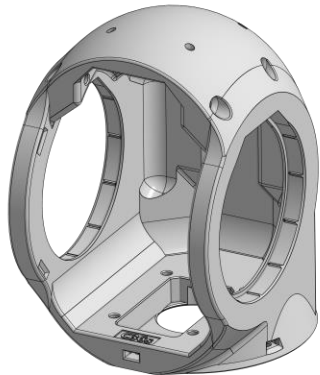


C15s-Central_rotator_motor_connector



Printable parts - Overview

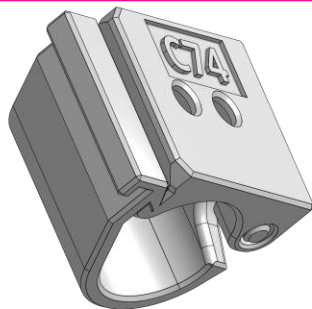
C36-Elbow_lower_shell



C31s-Elbow_shaft_motor



C74-Wire_holder



C35R-L-Elbow_clamp_right-left

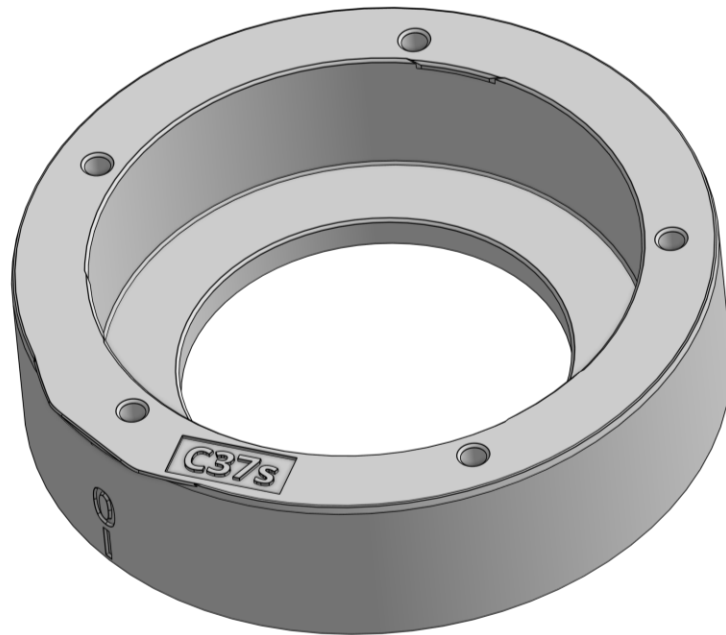


Printable parts - Overview

C38-Elbow_cover



C37s-Elbow_rotator_bracket



Build it better: our suggestion for assembling pib



We recommend **tools** for each step. These are a suggestion, you can of course also use other tools.



1-5

We have categorized each step according to its **difficulty** - from **1-5** (1 being the easiest, 5 the hardest)



We also show you which **non-printable parts** you need for each step

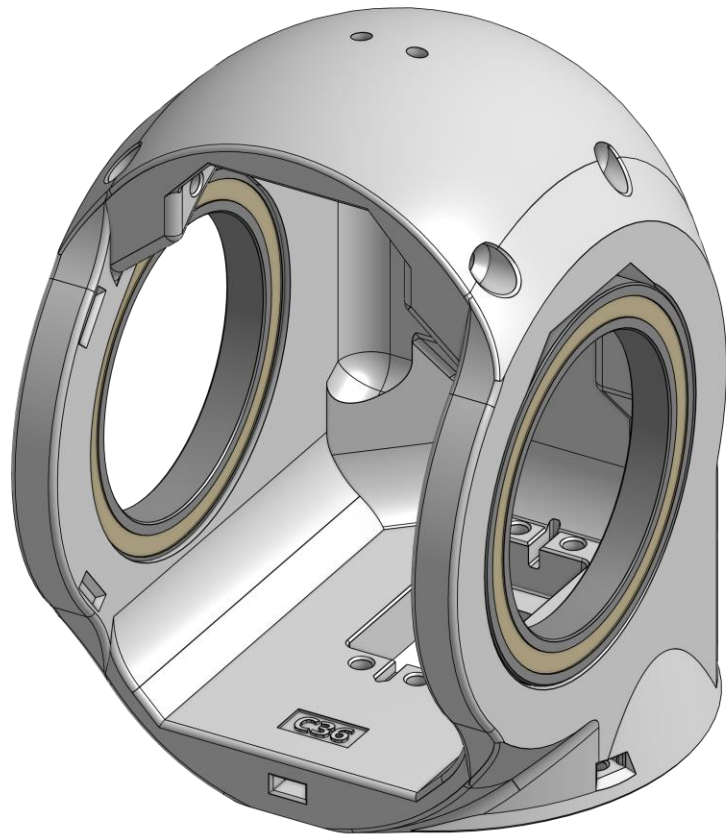
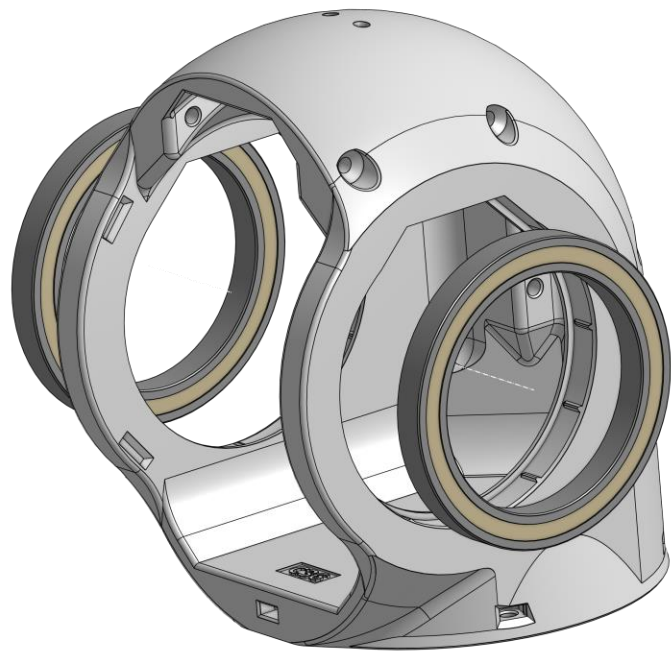
Step 0

Make sure all motors in this tutorial are calibrated according to tutorial "**step 1c motor calibration**"



Step 1a

Place 2 **M20** in the shown spots in **C36**.



Step 1b

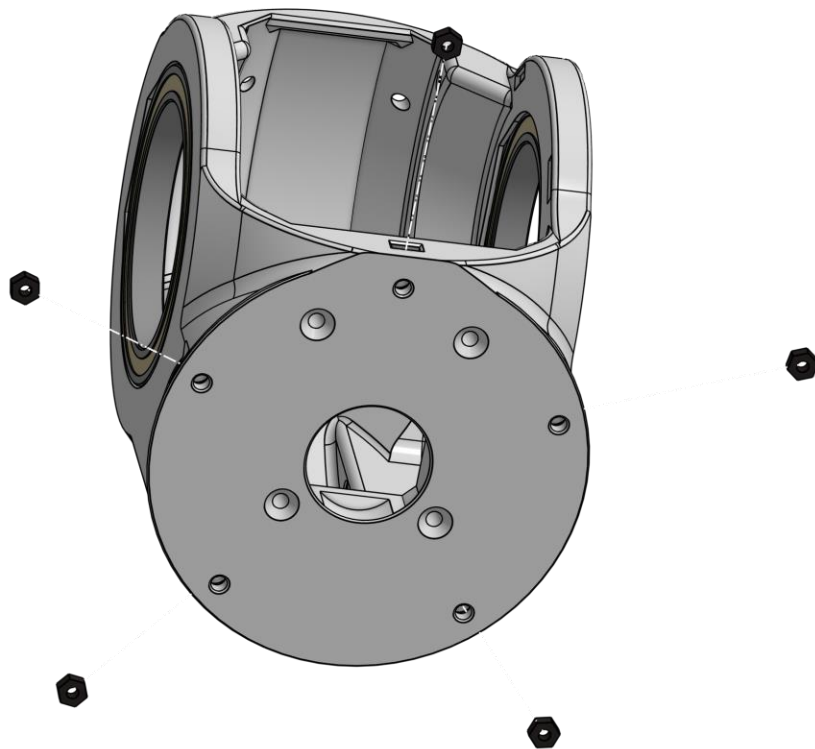
Place **5 x M3 nuts** in the shown spots in **C36**.



1

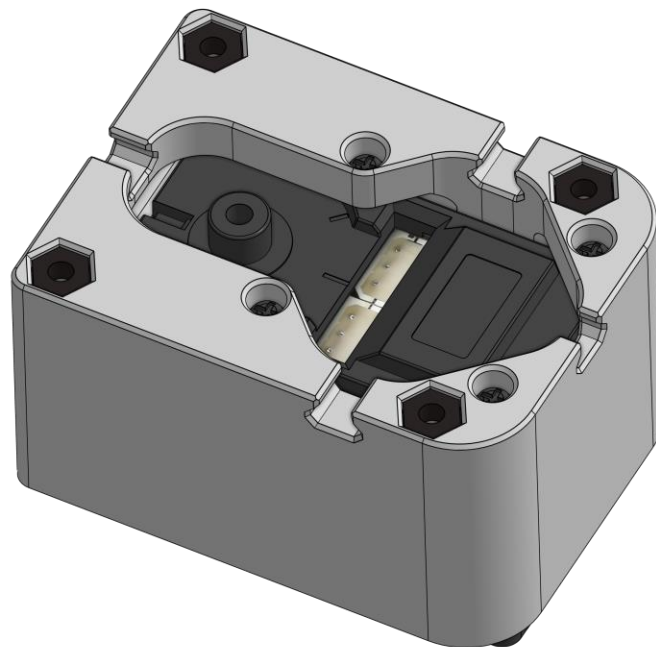
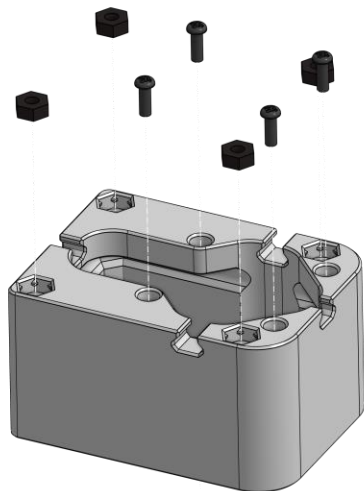


5x



Step 1c

Attach **E19** to **C77s** using **4 x M2 10mm screws** and add **4 x M3 nuts**



Step 1d

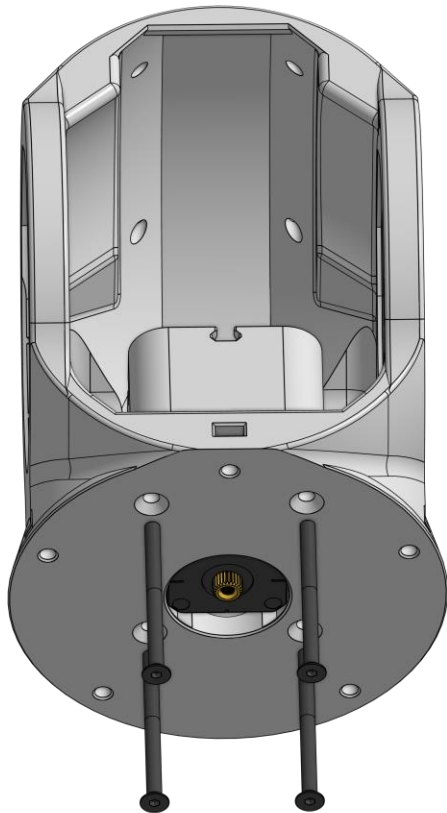
Attach previous assembly to **C36s** using **4 x M3 40mm** screws



1



4x



Step 1e

Connect **E18** to **C34s** using **4 x M2 10mm screws** and add **4 M3 nuts**



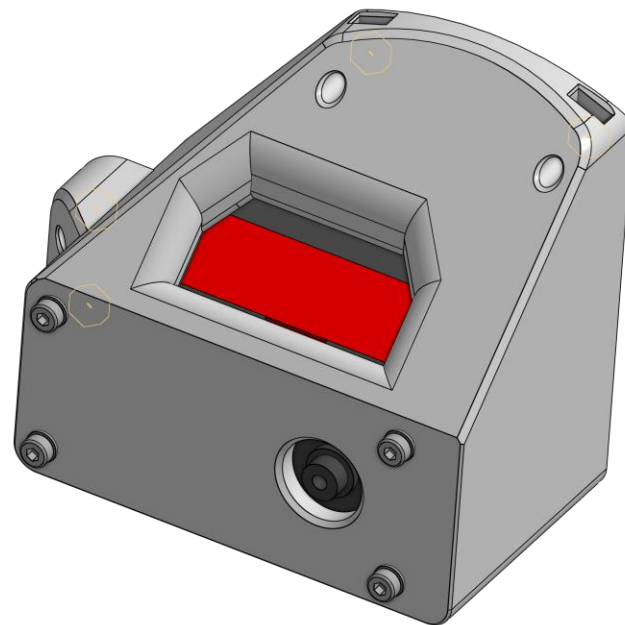
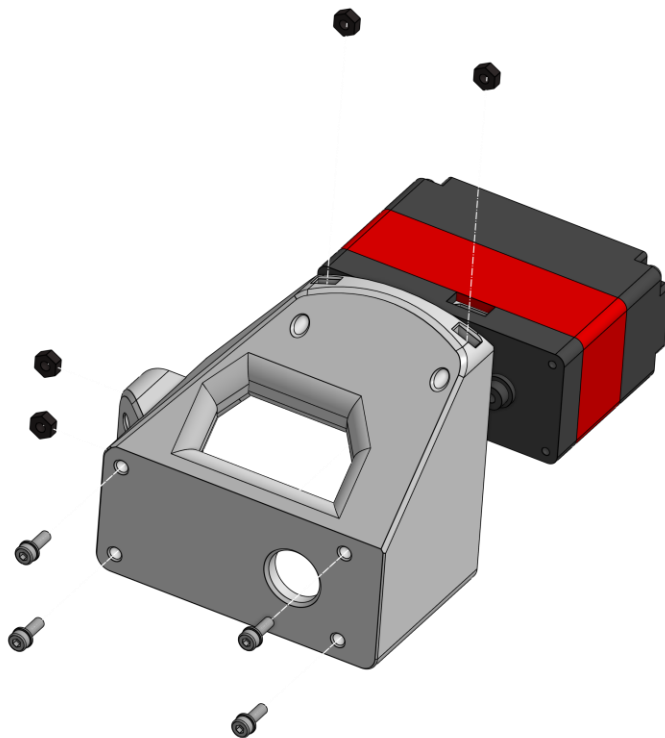
1



6x



2x



Step 2

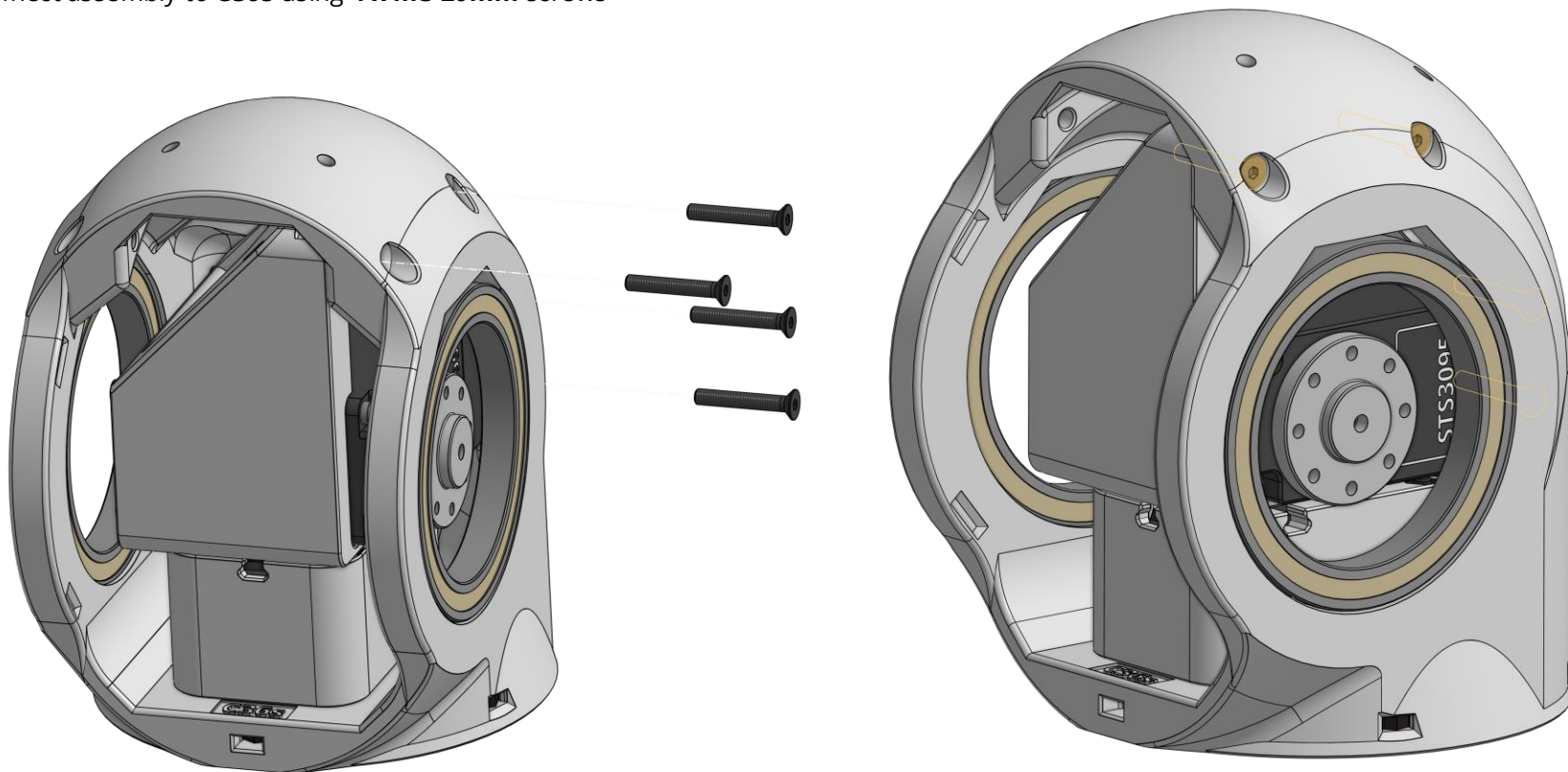
Connect assembly to **C36s** using **4 x m3 20mm** screws



1

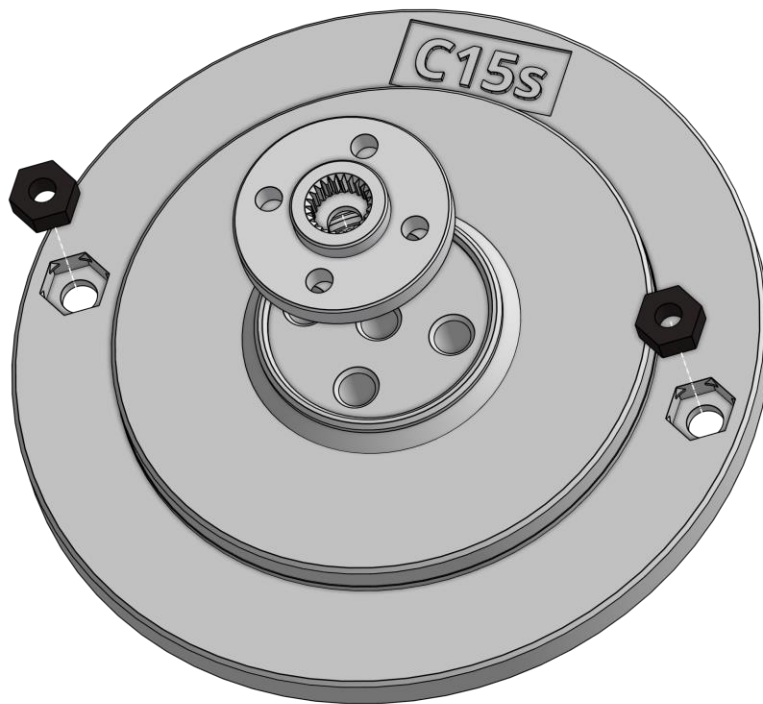


4x



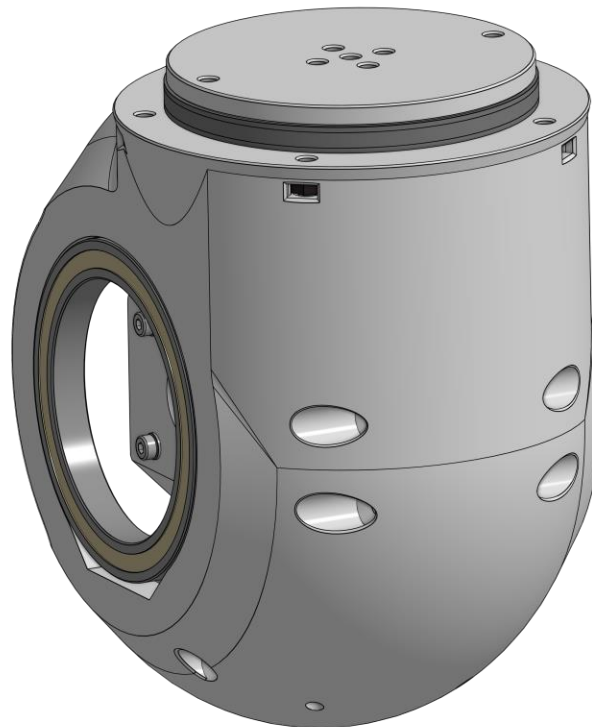
Step 3a

Insert **2 x M3 nuts** and **M18** in **C15s**



Step 3b

Place **M06** and 2 **M07** on top of **C15s**, then connect the assembly to **E18**



Step 3c

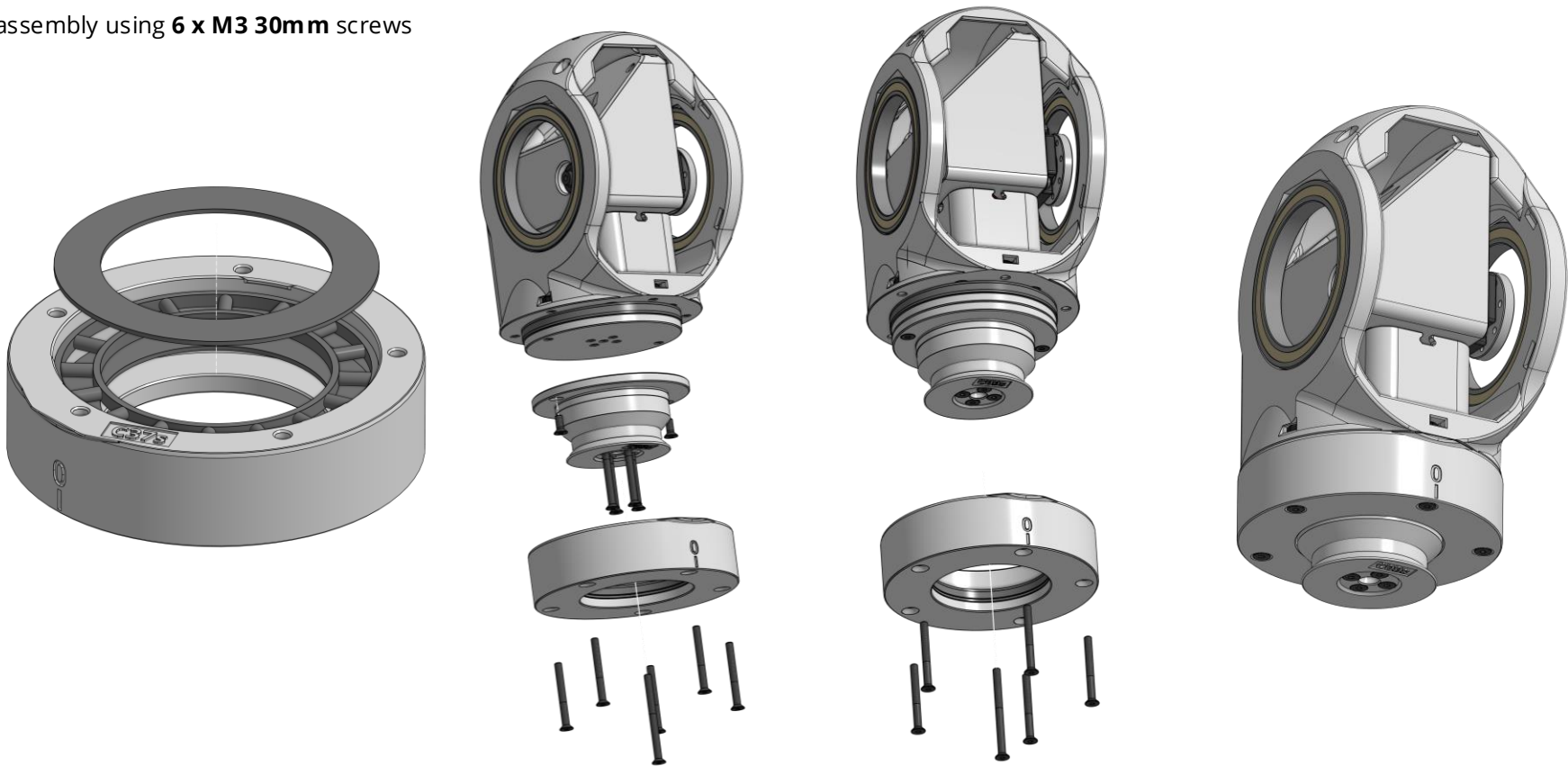


1



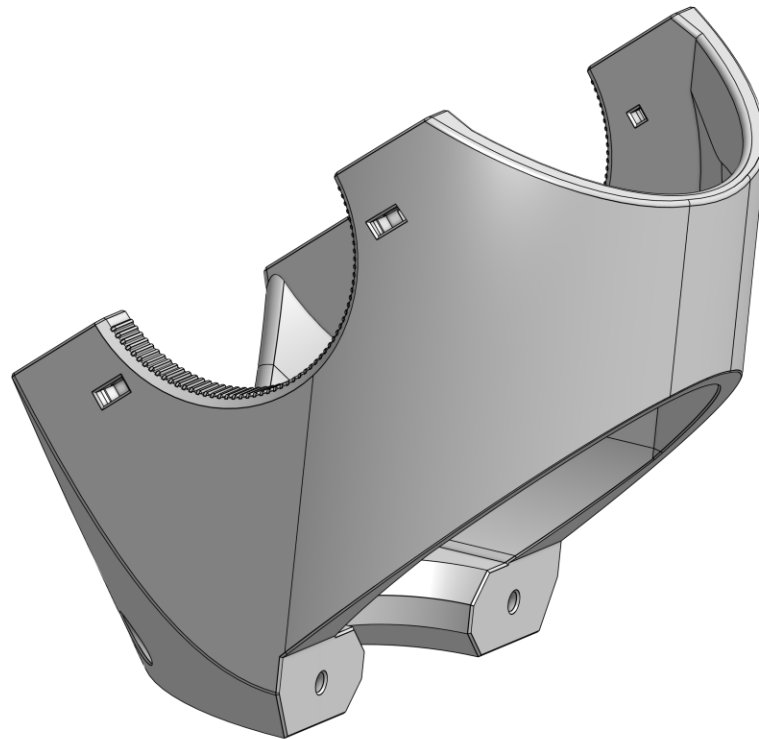
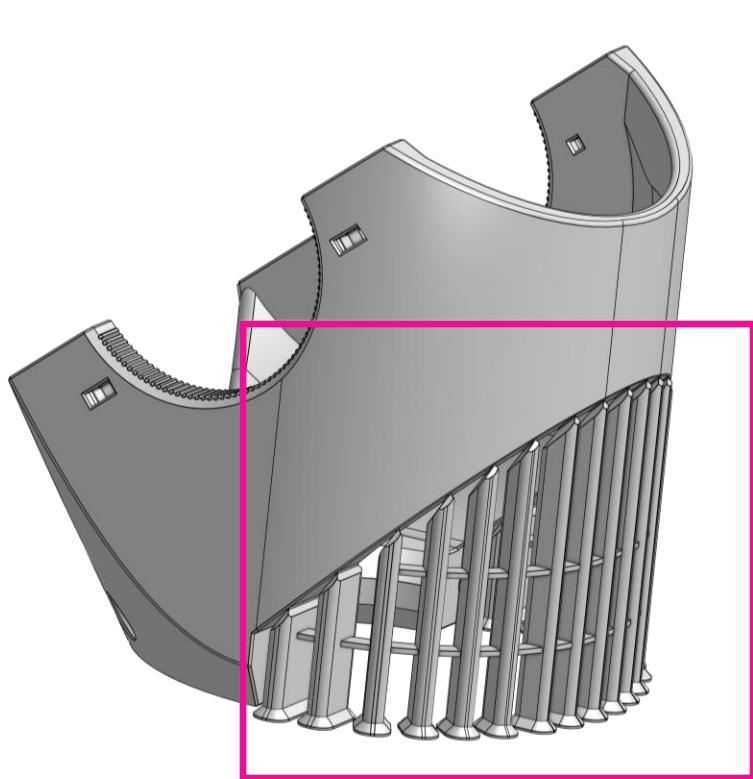
5x

Place **M06** and 2 **M07** in **C37s**, then connect **C37s** to elbow using **2 x M3 30mm** screws and **5 x M3 40mm** screws. Finally connect **C37s** to the assembly using **6 x M3 30mm** screws



Step 4

Remove print helpers gently from **C39**.



Step 5

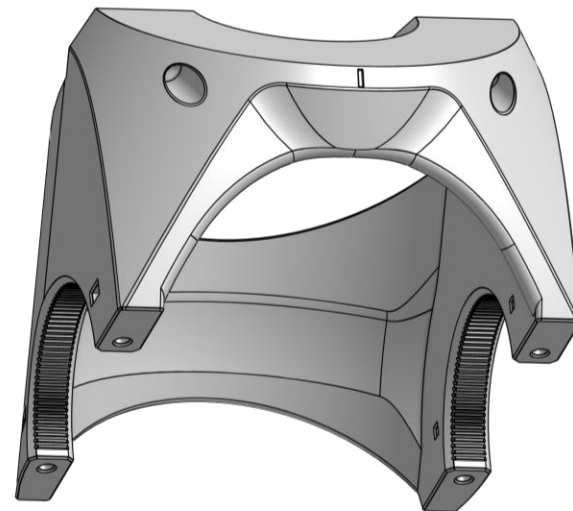
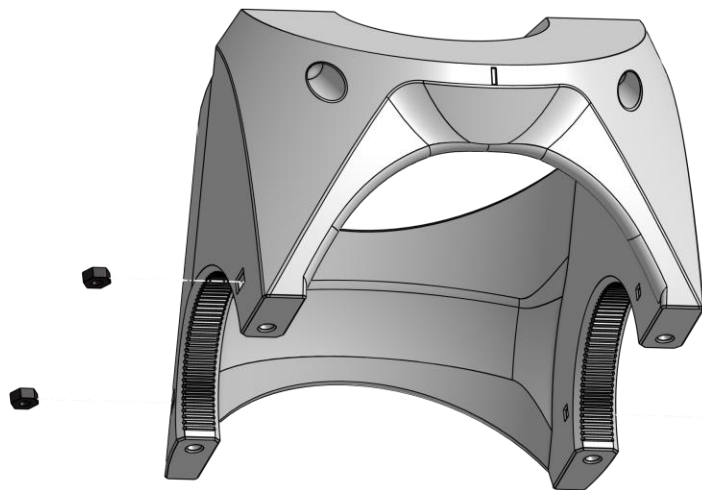
Place **4 x M3 nuts** in **C39**



1



4x



Step 6

Connect **C74** to **C32** using **2 x M3 nuts** and **2 x M3 20mm** screws



2x



2x



Step 7

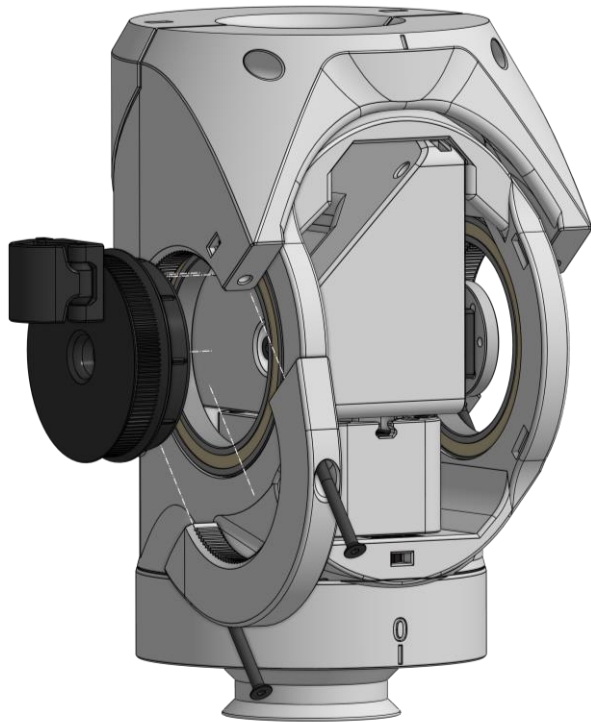
Connect upper elbow to lower elbow using **C32** , **C35-L** and **2 x M3 40mm** screws.



3

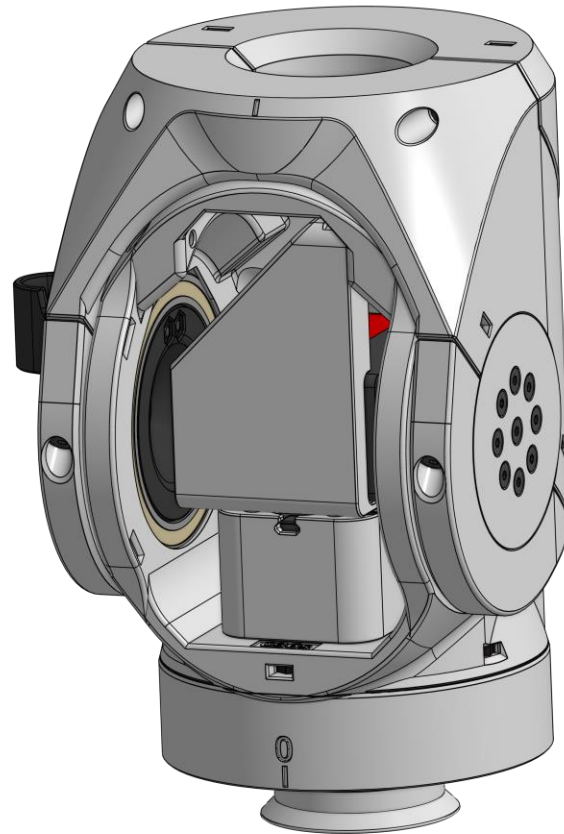
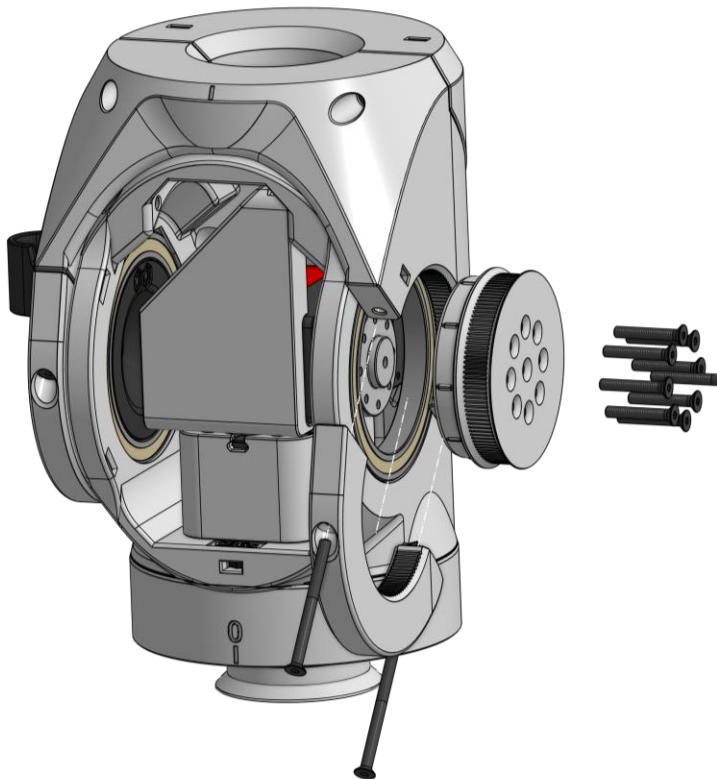


2x



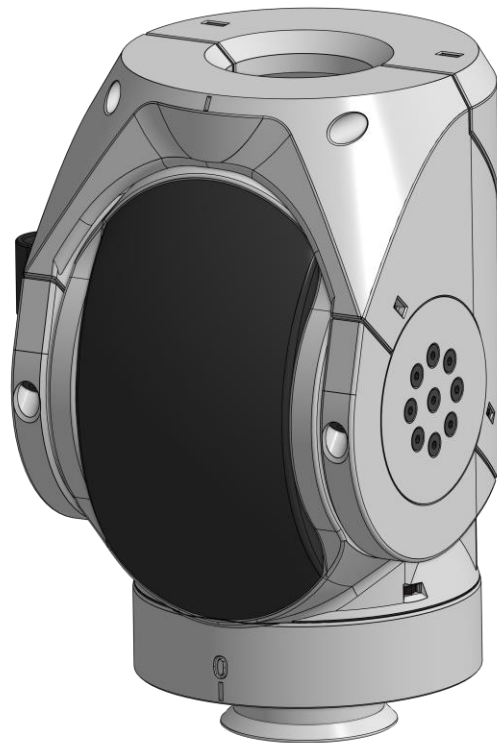
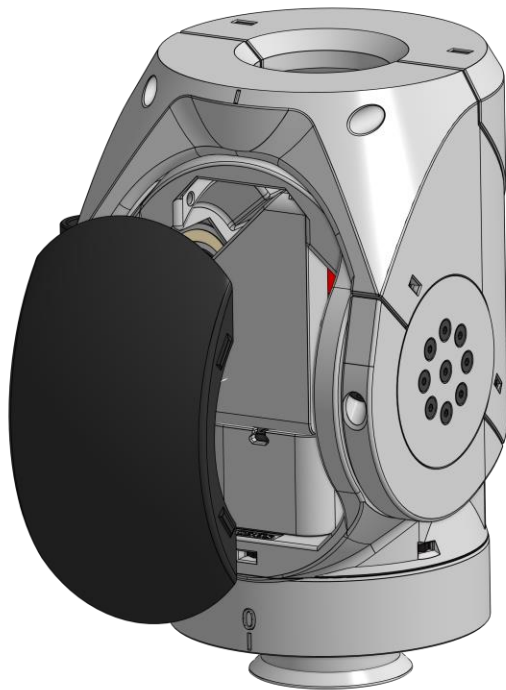
Step 8

Connect **C31s** and **C35-R** to elbow using **2 x M3 40mm** and **9 x M3 20mm** screw.



Step 9

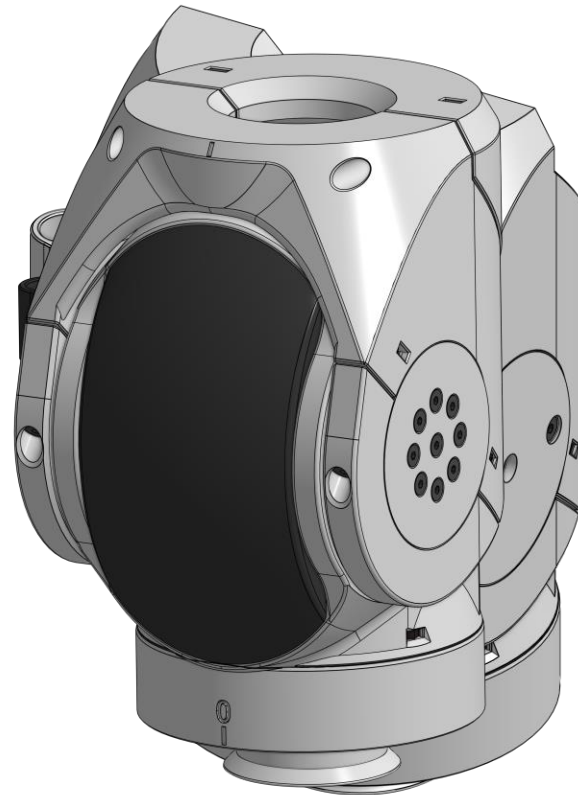
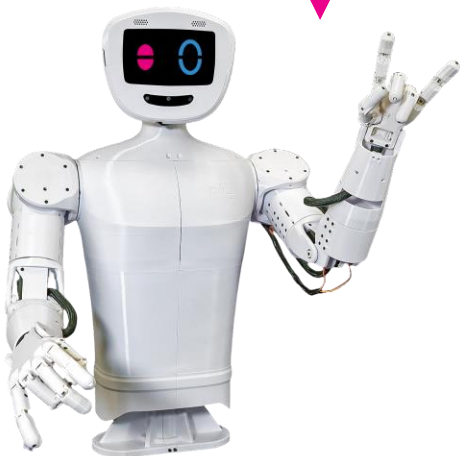
Attach **C38** to assembly.



Congratulations

You did a great job, pib's elbow is assembled!

Well done!



Do you need support?

Or do you need our pib.Box with all non-printable parts?

Or maybe you have some new ideas and improvements?

Please contact us.



team@pib.rocks

Send us an email.



discord.com/invite/GRdpyeDu7P

Join us on Discord.



shop.pib.rocks

Order non-printable parts for pib.