



## How to build your robot

[www.piib.rocks/build](http://www.piib.rocks/build)

assembly instructions for:

### UPPER BODY

v2025



PRINT

BUILD

DEVELOP

YOUR OWN ROBOT

## Printable parts

### Printable parts

4 x **B48**-Hinge

2 x **B49**-Hinge\_Plate

**B51**-Servo\_Array\_Scaffold

2 x **B52**-Tube\_Holder\_Side

**B53**-Tube\_Holder\_Top

**B55**-Logo\_edu

2 x **B56**-Speaker\_spring

2 x **B57**-Printed\_washers

**B47**-Power\_holder

### Printable parts

**B19**-Flat\_stand\_right

**B20**-Flat\_stand\_left

7 x **B25**-Wire\_connector

6 x **B26**-Wire\_connector\_pawl

7 x **B27**-Wire\_connector\_mount

1 x **B31**-Wire\_connector\_pawl\_forearm

**B41-L**-Clavicle\_left

**B41-R**-Clavicle\_right

**B42-L**-Ribcage\_Left

**B42-R**-Ribcage\_Right

**B43-L**-Ribcage\_Lower\_Left

**B43-R**-Ribcage\_Lower\_Right

**B44**-Electronics\_back

**B45**-Electronics\_base

**B46**-Power\_back

## Non-printable parts

You will also need the following non-printable parts from our pib.Box Master.

If you do not have it yet, you can buy in our shop  
<https://shop.pib.rocks>.

### Non-printable parts

3 x **E03**-TinkerForge ServoBricklet

12 x **E07**-MG996R

2 x **E09**-DS3225

1 x **E16**-RPi Power Supply

3 x **E25**-RGB buttons

2 x **E26**-Speakers

1 x **E24**-Relay

132 x **S01** M3 nuts

12 x **S02** M3 6 mm screws

6 x **S03** M3 8 mm screws

62 x **S04** M3 10 mm screws

16 x **S05** M3 12 mm screws

10 x **S06** M3 16 mm screws

12 x **S08** M3 20 mm screws

2 x **S09** M3 22 mm screws

4 x **S10** M3 25 mm screws

2 x **S11** M3 30 mm screw

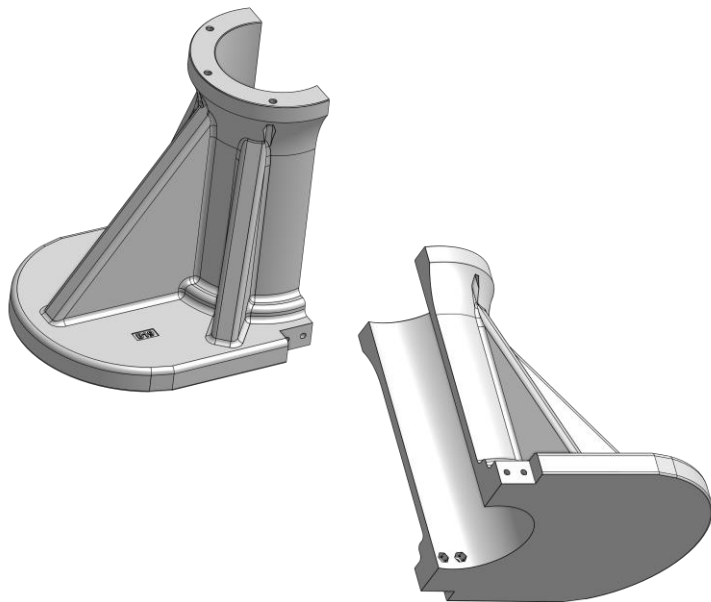
12 x **S13** M3 40 mm screws

4 x **M08** 20 mm metal rods

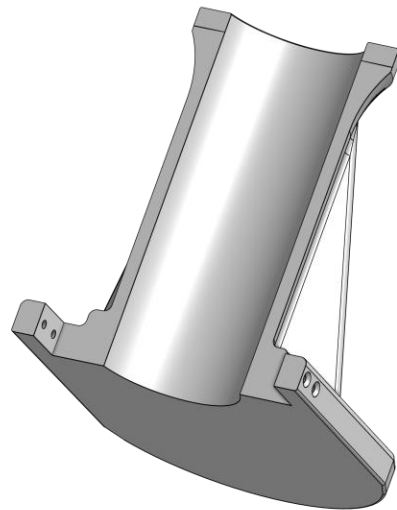
8 x **M13** Distancer

## Printable parts - Overview

**B19-Flat\_stand\_right**

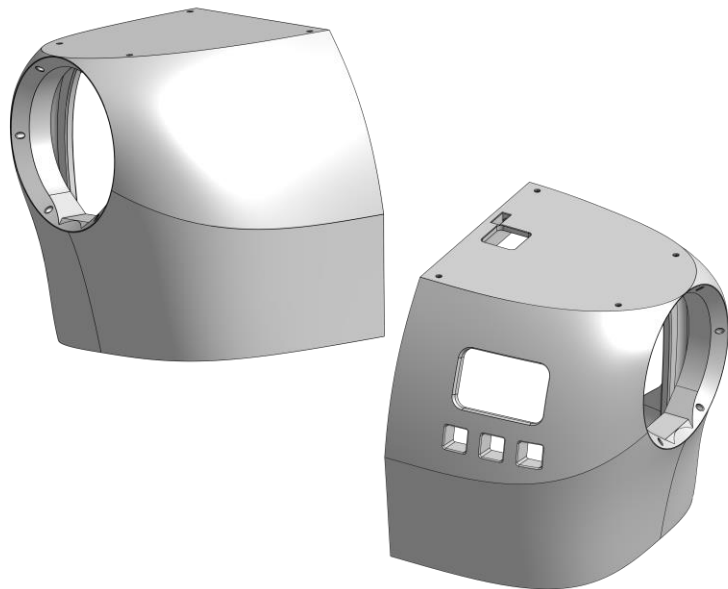


**B20-Flat\_stand\_left**



## Printable parts - Overview

**B41-L/-R-Clavicle\_Left/Right**

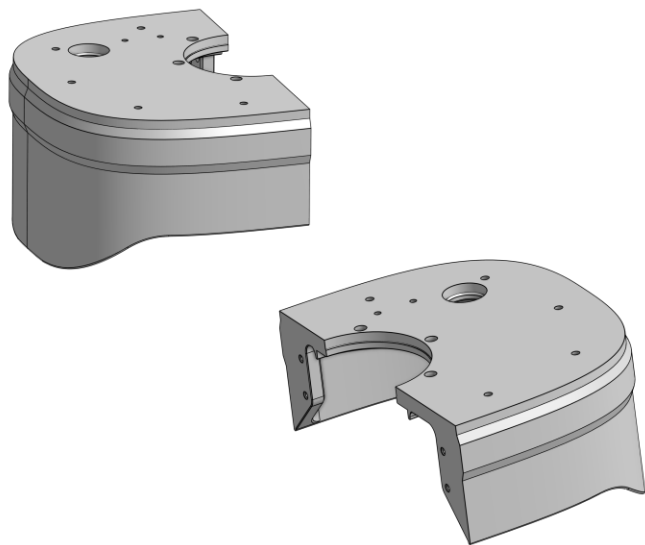


**B42-L/-R-Rip cage\_Left/Right**

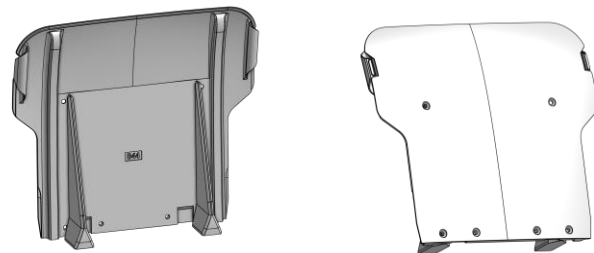


## Printable parts - Overview

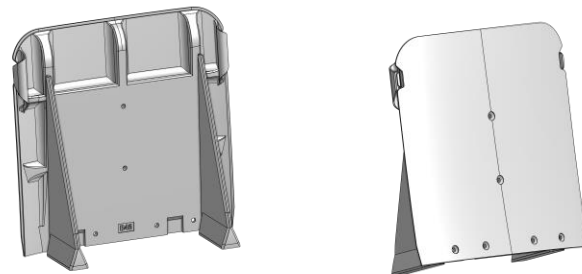
**B43-L/-R-Ripcage\_Lower\_Left/Right**



**B44-Electronics\_back**

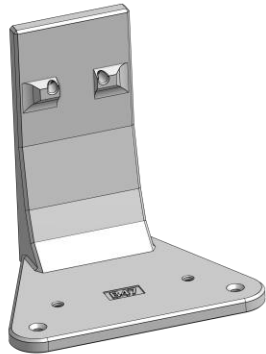


**B46-Power\_back**

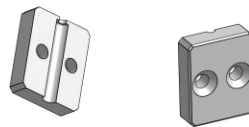


## Printable parts - Overview

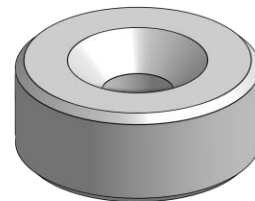
**B47-Power\_Holder**



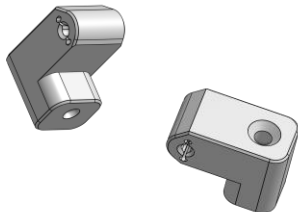
**B53-Tube\_Holder\_Top**



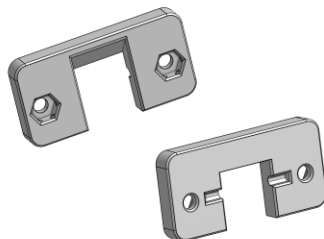
**B60p-M3-M4.5\_Adapter**



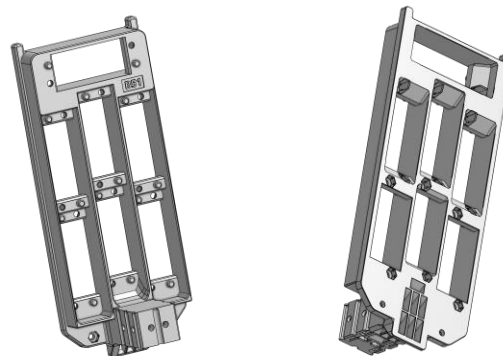
**B48-Hinge**



**B49-Hinge\_Plate**

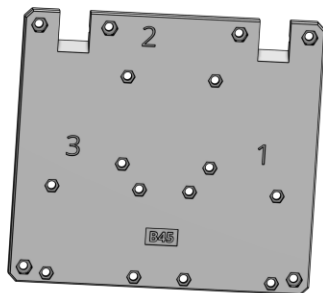


**B51-Servo\_Array\_Scaffold**

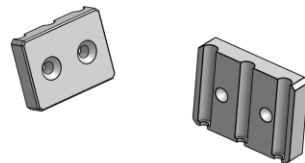


## Printable parts - Overview

**B45-Electronics\_base**



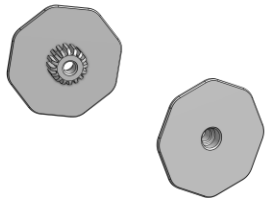
**B52-Tube\_Holder\_Slide**



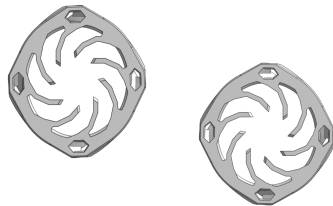
**B27-Wire\_connector\_mount**



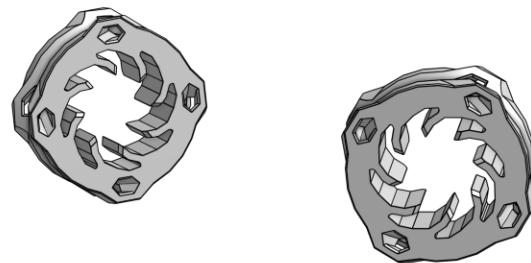
**B25-Wire\_connector**



**B26-Wire\_connector\_pawl**



**B31-Wire\_connector\_pawl\_forearm**





## Build it better: our suggestion for assembling pib



We recommend **tools** for each step. These are a suggestion, you can of course also use other tools.



1-5

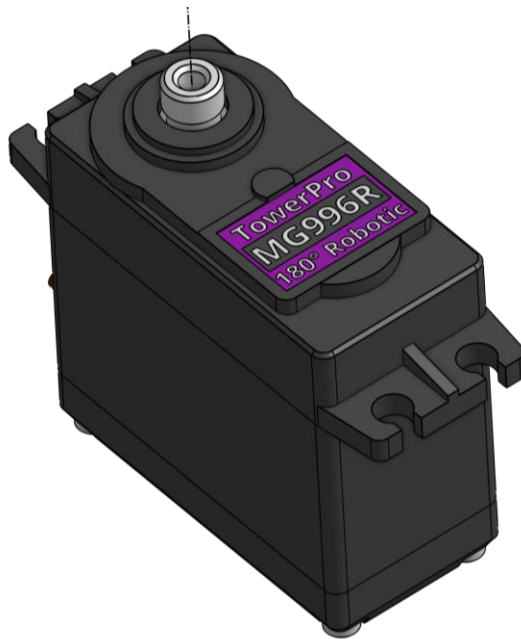
We have categorized each step according to its **difficulty** - from **1-5** (1 being the easiest, 5 the hardest)



We also show you which **non-printable parts** you need for each step

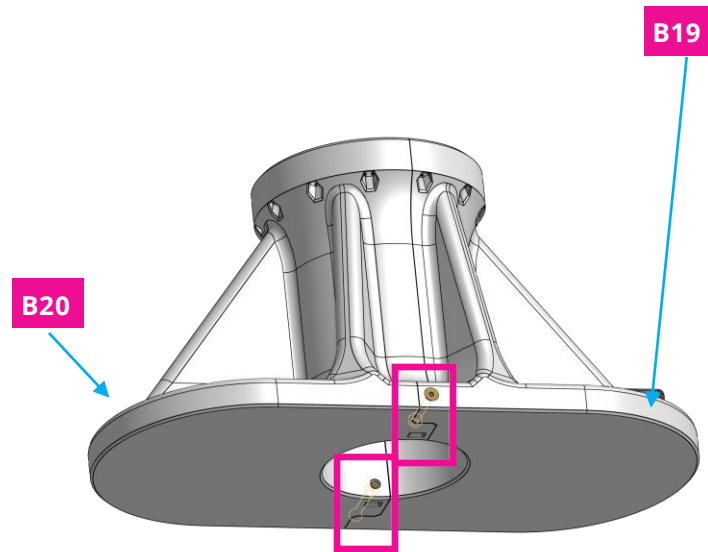
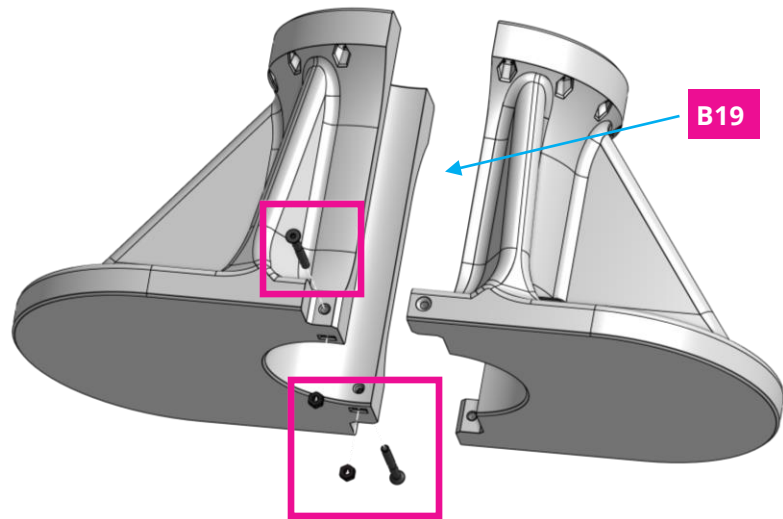
## Step 0

Make sure all motors in this tutorial are calibrated according to tutorial "**step 1c motor calibration**"



## Step 1

Place **2 x nuts** in the shown spots in **B19**, then use **2 x 30 mm screws** to fix **B20** to **B19**.

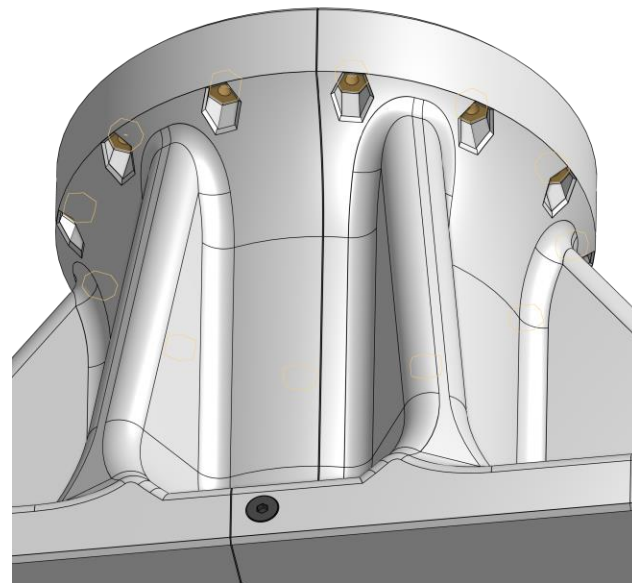
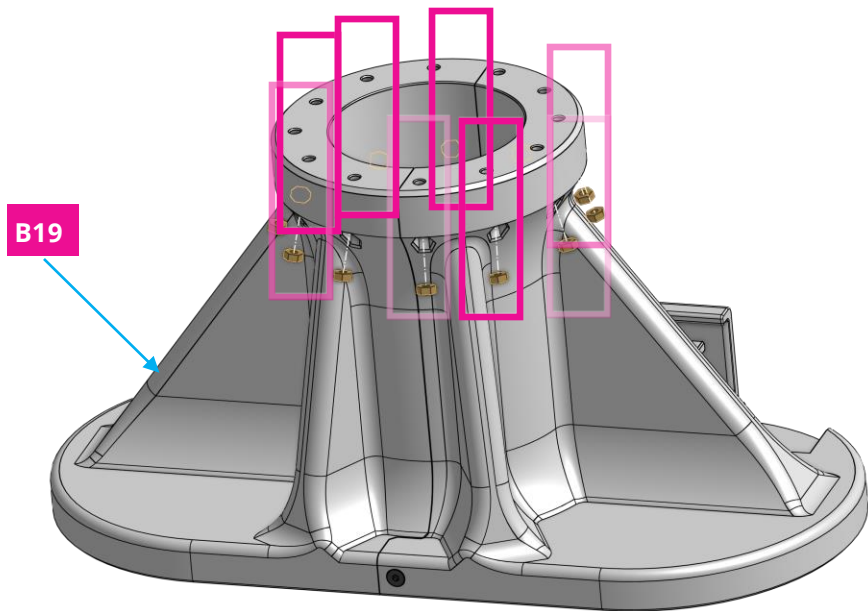


## Step 2a

Place **12 x nuts** in shown spots in **B19** and **B20**.



6x

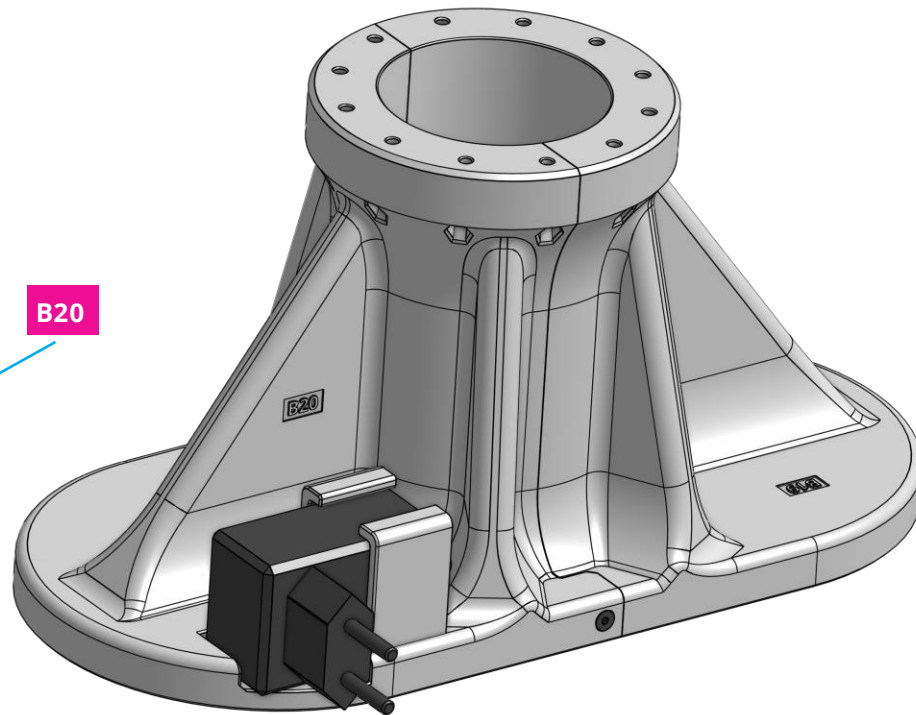
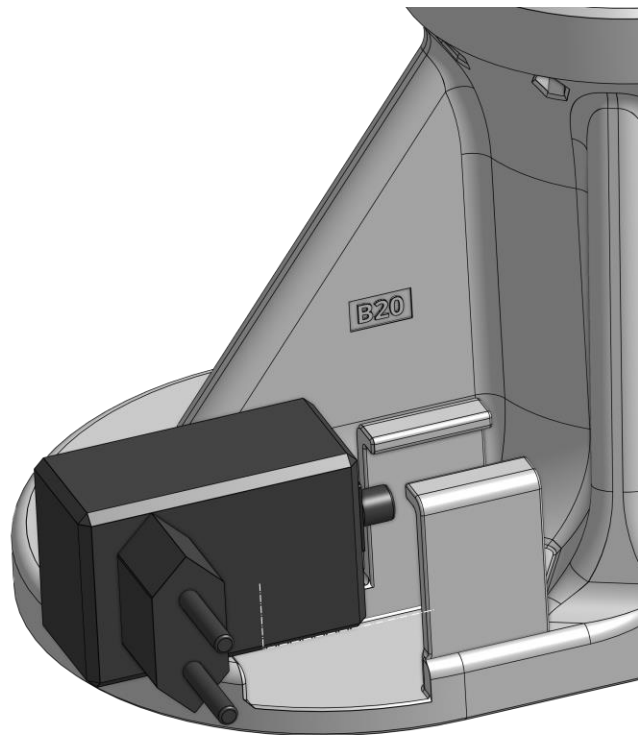


**B20**

*It is easier to put the nuts into place,  
when you flip the assembly.*

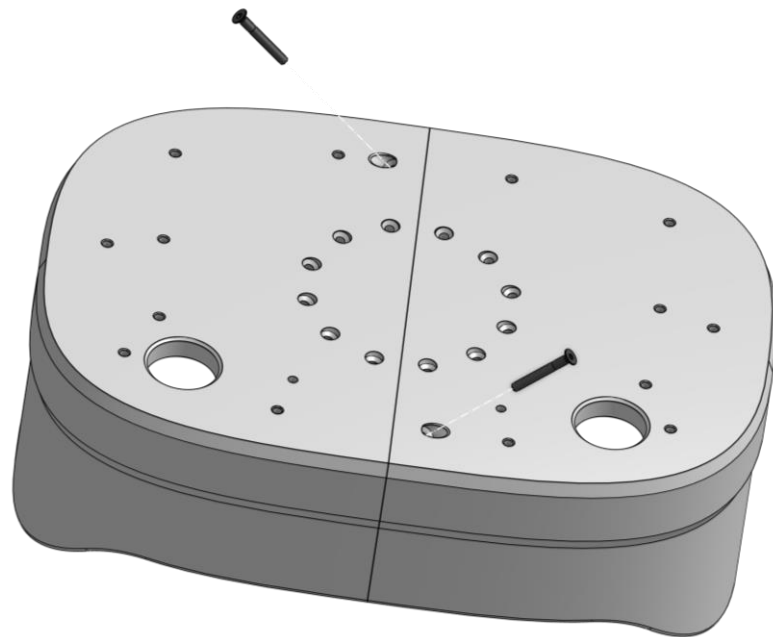
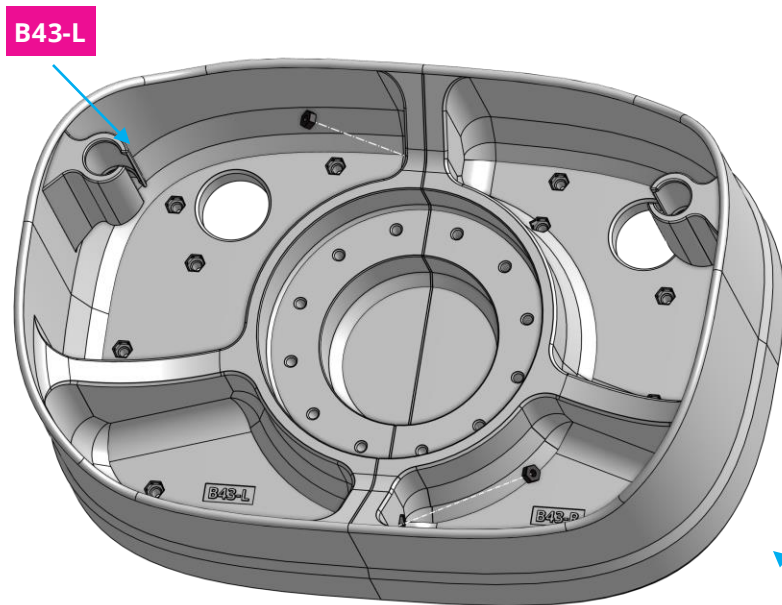
## Step 2b

Place **E16** in **B20**.



## Step 3a

Connect **B43-L** and **B43-R** using **2 x M3 nuts** and **2 x M3 25mm screws**.



B43-R

### Step 3b

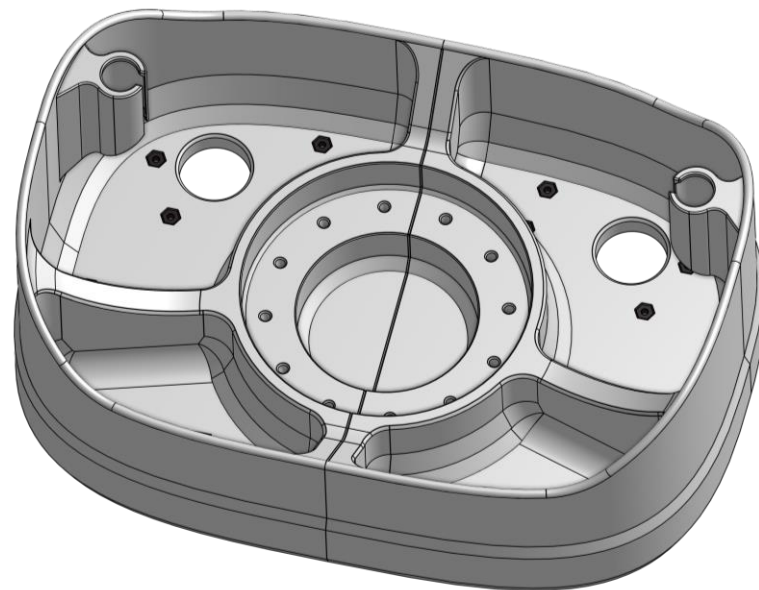
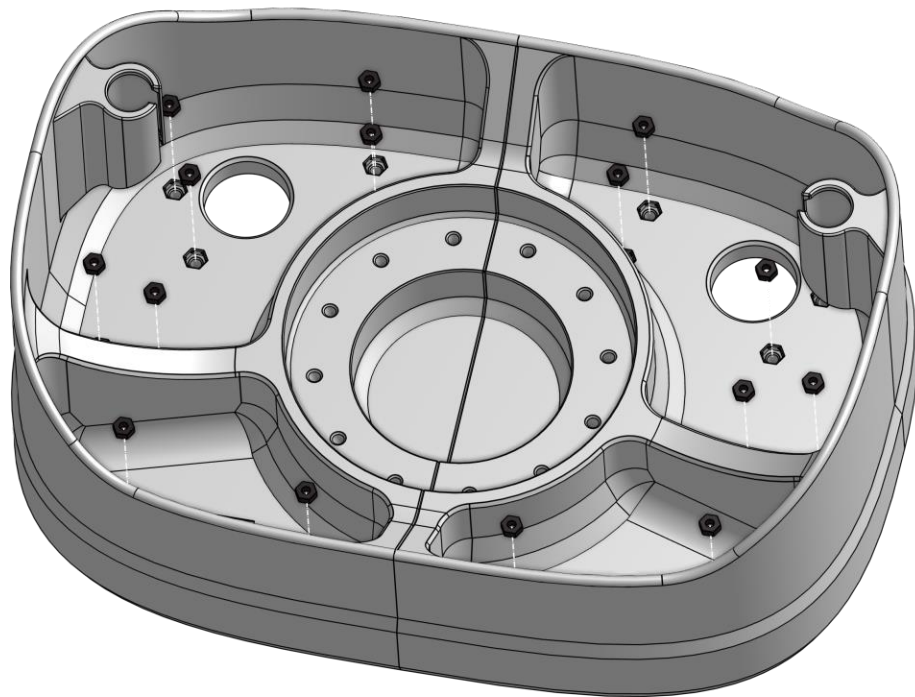
Place **16 x M3** nuts in the assembly.



2



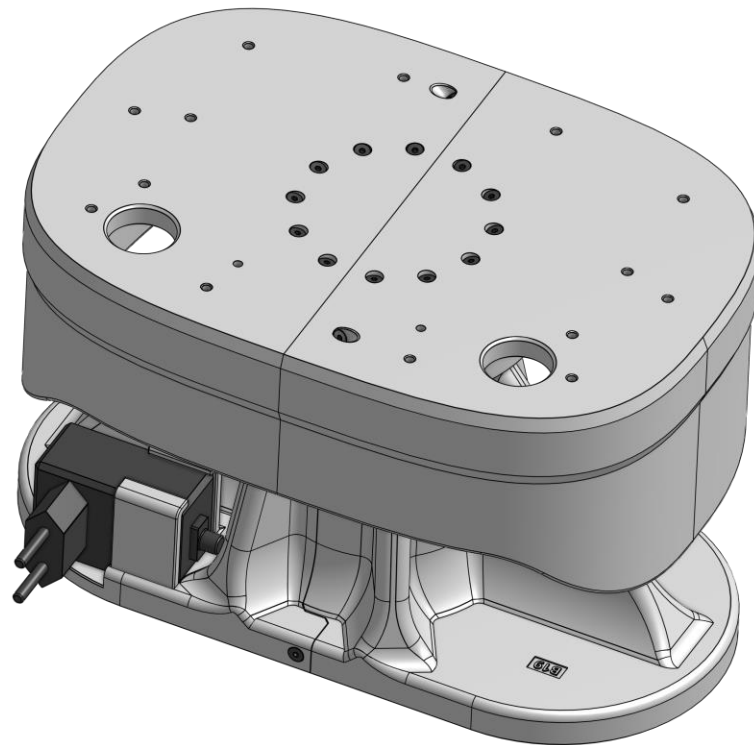
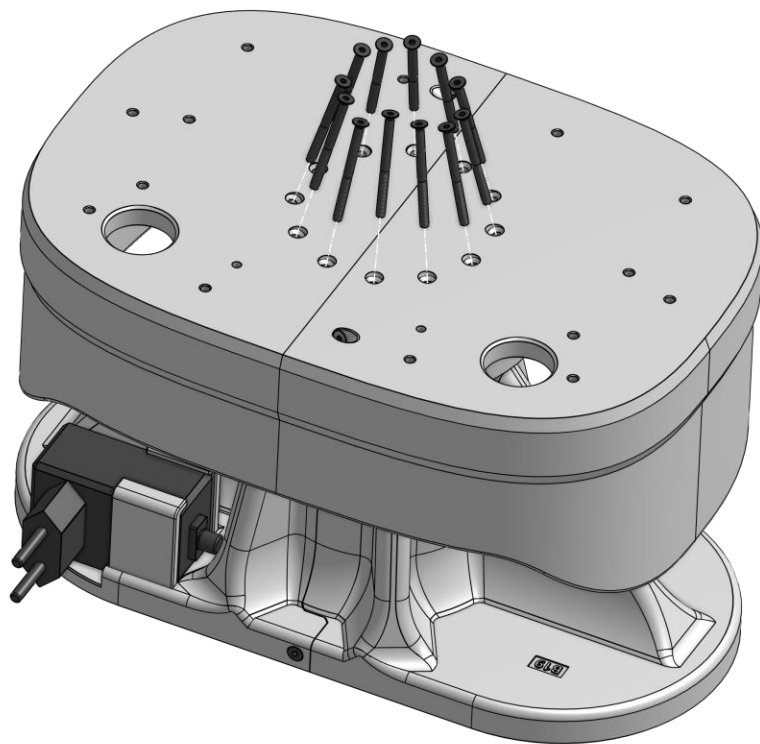
16x



## Step 4

Connect both assemblies using **12 x 40 mm screws**.

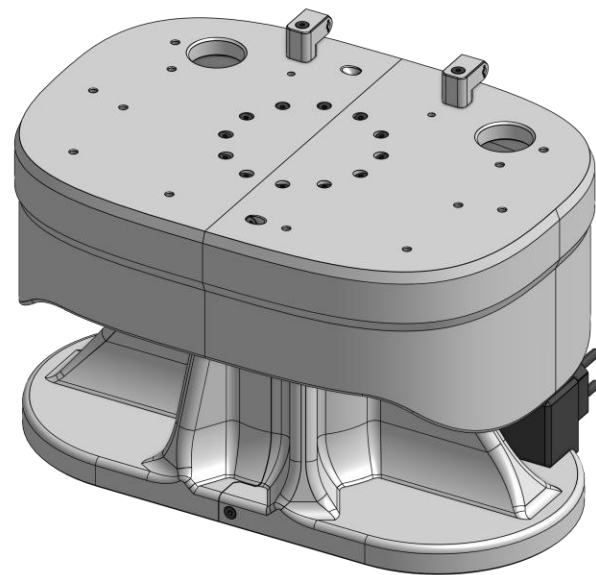
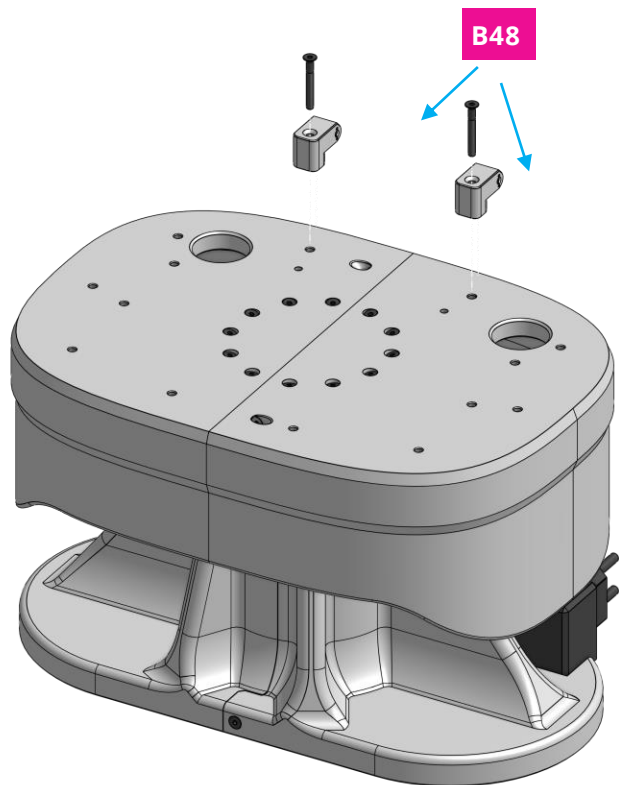
You may apply some gentle force to connect the assemblies.





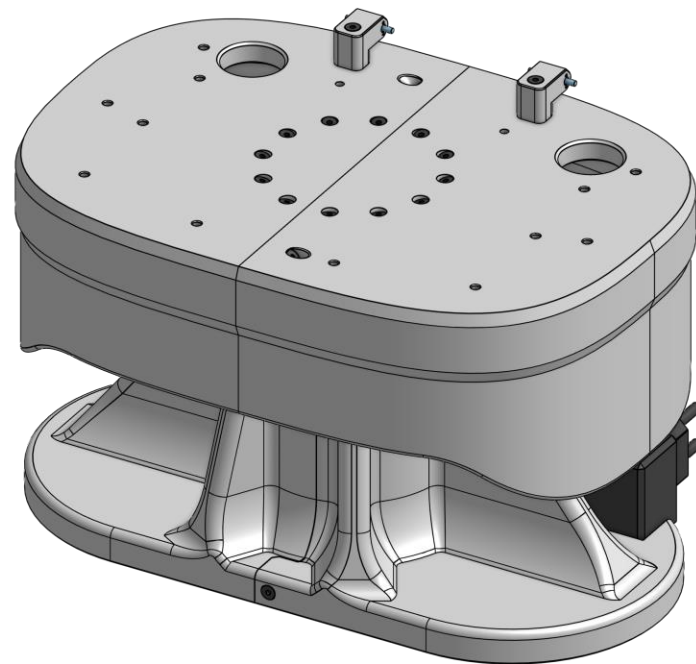
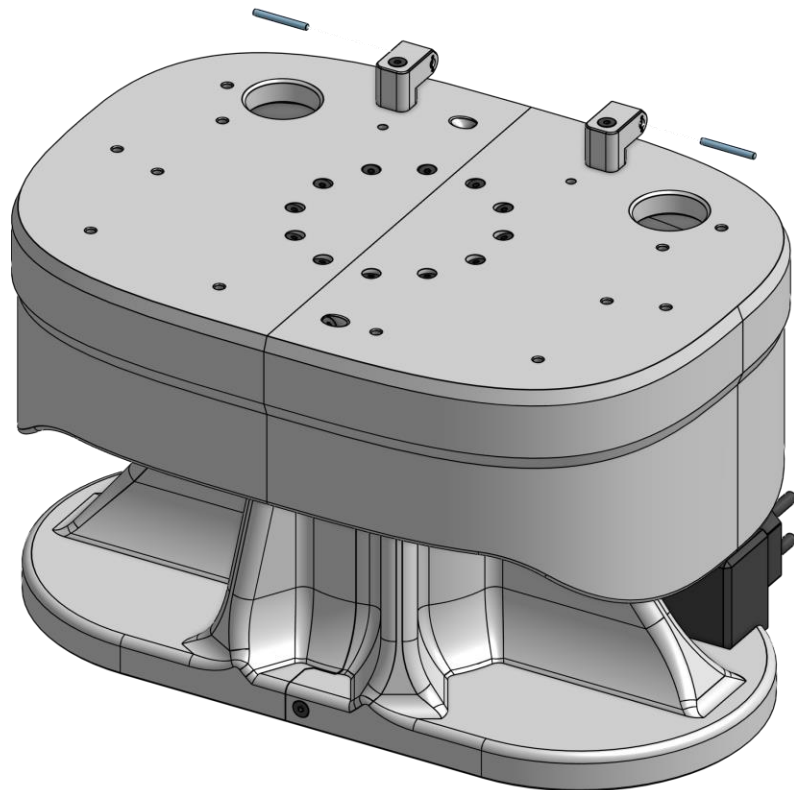
## Step 5

Connect 2 x **B48** to **assembly** using 2 x 25 mm screws.



## Step 6a

Insert 2 x **M08** to both **B48**.

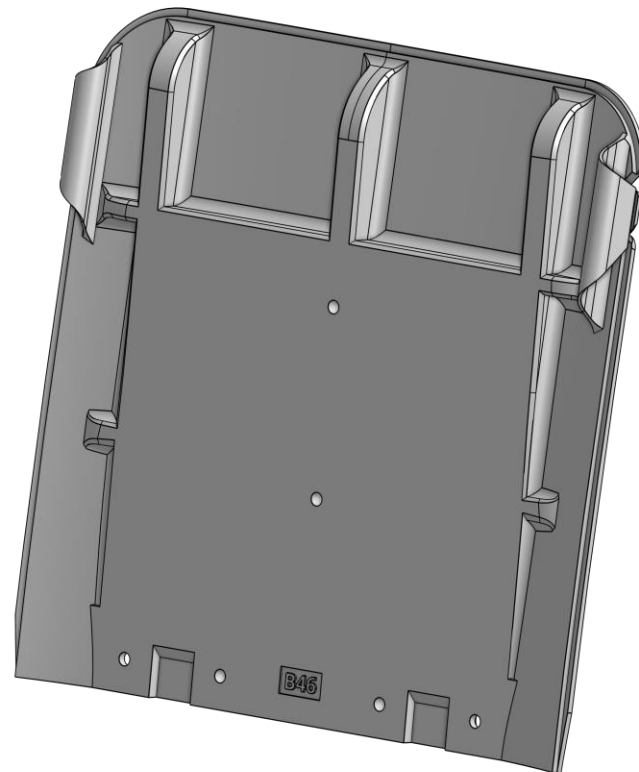
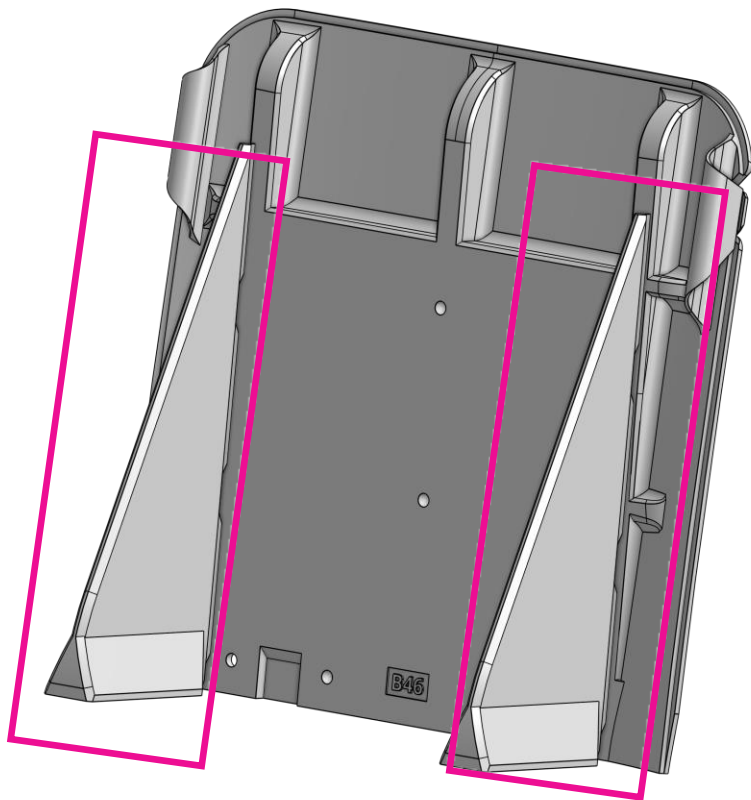


## Step 6b

Remove the print helpers from **B46** gently with your hands or a plier



1



## Step 7

Connect **B46** to the previous assembly using **2 x B49**, **4 x M3 nuts** and **4 x M3 10mm screws**.



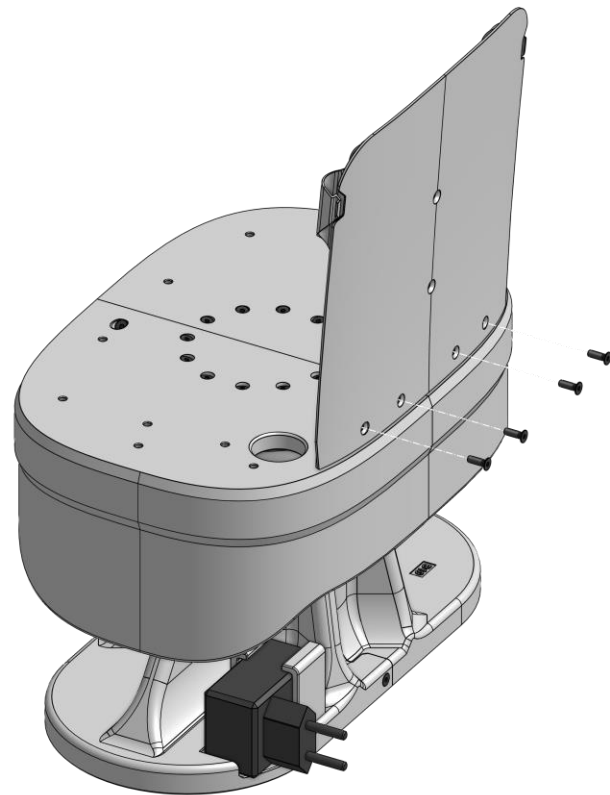
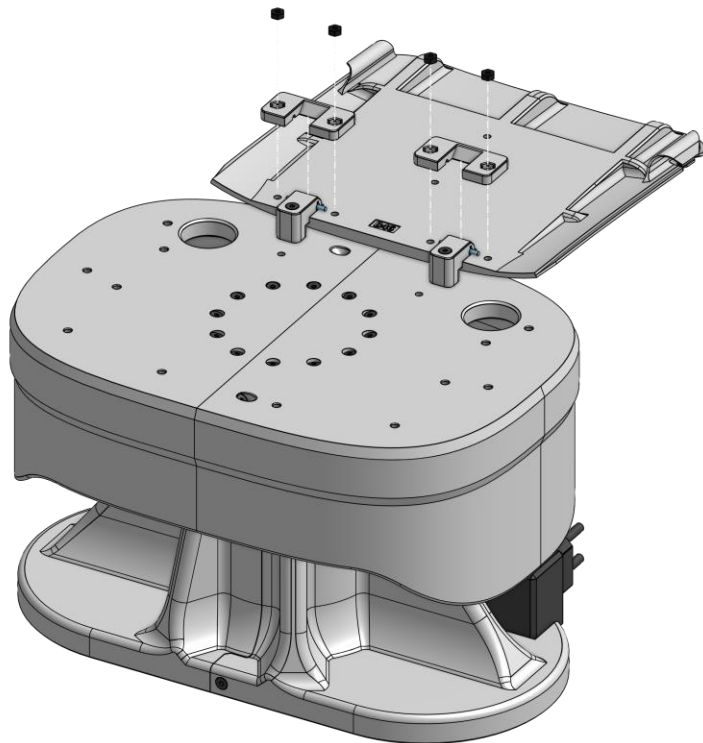
2



4x



4x

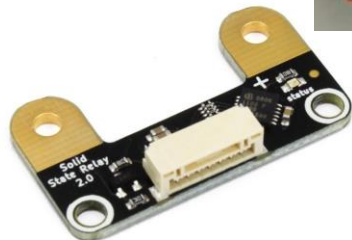


## Step 8a

Connect **solid state relay bricklet** and **solid state relay** using 2 screws from the relay. This assembly will be called **E16** from now on.



solid state relay



solid state relay  
bricklet



## Step 8b

Connect **B47** to **B43-L** and **B43-R** using **4 x M3 nuts** and **2 x M3 16mm screws**.



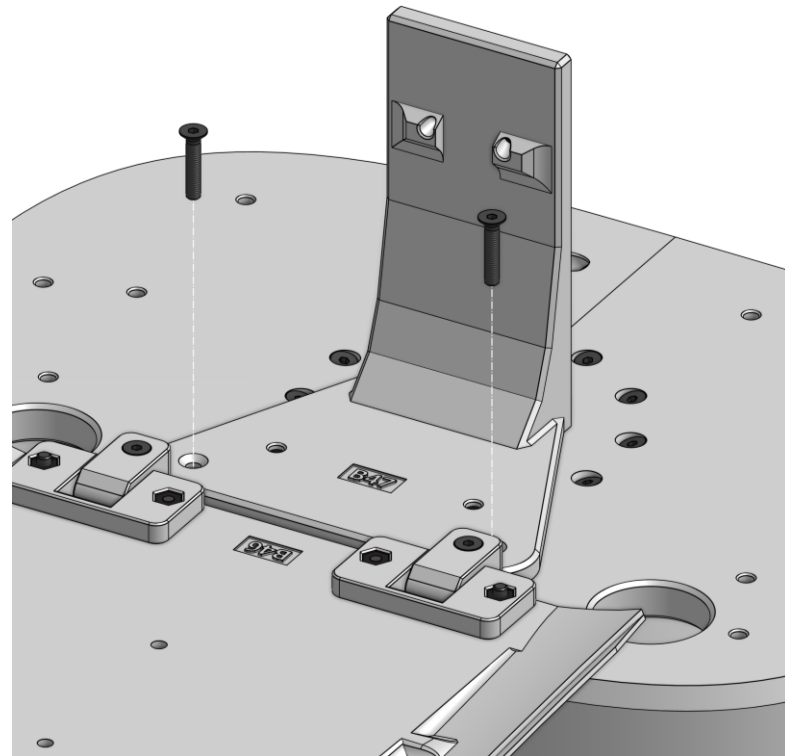
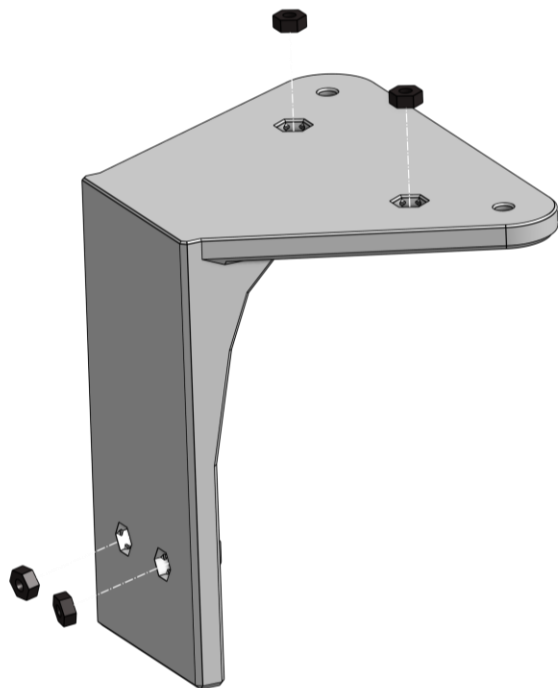
2



4x

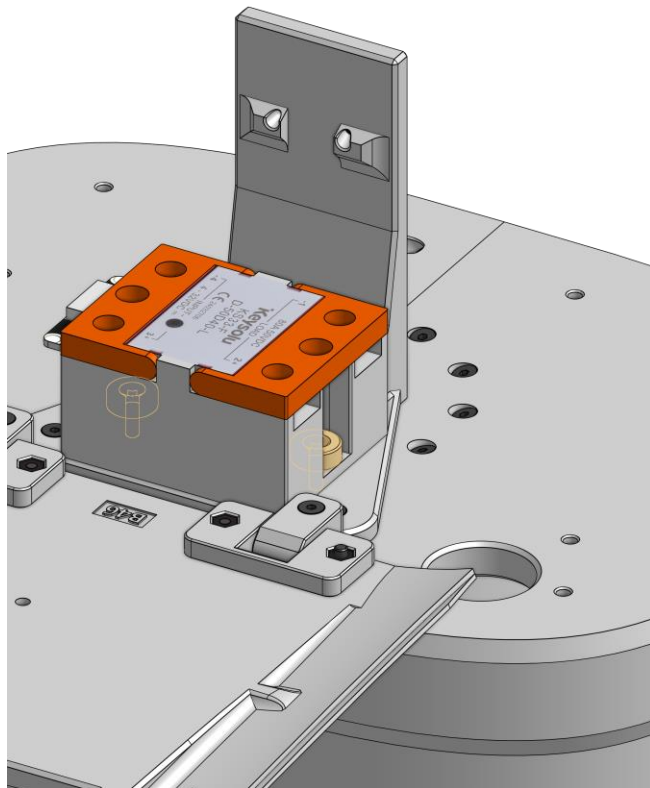
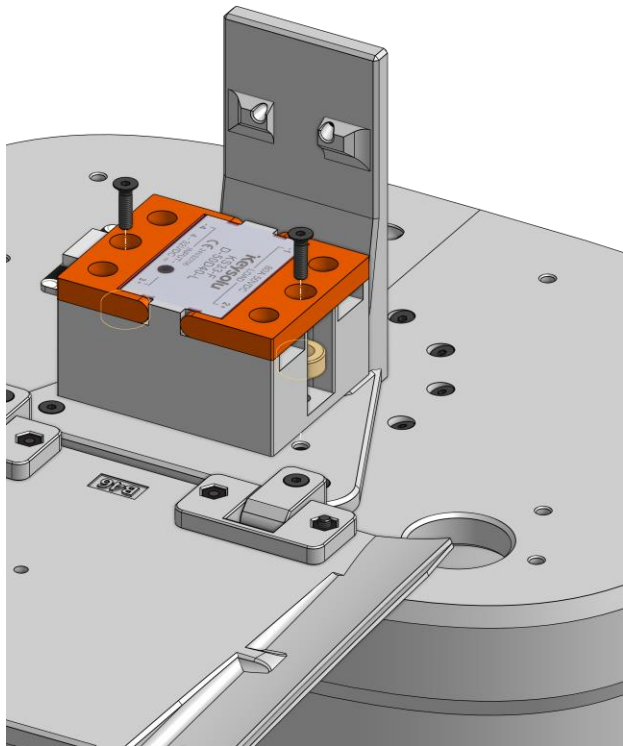


2x



## Step 8c

Connect **E16** to **B43-L** and **B43-R** using **2 x B57** and **2 x M3 12mm screws**.



2



2x

## Step 8d

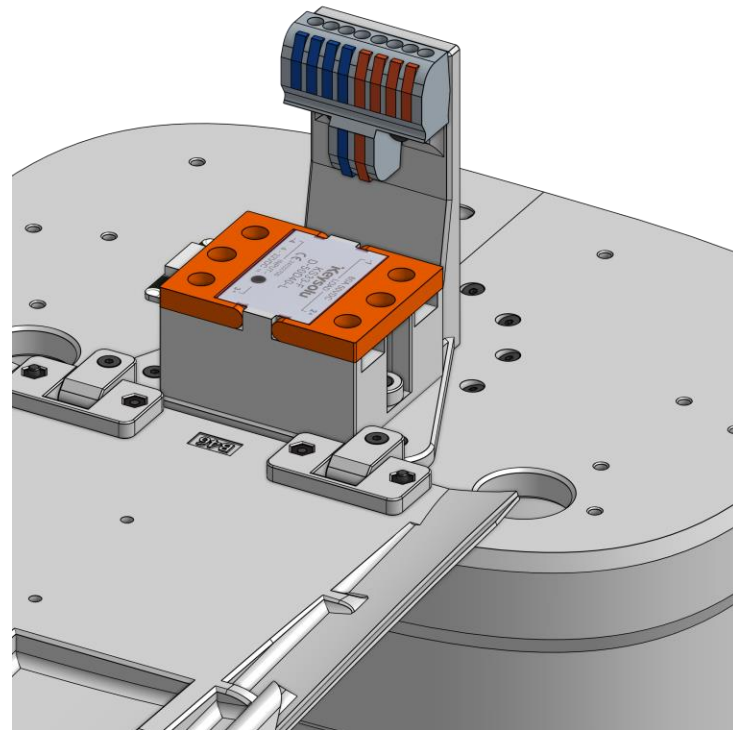
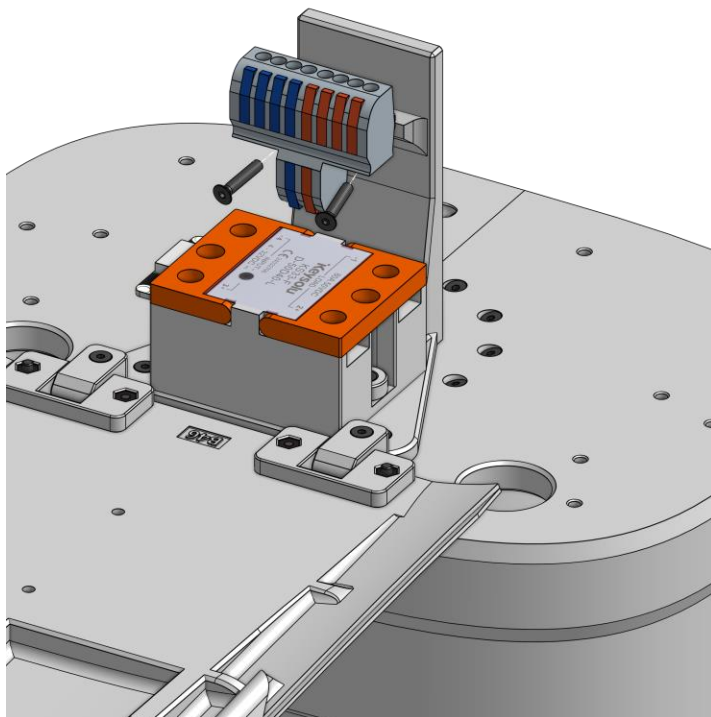
Connect **E13** to **B47** using **2 x M3 16mm** screws.



2



2x



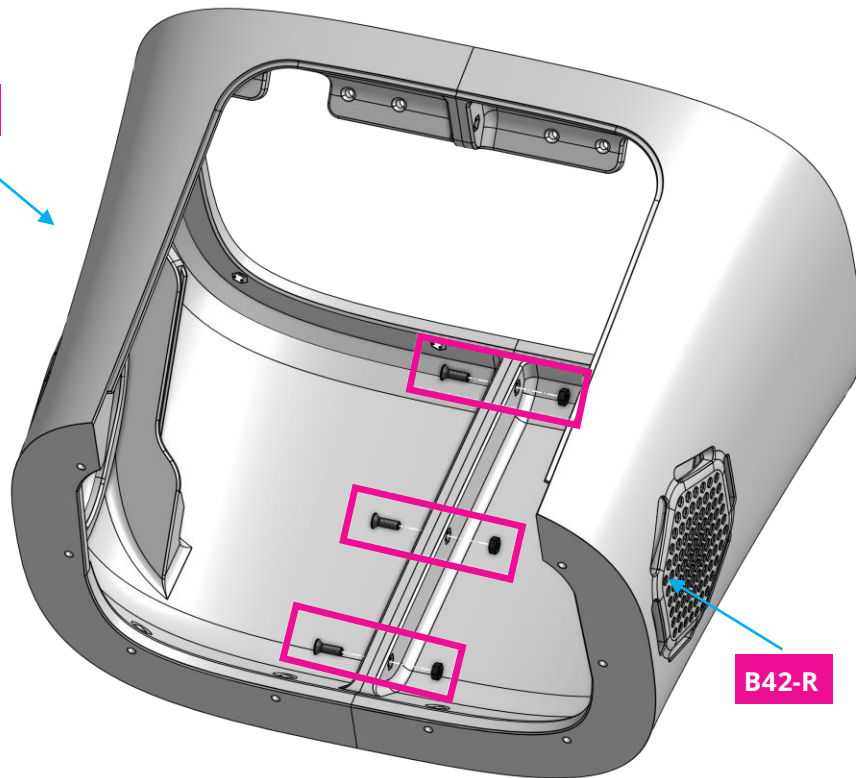


## Step 9a

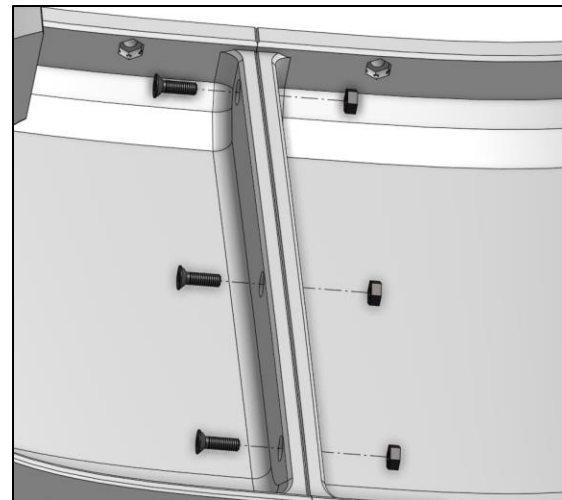
Connect **B42-L** and **B42-R** using **3 x M3 nuts** and **3 x M3 10mm screws**.



B42-L

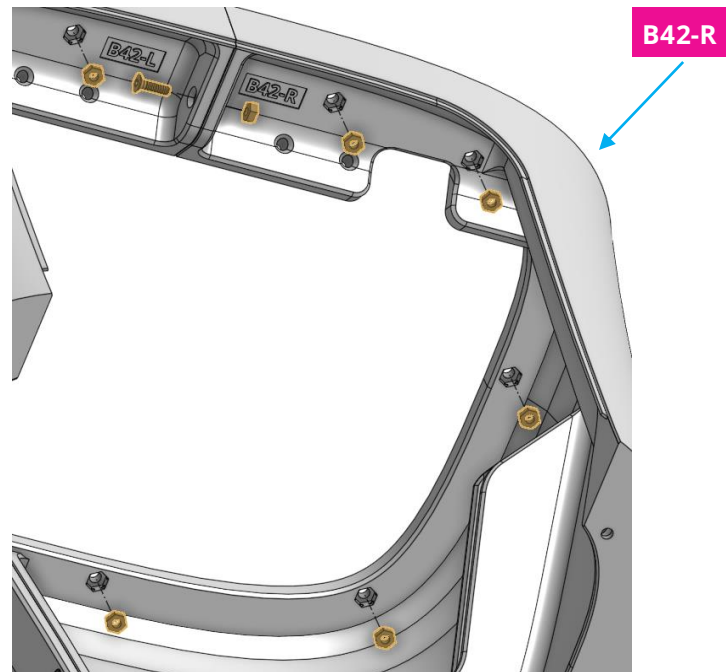
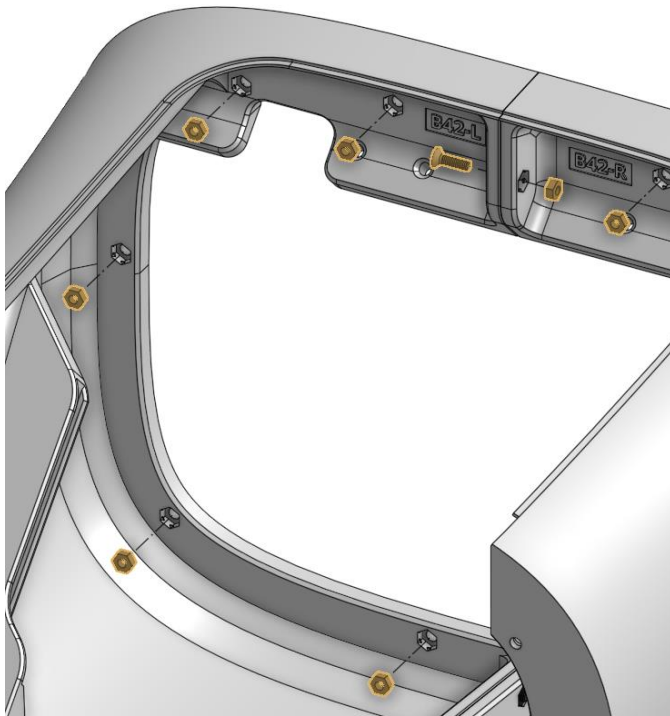


B42-R



## Step 9b

Place **10 x M3 nuts** in **B42** and improve connection between **L** and **R** using **1 x M3 nut** and **1 x M3 10mm screw**.



## Step 9c

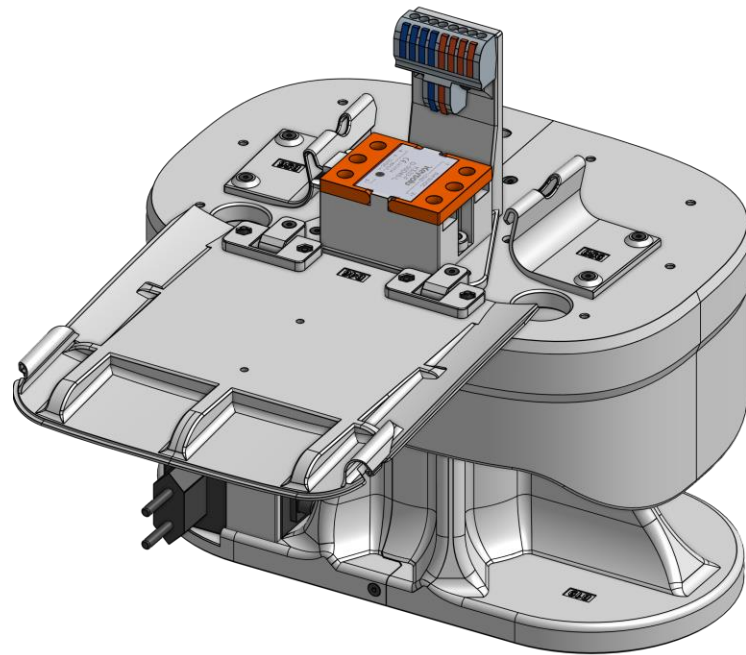
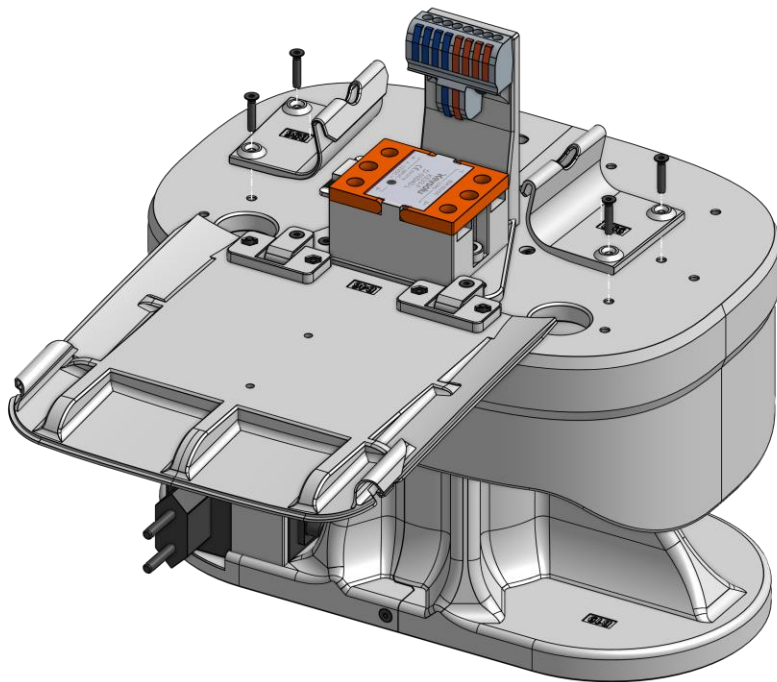
Connect **2 x B56** to assembly with **4 x M3 16mm** screws



2



4x

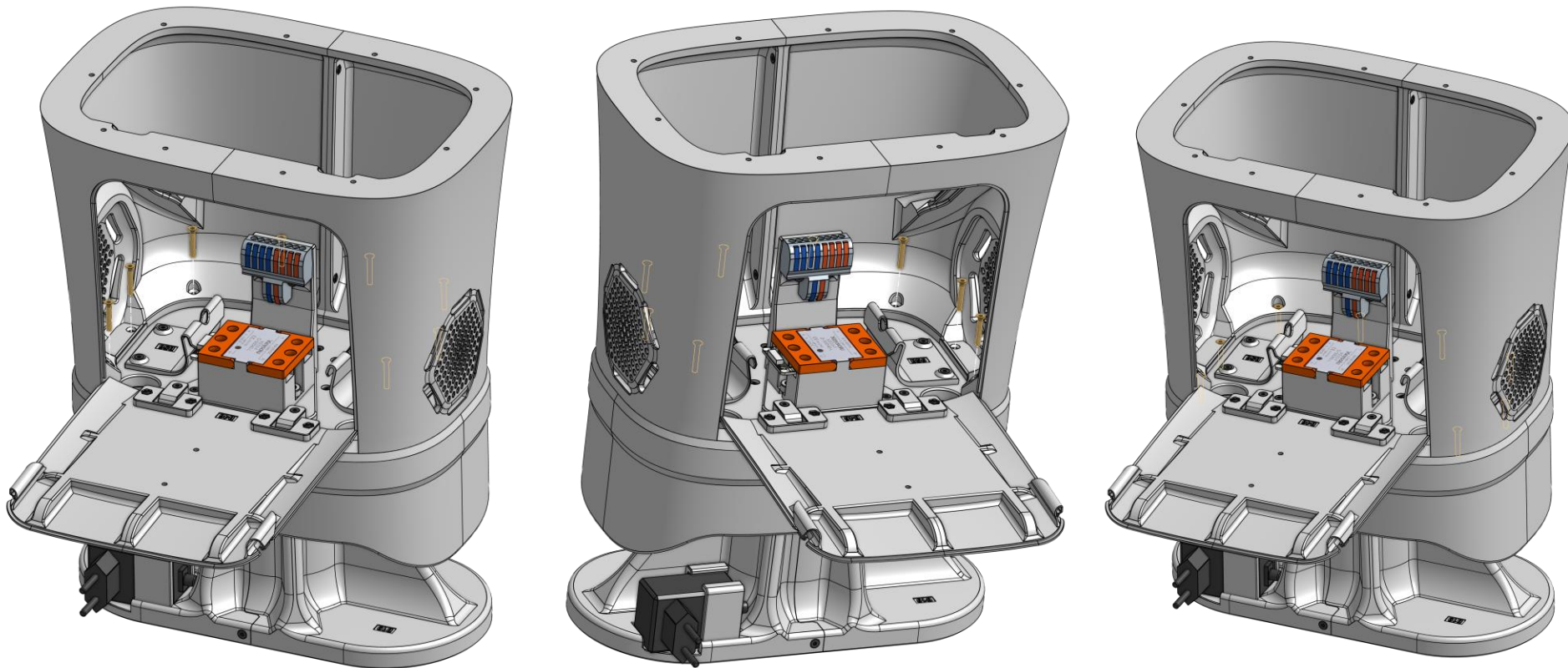


## Step 9d

Connect ribcage (previous assembly) to assembly with **8 x M3 20mm screws**.

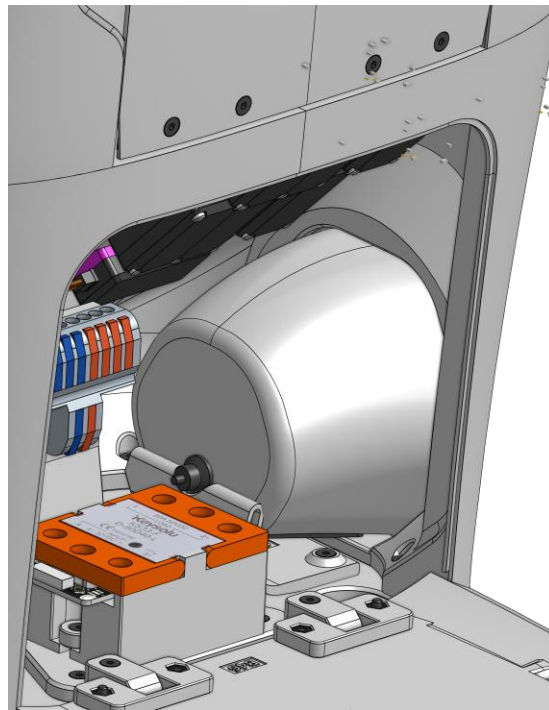
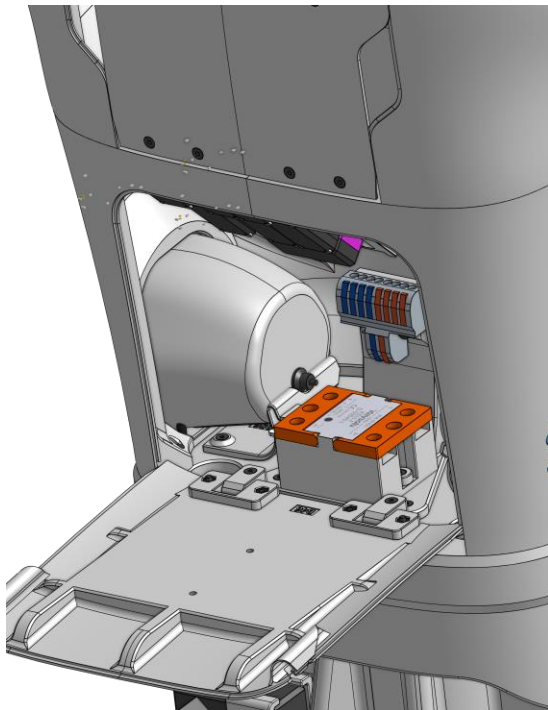
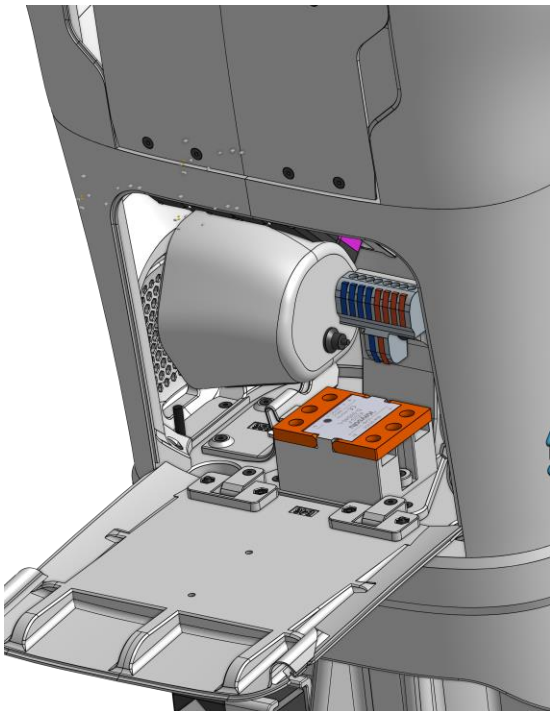


8x



## Step 9e

Connect **2 x E26-Speakers** to **B42-L** and **B42-R**





## Step 10a

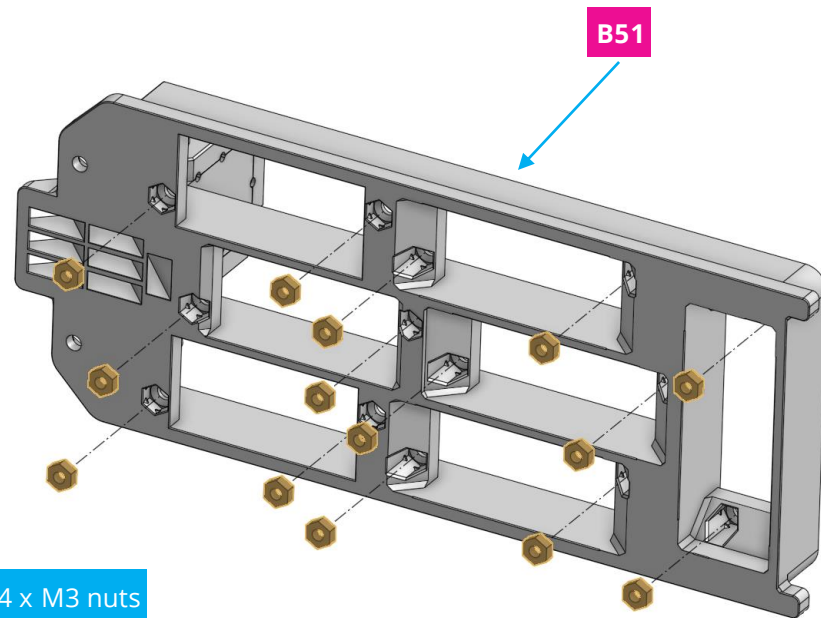
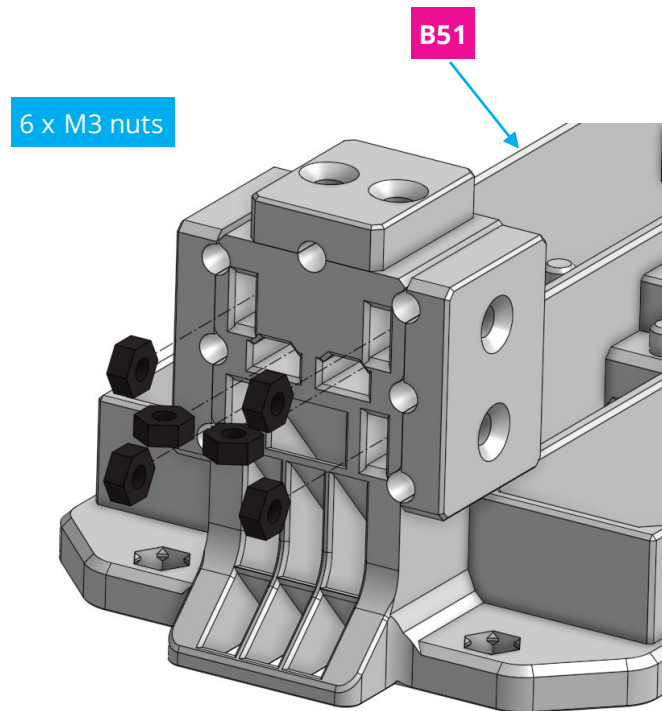
Place **20 x M3 nuts** in **B51**.



2

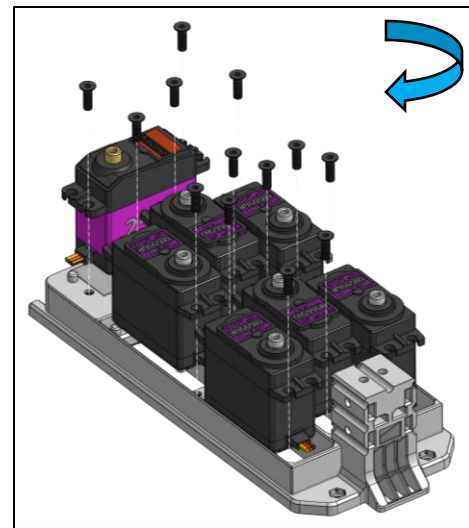
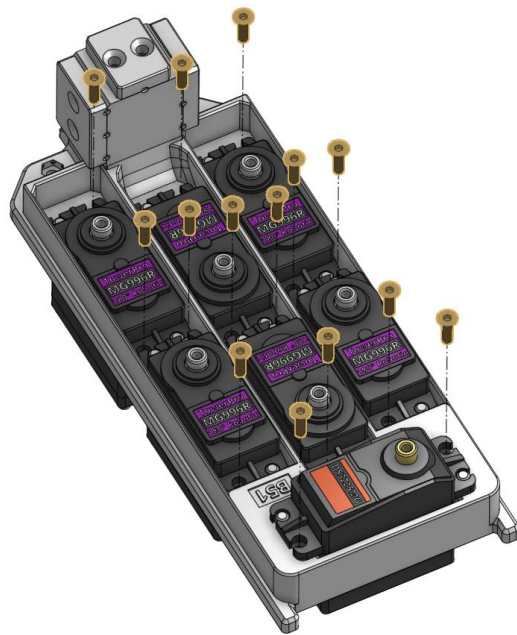
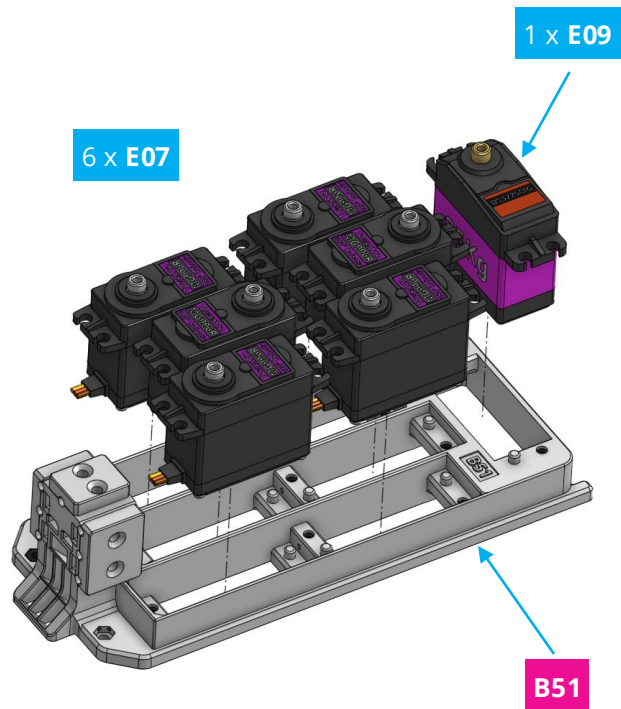


20x



## Step 10b

Assemble 6 x **E07** motors and 1 x **E09** in using 14 x **M3 10mm** screws.



Please revert to step 0 and calibrate the motor if it was not calibrated

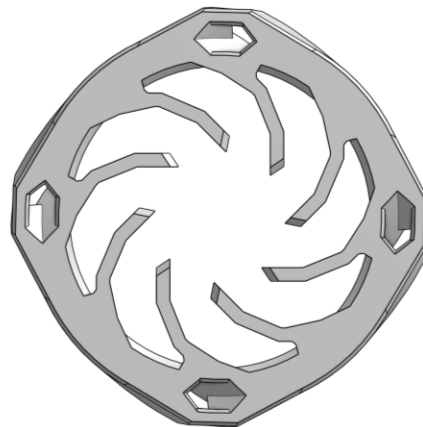
## Note

Turn **B26** around to switch orientation between clockwise (CW) and counterclockwise (CCW).

Clockwise (CW)



Counter clockwise (CCW)

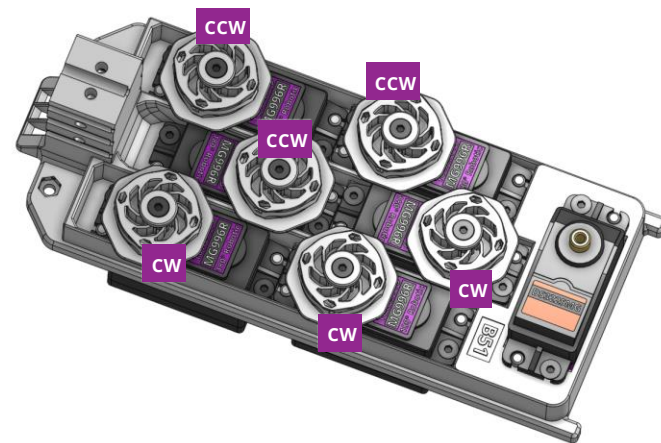
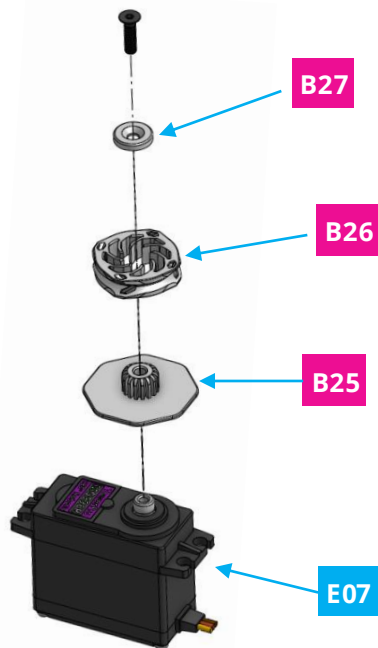
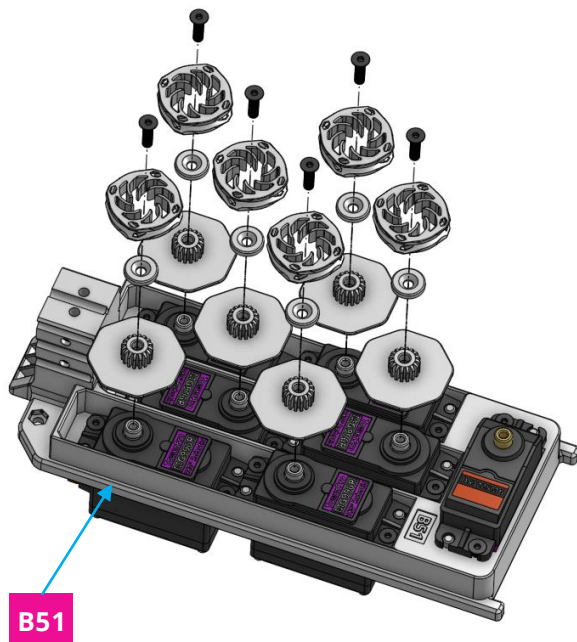




## Step 10c



Assemble wire connectors using the shown arrangement by using **6 x B25**, **B26**, **B27** and **6x M3 12mm screws**. Make sure **B26** orientation matches the shown one the right picture.



## Step 10d

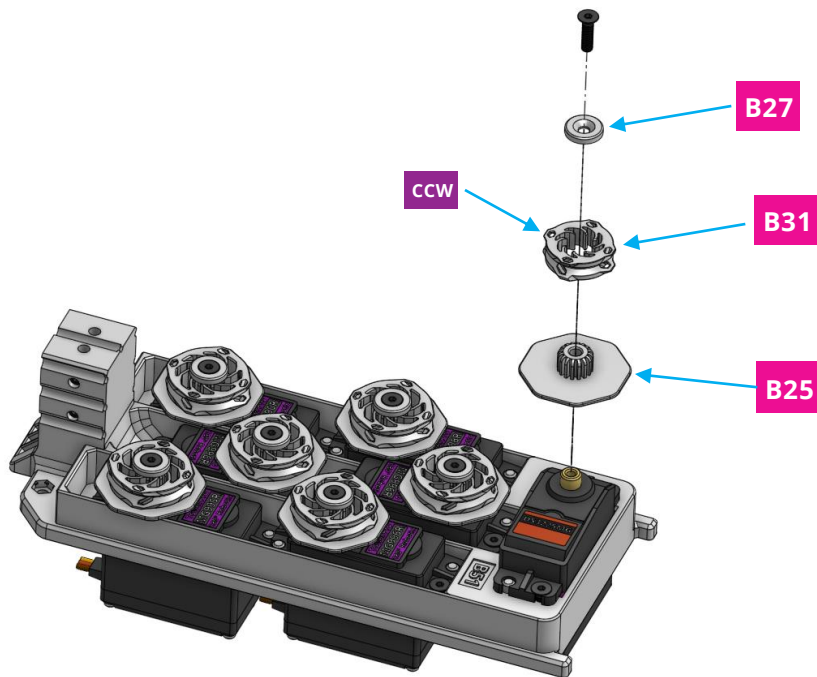
Assemble wire connectors using the shown arrangement by using **B25**, **B31**, **B27** and **1x M3 12mm screw**. Make sure **B31** is switched to counterclockwise orientation.



2



1x



## Step 10e



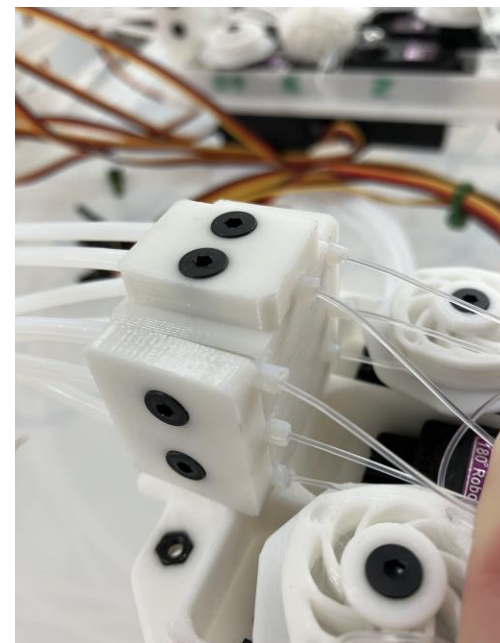
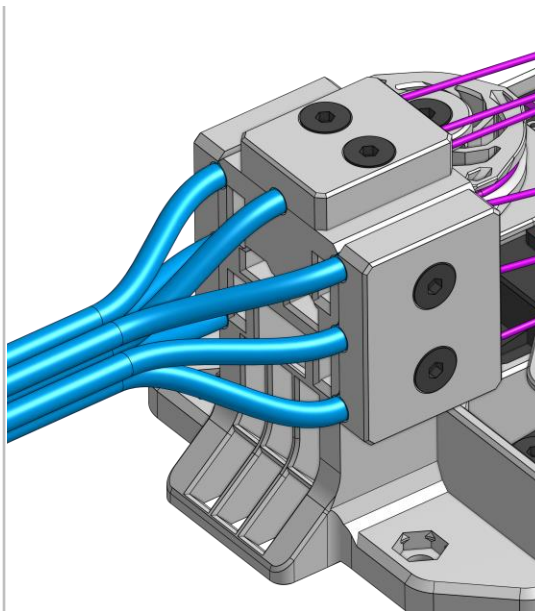
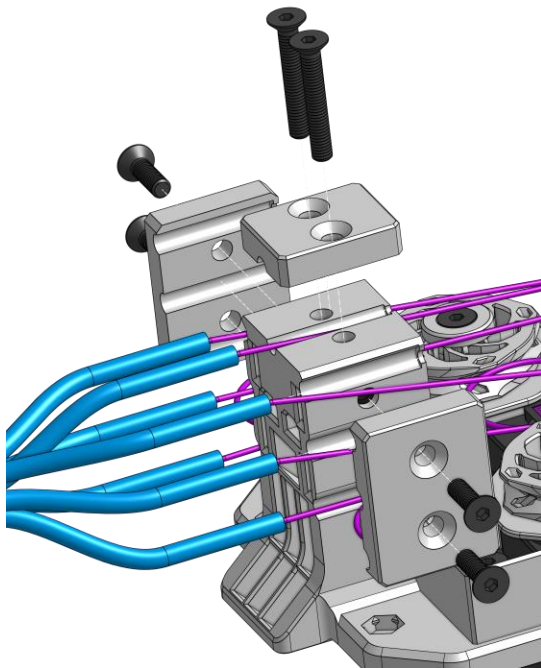
2



6x

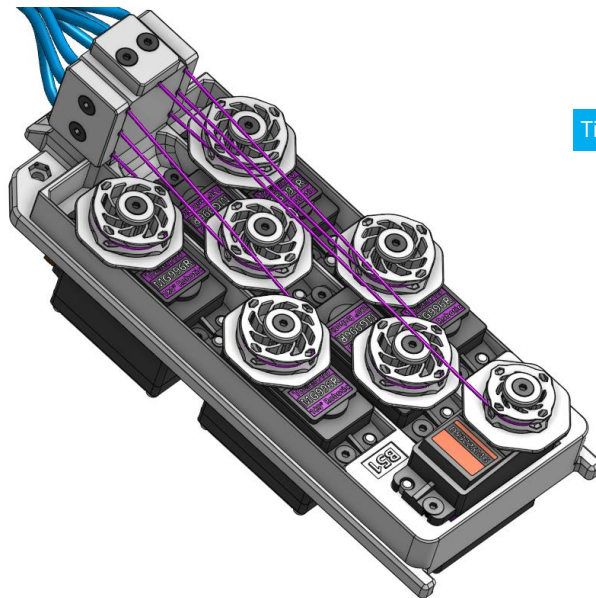
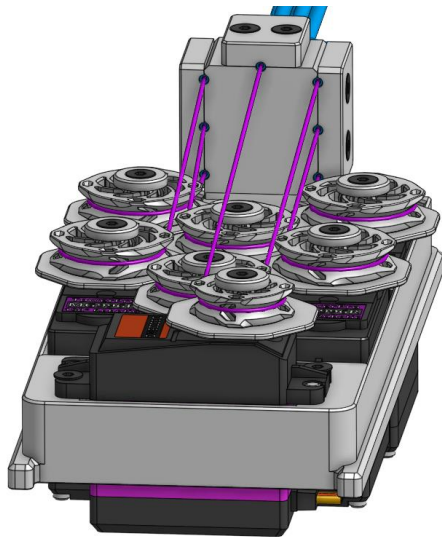
Insert the **teflon tubes** from forearm through the shown spots and use **2 x B52, 1 x B53** and **2 x 20 mm** screws **and 4 x 10 mm** to fix them.

(Tipp: Wrap 2 x pieces of tape around each end of the tube before fixing them to have better grip.)

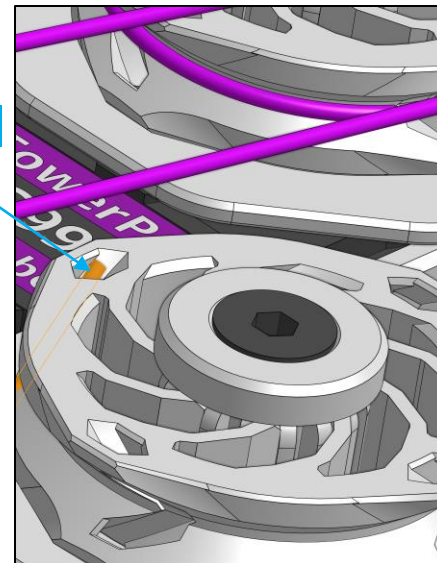


## Step 10f

Insert **fluorocarbon wires** coming out of the **teflon tubes** in shown holes of the **B26** and **B31** connectors and tigh a knot at the end to fix them. Wires and tubes will be hidden in following slides.

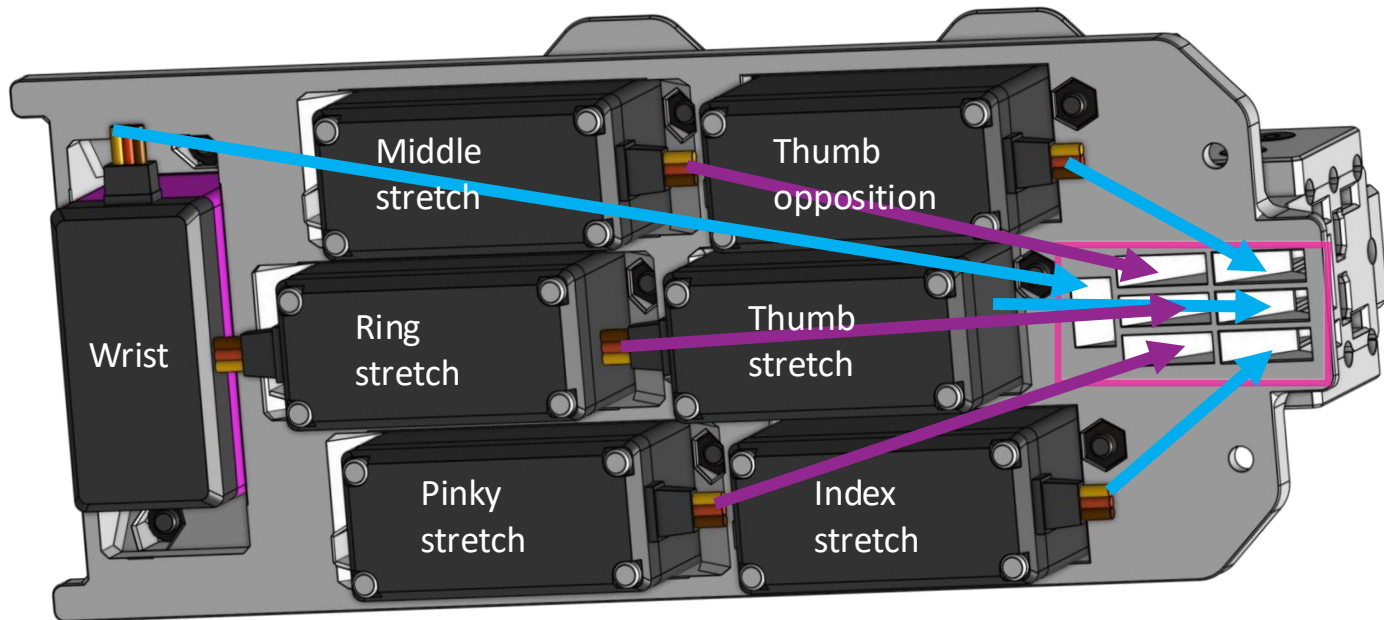


Tie a knot here



## Note

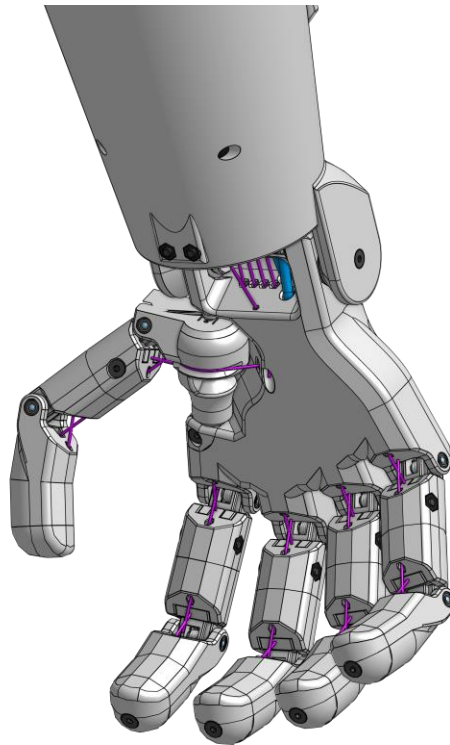
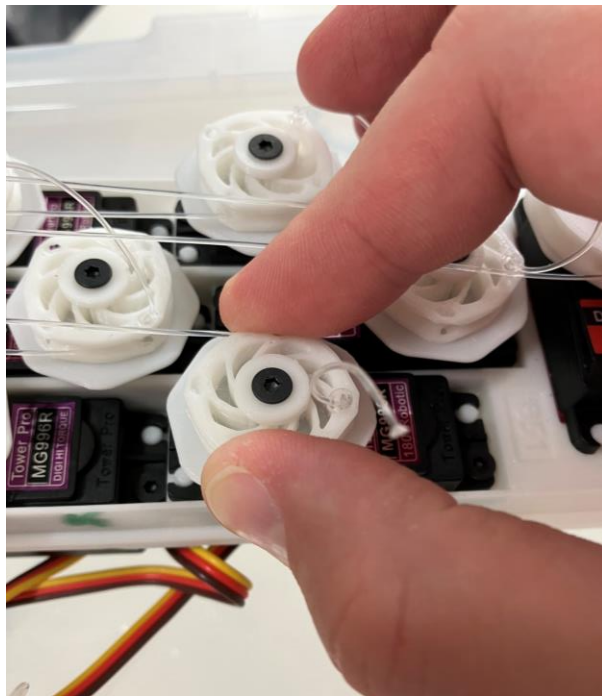
Guide servo wires through the shown holes with an arrangement that makes it easy to connect servos to electronics later, illustrated is a recommended arrangement





## Note

After inserting the wire tigh a knot like shown in the picture, and rotate the spindle until the wires are tight while fingers are at around 45 degrees



## Note

If you overtighten the spindle and need to reset, unscrew it, rotate it and screw it again



## Step 11

Slide servo array into ribcage and fix it using **1 x M3 nut** and **1 x M3 16mm screw**.



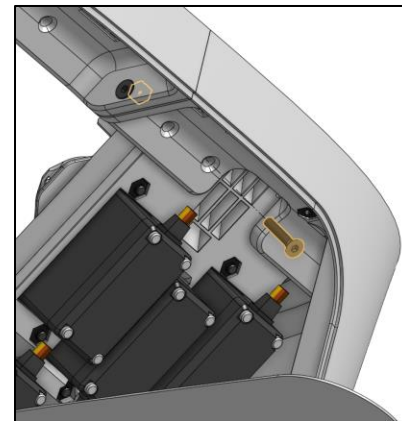
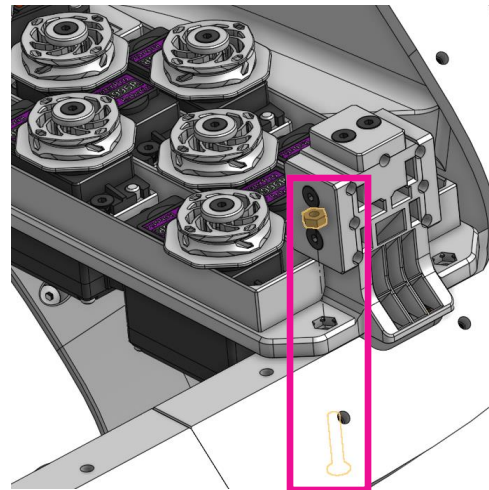
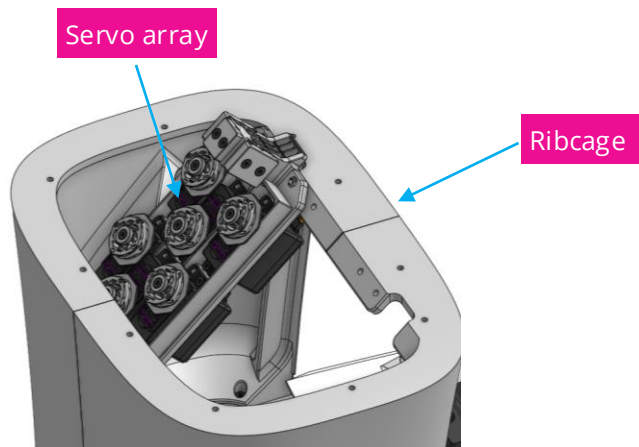
2



1x



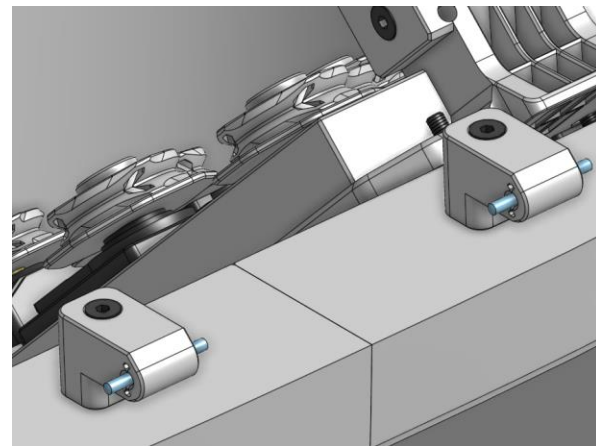
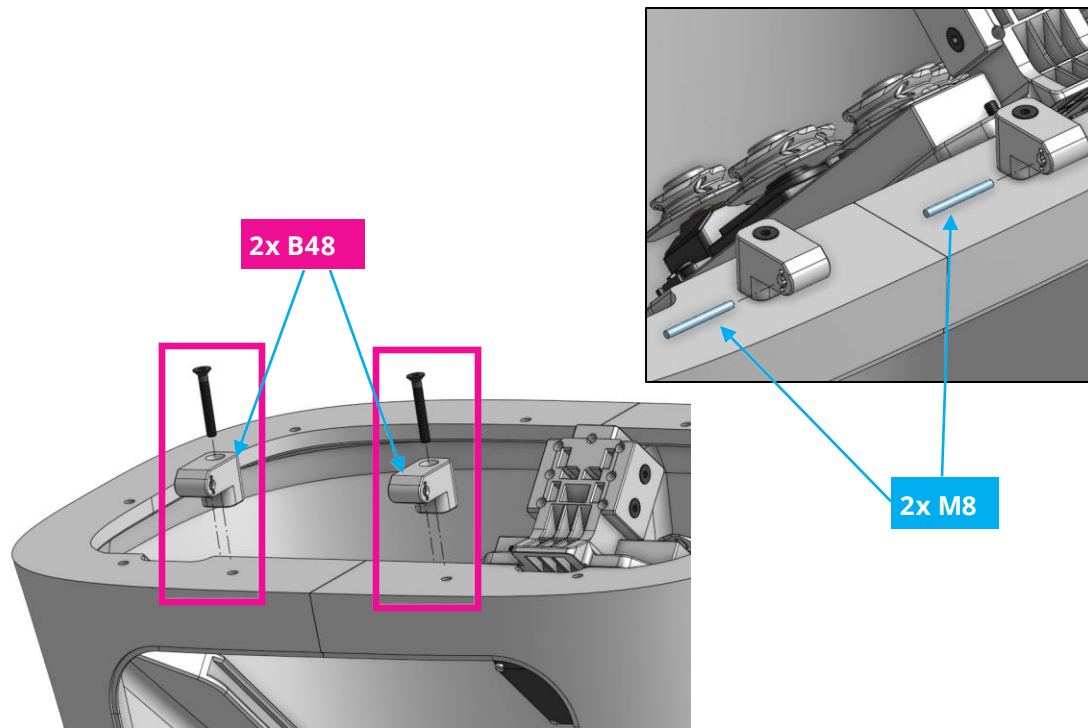
1x





## Step 12a

Assemble **2 x B48** to assembly using **2 x M3 22mm screws** and insert **2 x M08**.



## Step 12b

2



8x

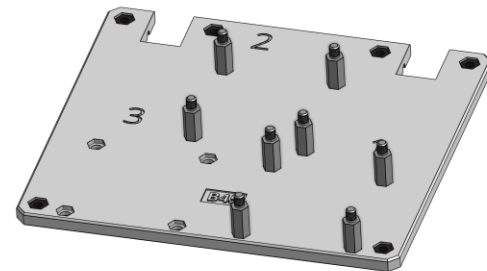
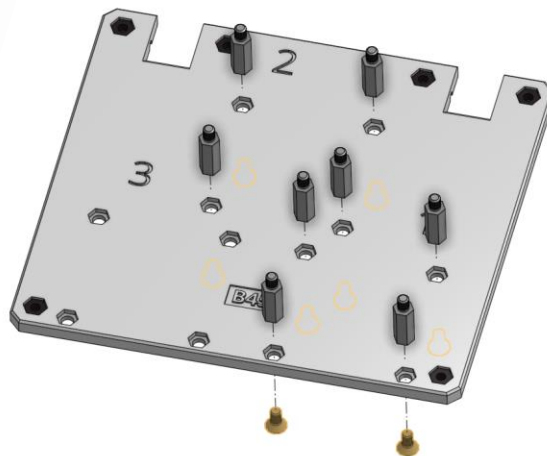
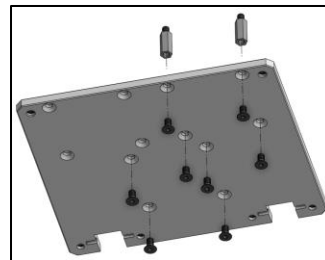
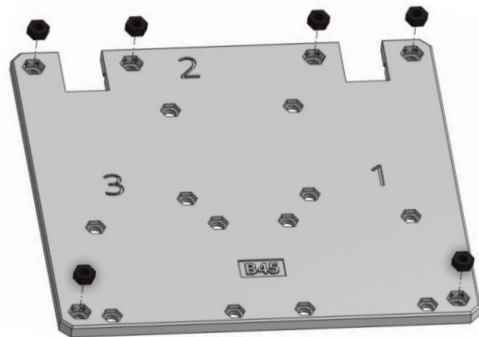


6x



8x

Insert **6 x M3 nuts** and **8 x M13 distancers** in **B45**. Fix the distancers using **8 x M3 6mm screws**.



## Step 12c

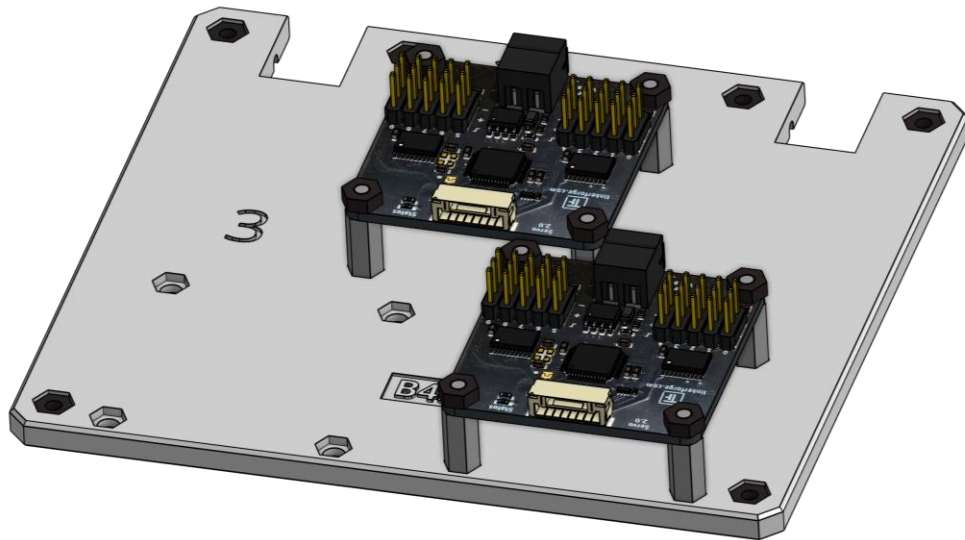
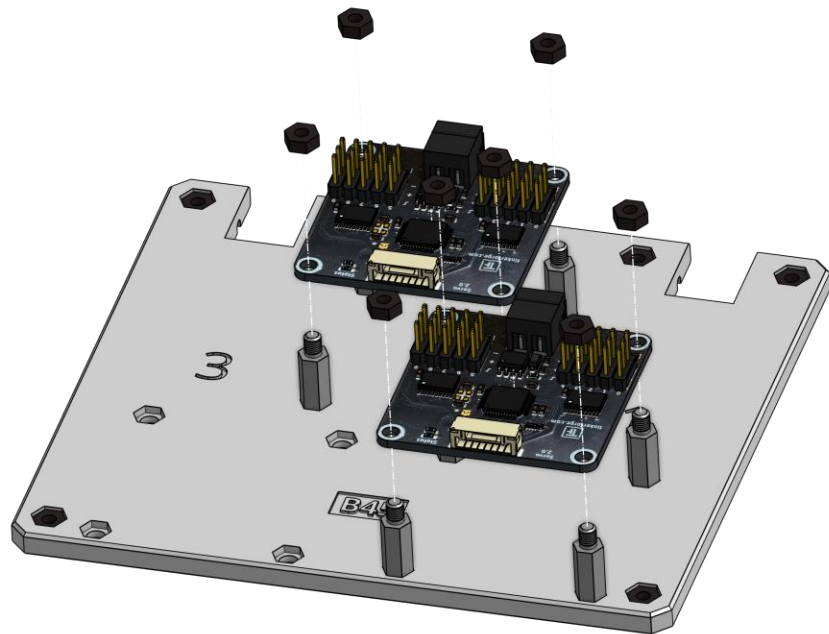
Connect **2 x E03** to the assembly and fix them using **8 x M3 nuts**.



2



8x

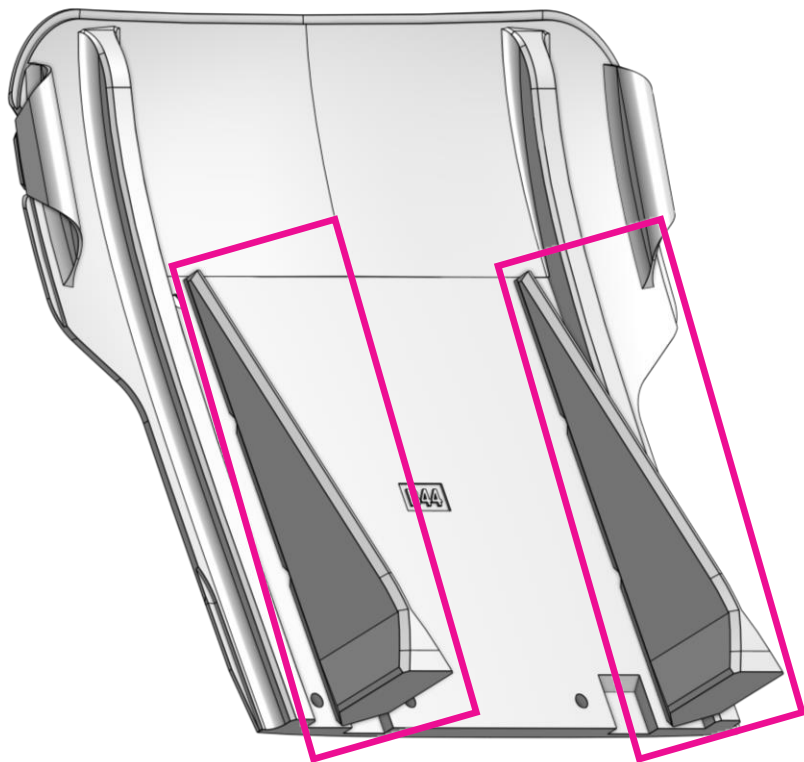


## Step 12d

Remove support structure gently from **B44** with hands or plier



2



## Step 12e

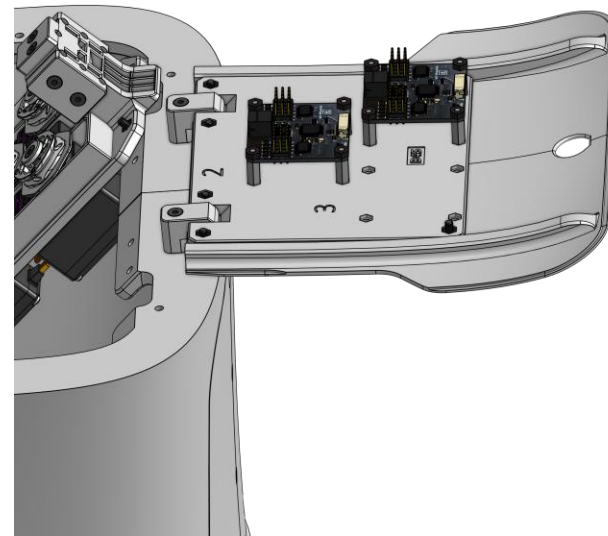
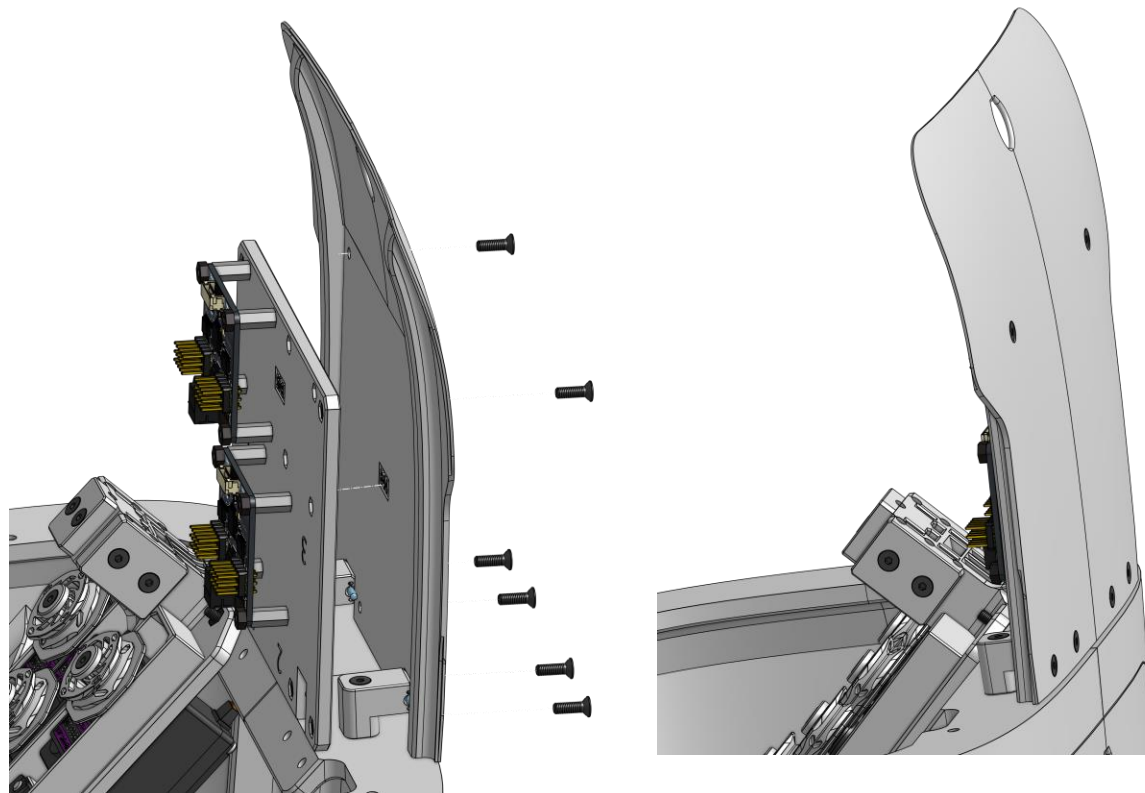
Connect **B44** to **B45** using 6 x M3 10mm screws.



2



10x



## Step 13a

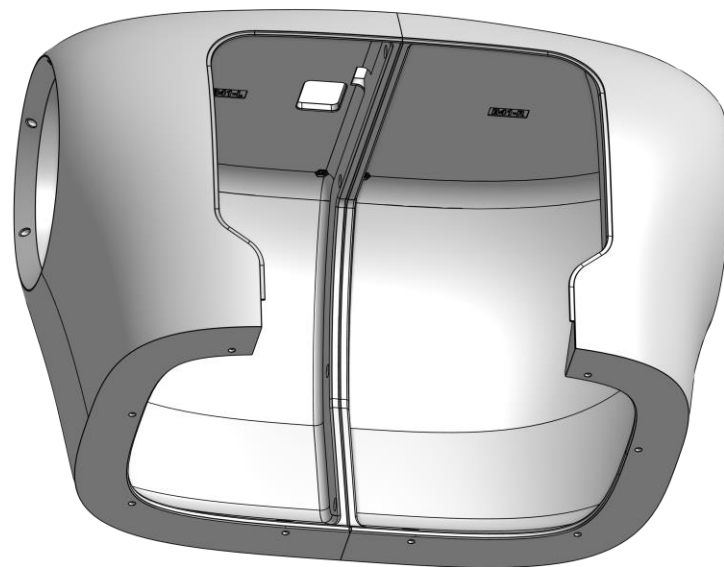
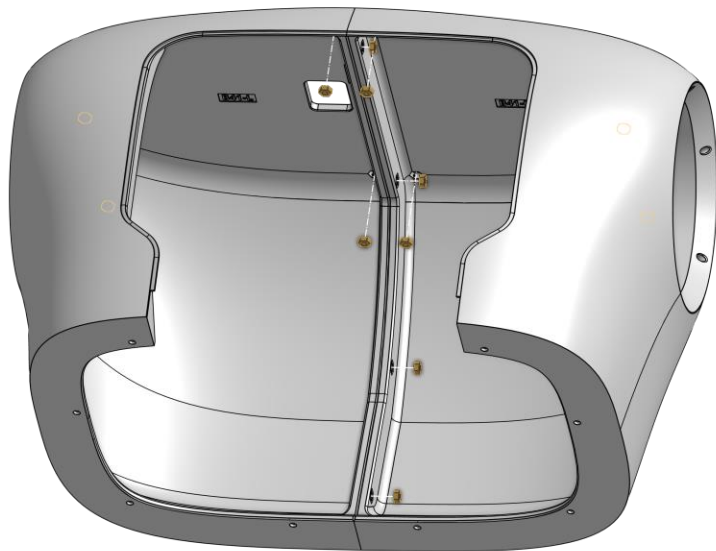
Insert **12 x M3 nuts** into **B41-L** and **B41-R**.



2



12x



## Step 13b

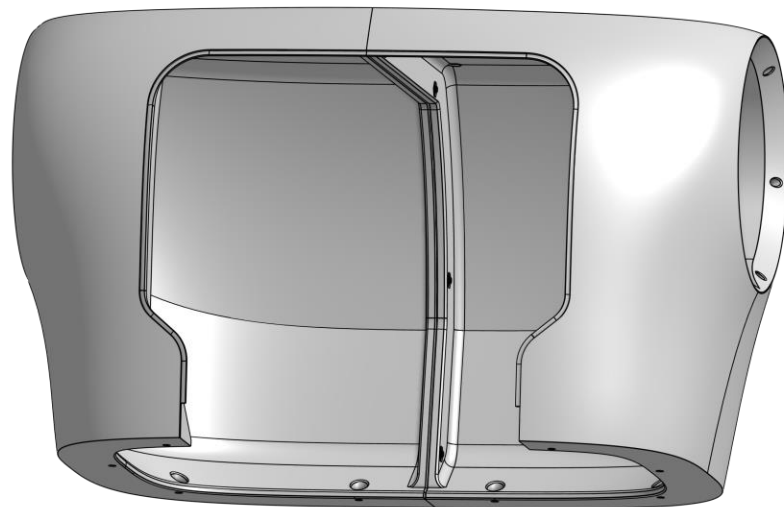
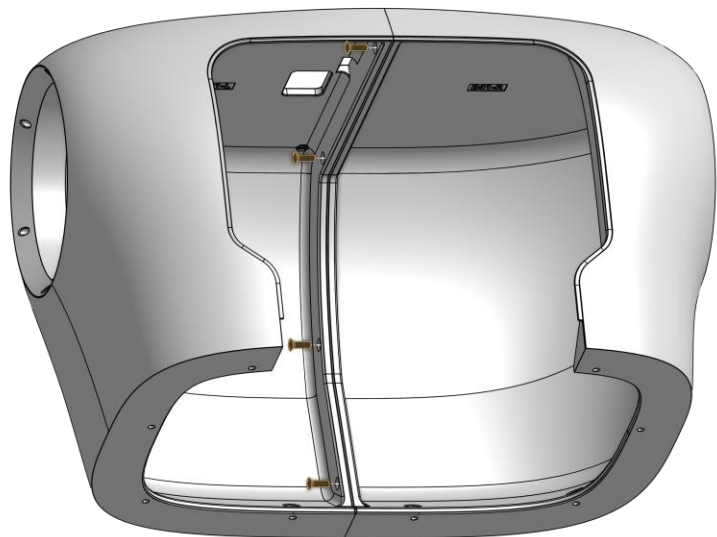
Connect **B41-L** to **B41-R** using 4 x **M3 10mm** screws.



2

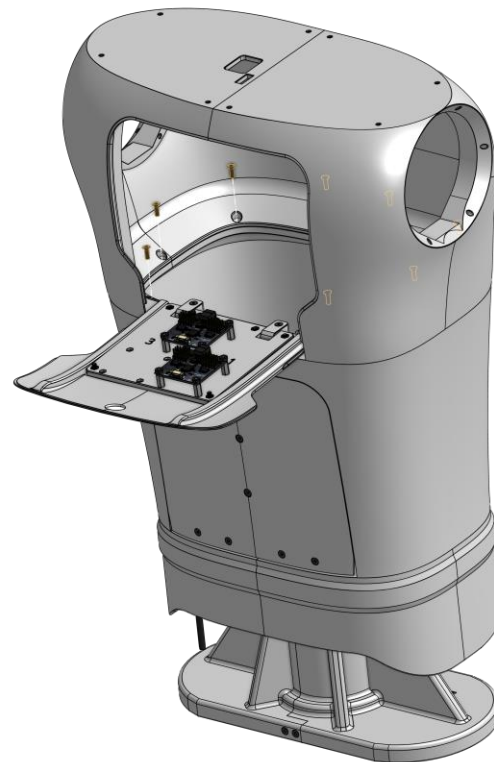
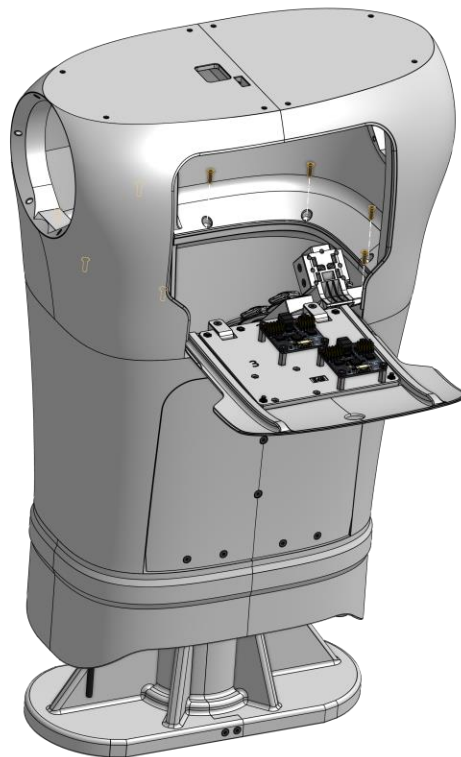
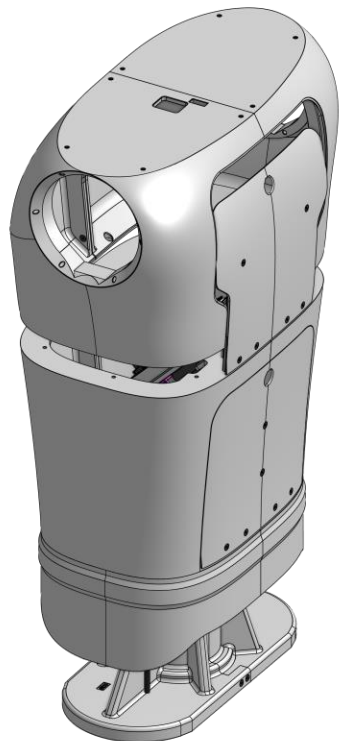


4x



## Step 13c

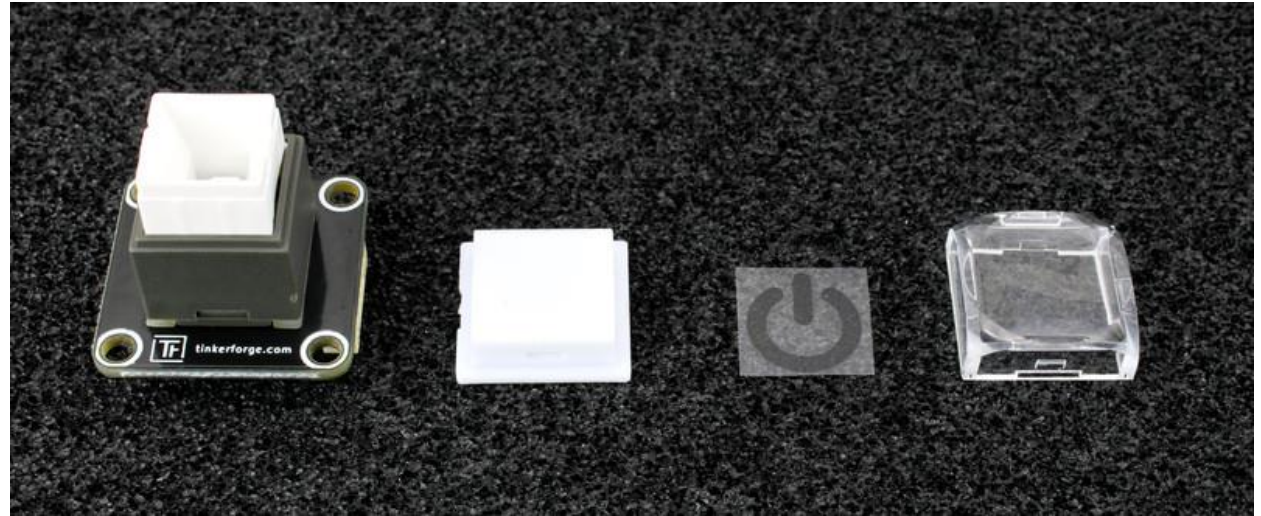
Connect **Clavicles** to **assembly** using 8 x **M3 10mm** screws.





## Step 14a

Disassemble **3 x E25**

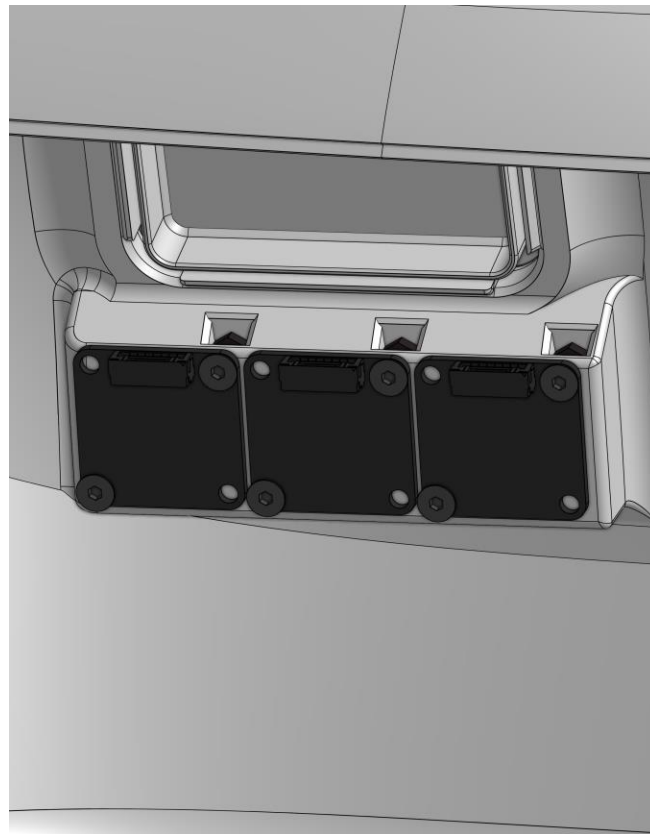
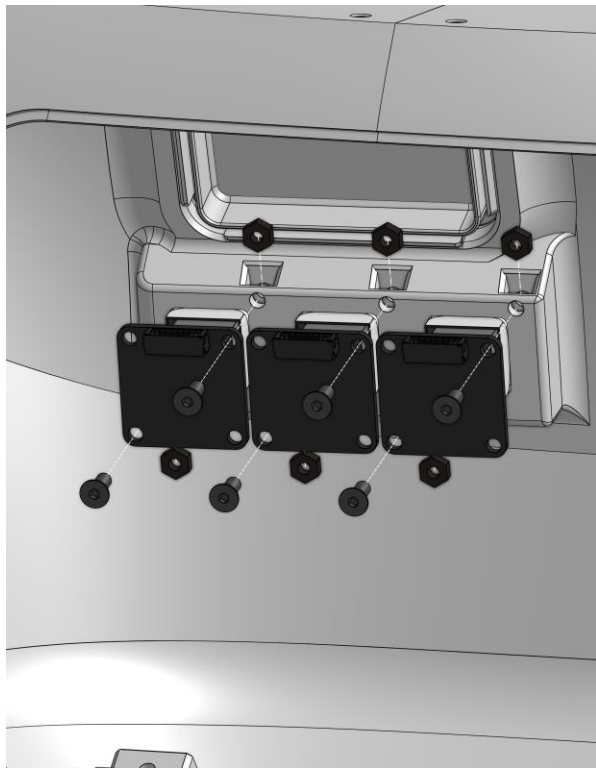


## Step 14b

Connect **3 x E25** to **B41-L** using **6 x M3 nuts** and **6 x M3 8mm screws**



2



## Step 14c

Reassemble **3 x E25**



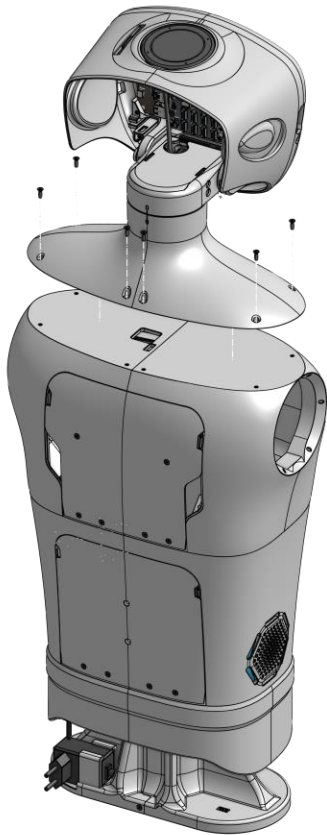
## Step 14d

Push **B55-logo** in **B41-L**



## Step 15

Assemble neck and head to upperbody using **8 x M3 10mm screws**.



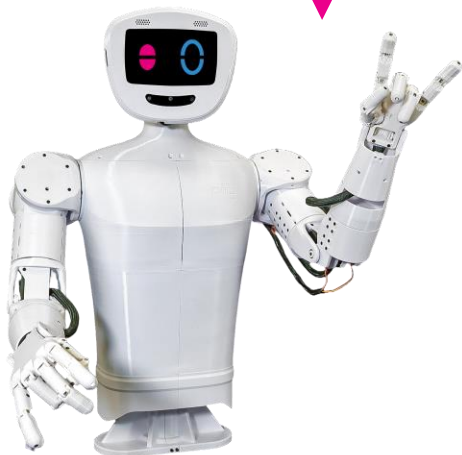
2



8x

## Congratulations

You did a great job, pib's upper body is assembled!



Well done!



## Do you need support?

Or do you need our pib.Box with all non-printable parts?

Or maybe you have some new ideas and improvements?

Please contact us.



**team@pib.rocks**

Send us an email.



**discord.com/invite/GRdpyeDu7P**

Join us on Discord.



**shop.pib.rocks**

Order non-printable parts for pib.