



How to build your robot

www.pib.rocks/build

instructions for:

Pi connect

v2024



PRINT

BUILD

DEVELOP

YOUR OWN ROBOT

Build it better: our suggestion for assembling pib



We recommend **tools** for each step. These are a suggestion, you can of course also use other tools.



1-5

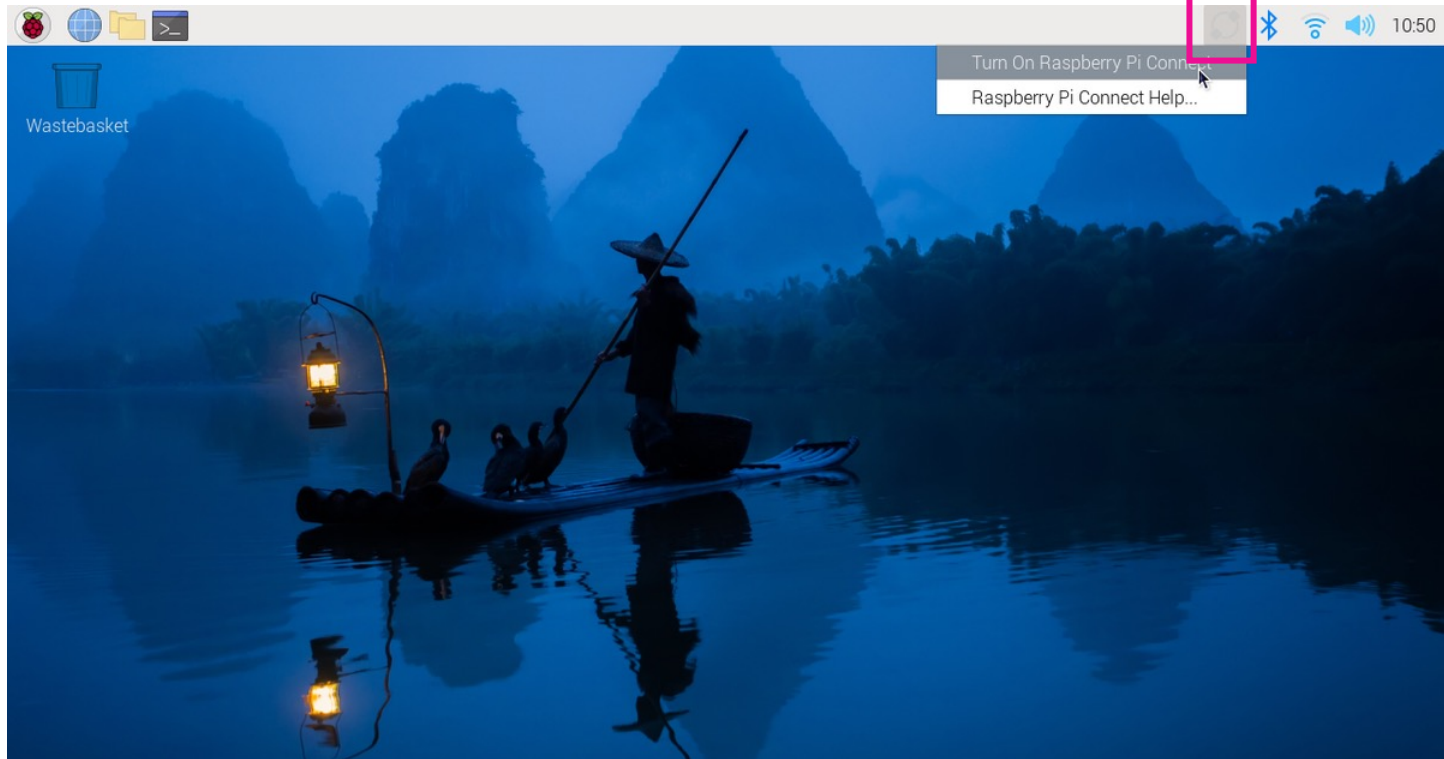
We have categorized each step according to its **difficulty** - from **1-5** (1 being the easiest, 5 the hardest)



We also show you which **non-printable parts** you need for each step

Step 1a

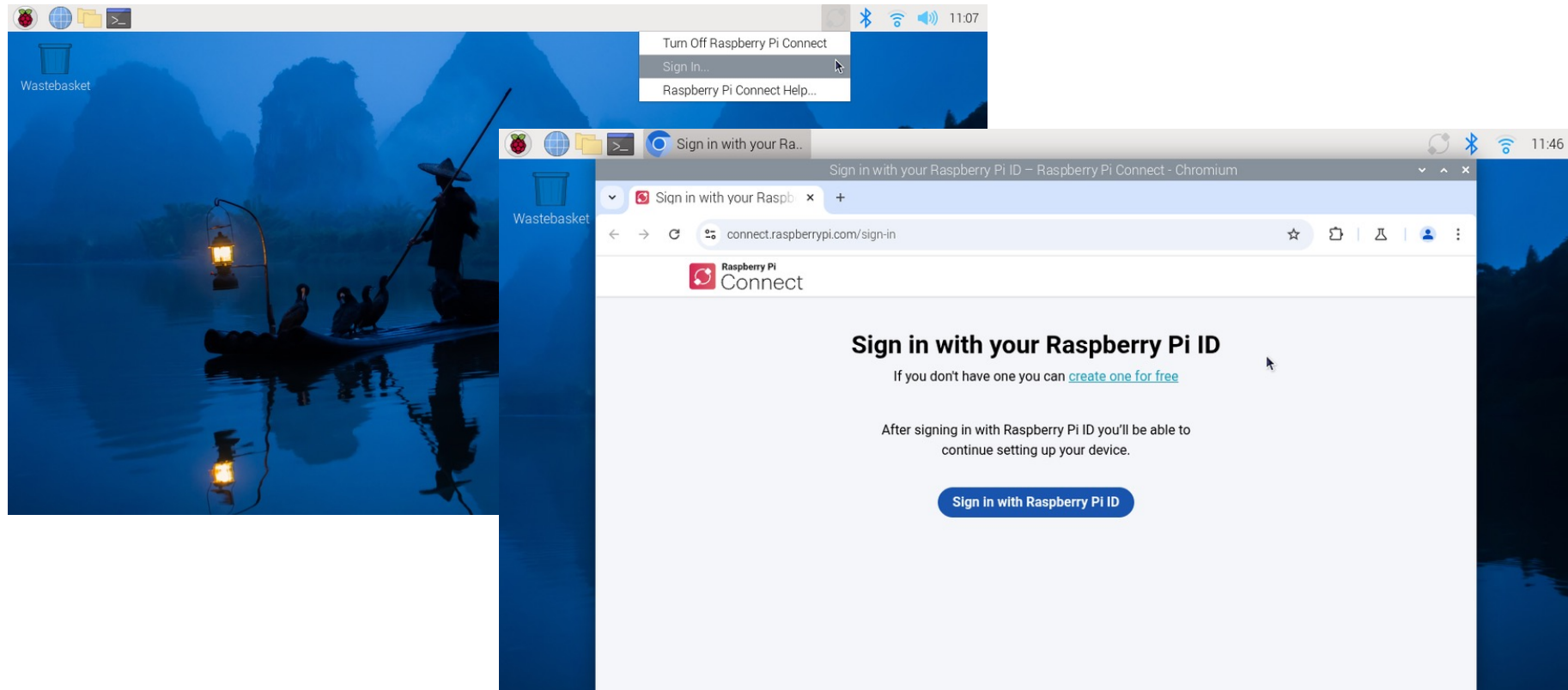
Click on the top right connect icon, then click on turn on Raspberry Pi connect



Step 1b



Click on sign in and then sign in with Raspberry Pi ID



Step 1c



Name your device a recognizable name and click on create token

The screenshot shows the Raspberry Pi Connect web interface. At the top, there is a header with the Raspberry Pi logo and the text 'Raspberry Pi Connect'. On the right side of the header, there is a red circular icon containing a white person silhouette. The main content area has a light blue background and features the heading 'Name your new device' in bold black text. Below this heading is a white rounded rectangle containing a text input field and a blue button labeled 'Create device and sign in'. At the bottom of the interface, there is a dark grey footer section with the heading 'Need help?' in bold white text. Below this heading is the text 'Find the answer to your question in our documentation, or seek help on our forums.' and two white buttons with rounded corners labeled 'Read documentation' and 'Browse forums'.

Step 2

Click on connect via, then screen share



1

The screenshot shows the Raspberry Pi Connect web interface. At the top, there's a header with the Raspberry Pi logo and 'Connect' text. Below that, a navigation bar shows 'Personal' and a user profile icon. The main content area is titled 'Devices' and features an 'Add device' button. A table lists devices with columns for 'Device', 'Client version', and 'Last seen'. One device is listed with a redacted name, client version 2.5.2, and status 'Online'. Below the device name, there are buttons for 'Screen sharing' and 'Remote-shell'. A dropdown menu is open next to the device, showing 'Connect via' with a downward arrow, and options for 'Screen sharing' and 'Remote-shell' below it. The bottom of the page has a dark footer with the text 'Need help?' and a link to documentation or forums.

Device	Client version	Last seen
[Redacted]	2.5.2	Online

Buttons: Screen sharing, Remote-shell

Dropdown menu: Connect via, Screen sharing, Remote-shell

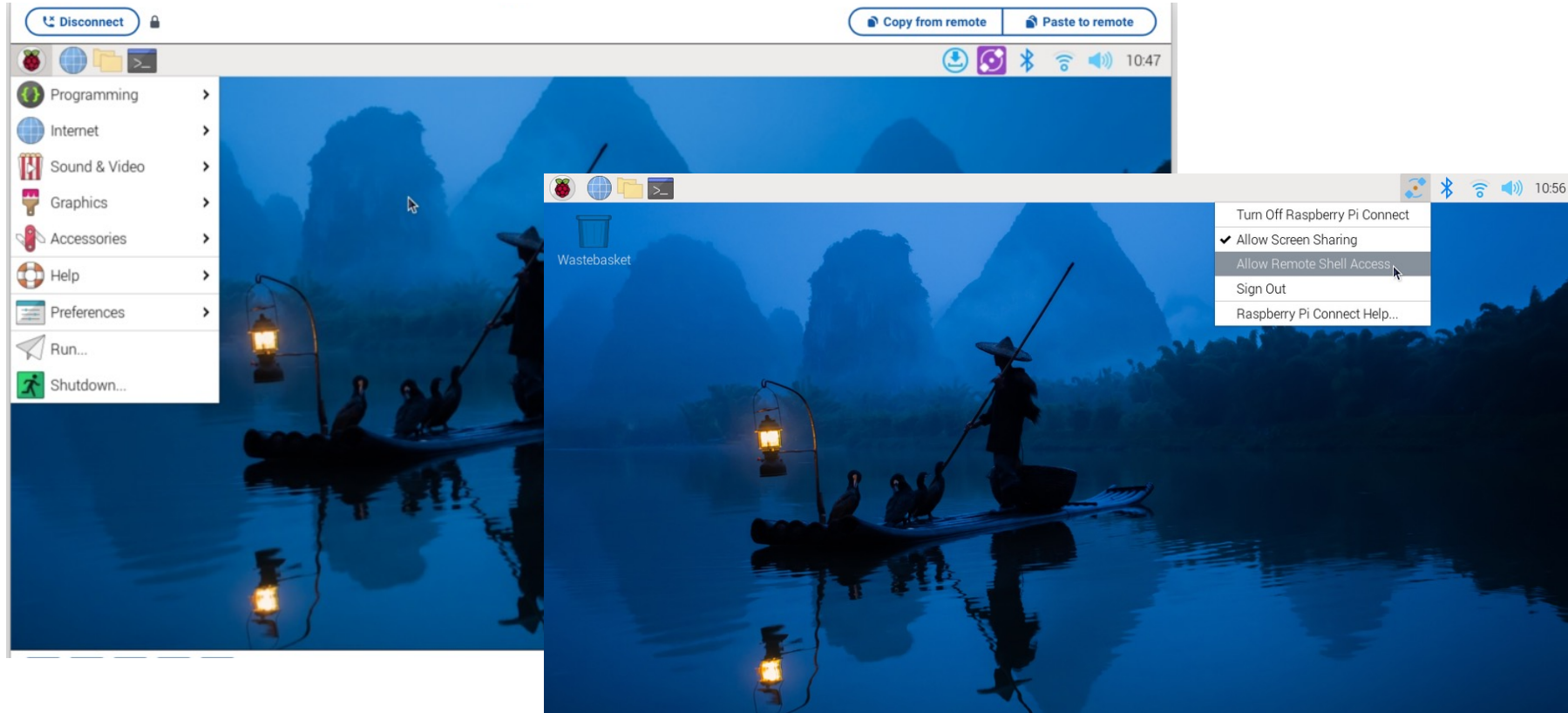
Need help?

Find the answer to your question in our documentation, or seek help on our forums.

Step 3

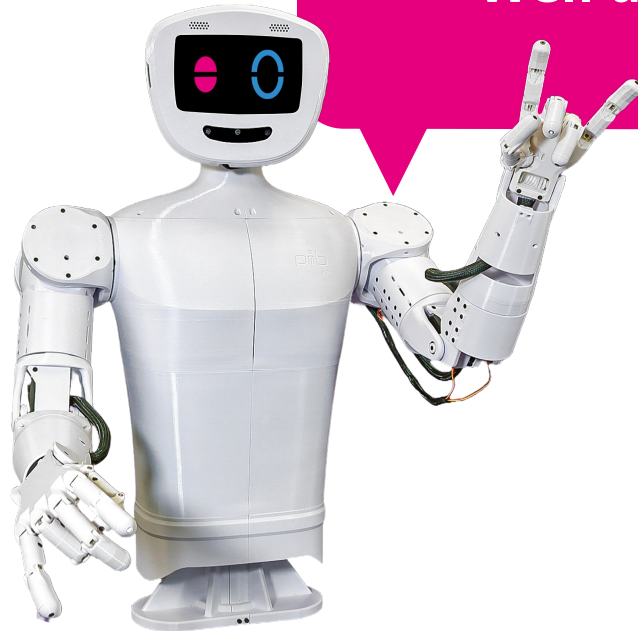


You should now see your RPi screen, do not forget to allow screen sharing



Congratulations

You did a great job, you have initiated pi connect !



Well done!

Do you need support?

Or do you need our pib.Box with all non-printable parts?

Or maybe you have some new ideas and improvements?

Please contact us.



team@pib.rocks

Send us an email.



discord.com/invite/GRdpyeDu7P

Join us on Discord.



shop.pib.rocks

Order non-printable parts for pib.