



## How to build your robot

[www.pib.rocks/build](http://www.pib.rocks/build)

assembly instructions for:

### UPPER BODY

v2024



PRINT

BUILD

DEVELOP

YOUR OWN ROBOT

## Printable parts

### Printable parts

4 x **B48**-Hinge

2 x **B49**-Hinge\_Plate

**B51**-Servo\_Array\_Scaffold

2 x **B52**-Tube\_Holder\_Side

**B53**-Tube\_Holder\_Top

2 x **B60p**-M3-M4.5\_Adapter

**C60**-Flange\_Inner\_Shoulder

**C61**-Motor\_Bracket\_Inner\_Shoulder

**C62**-Ringflange\_Inner\_Shoulder

**C63**-Motor\_Axis\_Inner\_Shoulder

**C64**-Motor\_Axis\_Cap\_Inner\_Shoulder

### Printable parts

**B19**-Flat\_stand\_right

**B20**-Flat\_stand\_left

7 x **B25**-Wire\_connector

6 x **B26**-Wire\_connector\_pawl

7 x **B27**-Wire\_connector\_mount

1 x **B31**-Wire\_connector\_pawl\_forearm

**B41-L**-Clavicle\_left

**B41-R**-Clavicle\_right

**B42-L**-Ribcage\_Left

**B42-R**-Ribcage\_Right

**B43-L**-Ribcage\_Lower\_Left

**B43-R**-Ribcage\_Lower\_Right

**B44**-Electronics\_back

**B45**-Electronics\_base

**B46**-Power\_back

**B47**-Power\_holder

## Non-printable parts

You will also need the following non-printable parts from our pib.Box Master.

If you do not have it yet, you can buy in our shop <https://shop.pib.rocks>.

### Non-printable parts - Electronics

2 x **E03**-TinkerForge ServoBricklet

6 x **E07**-MG996R

1 x **E09**-DS3225

1 x **E15**-DS5180SSG

1 x **E16**-RPi Power Supply

1 x **E17**-GPIO\_Header

1 x **E24**-Relay

### Non-printable parts

116 x **S01** M3 nuts

8 x **S02** M3 6 mm screws

52 x **S04** M3 10 mm screws

23 x **S05** M3 12 mm screws

11 x **S06** M3 16 mm screws

8 x **S08** M3 20 mm screws

2 x **S09** M3 22 mm screws

7 x **S11** M3 30 mm screw

7 x **S13** M3 40 mm screws

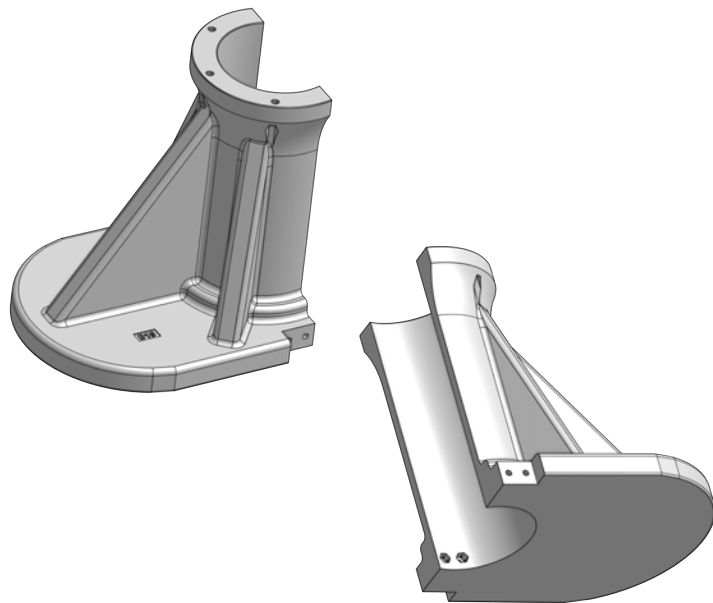
4 x **M08** 20 mm metal rods

1 x **M04** Ballbearing

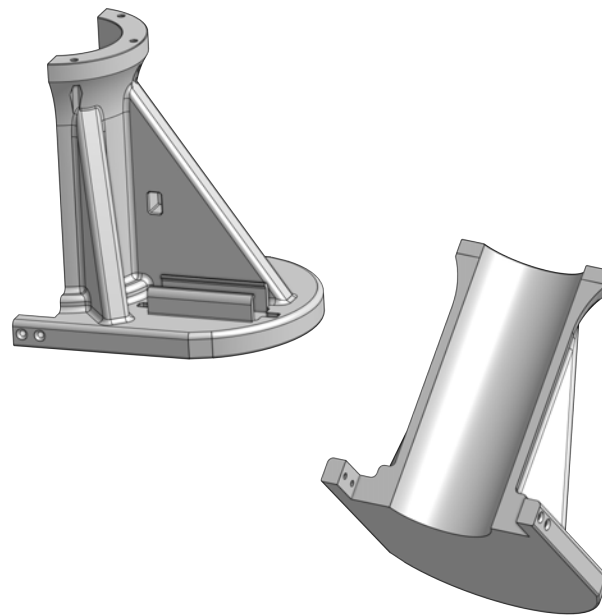
8 x **M13** Distancer

## Printable parts - Overview

B19-Flat\_stand\_right

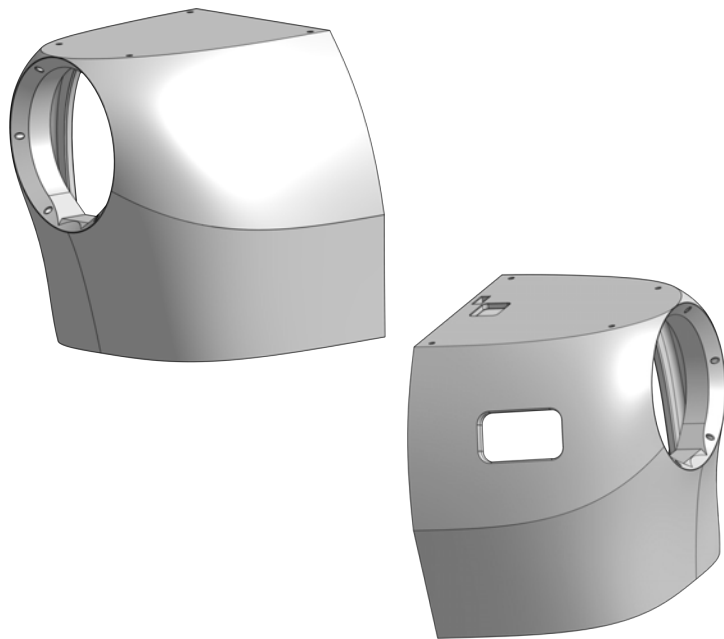


B20-Flat\_stand\_left



## Printable parts - Overview

B41-L/-R-Clavicle\_Left/Right

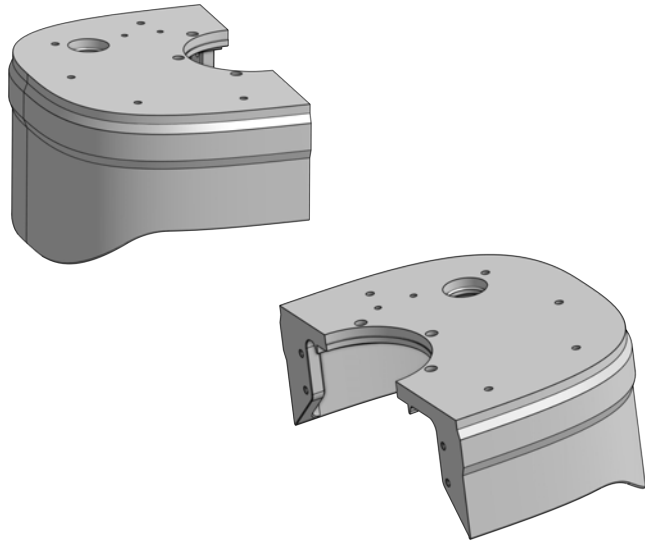


B42-L/-R-Riprage\_Left/Right

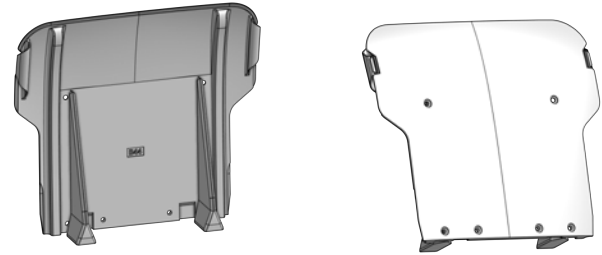


## Printable parts - Overview

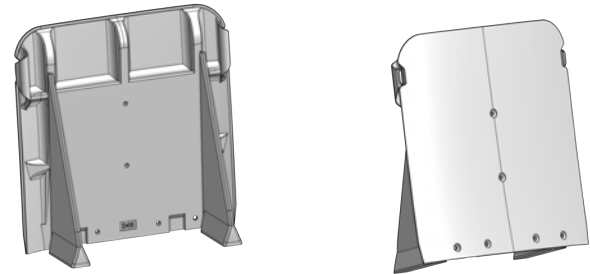
**B43-L/-R-Ripcage\_Lower\_Left/Right**



**B44-Electronics\_back**

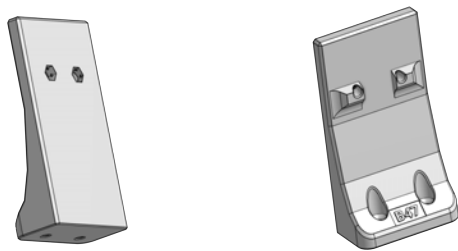


**B46-Power\_back**

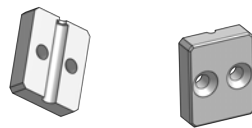


## Printable parts - Overview

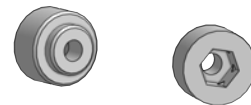
**B47**-Power\_Holder



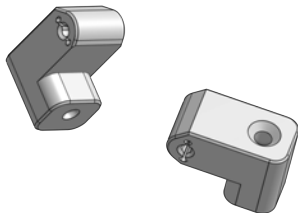
**B53**-Tube\_Holder\_Top



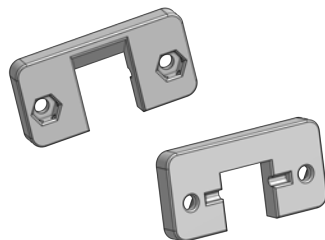
**B60p**-M3-M4.5\_Adapter



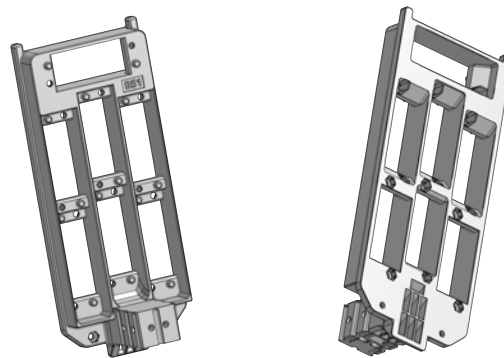
**B48**-Hinge



**B49**-Hinge\_Plate

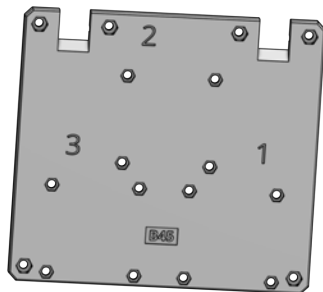


**B51**-Servo\_Array\_Scaffold

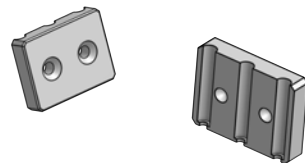


## Printable parts - Overview

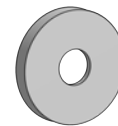
B45-Electronics\_base



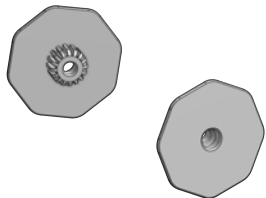
B52-Tube\_Holder\_Slide



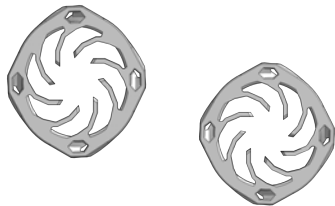
B27-Wire\_connector\_mount



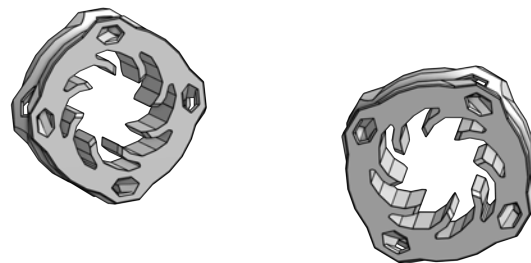
B25-Wire\_connector



B26-Wire\_connector\_pawl



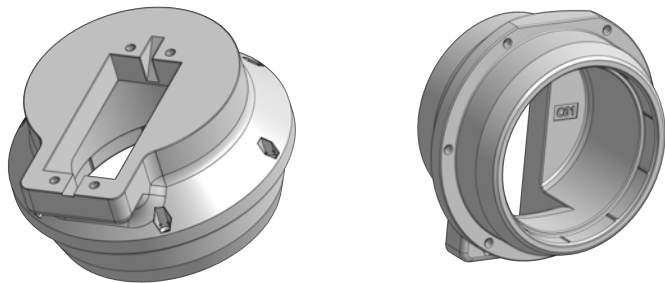
B31-Wire\_connector\_pawl\_forearm





## Printable parts - Overview

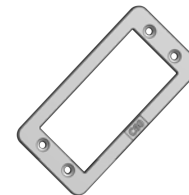
C61-Motor\_Bracket\_Inner\_Shoulder



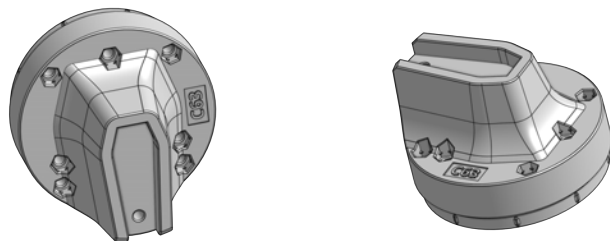
C62-Ringflange\_Inner\_Shoulder



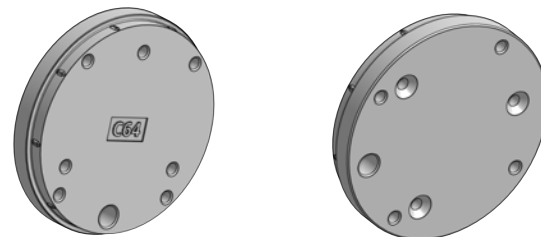
C60-Flange\_Inner\_Shoulder



C63-Motor\_Axis\_Inner\_Shoulder



C64-Motor\_Axis\_Cap\_Inner\_Shoulder



## Build it better: our suggestion for assembling pib



We recommend **tools** for each step. These are a suggestion, you can of course also use other tools.



1-5

We have categorized each step according to its **difficulty** - from **1-5** (1 being the easiest, 5 the hardest)

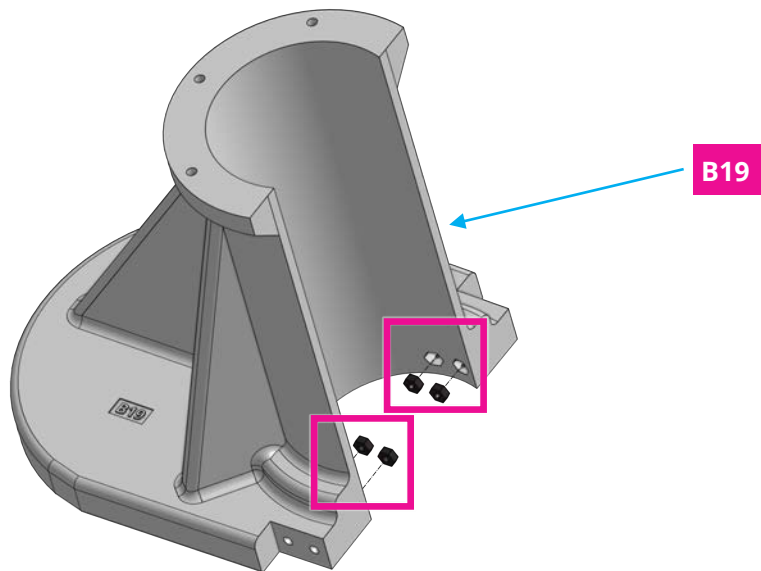


We also show you which **non-printable parts** you need for each step

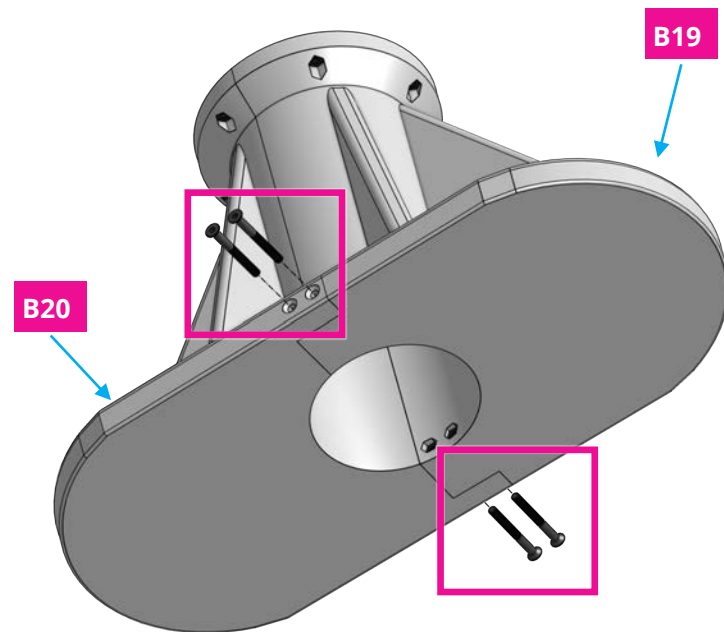
## Step 1



Place **4 x nuts** in the shown spots in **B19**, then use **4 x 30 mm screws** to fix **B20** to **B19**.

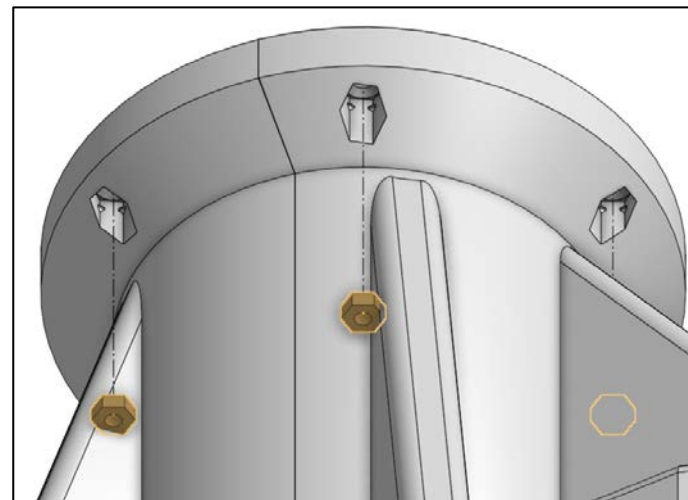
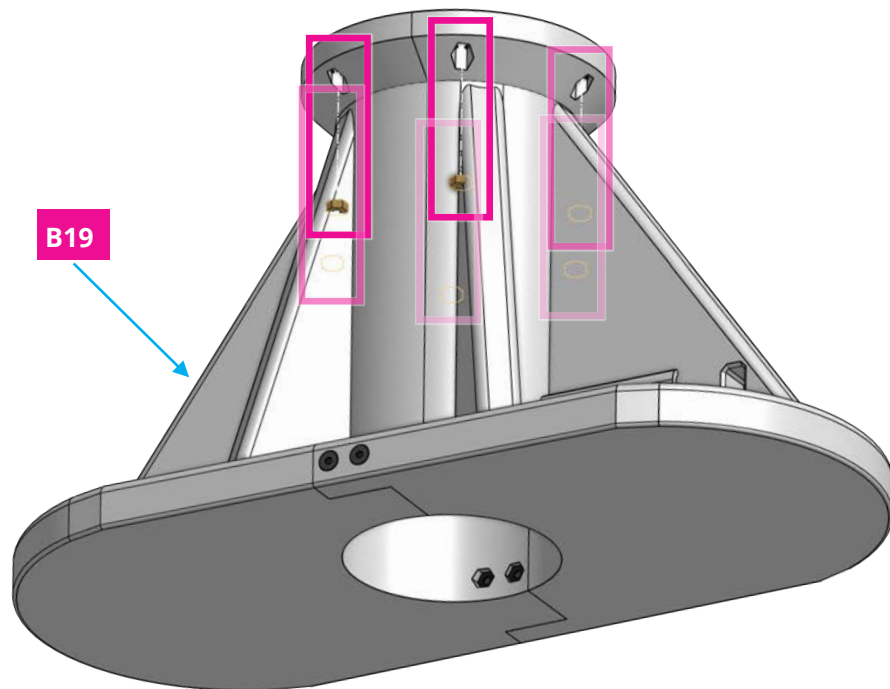


Our tip: use a hammer and gently push the nuts into the holes.



## Step 2a

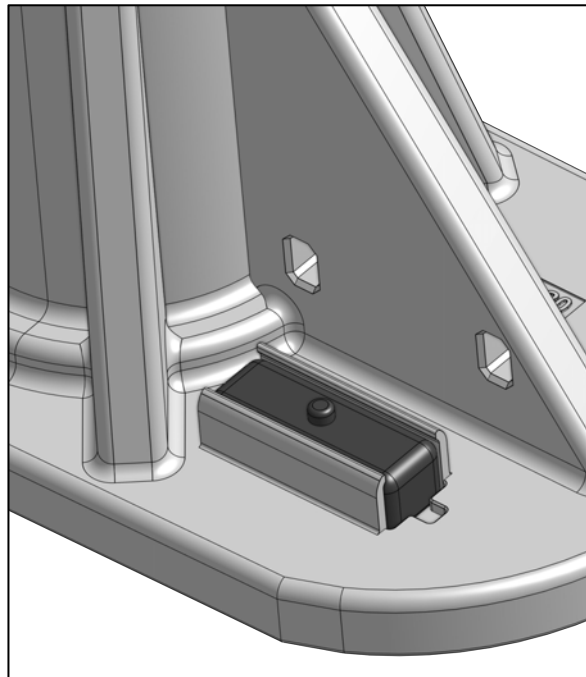
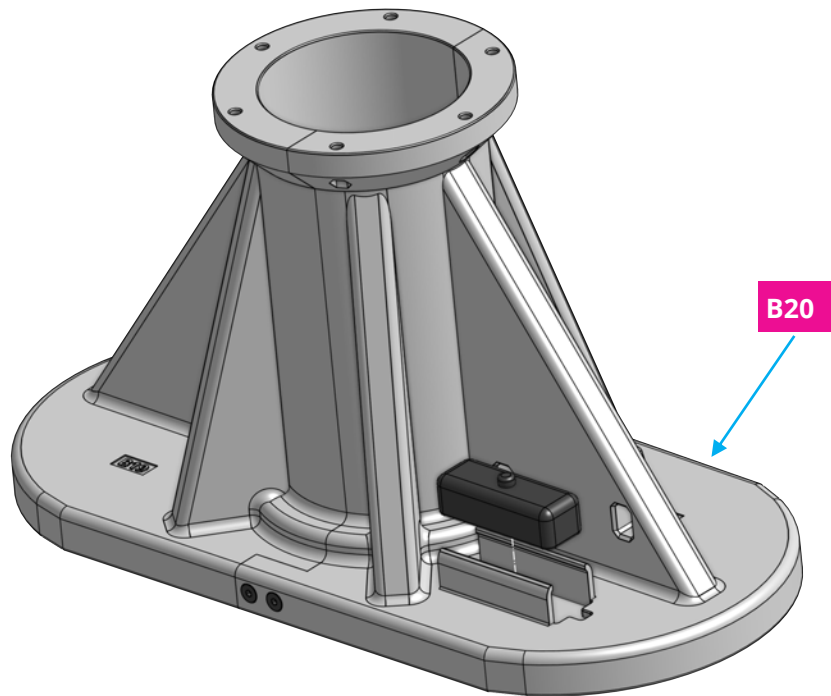
Place **6 x nuts** in shown spots in **B19** and **B20**.



*It is easier to put the nuts into place, when you flip the assembly.*

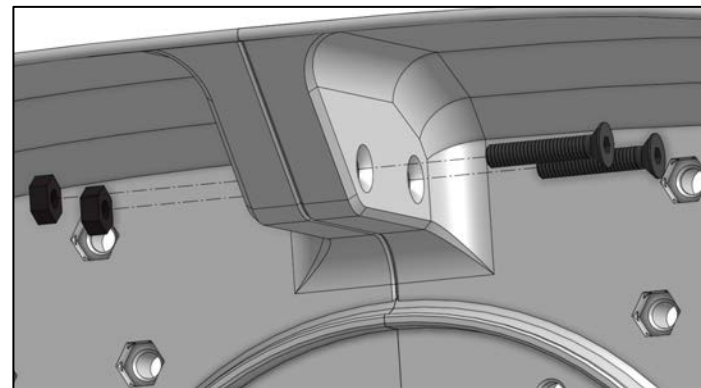
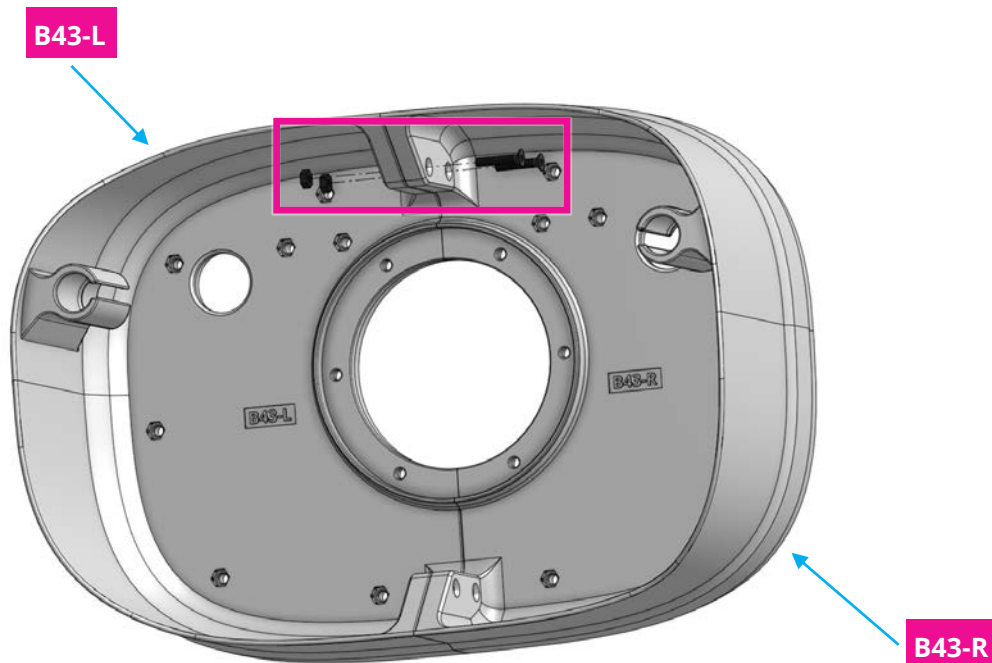
## Step 2b

Place **E16** in **B20**.



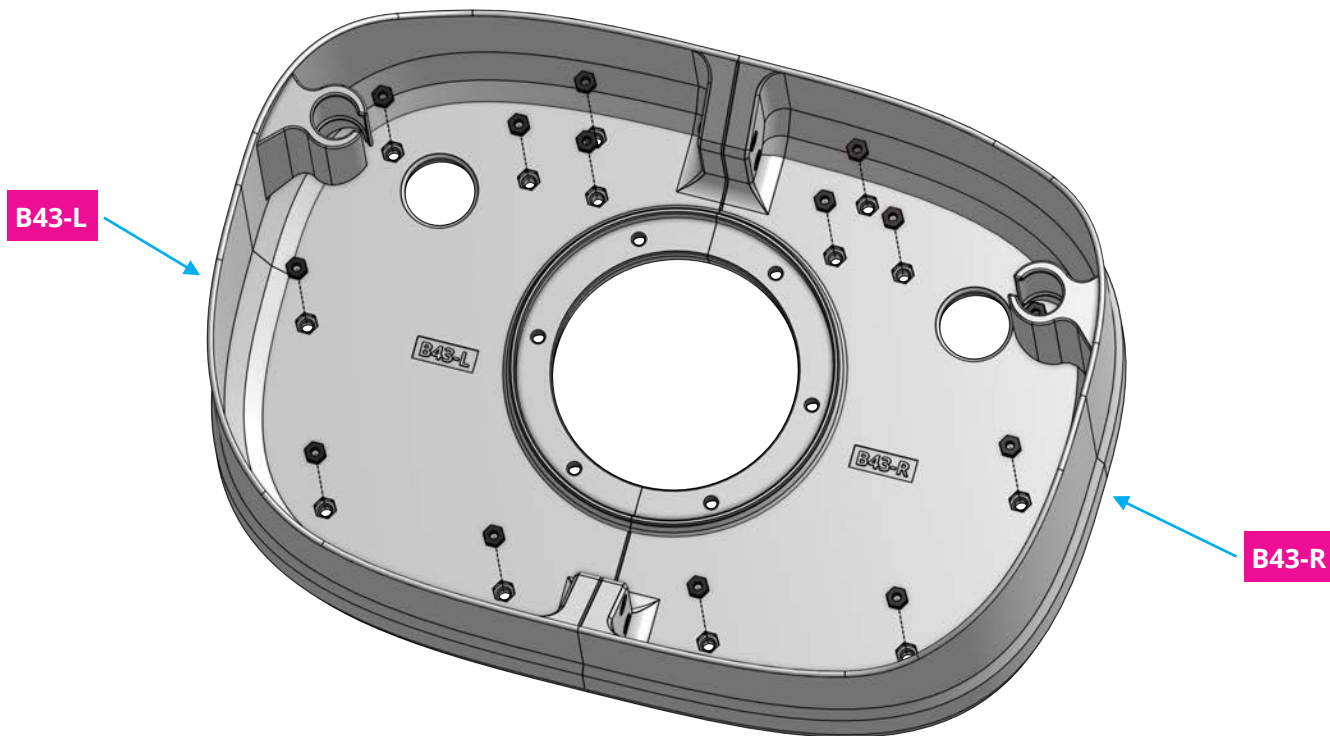
### Step 3a

Connect **B43-L** and **B43-R** using **4 x M3 nuts** and **4 x M3 mm screws**.



### Step 3b

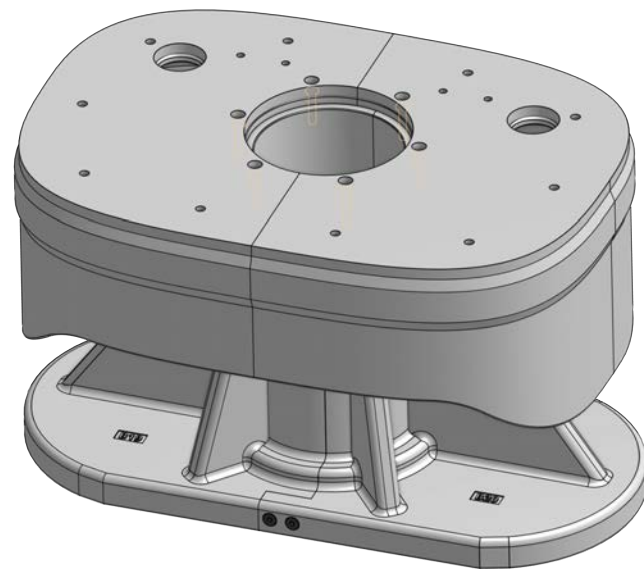
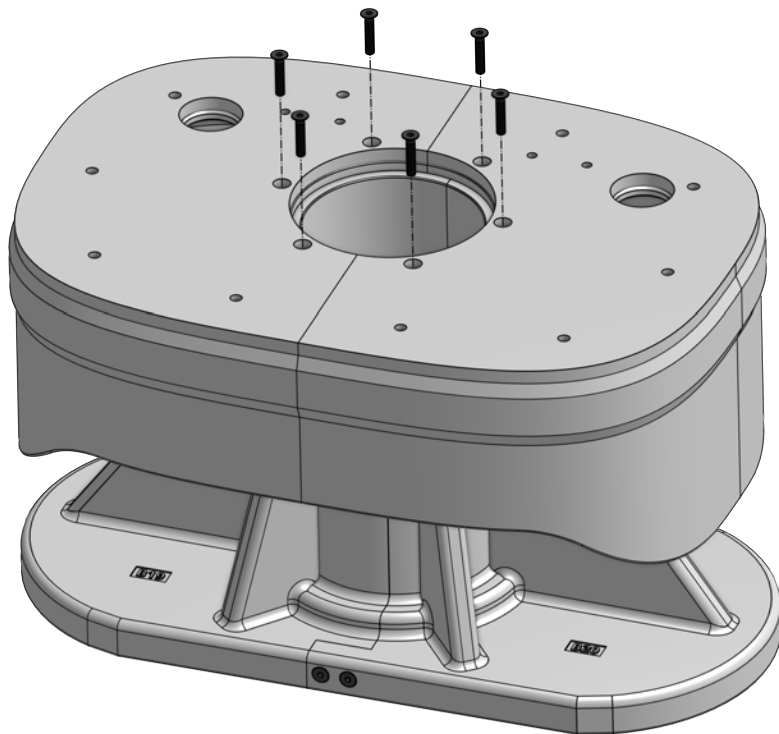
Place **14 x M3** nuts in the assembly.



## Step 4

Connect both assemblies using **6 x 16 mm screws**.

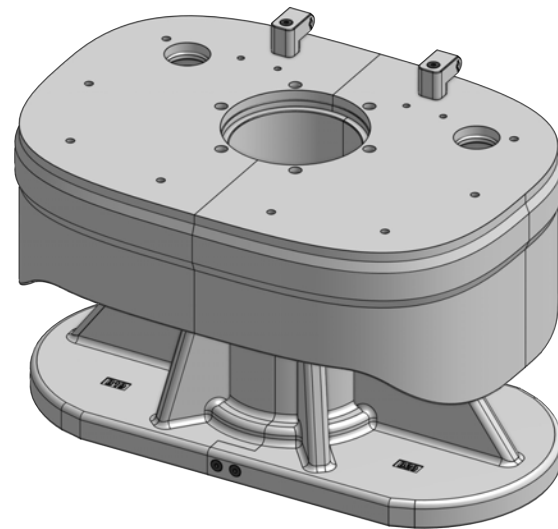
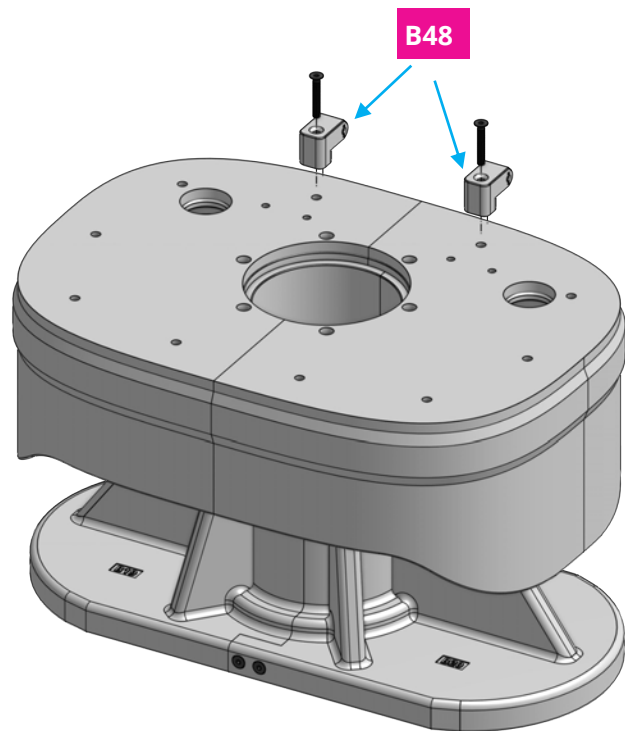
You may apply some gentle force to connect the assemblies.





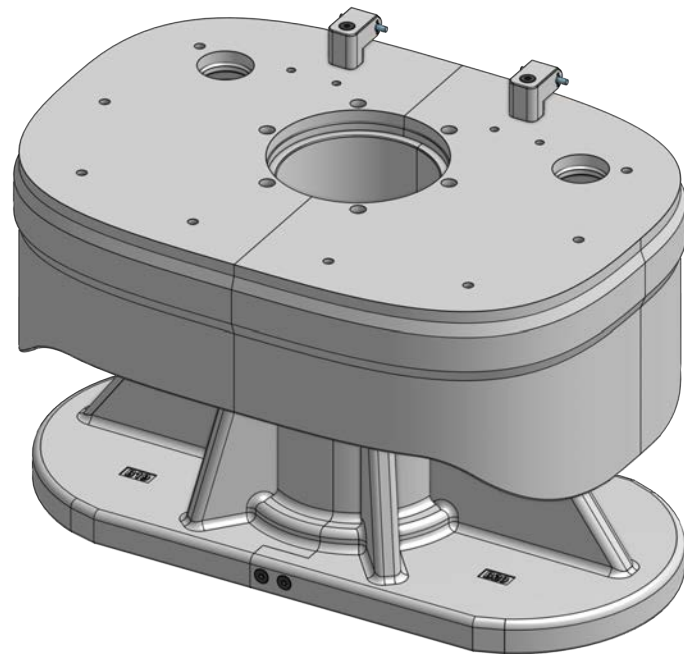
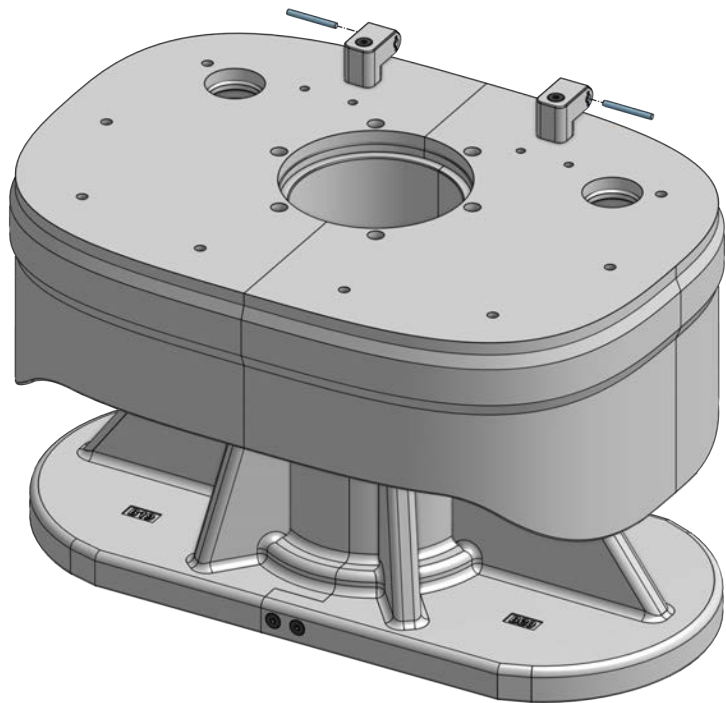
## Step 5

Connect 2 x **B48** to **assembly** using 2 x 20 mm screws.



## Step 6a

Insert 2 x **M08** to both **B48**.



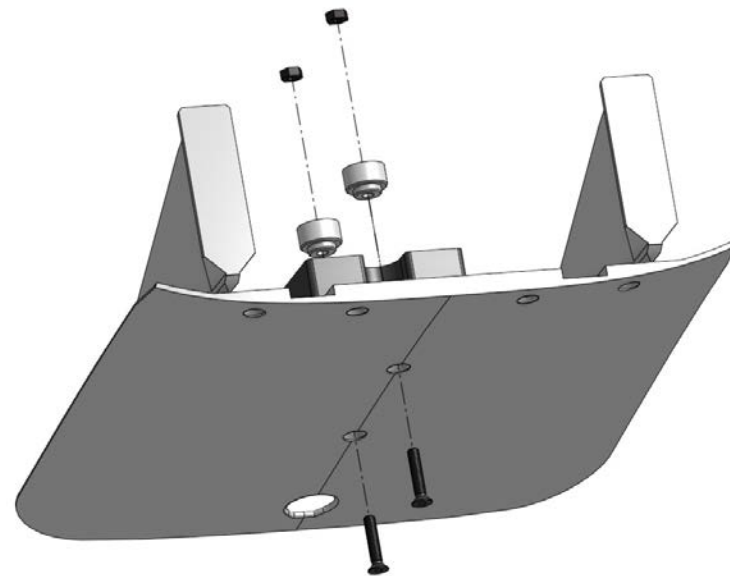
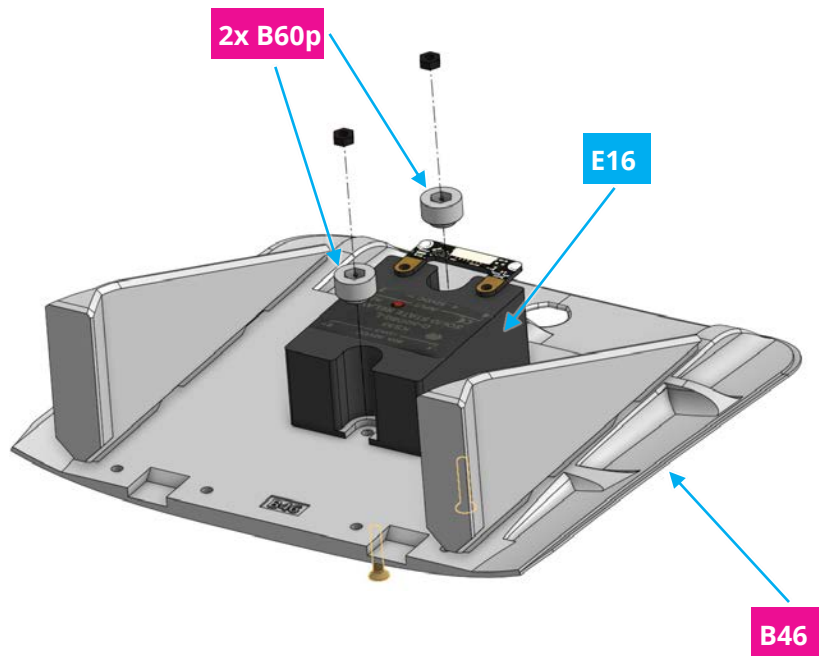
## Step 6b

Connect **solid state relay bricklet** and **solid state relay** using 2 screws from the relay. This assembly will be called **E16** from now on.



## Step 6c

Connect **E16** to **B46** using 2 x **B60p**, 2 x M3 nuts and 2 x M3 16mm screws.



## Step 7

Connect **B46** to the previous assembly using **2 x B49**, **4 x M3 nuts** and **4 x M3 10mm screws**.



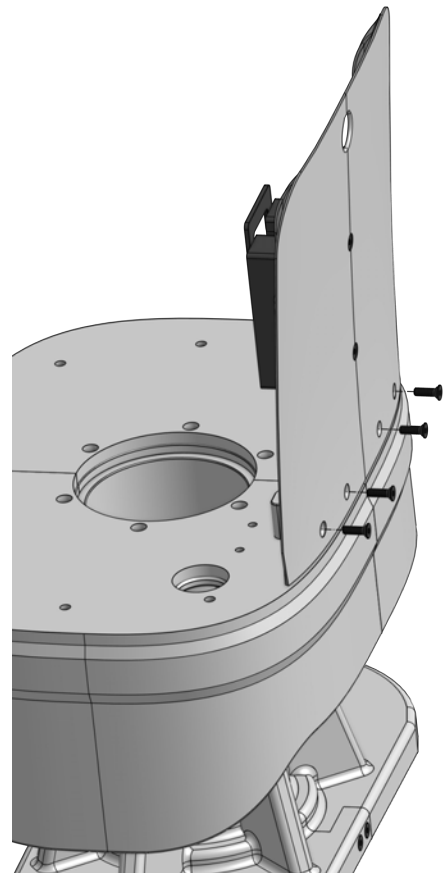
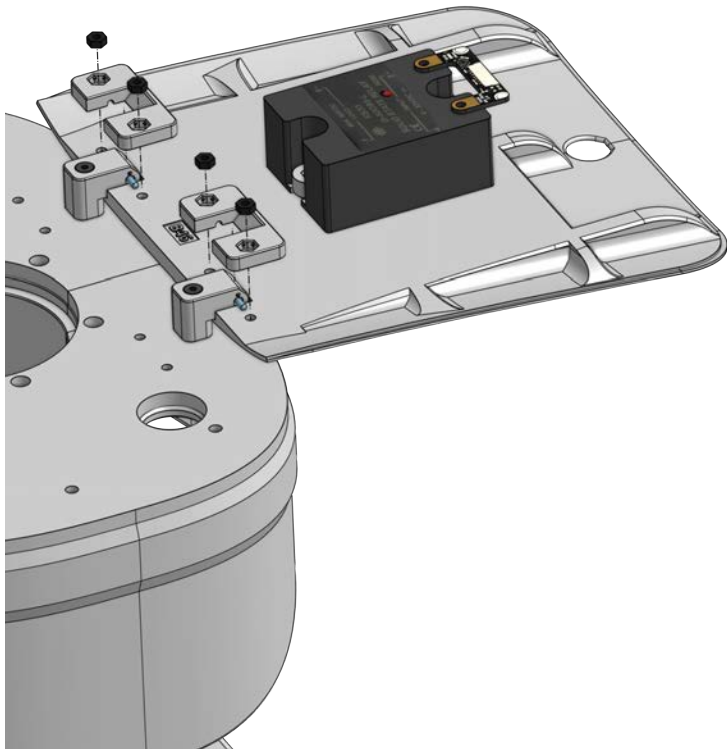
2



4x

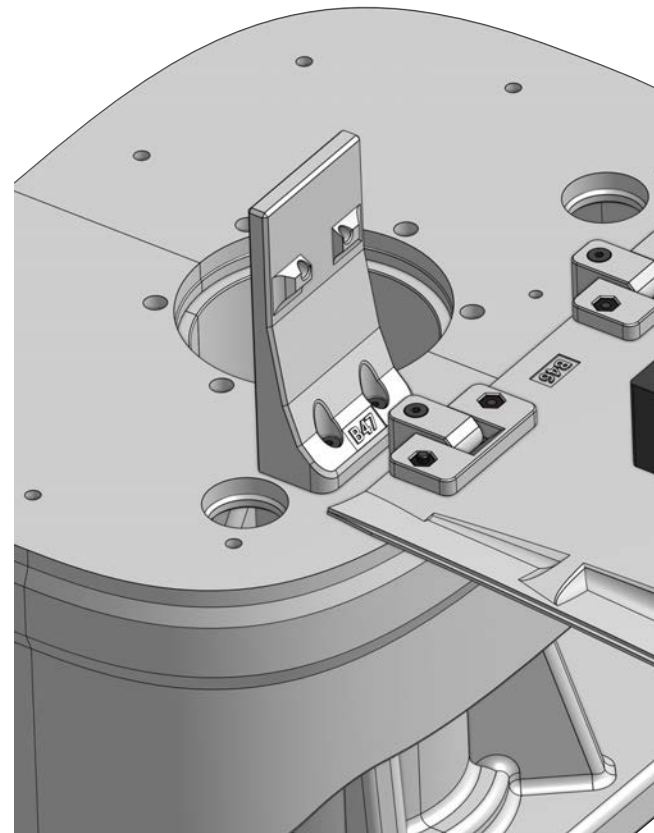
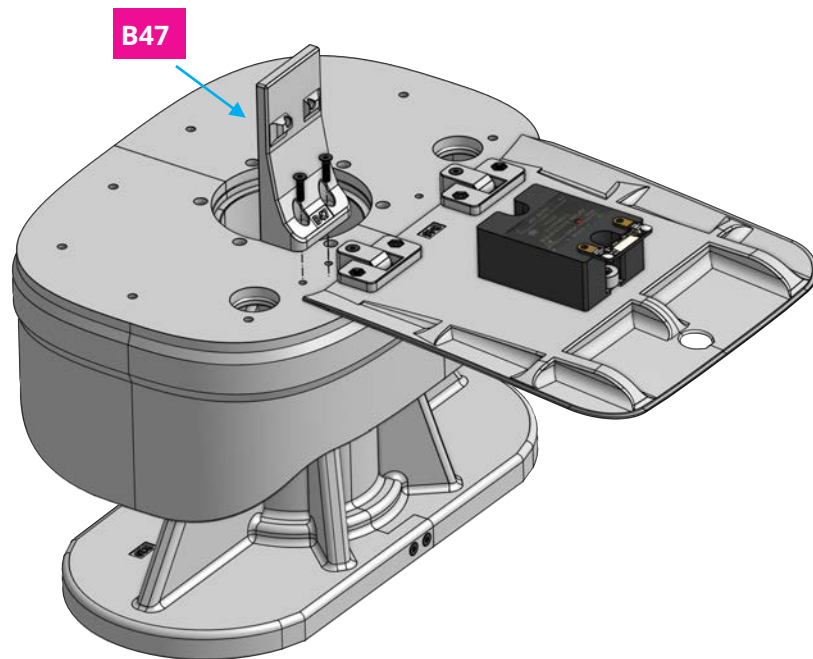


4x



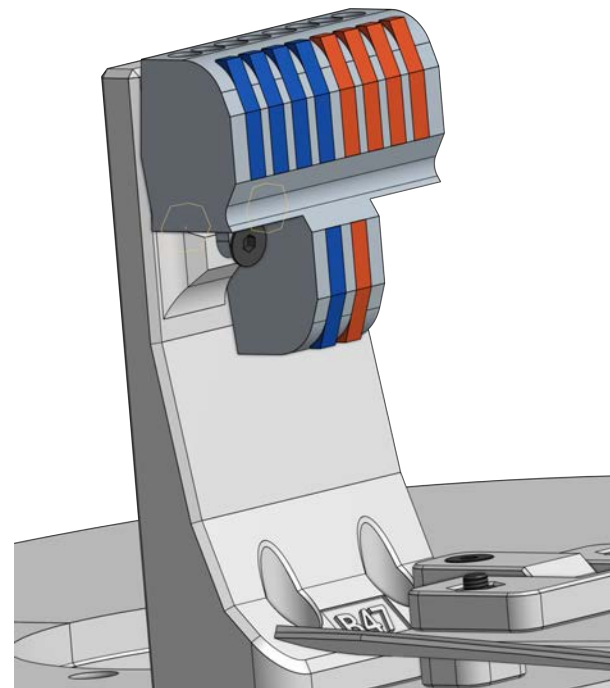
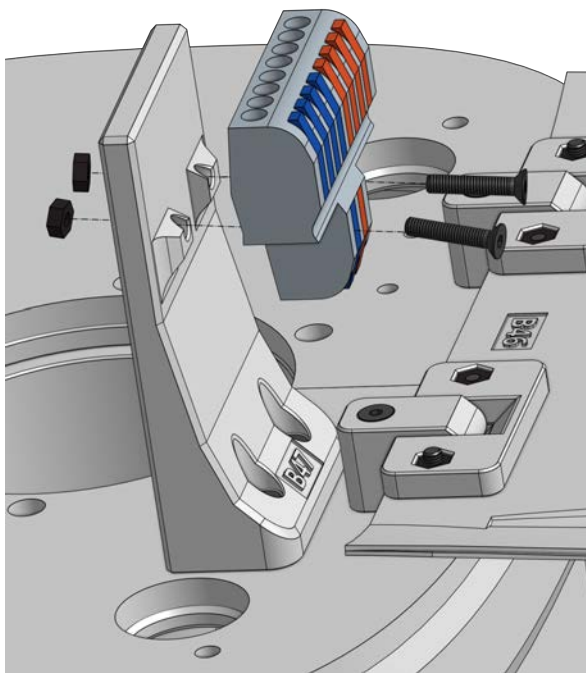
## Step 8a

Connect **B47** to assembly using 2 x **M3 16mm** screws.



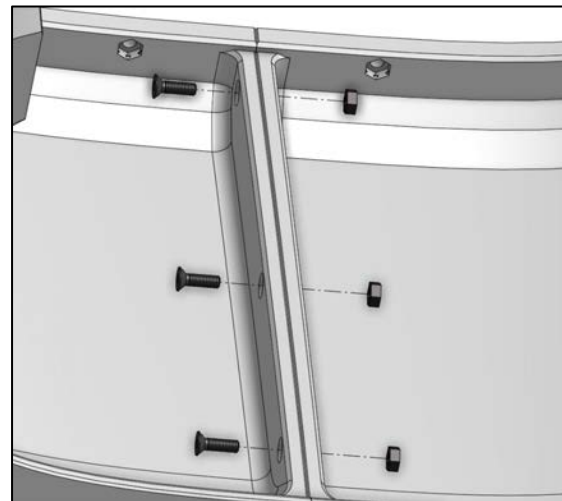
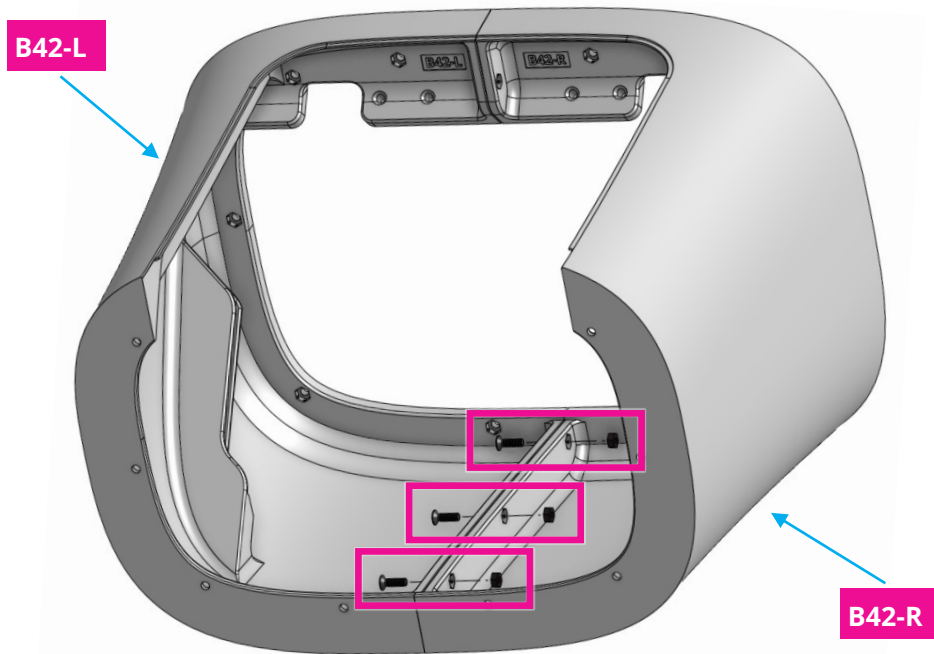
## Step 8b

Connect **E13** to **B47** using **2 x M3 nuts** and **2 x M3 12mm screws**.



## Step 9a

Connect **B42-L** and **B42-R** using **3 x M3 nuts** and **3 x M3 10mm screws**.

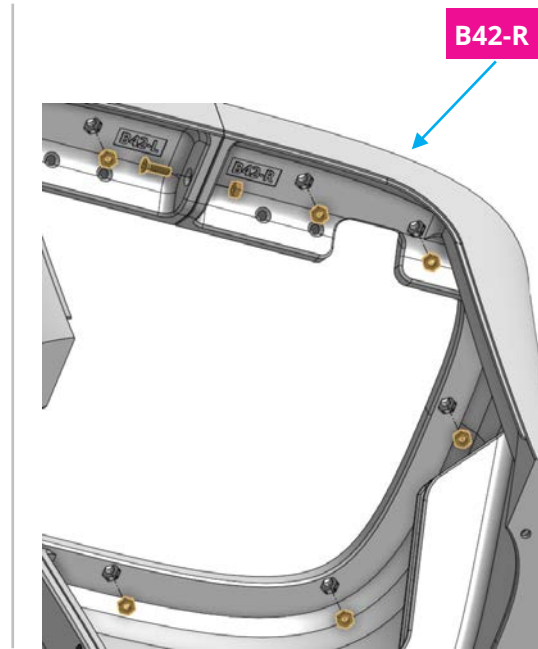
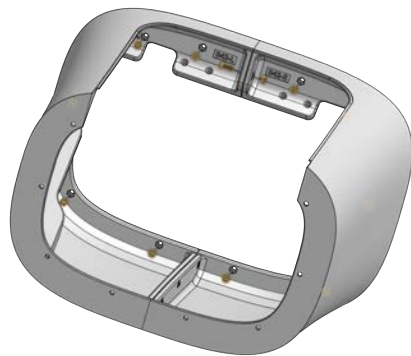
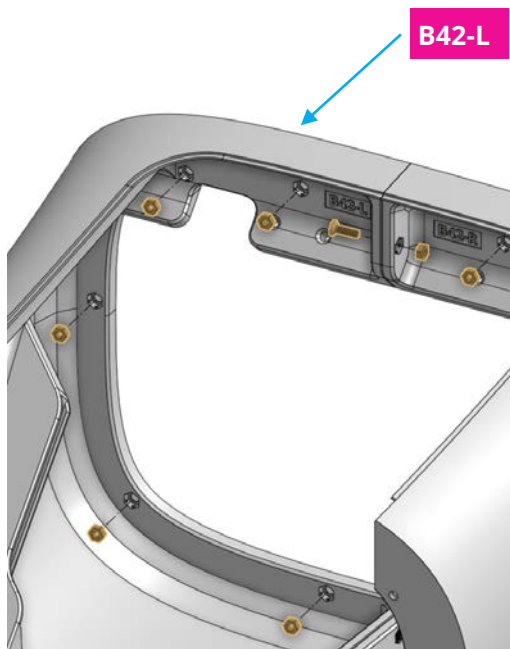




## Step 9b



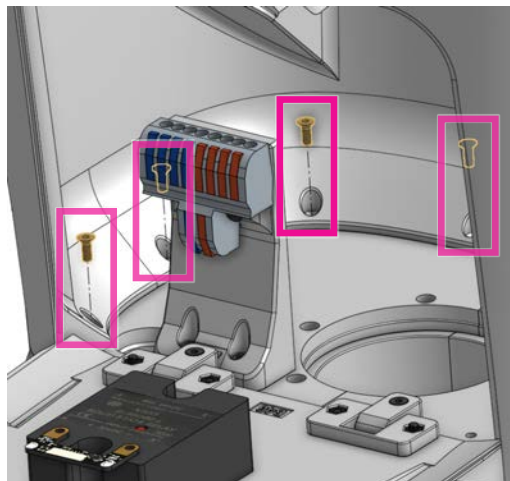
Place **10 x M3 nuts** in **B42** and improve connection between **L** and **R** using **1 x M3 nut** and **1 x M3 10mm screw**.



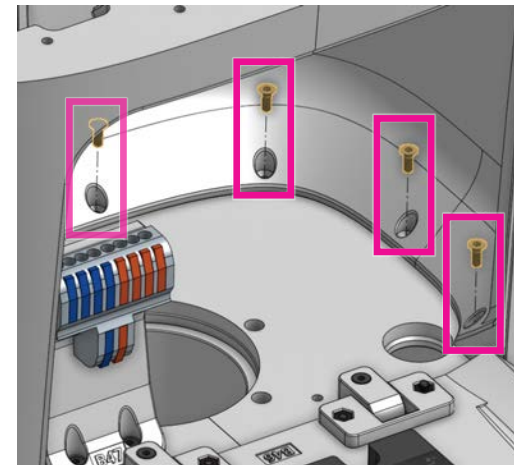
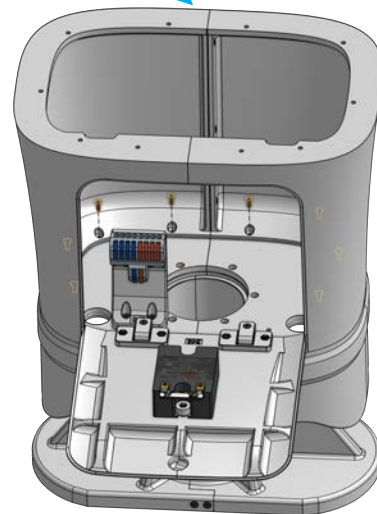
## Step 9c



Connect ribcage (previous assembly) to assembly from step 7 with **8 x M3 12mm screws**.



B42-L+R



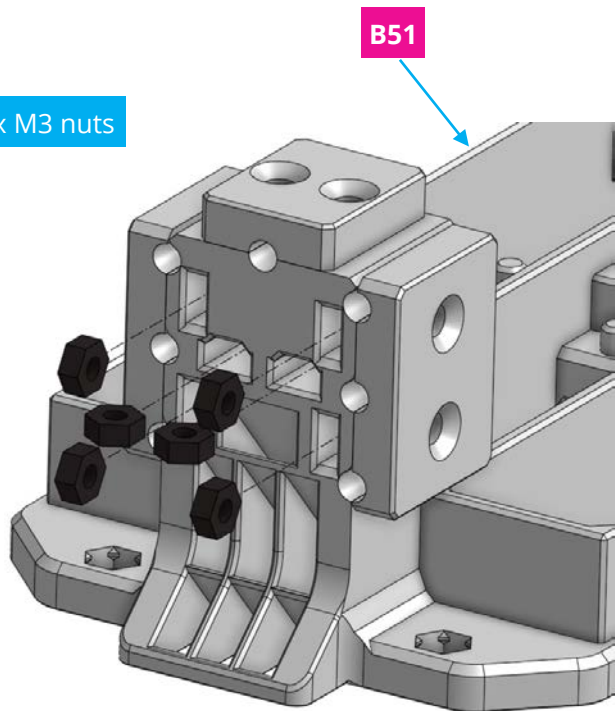
## Step 10a

Place **20 x M3 nuts** in **B51**.



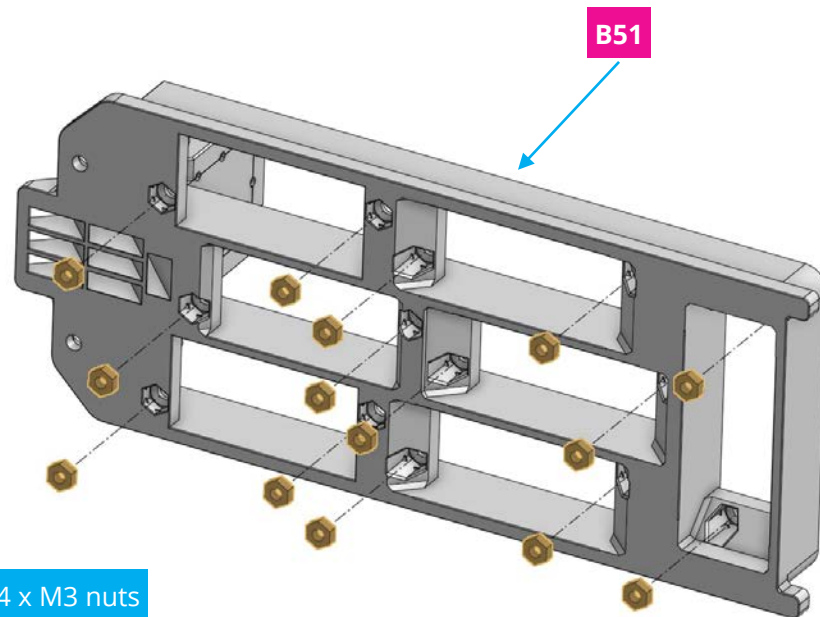
20x

6 x M3 nuts



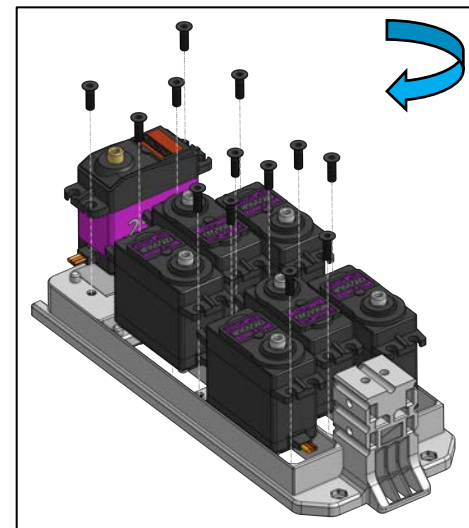
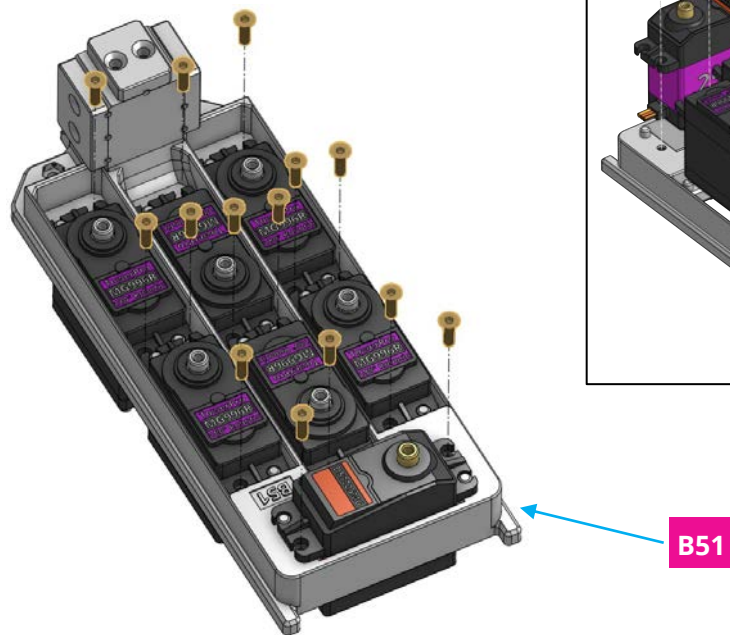
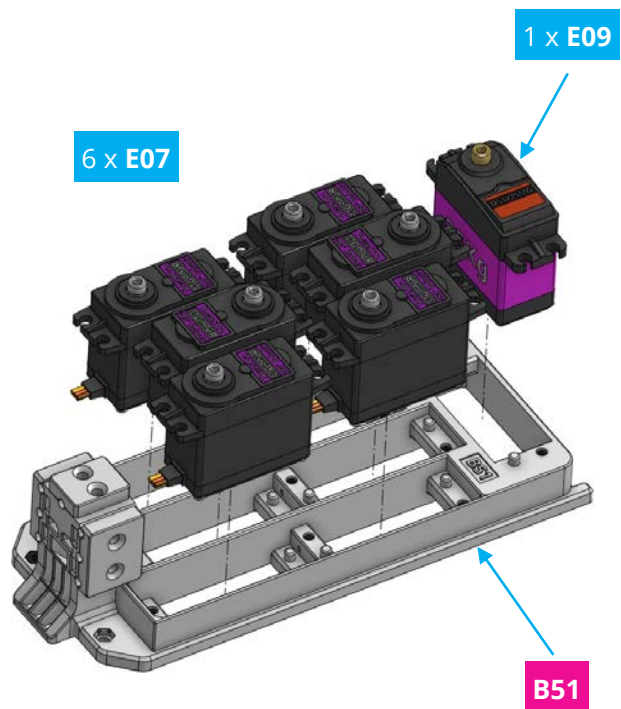
B51

14 x M3 nuts



## Step 10b

Assemble 6 x **E07** motors and 1 x **E09** in using 14 x **M3 10mm** screws.



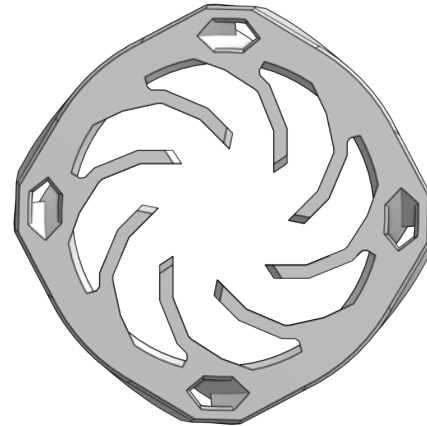
Note

Flip **B26** to switch orientation between clockwise (CW) and counterclockwise (CCW).

Clockwise (CW)



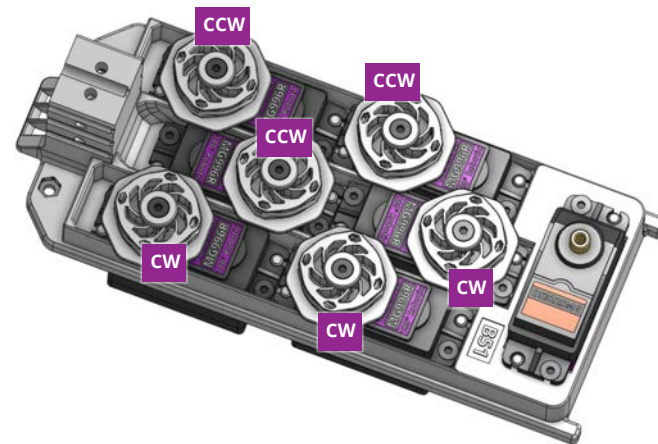
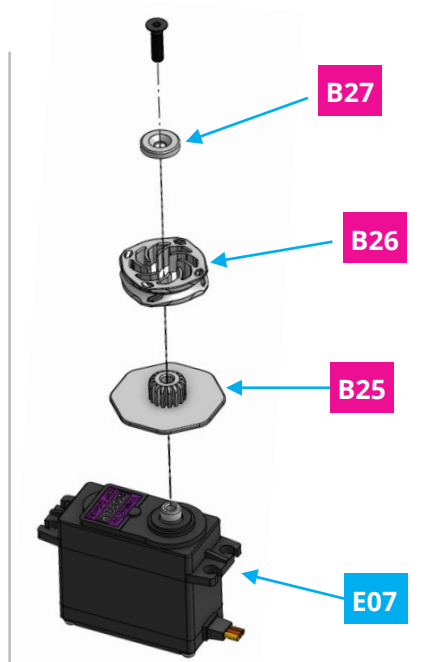
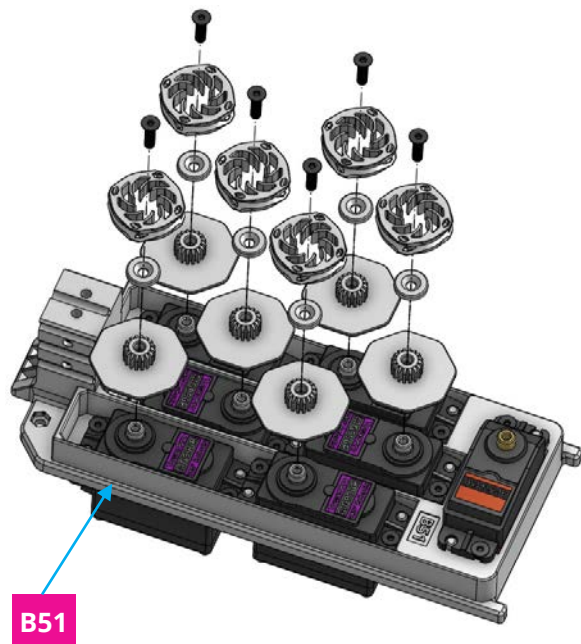
Counter clockwise (CCW)



## Step 10c

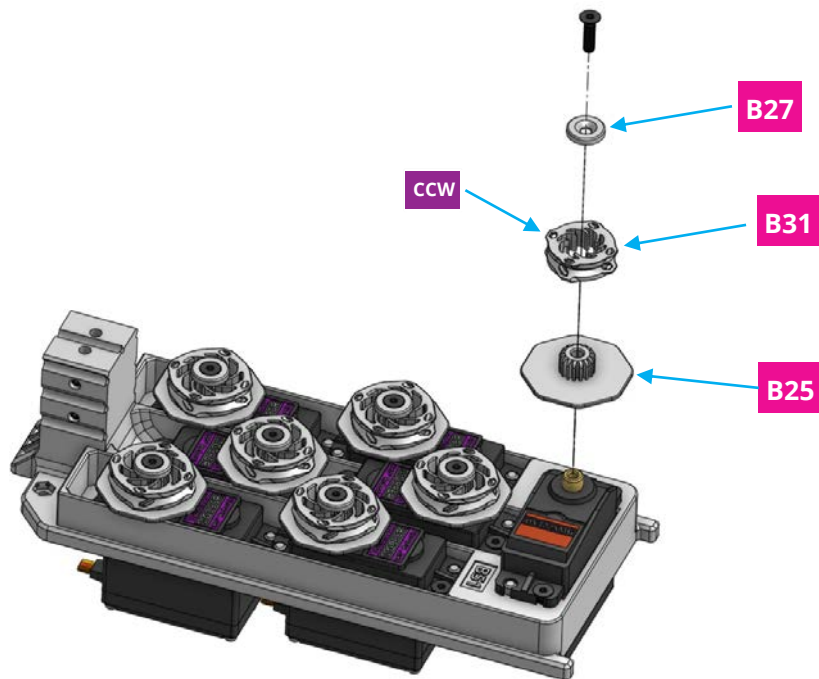


Assemble wire connectors using the shown arrangement by using **6 x B25**, **B26**, **B27** and **6x M3 12mm screws**. Make sure **B26** orientation matches the shown one the right picture.



## Step 10d

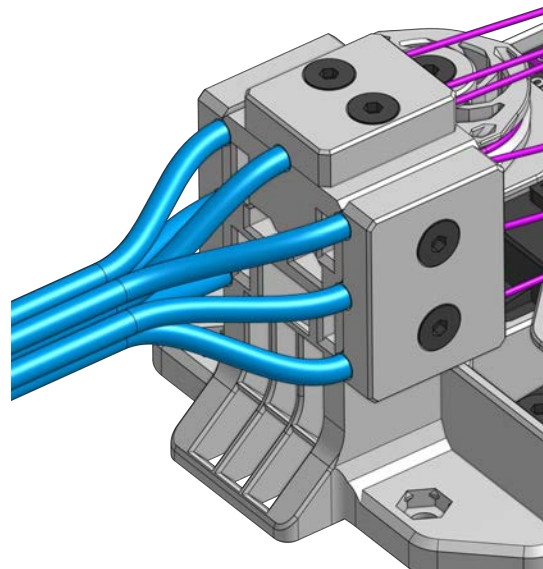
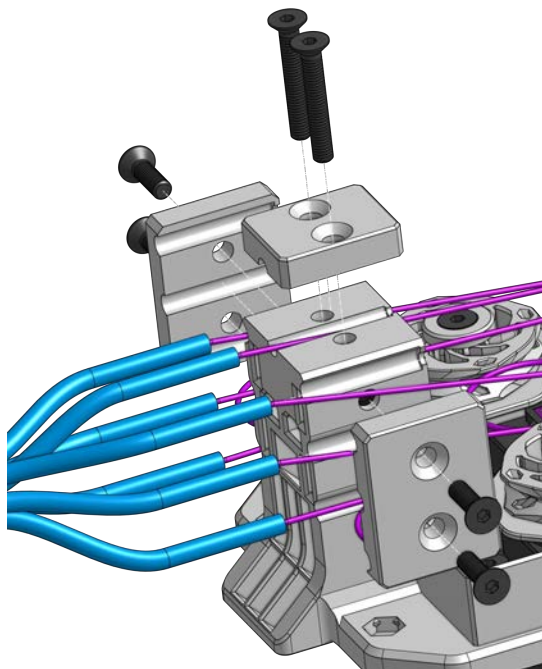
Assemble wire connectors using the shown arrangement by using **B25**, **B31**, **B27** and **1x M3 12mm screw**. Make sure **B31** is switched to counterclockwise orientation.



## Step 10e

Insert the **teflon tubes** from forearm through the shown spots and use **2 x B52, 1 x B53** and **2 x 20 mm** screws **and 4 x 10 mm** to fix them.

(Tipp: Wrap 2 x pieces of tape around each end of the tube before fixing them to have better grip.)

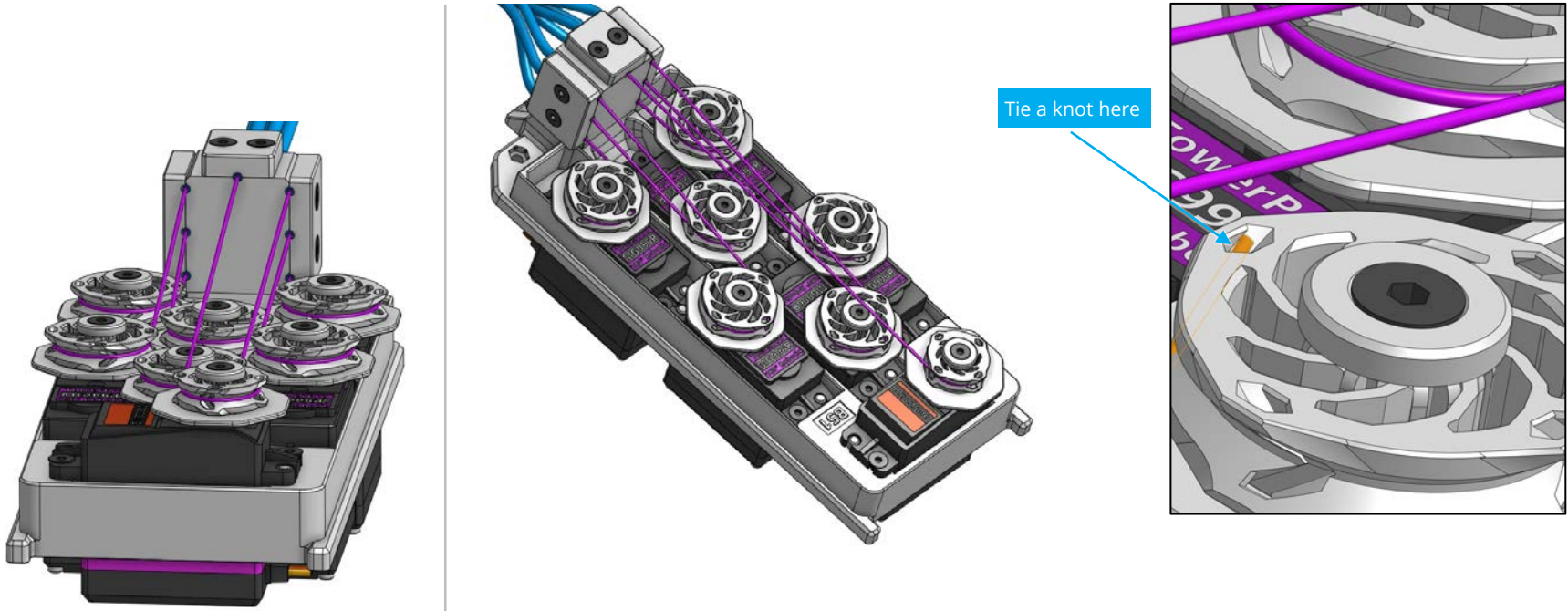




## Step 10f



Insert **fluorocarbon wires** coming out of the **teflon tubes** in shown holes of the **B26** and **B31** connectors and tight a knot at the end to fix them. Wires and tubes will be hidden in following slides.



## Step 11

Slide servo array into ribcage and fix it using **1 x M3 nut** and **1 x M3 16mm screw**.



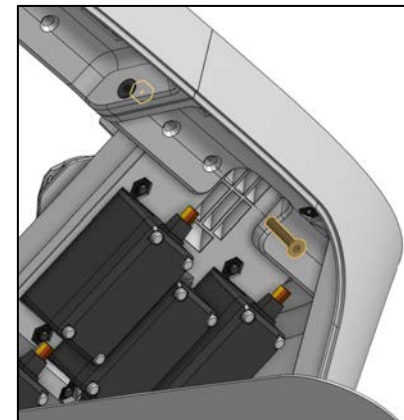
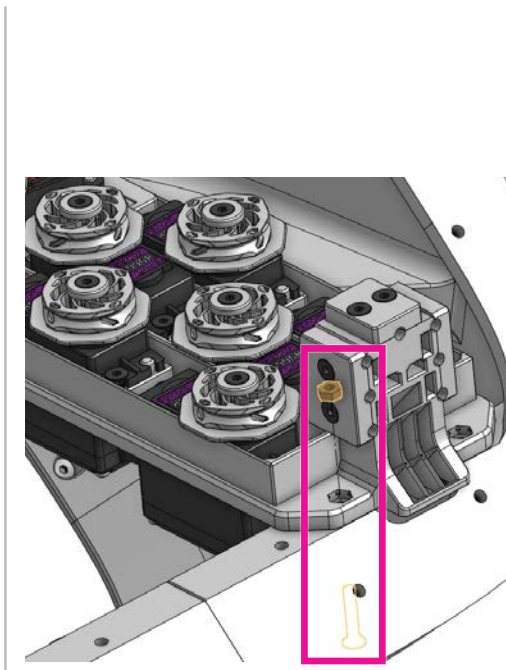
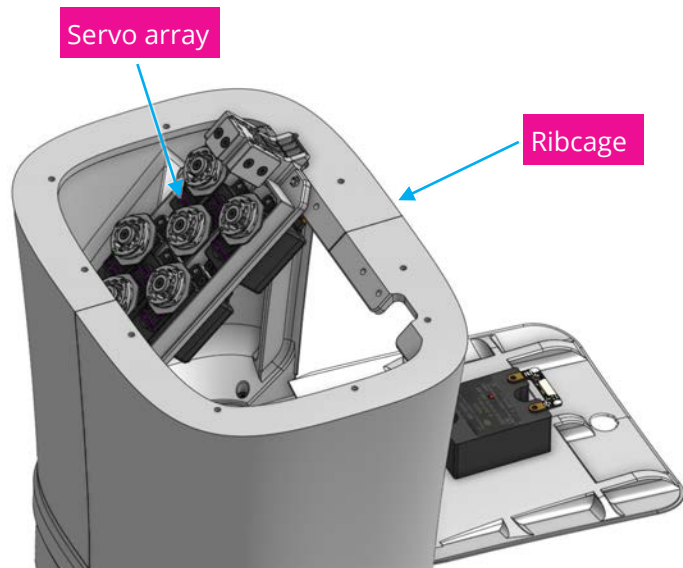
2



1x

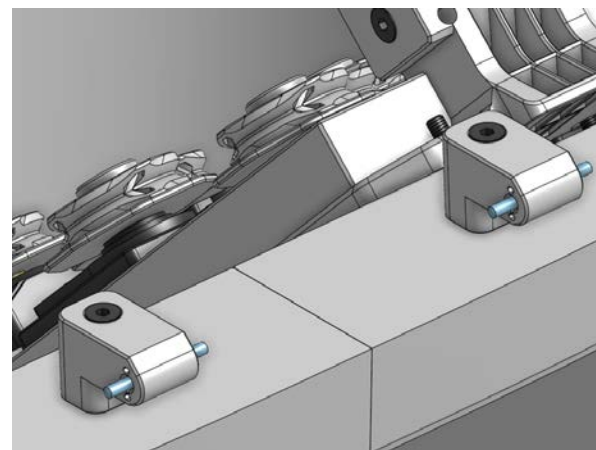
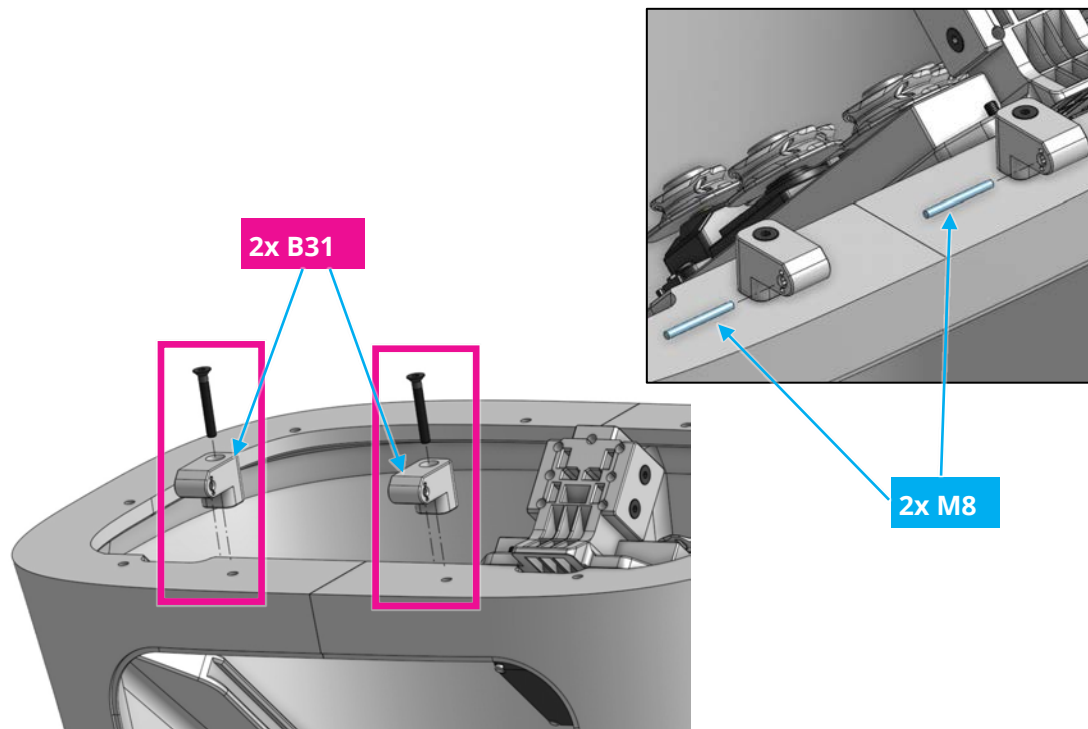


1x



## Step 12a

Assemble **2 x B48** to assembly using **2 x M3 22mm screws** and insert **2 x M08**.

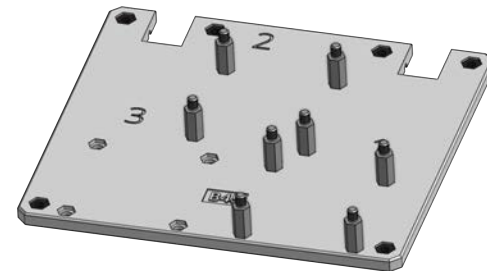
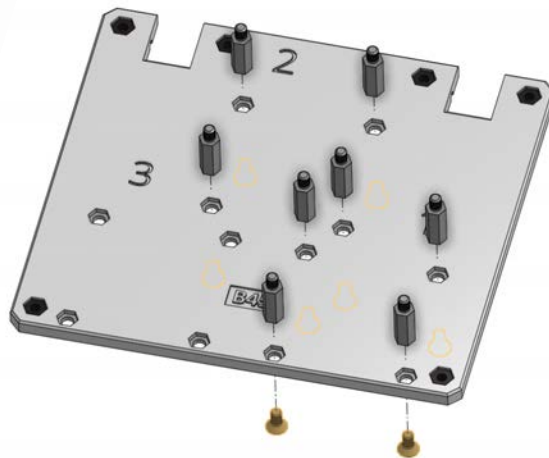
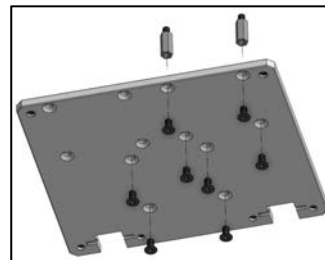
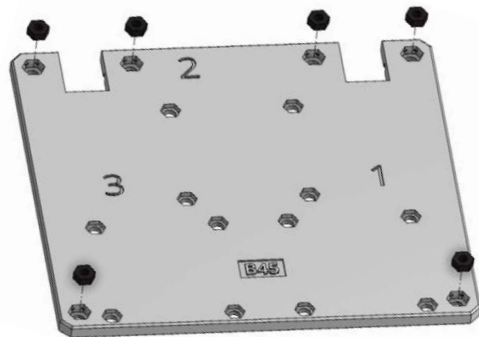


## Step 12b

 2



Insert **6 x M3 nuts** and **8 x M13 distancers** in **B45**. Fix the distancers using **8 x M3 6mm screws**.

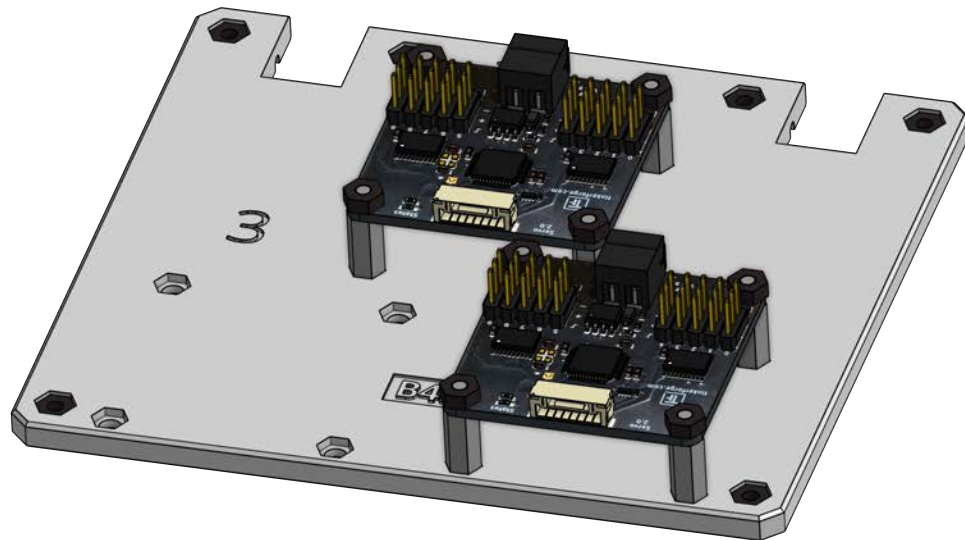
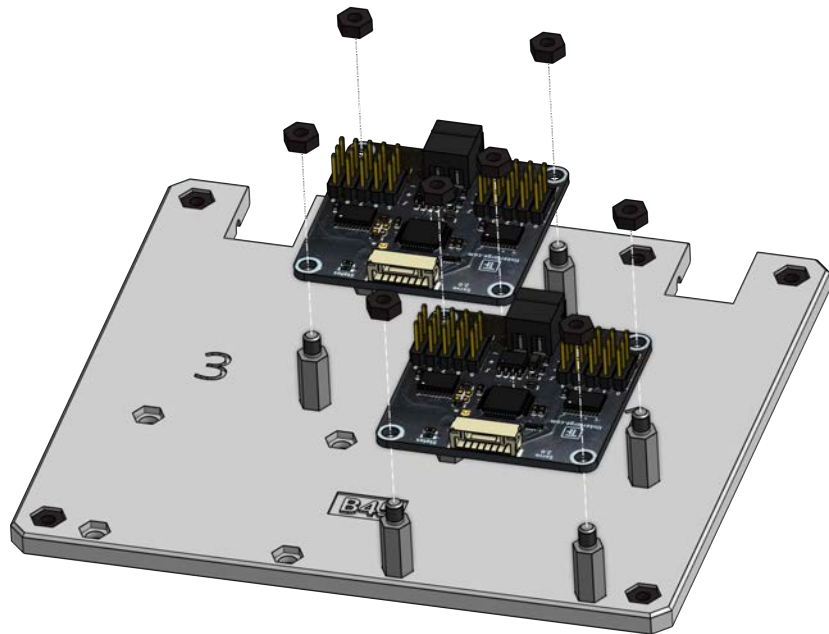


## Step 12c

Connect **2 x E03** to the assembly and fix them using **8 x M3 nuts**.



8x



## Step 12d

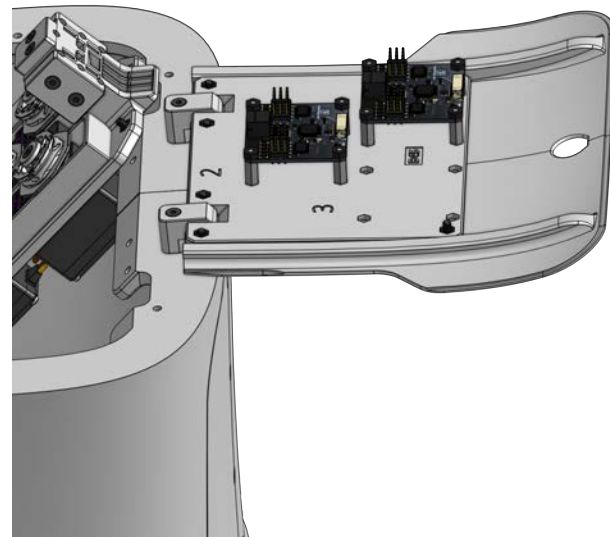
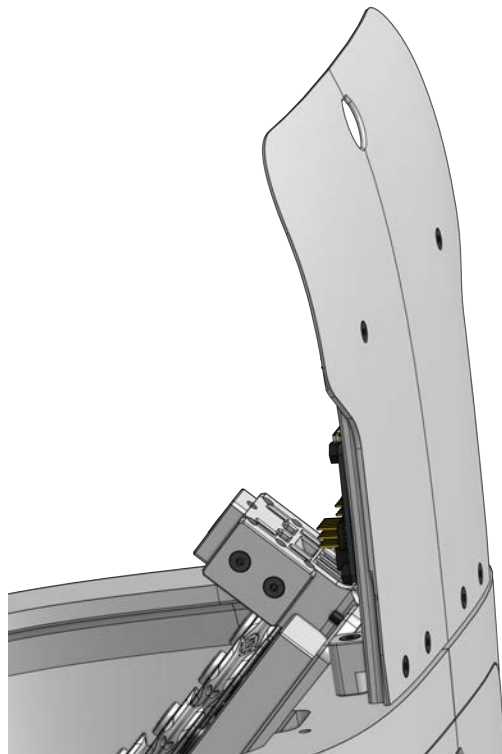
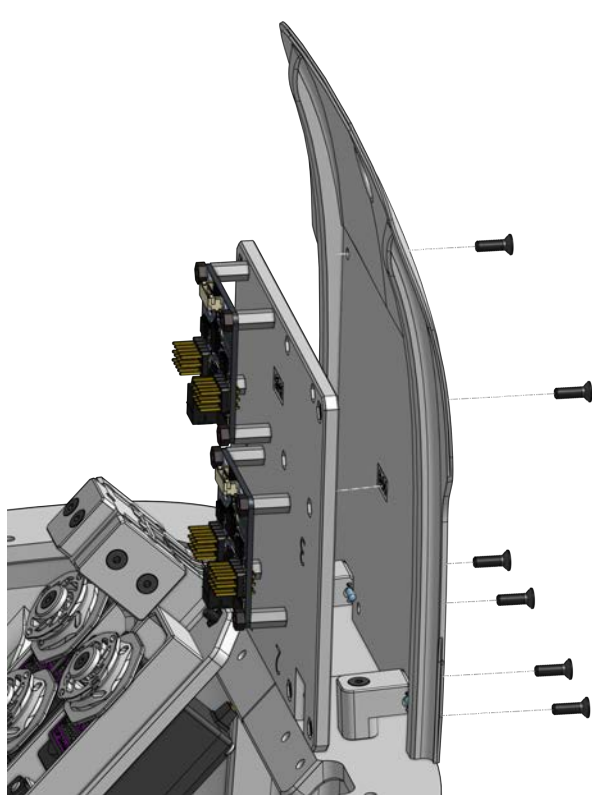
Connect **B44** to **B45** using 6 x M3 10mm screws.



2



10x

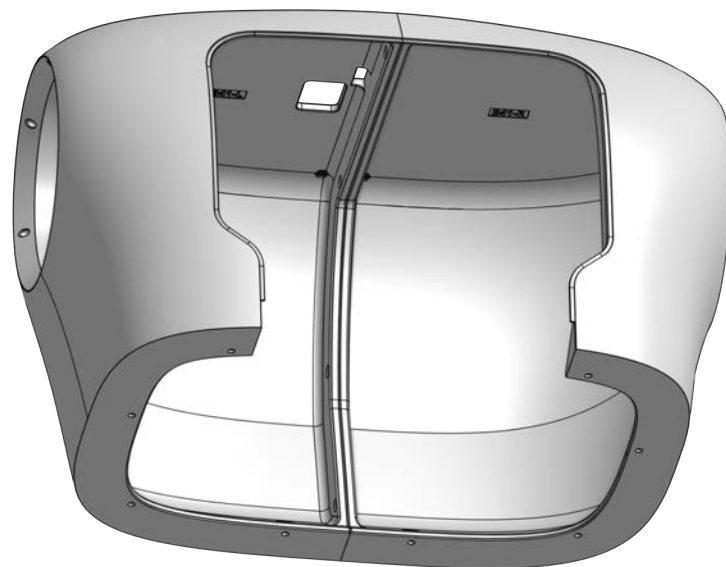
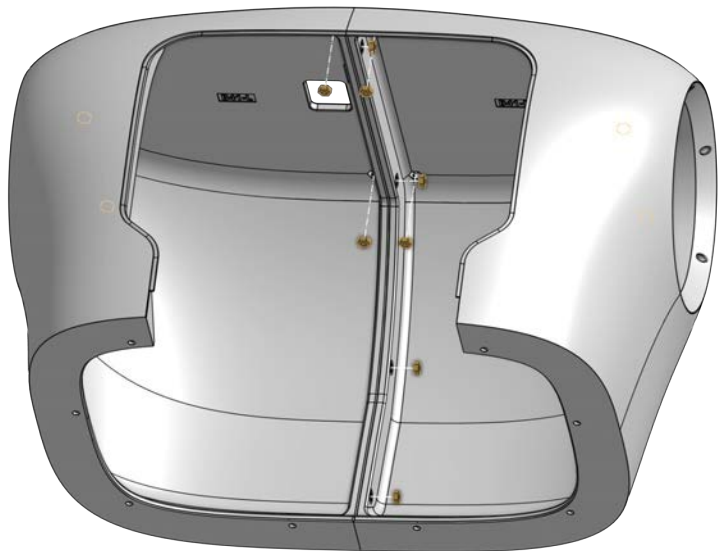


Step 13a

Insert **12 x M3 nuts** into **B41-L** and **B41-R**.

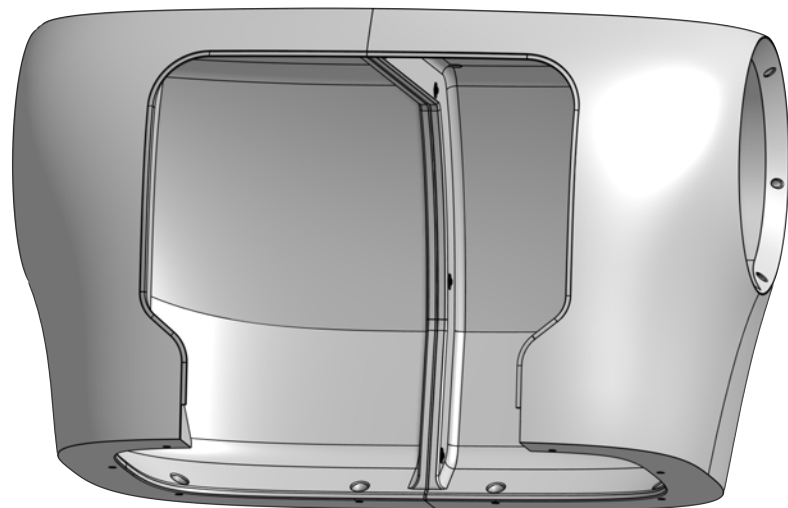
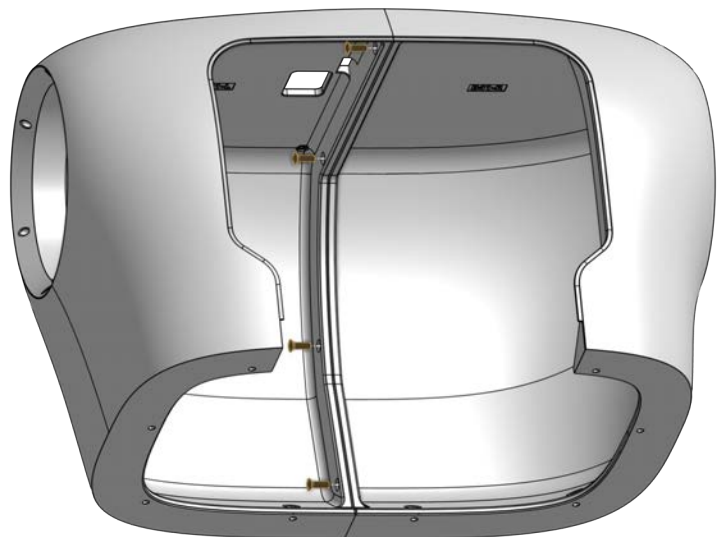


12x



## Step 13b

Connect **B41-L** to **B41-R** using 4 x **M3 10mm** screws.





## Step 13c

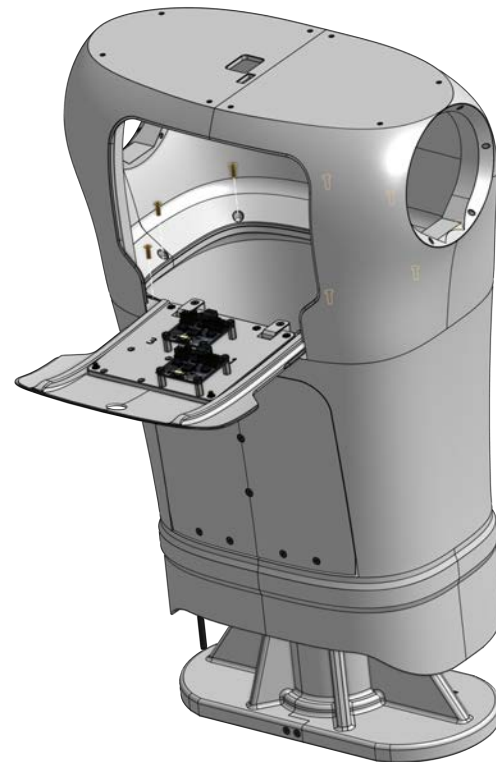
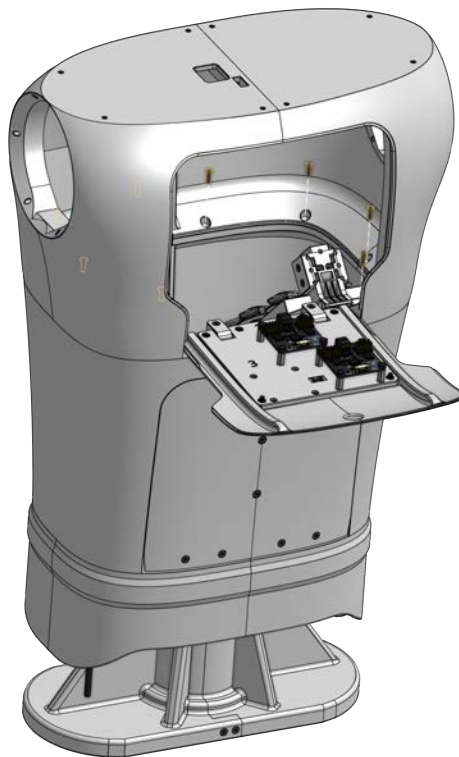
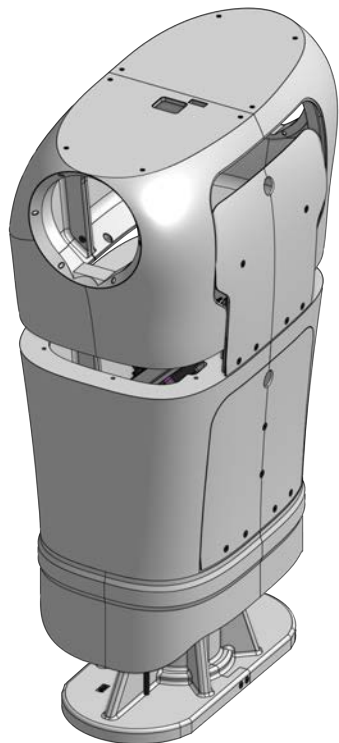
Connect **Clavicles** to **assembly** using 8 x **M3 10mm** screws.



2



8x

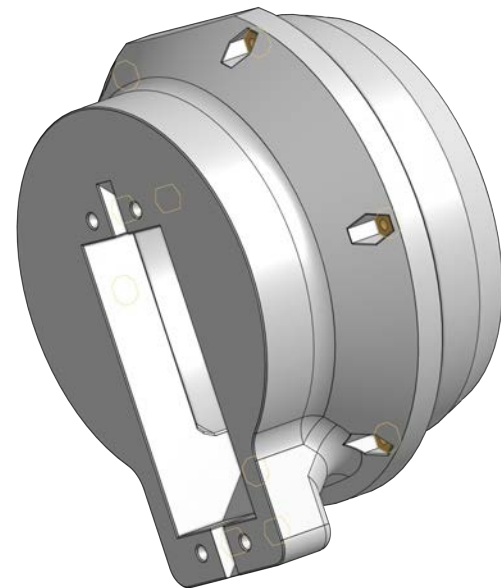
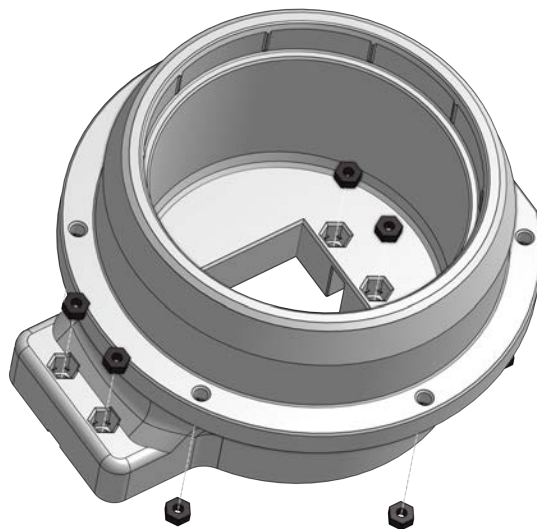
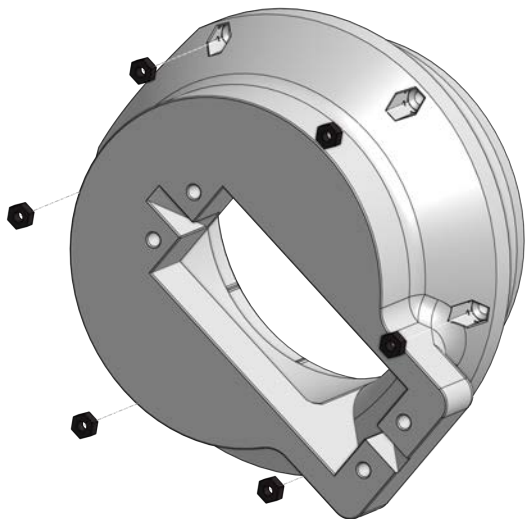


Step 14a

Insert 12 x **M3** nuts in **C61**.



10x

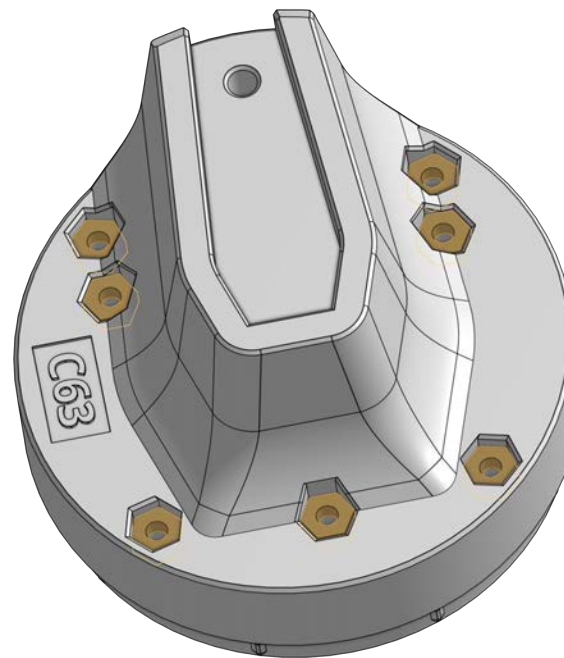
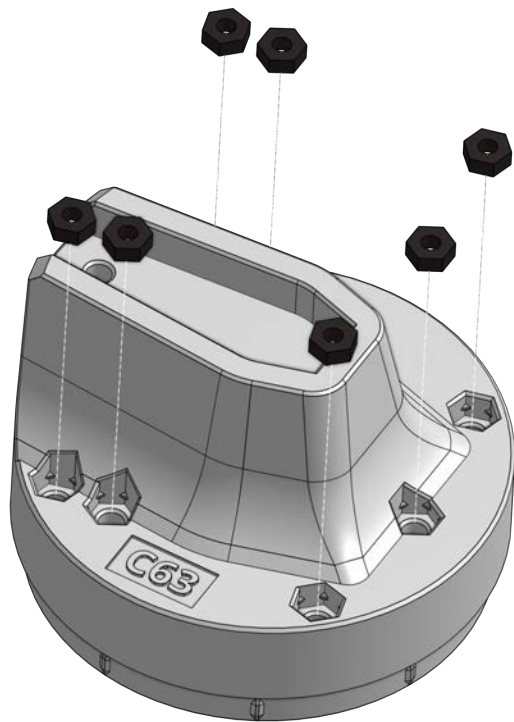


## Step 14b

Insert **7 x M3 nuts** in **C63**.

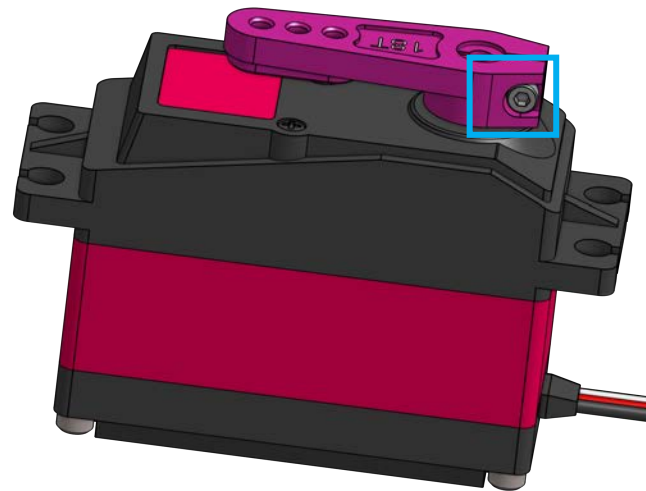
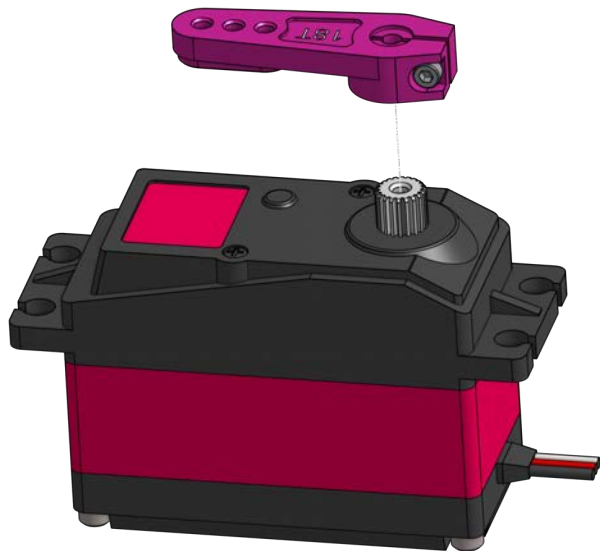


7x



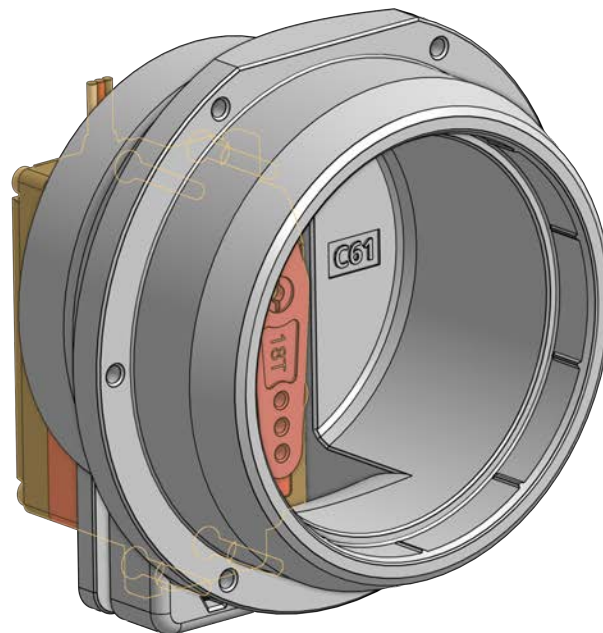
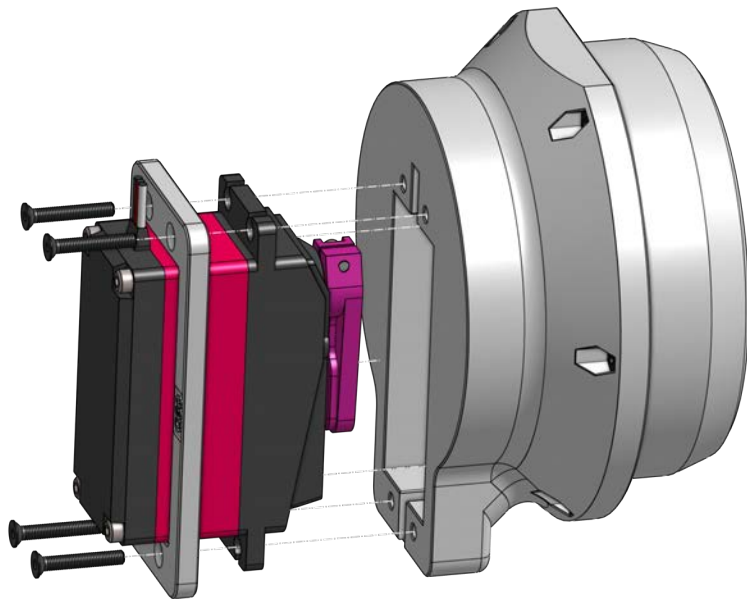
## Step 15a

Attach **M17** to **E15** and tighten the connection using the shown screw.



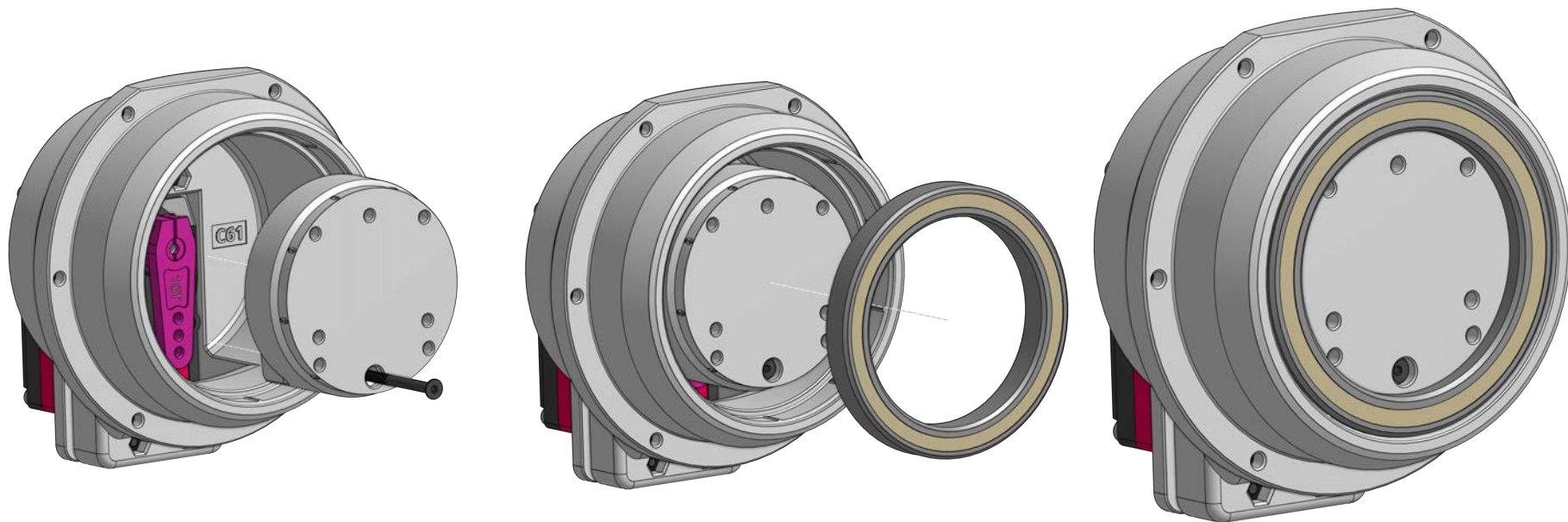
## Step 15b

Attach **E15** to **C61** using **C60** and **4 x M3 20mm** screws.



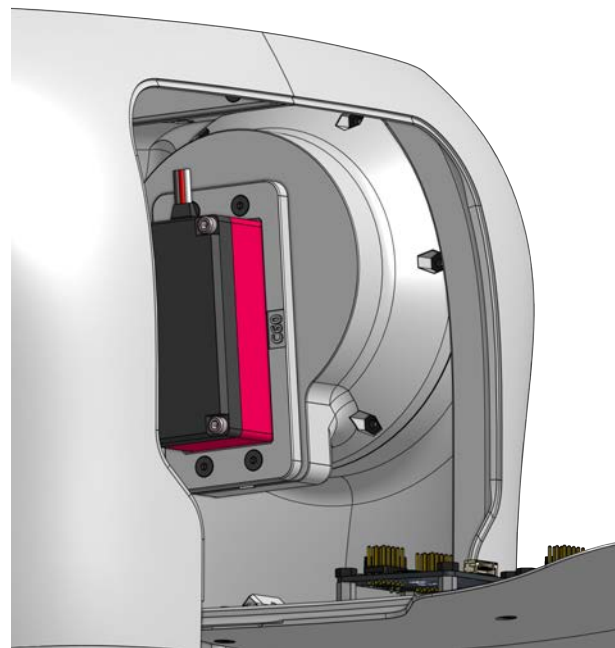
## Step 15c

Attach **C63** to assembly using **1 x M3 40mm** screw and place **1 x M04** ballbearing on top.



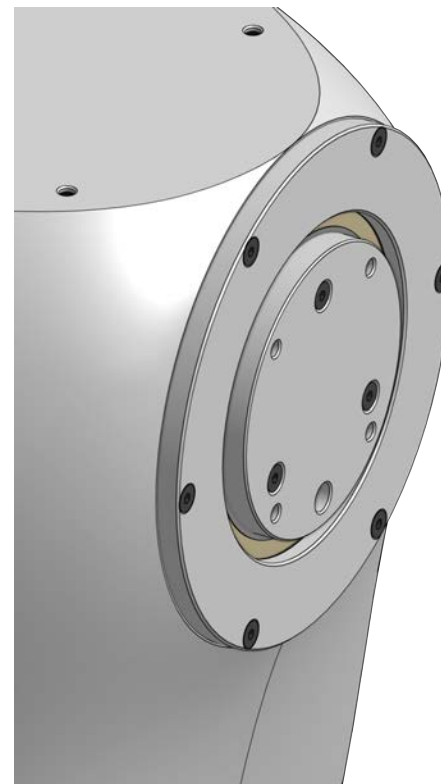
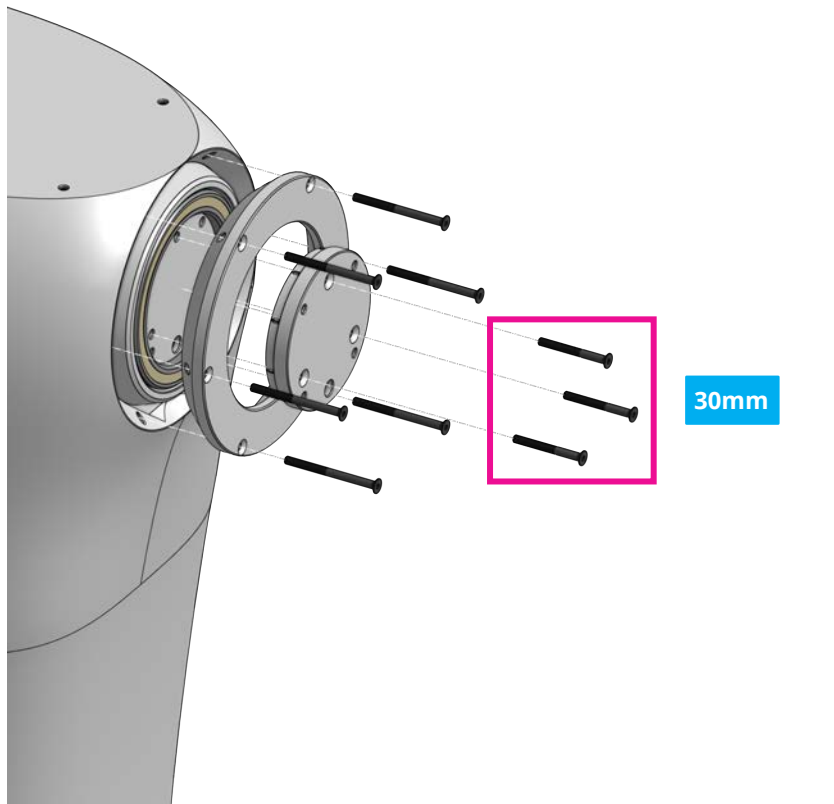
## Step 16a

Place assembly into clavicles like shown in the pictures.



## Step 16b

Fix the shoulder using **C62** and **C64** with **6 x M3 40mm** screws and **3 x M3 30mm** screws.



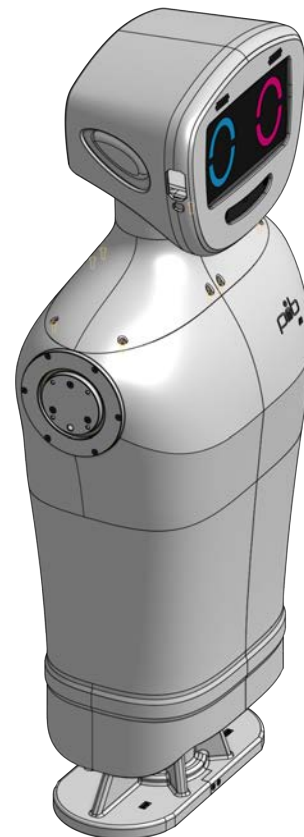
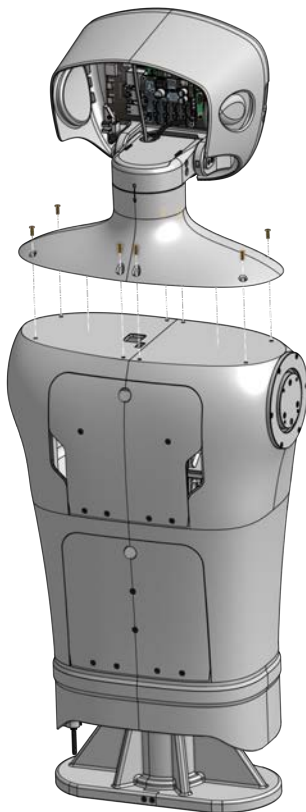


## Step 17

Assemble neck and head to upperbody using **8 x M3 10mm screws**.



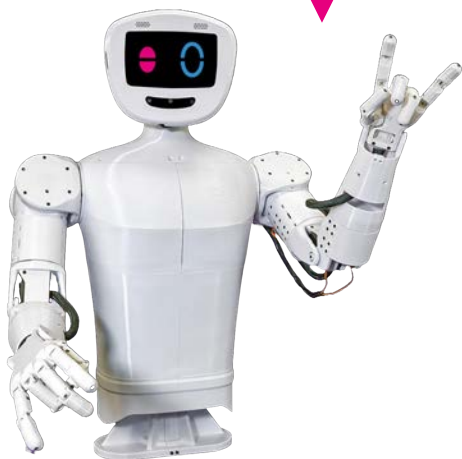
8x



## Congratulations

You did a great job, piib´s upper body is assembled!

**Well done!**



## Do you need support?

Or do you need our pib.Box with all non-printable parts?

Or maybe you have some new ideas and improvements?

Please contact us.



**team@pib.rocks**

Send us an email.



**discord.com/invite/GRdpyeDu7P**

Join us on Discord.



**shop.pib.rocks**

Order non-printable parts for pib.