



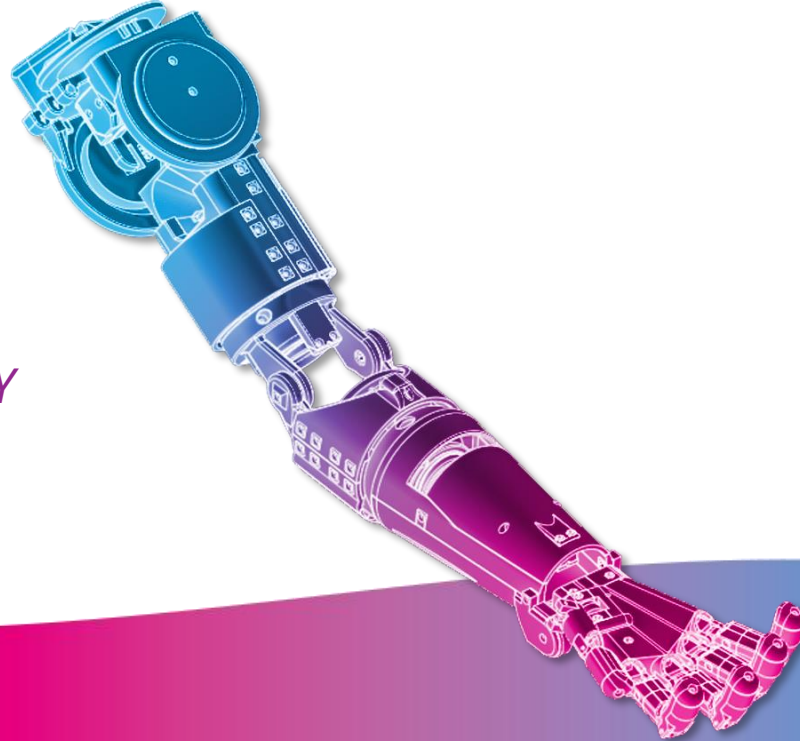
How to build your robot

[www.pib.rocks/build](http://www.pib.rocks/build)



assembly instructions for:

*Hand and arm ASSEMBLY*



You  
Print  
Build  
Develop

*your own robot!*

## Printable parts



In order to assemble the hand to pib's arm you will at least need to build the fingers, hand and forearm first.

You can find all our tutorials on [pib.rocks/build](https://pib.rocks/build)

### Tutorials on [pib.rocks](https://pib.rocks)

[https://pib.rocks/build/how-to-build-pibs-\*\*finger\*\*/](https://pib.rocks/build/how-to-build-pibs-finger/)

[https://pib.rocks/build/how-to-build-pibs-\*\*hand\*\*/](https://pib.rocks/build/how-to-build-pibs-hand/)

[https://pib.rocks/build/how-to-build-pibs-\*\*forearm\*\*/](https://pib.rocks/build/how-to-build-pibs-forearm/)

### Printable parts

2 x **C50**-Wrist\_joint\_connector

## Non-printable parts



You will also need the following non-printable parts from our pib.Box Master.

If you do not have it yet, you can buy in our shop  
<https://shop.pib.rocks>.

### Non-printable parts

2 x **S01** M3 nuts

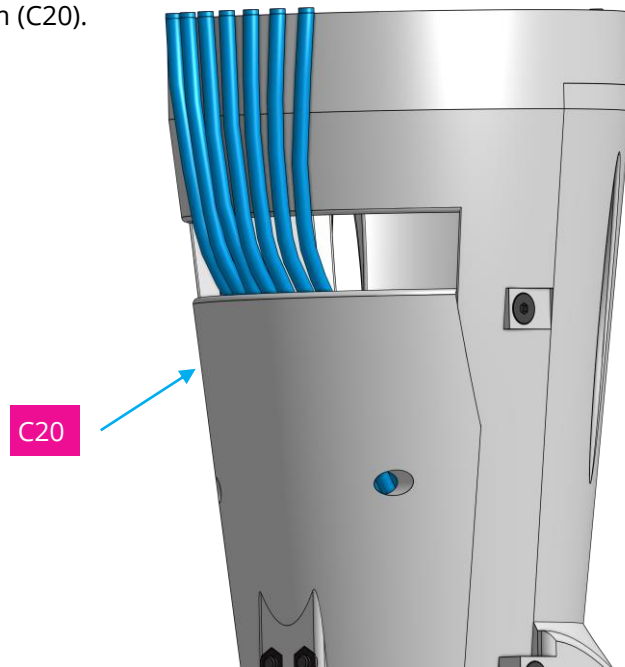
1 x **M08** metal rod

2 x **S09** 22 mm screws

## Step 1



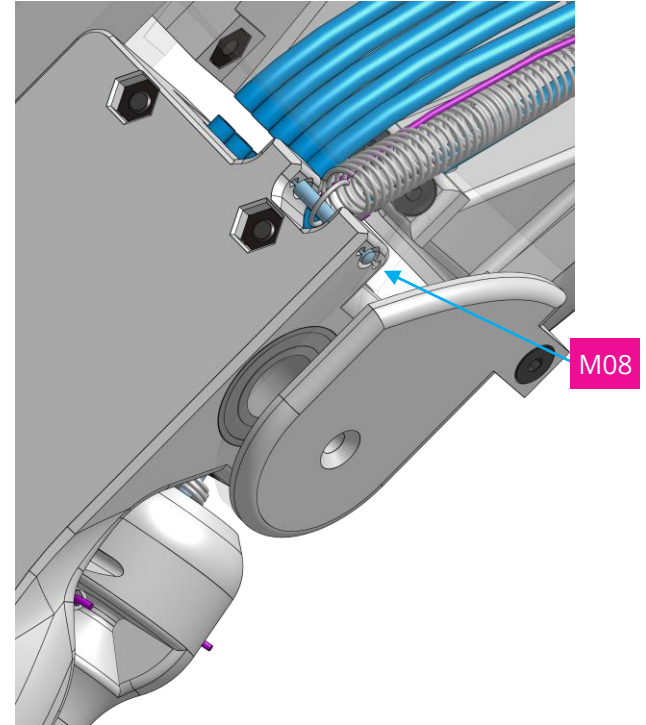
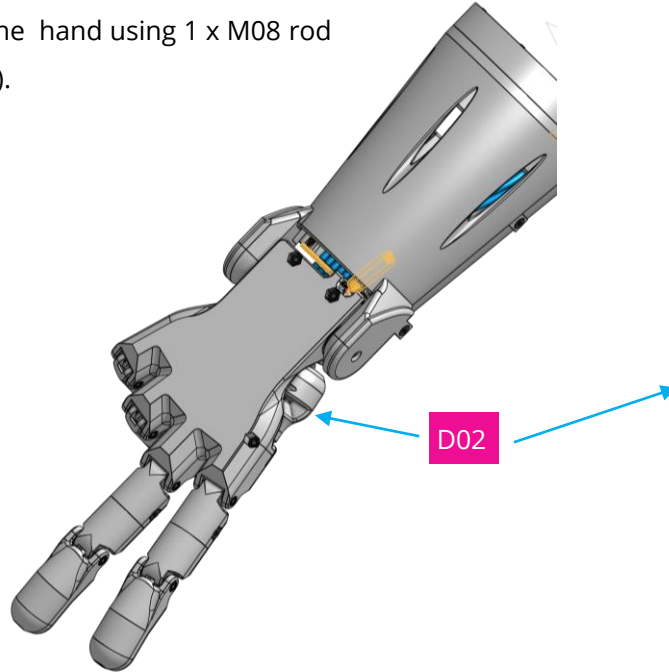
Guide the tubes coming out of the hand through the shown part of the forearm (C20).



## Step 2



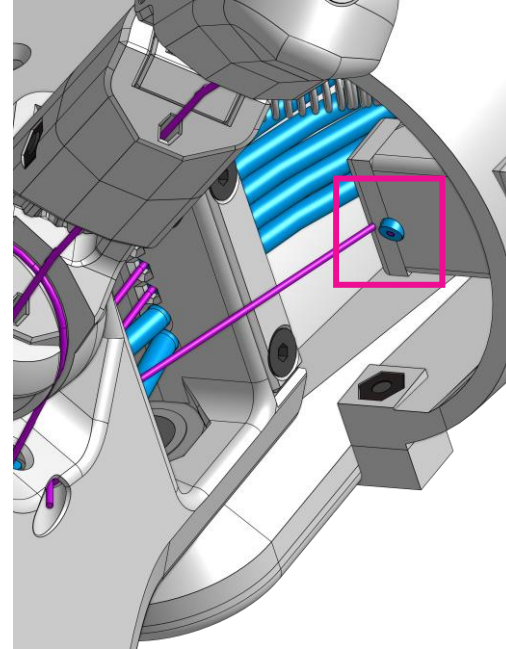
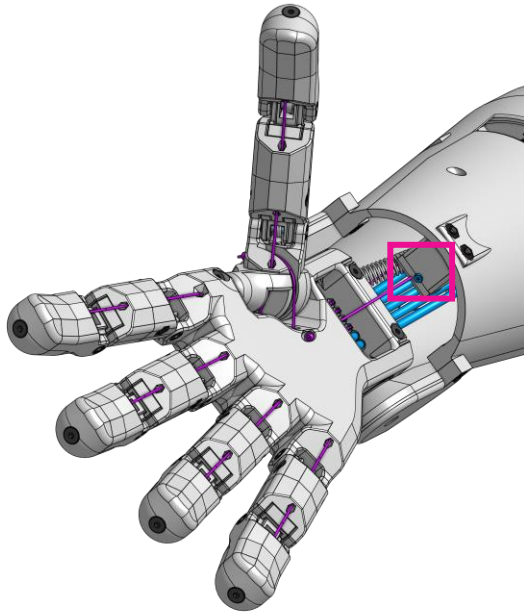
Attach the spring in the forearm to the hand using 1 x M08 rod (C19 hidden in last picture for clarity).



## Step 3



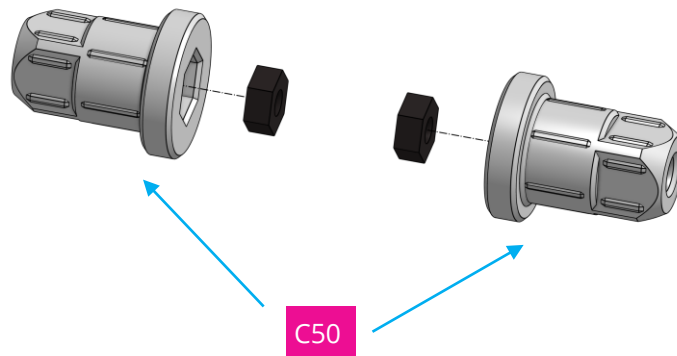
Insert the loose fluorocarbon string (for wrist motion) coming out of hand into the teflon tube fixed in forearm.



## Step 4a



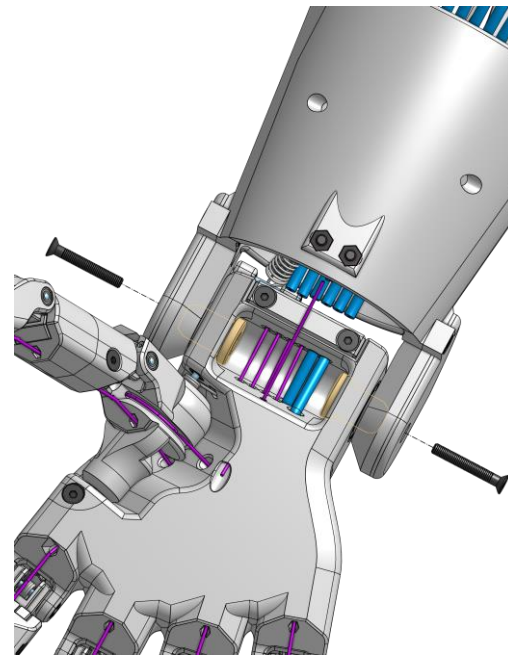
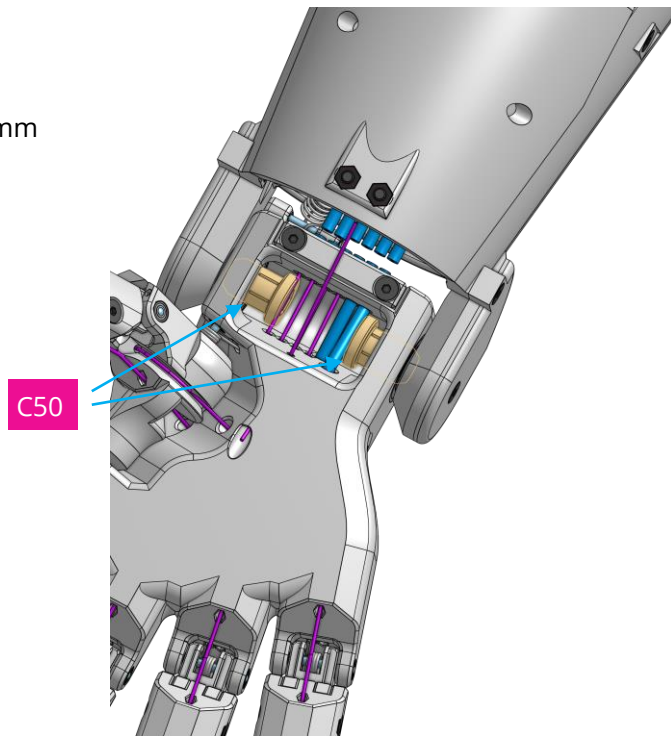
Insert 2 x nuts in 2 x C50.



## Step 4b



Use both C50 to connect hand and forearm and fix them using 2 x 22mm screws.

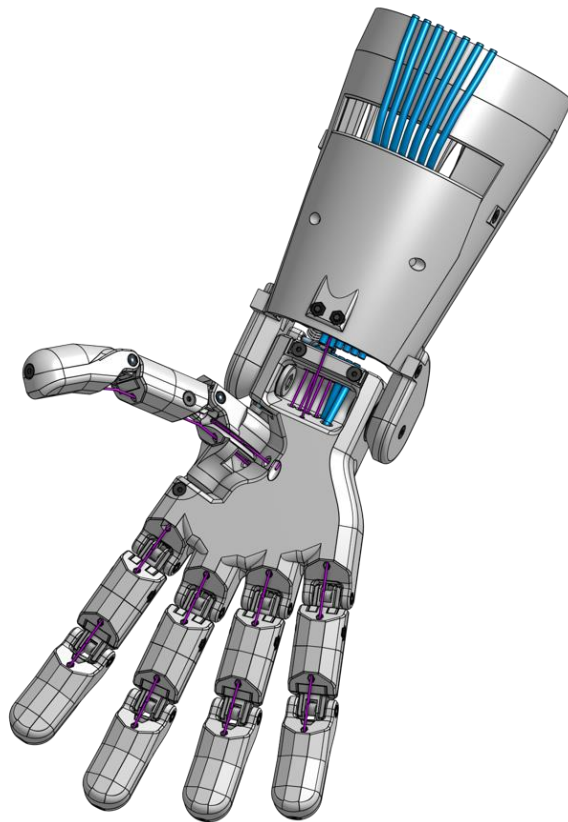




## Congratulations



You did a great job. Pib's hand is assembled to pib's arm.



## Do you need support?



Or do you need our pib.Box with all non-printable parts?

Or maybe you have some new ideas and improvements?

Please contact us.



**team@pib.rocks**

Send us an email.



**discord.com/invite/GRdpyeDu7P**

Join us on Discord.



**shop.pib.rocks**

Order non-printable parts for pib.