



How to build your robot

www.pib.rocks/build



assembly instructions for:

NECK

Version: pro



You
Print
Build
Develop

your own robot!

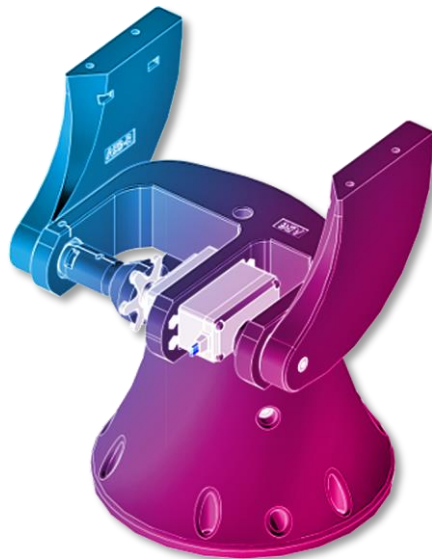
Neck variations of pib



Pib's neck has 3 variations:

- Rookie: simple with 1 degree of freedom (left and right movement)
- **Pro: intermediate with 2 degrees of freedom (up and down + left and right movement)**
- and ultimate: advanced with 3 degrees of freedom.

The default one is pro, the intermediate with 2 degrees of freedom. This tutorial describes how to build it.



Printable parts



Pib's neck consists of **12 printable parts** and is assembled in **19 steps**.

In order to construct the neck, you will need to print the parts as seen in the table.

Please note: For better readability we use the abbreviations in the tutorial: A50 instead of A50-Neck_housing.

Printable parts

A50-Neck_housing

A51-Bearing_holder_neck

A52-Motor_bracket_neck

A53-Vertical_shaft_neck

A54-Vertical_motor_connector_neck

A55-Cap_neck

A56-Top_part

A57-Horizontal_motor_connector_neck

A58-Horizontal_shaft_neck

A59-L-Side_arm_neck_left

A59-R-Side_arm_neck_right

A60_Horizontal_shaft_short_neck

Non-printable parts



You will also need the following non-printable parts from our pib.Box Master.

If you do not have it yet, you can buy in our shop

<https://shop.pib.rocks>

Non-printable parts

24 x **S01** M3 nuts

8 x **S04** M3 10 mm screws

20 x **S05** M3 12 mm screws

2 x **S11** M3 30 mm screws

1 x **S13** M3 40 mm screws

4 x **M03** Ballbearings

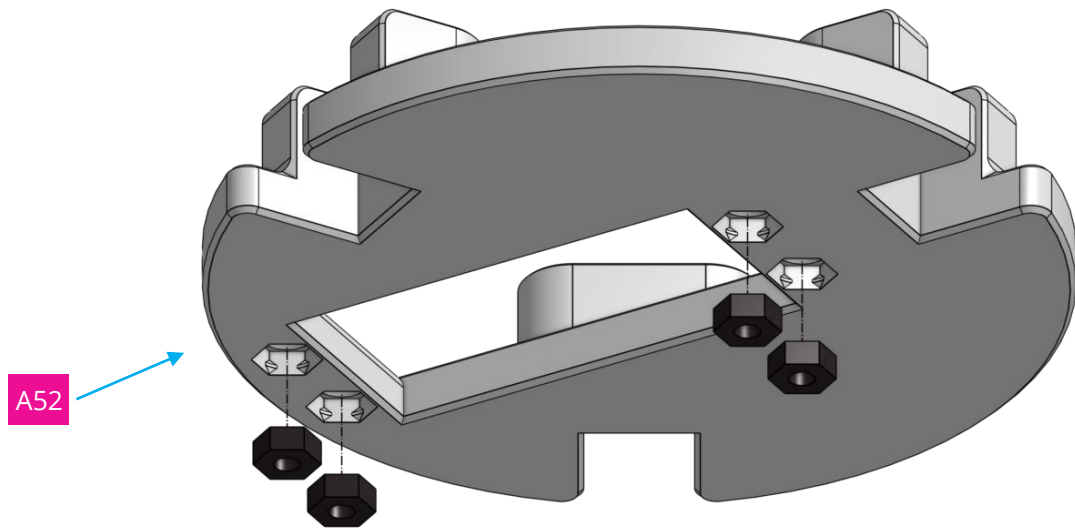
2 x **E07** MG996R servo

2 x **M15** Nylon motor connector

Step 1



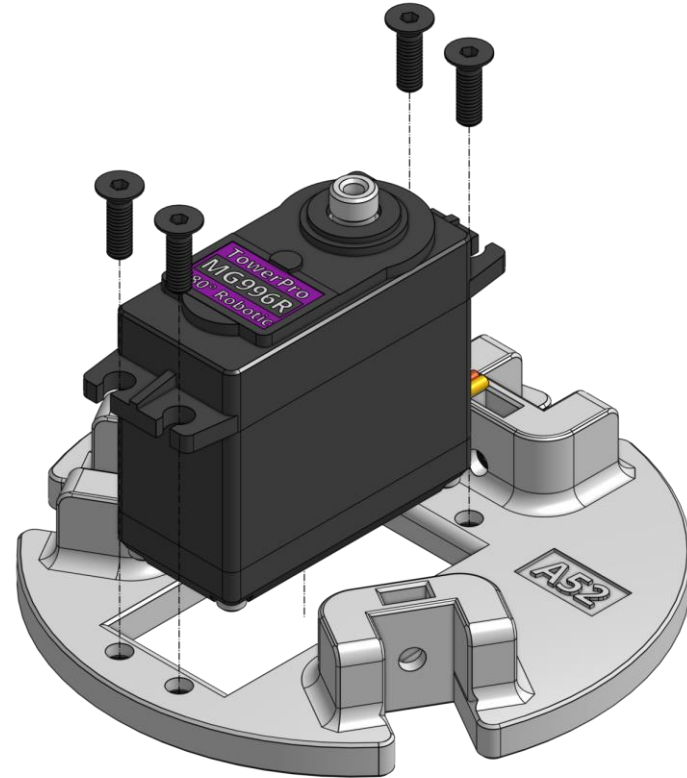
Insert 4 x nuts in A50 in the shown spots.



Step 2



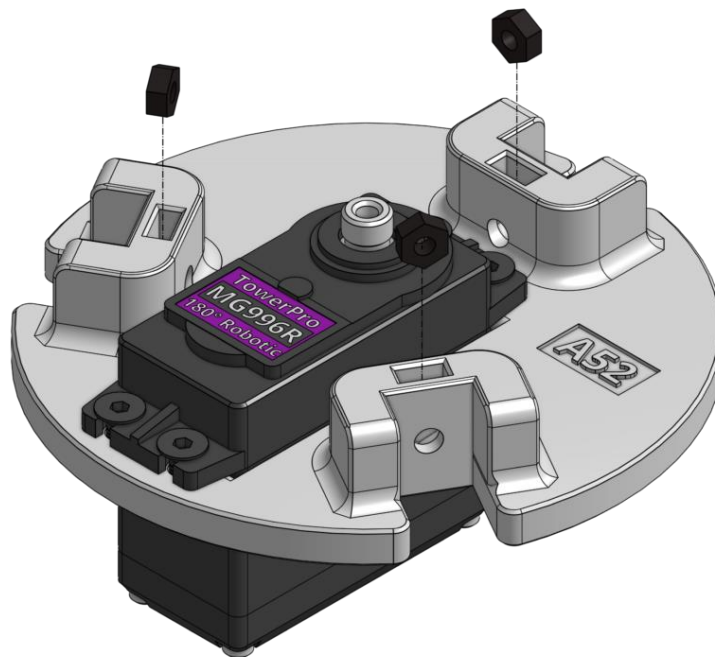
Place one MG996R motor in A52 and use 4 x 10mm screws to fix it.



Step 3



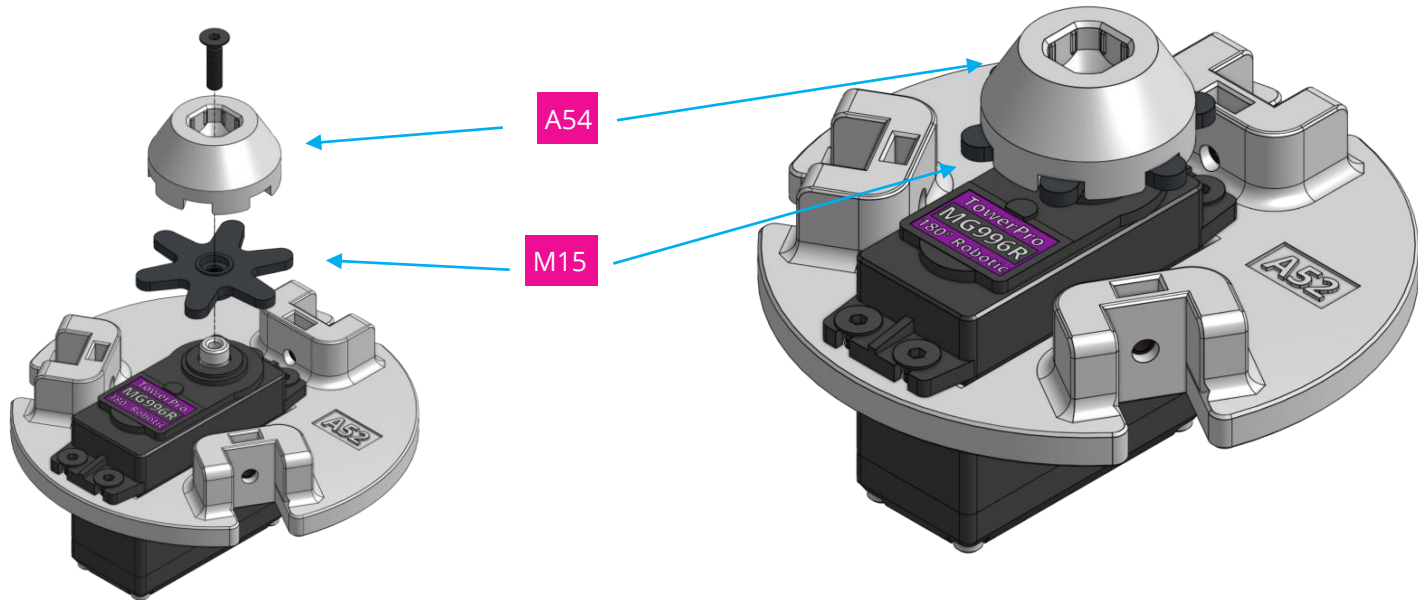
Place 3 x nuts in the shown spots in A52.



Step 4



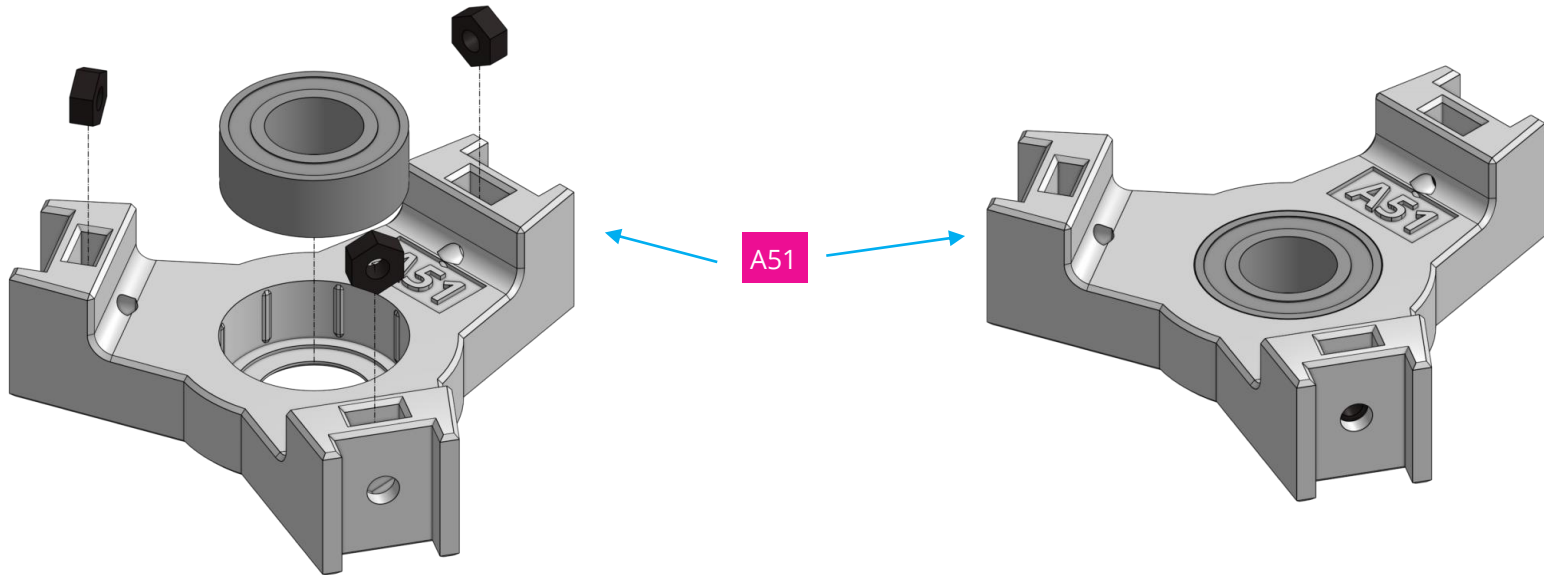
Attach M15 to the motor, then place A54 on top and use 1 x 12mm screw to fix everything together.



Step 5



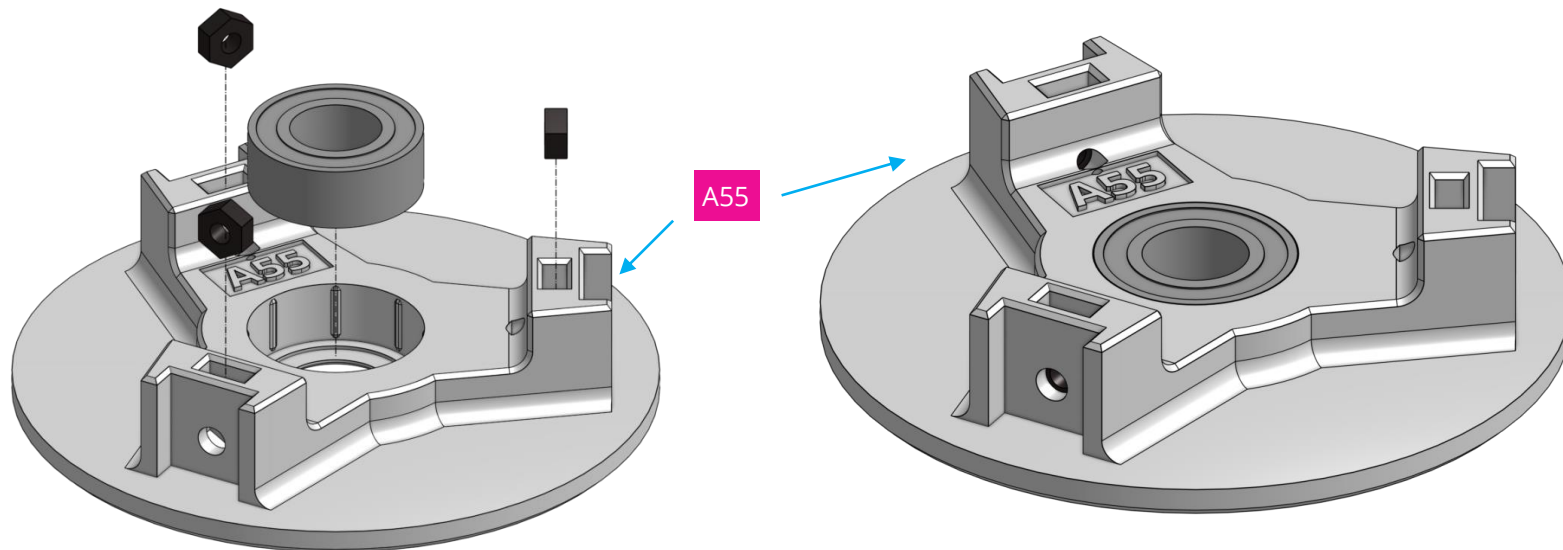
Place 1 x M03 ballbearing and 3 x nuts in the shown spots of A51.



Step 6



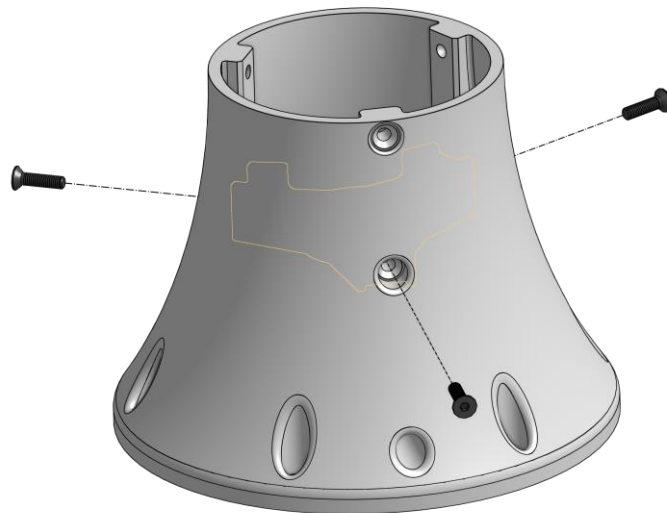
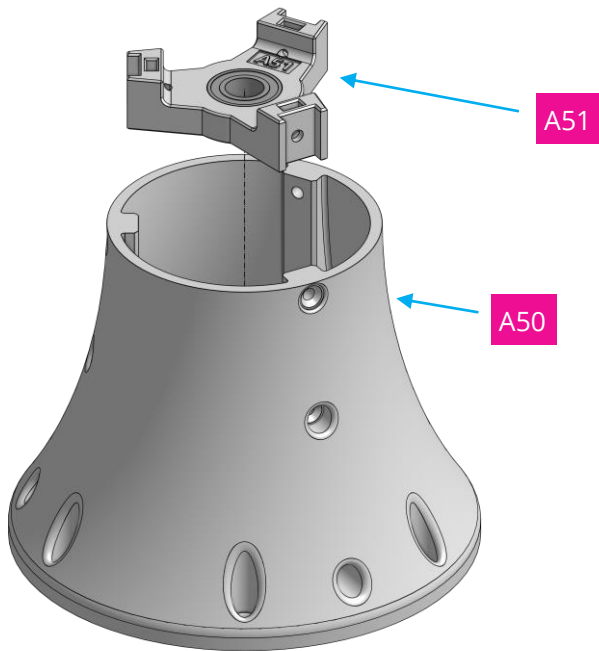
Place 1 x M03 ballbearing and 3 x nuts in the shown spots of A55.



Step 7



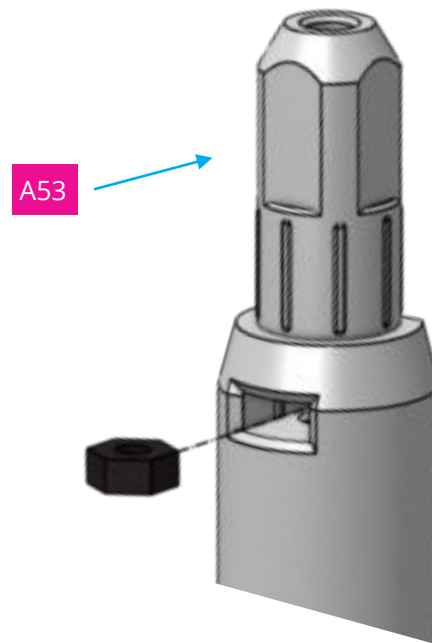
Slide A51 Assembly from step 5 into A50 from the top till it reaches the middle, then fix it with 3 x 12mm screws.



Step 8a



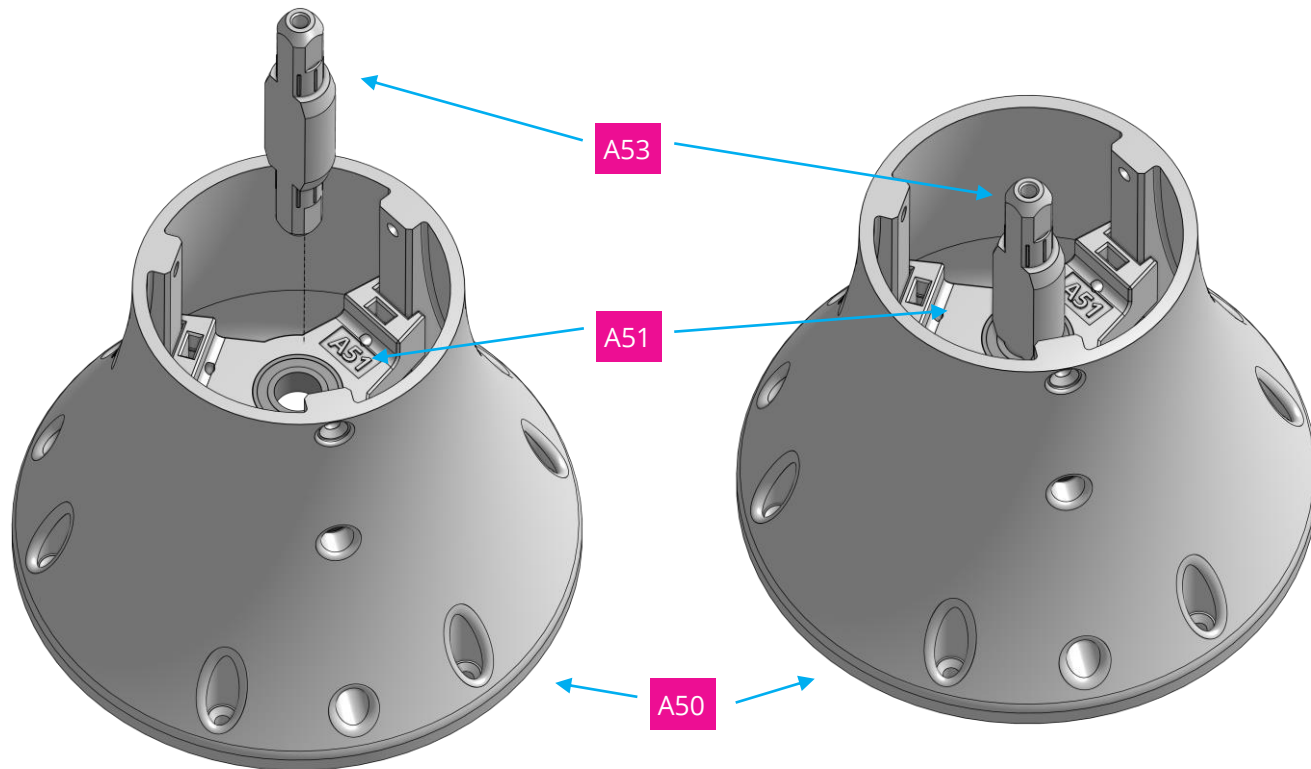
Insert 1 x nut into A53.



Step 8b



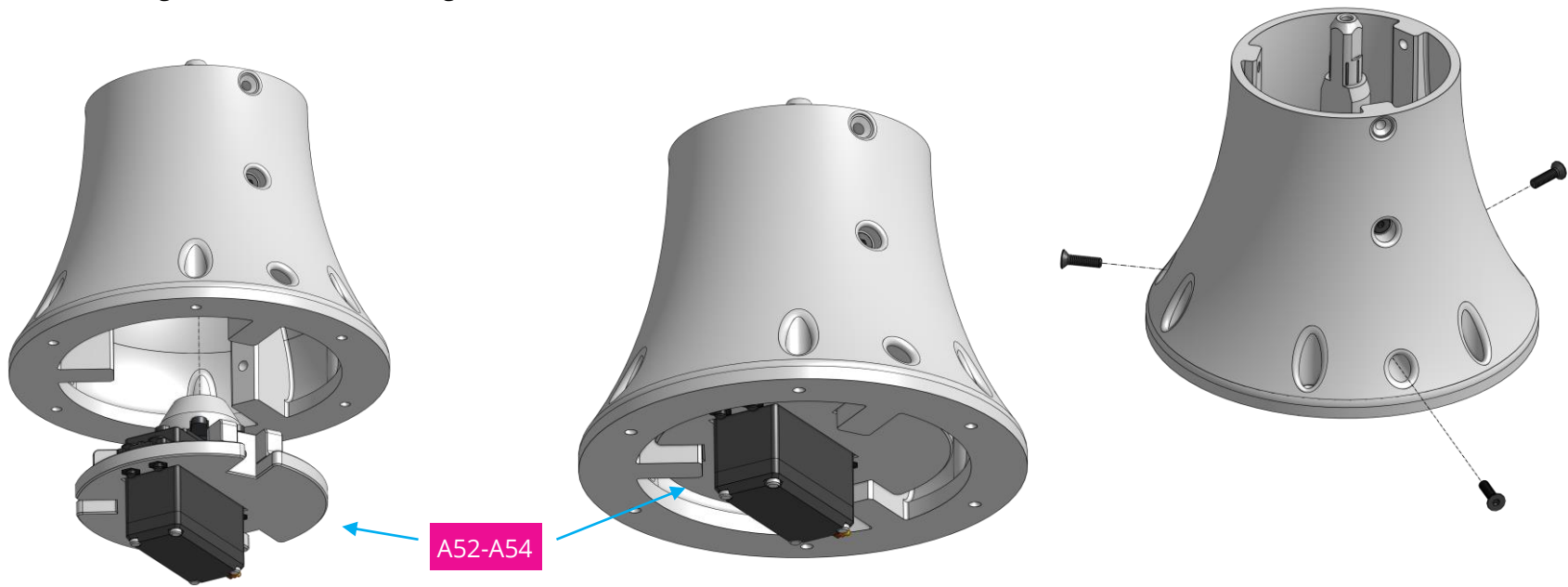
Insert A53 through A51.



Step 9



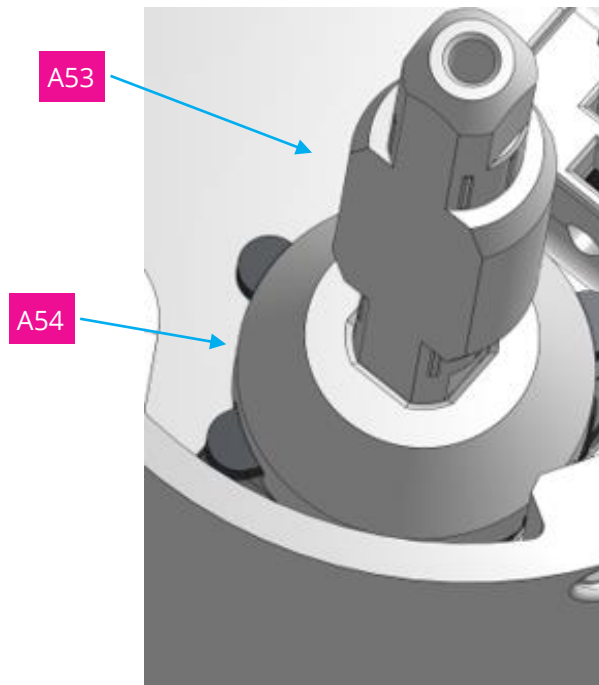
Insert A52-A54 through A51 and fasten it using 3 x 12mm screws.



Step 9 – note



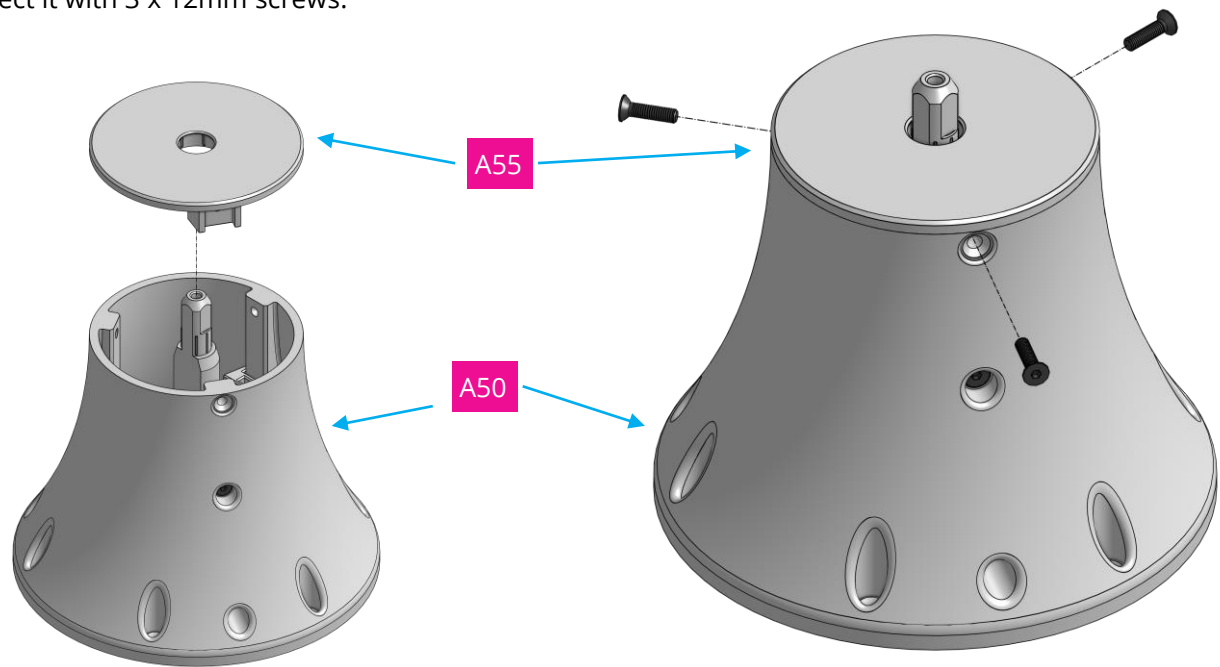
Align A53 with A54 to be connected in a "flush" way (A51 hidden).



Step 10



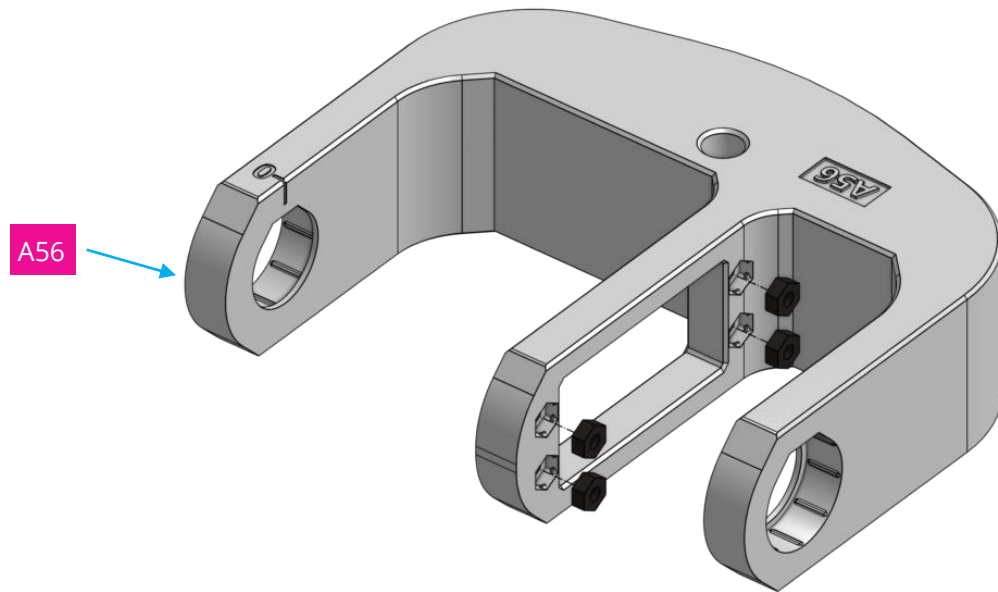
Insert A55 into A50 and connect it with 3 x 12mm screws.



Step 11



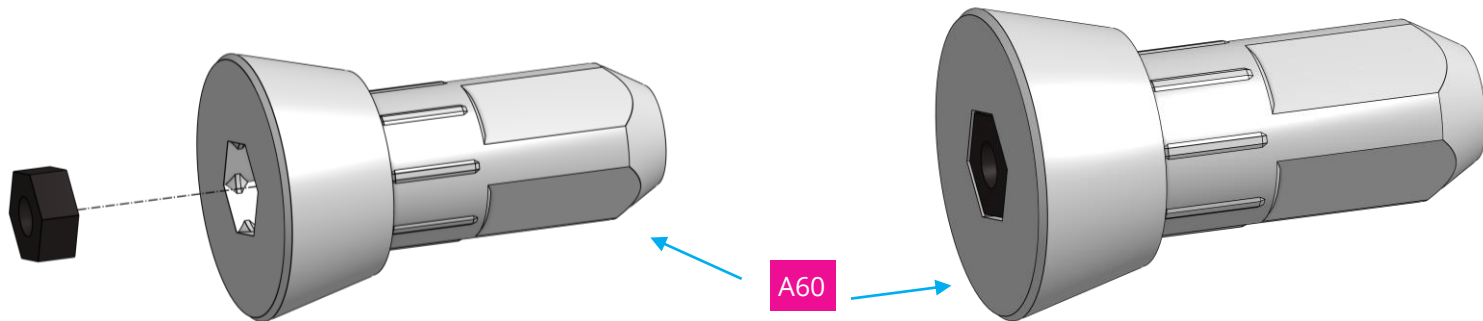
Attach 4 x nuts in A56.



Step 12a



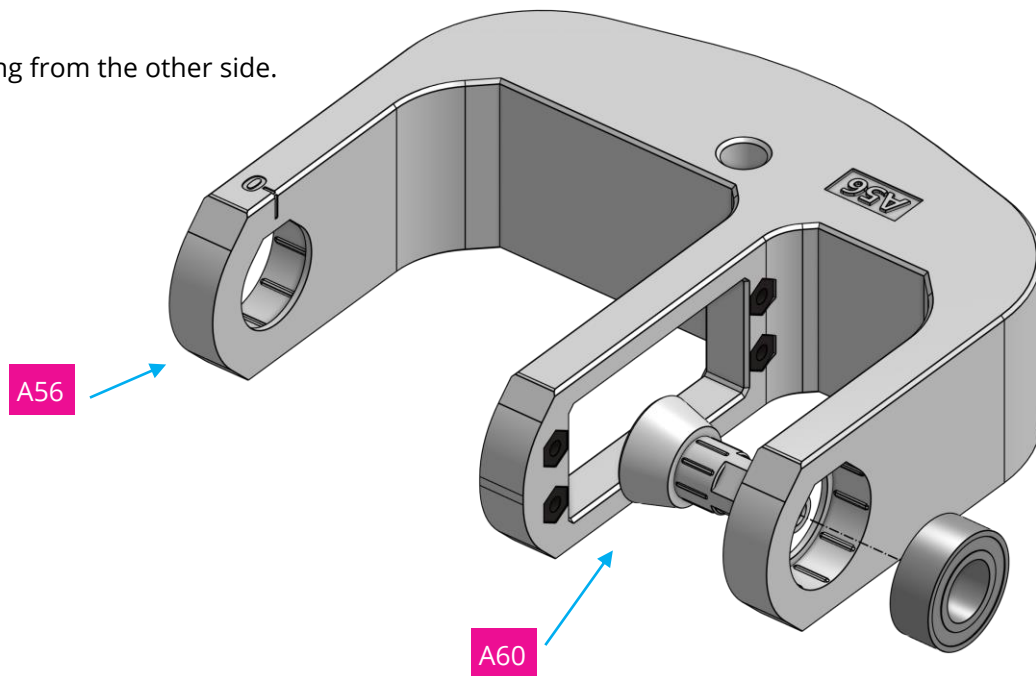
Place 1 x nut A60.



Step 12b



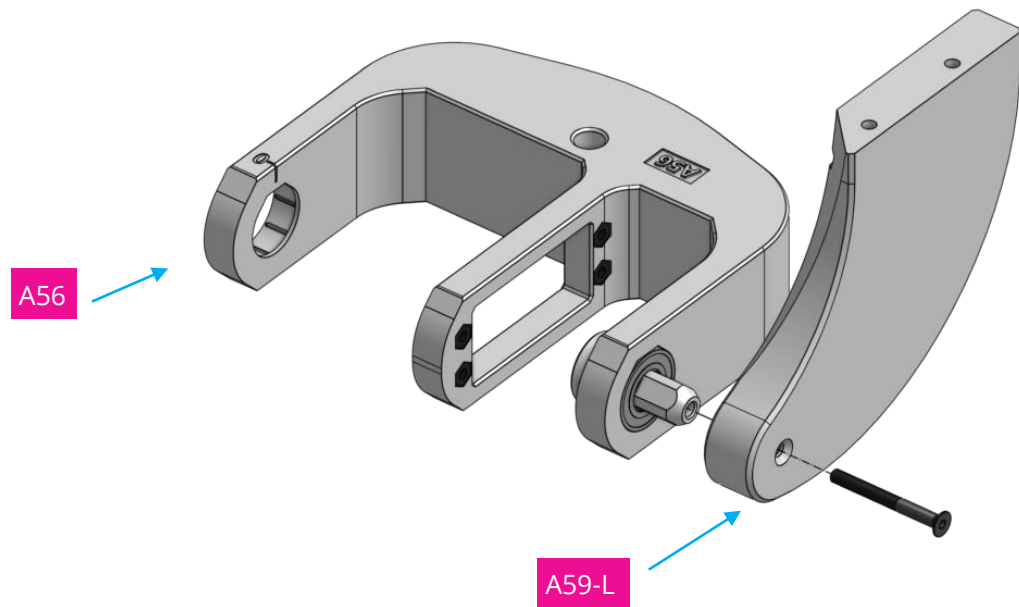
Insert A60 into A56 and put 1 x M03 ballbearing from the other side.



Step 12c



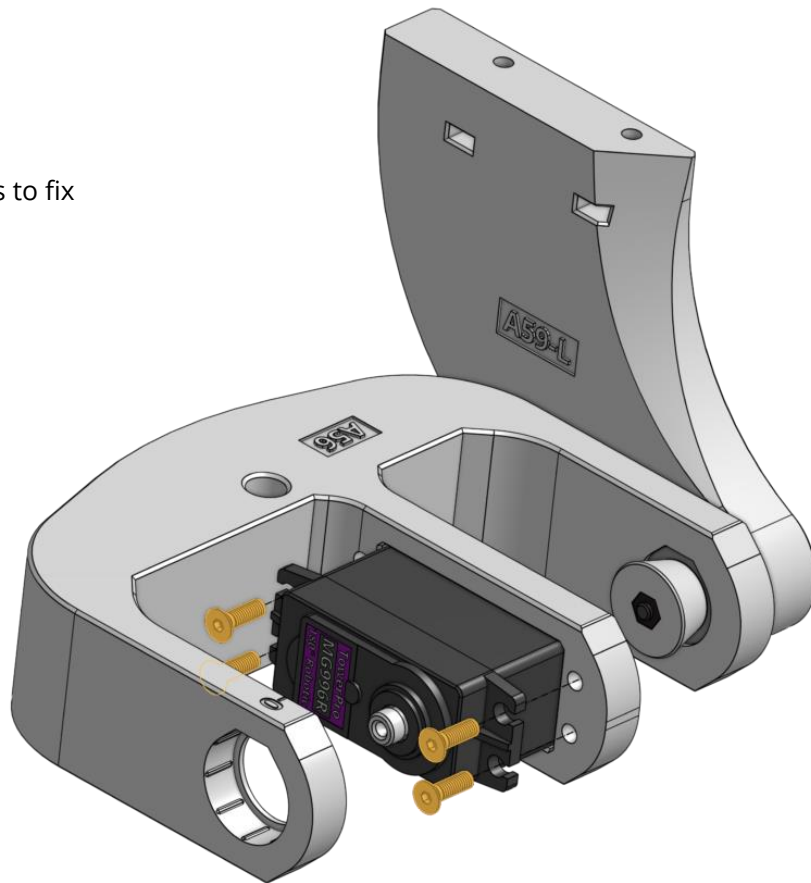
Connect A59-L with A56 using 1 x 30mm screw.



Step 13



Insert MG996R motor in the shown spot and use 4 x 10mm screws to fix onto A56.

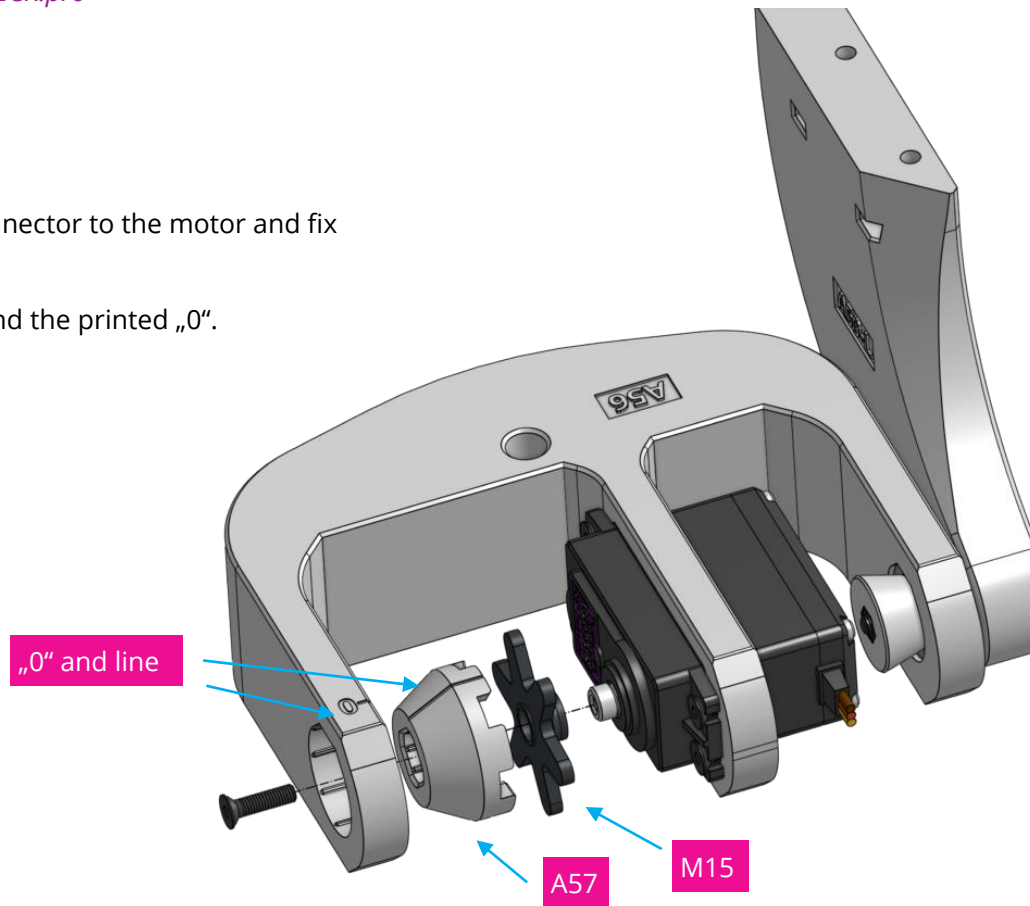


Step 14



Connect A57 and 1 x M15 Nylon motor connector to the motor and fix them using 1 x 12 mm screw.

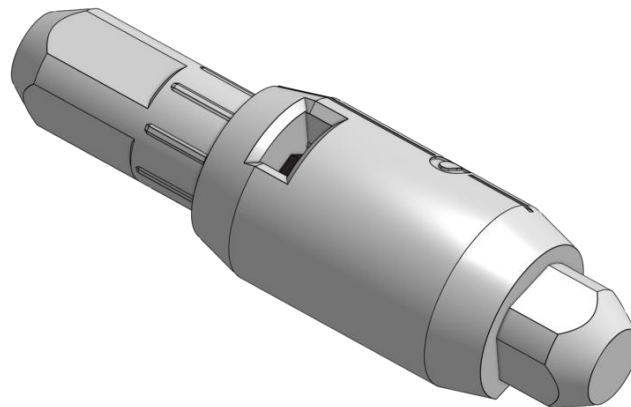
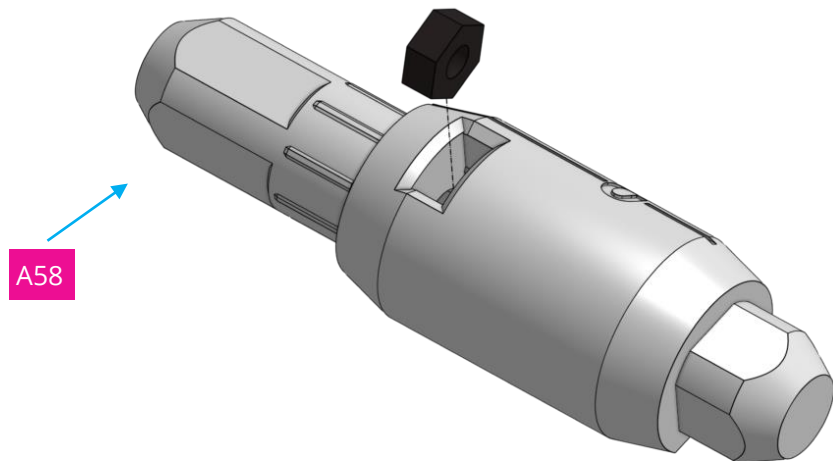
Make sure to line up the highlighted line and the printed „0“.



Step 15a



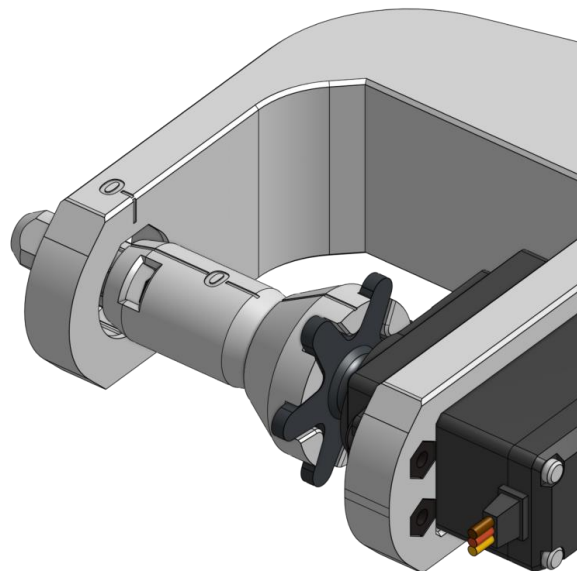
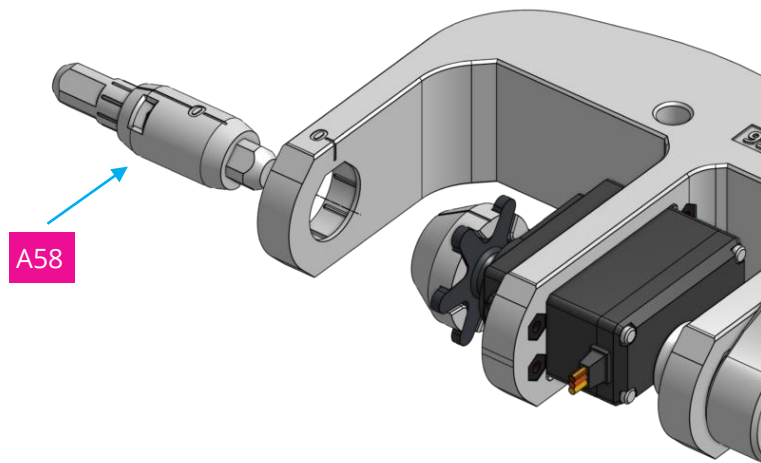
Insert 1 x nut into A58.



Step 15b



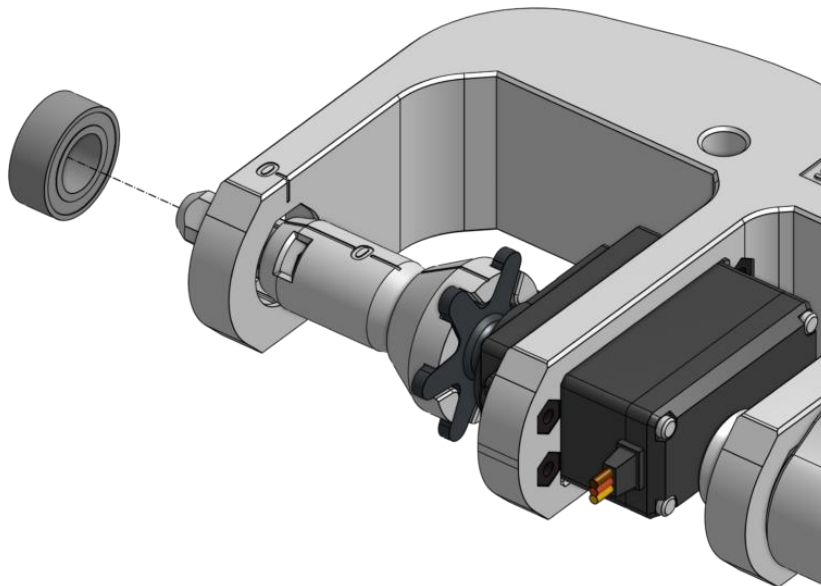
Then insert A58 into the previous assembly and make sure the lines align with „0“.



Step 16



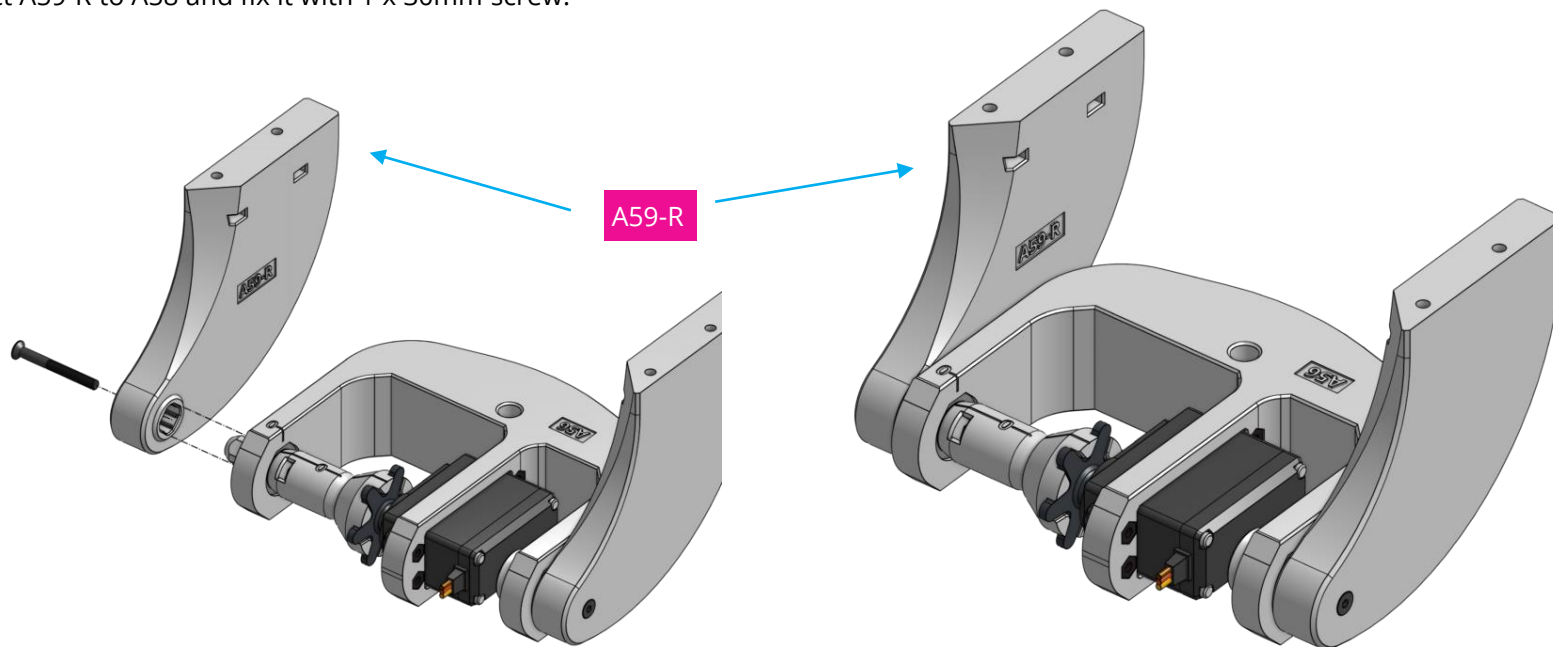
Insert 1 x M03 ballbearing onto A58.



Step 17



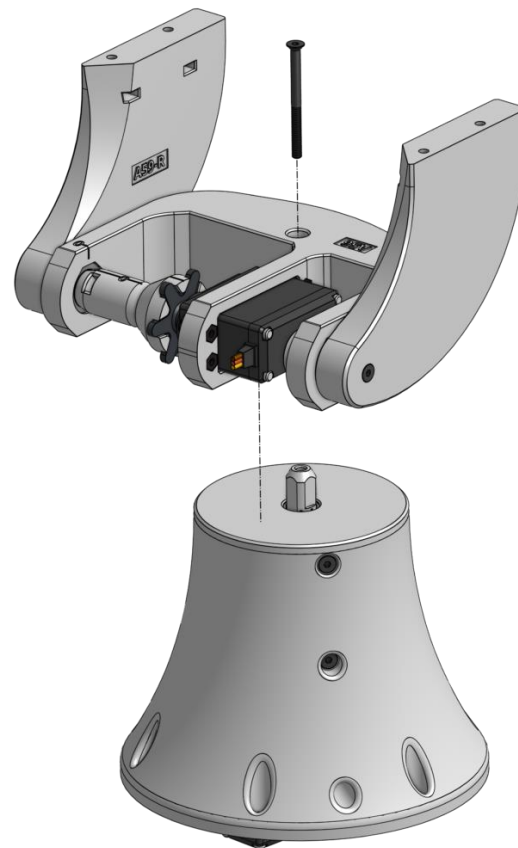
Connect A59-R to A58 and fix it with 1 x 30mm screw.



Step 18



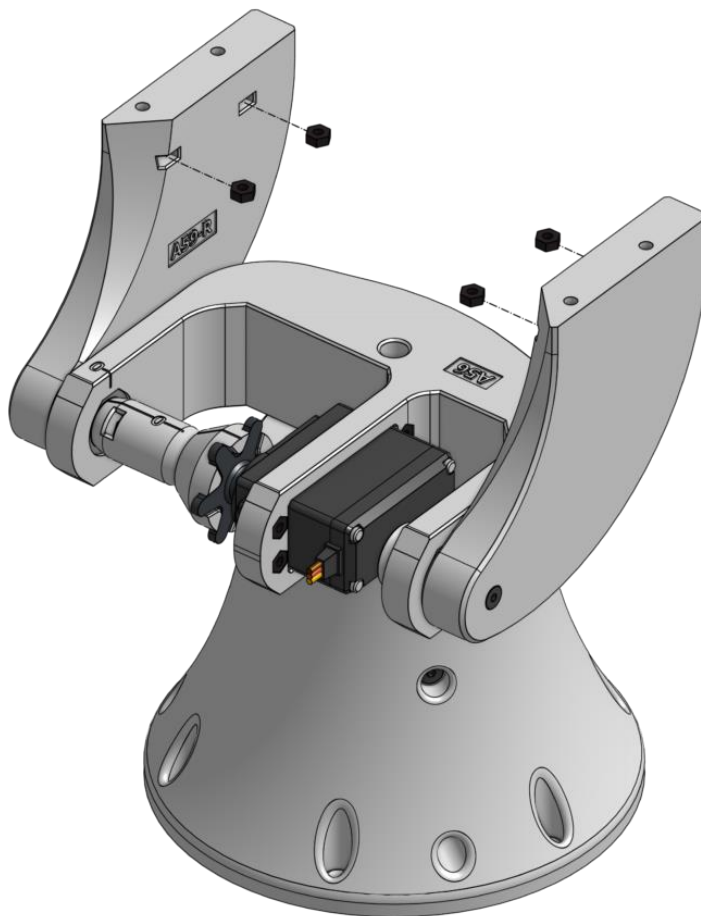
Connect the previous assembly to the assembly from before using 1 x 40mm screw.



Step 19



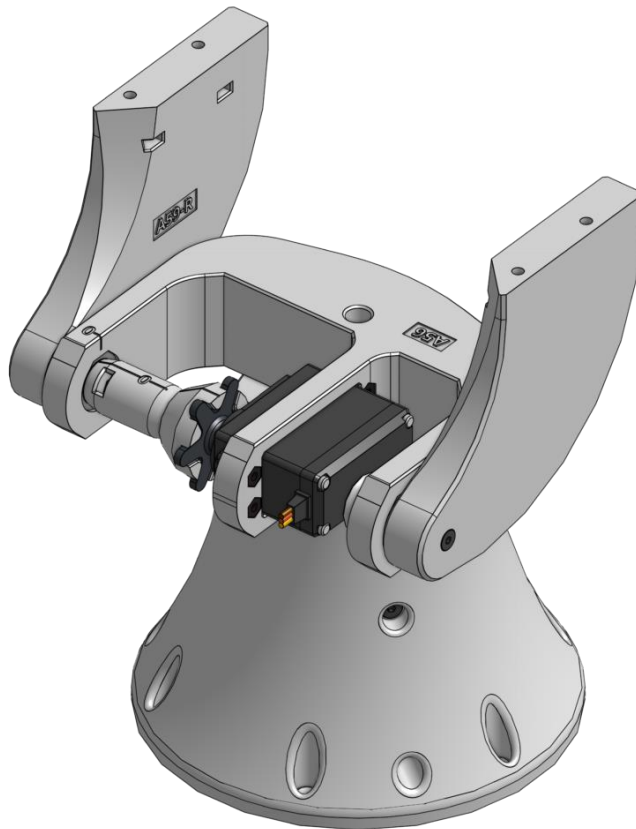
Place 4 x nuts in the shown spots of A59-R and A59-L.



Congratulations



You did a great job, the neck is assembled!



Do you need support?



Or do you need our pib.Box with all non-printable parts?

Or maybe you have some new ideas and improvements?

Please contact us.



team@pib.rocks
Send us an email.



discord.com/invite/GRdpYeDu7P
Join us on Discord.



shop.pib.rocks
Order non-printable parts for pib.