



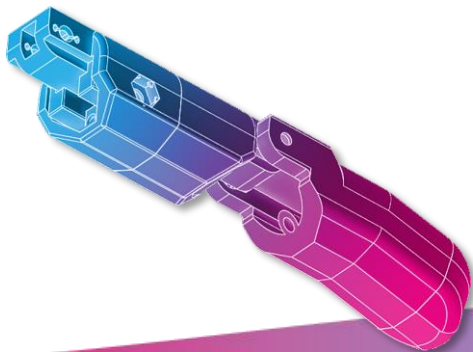
How to build your robot

www.pib.rocks/build



assembly instructions for:

FINGER



You
Print
Build
Develop

your own robot!

Printable parts



Pib's finger consists of **5 printable parts** and is assembled in **5 steps**. For one hand, you should build 4 identical fingers and one thumb (shown in separate tutorial).

In order to construct the finger, you will need to print the 5 finger parts as seen in the table.

Please note: For better readability we use the abbreviations in the tutorial: D05 instead of D05-Finger_proximal_lower.

Printable parts

D05-Finger_proximal_lower

D06-Finger_proximal_bracket

D07-Finger_proximal_upper

D08-Finger_distal

D09-Finger_tip

Non-printable parts



You will also need the following non-printable parts from our pib.Box Master.

If you do not have it yet, you can buy in our shop
<https://shop.pib.rocks>.

Non-printable parts

2x **S01** M3 nuts

1 x **S06** M3 16 mm screws

1 x **S08** M3 20 mm screws

1 x **M08** 20 mm metal rods

2 x **M01** Ballbearing_2x5x2,3

2 x **M10** Spring_TOR410L

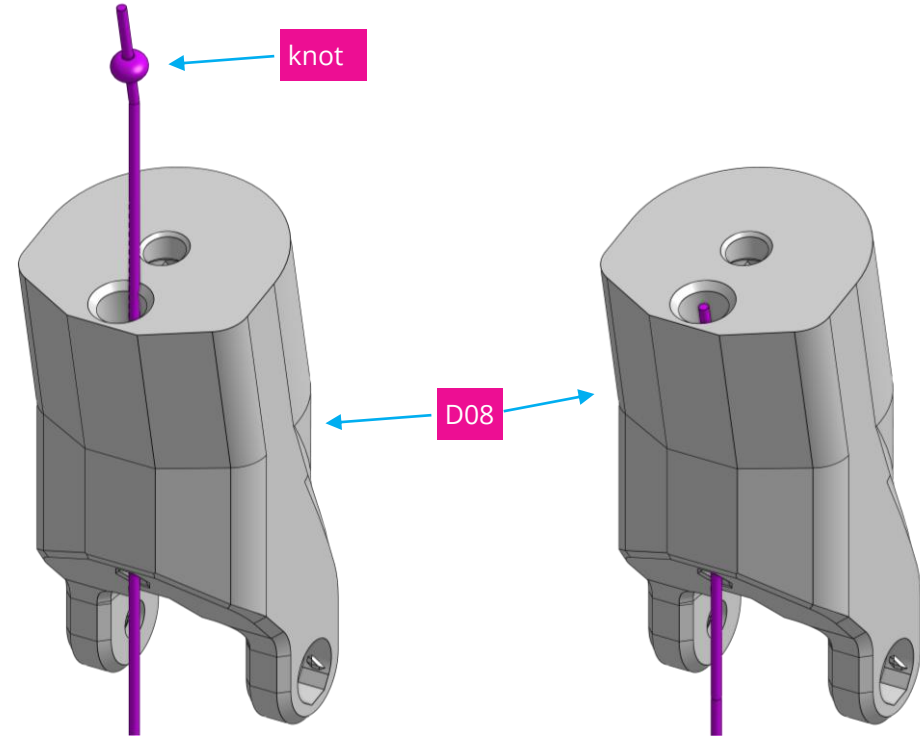
90 cm **Fluorocarbon string**

Step 1



Cut a piece of 90 cm length of the fluorocarbon string and insert it into D08 as shown in the picture.

Create a simple knot at the end. Pull the wire to be inside the circular hole and cut off remaining thread end above the knot. At the end pull gently on the string to tighten the knot further.

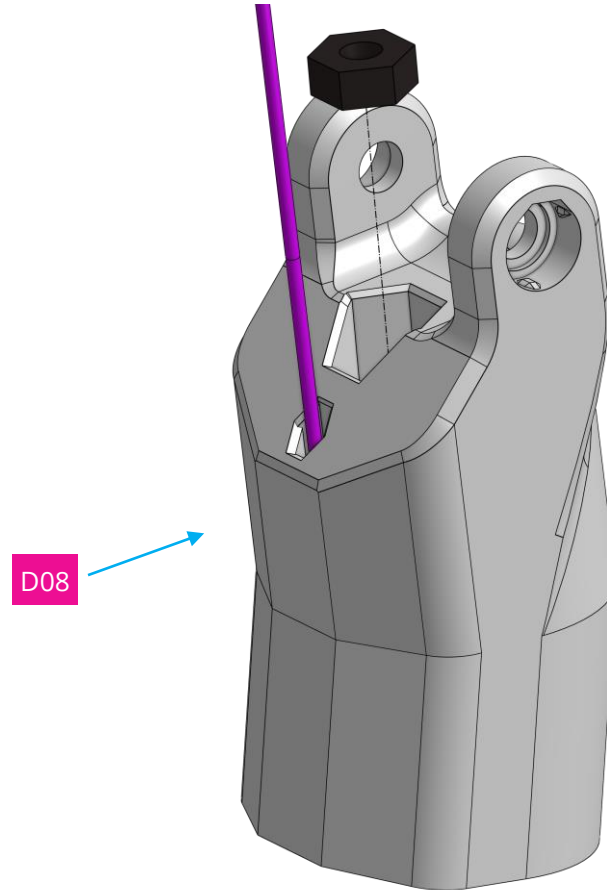


Step 2a



Insert 1x nut through the shown hole in D08 (all the way till the end).

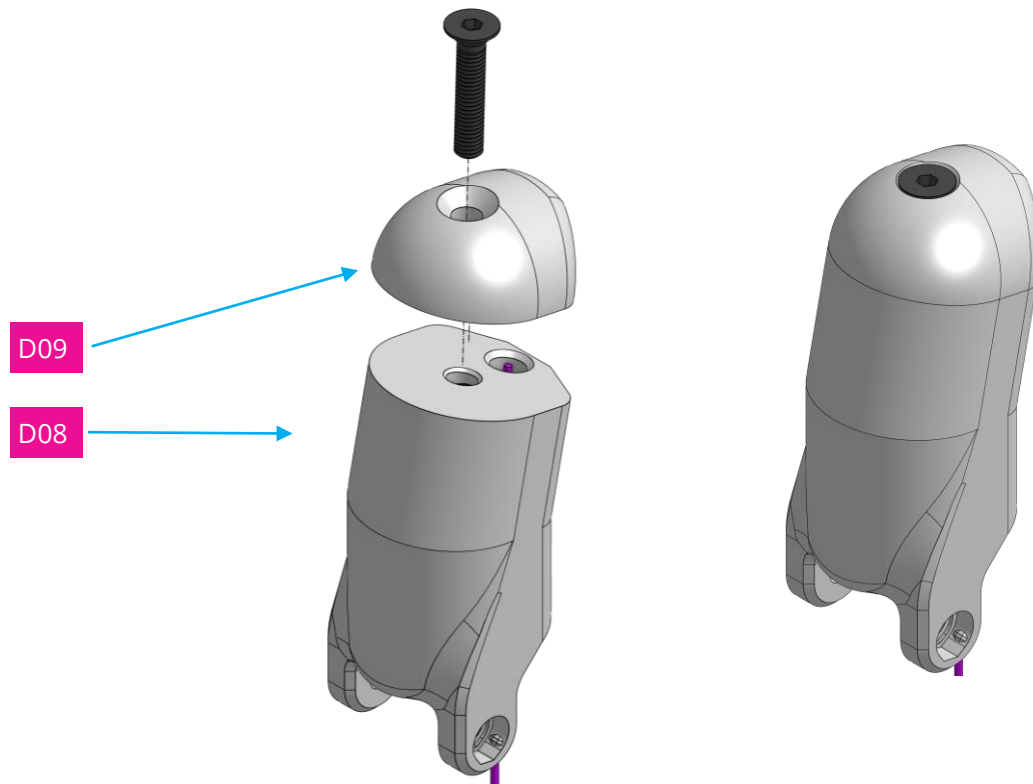
Our tip: use a small screw driver and insert it through the nut hole, then push the nut till the end of D08.



Step 2b



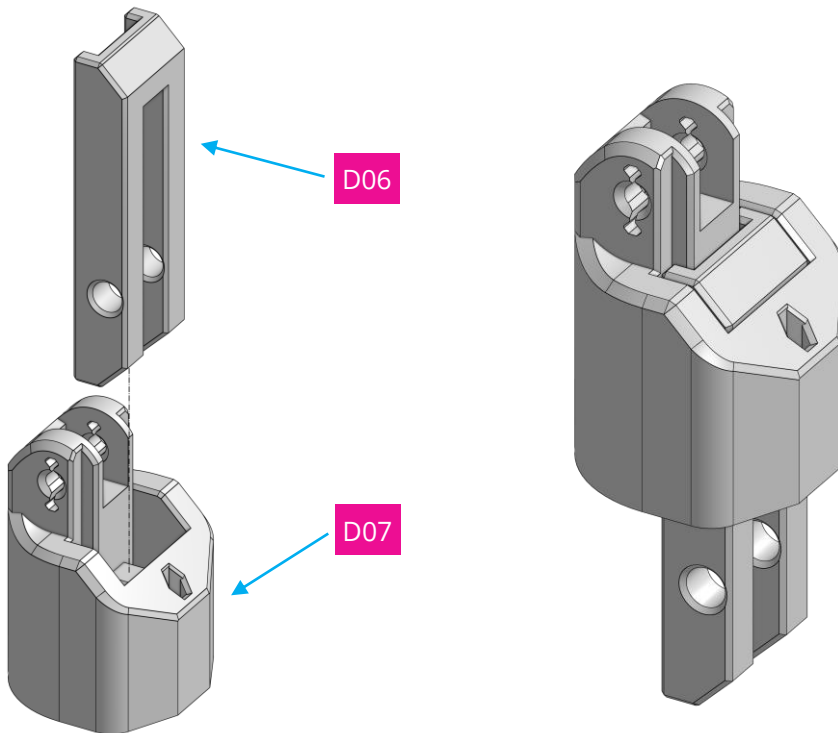
Connect D09 to D08 using 1x 16mm screw.



Step 3a



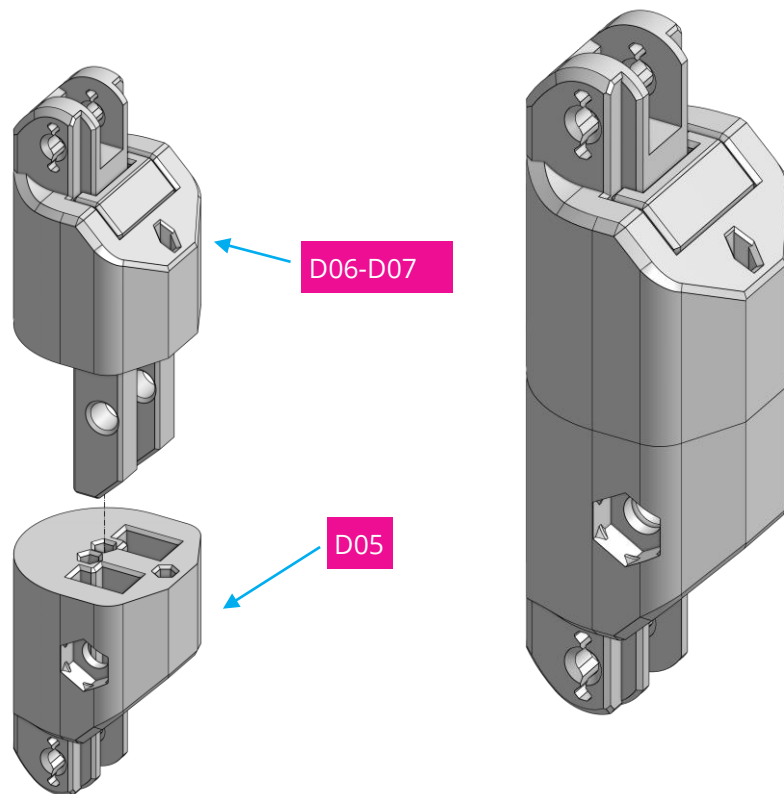
Insert D06 through the shown spot in D07.



Step 3b



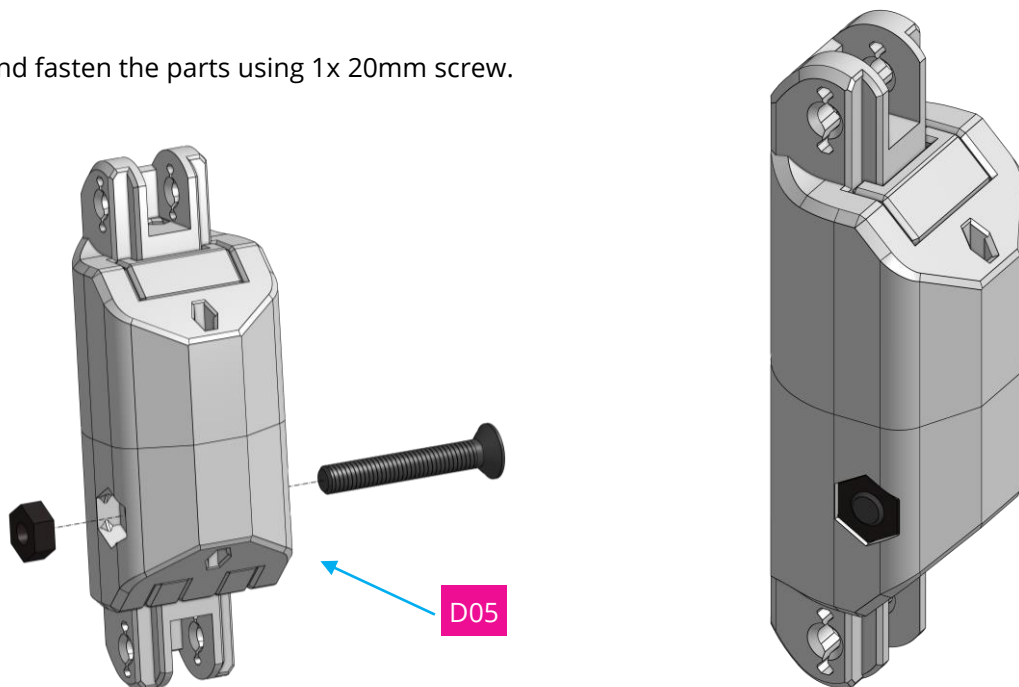
Insert the D06-D07 assembly from previous assembly to D05.



Step 3c



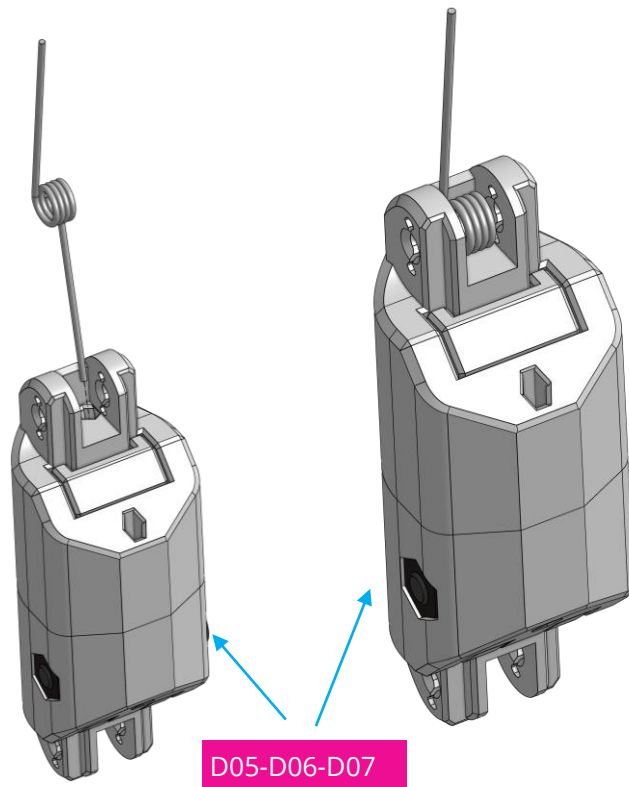
Place 1x nut through the shown spot in D05 and fasten the parts using 1x 20mm screw.



Step 4a



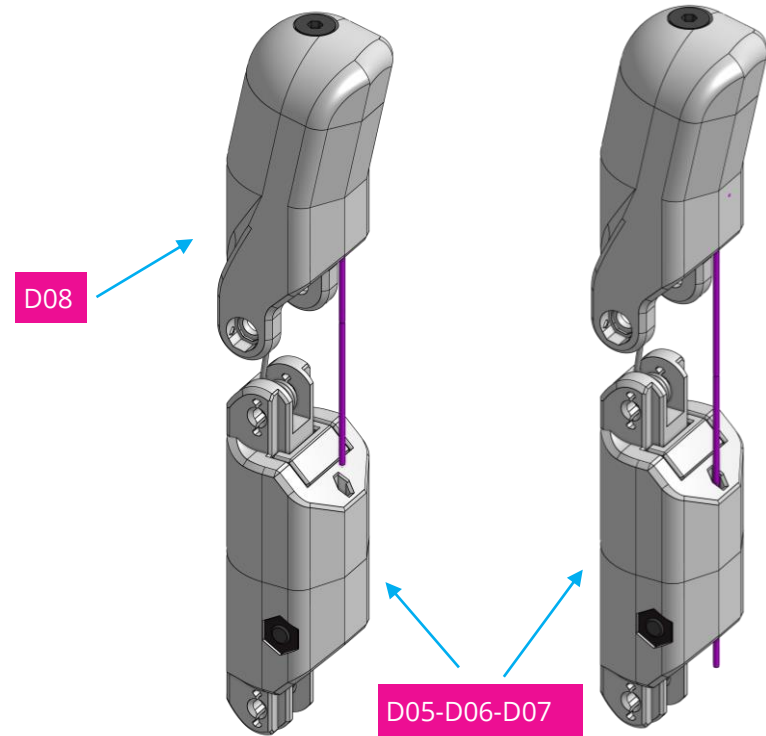
Place 1 x M10 spring through the shown spot in previous assembly from step 3.



Step 4b



Insert the fluorocarbon string coming out of D08 through the shown hole in previous assembly (D05-D06-D07).

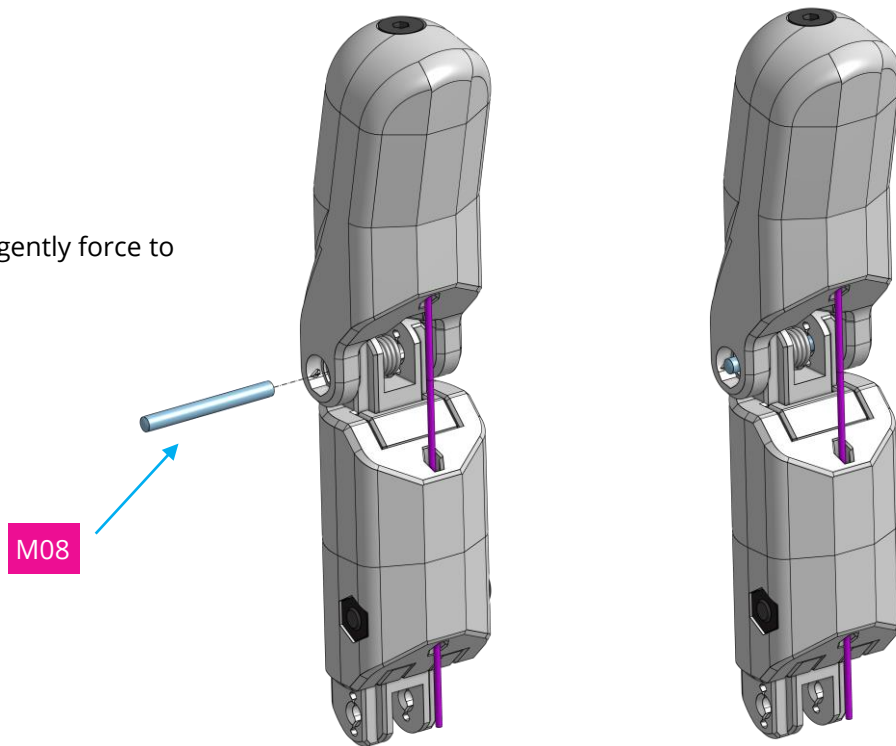


Step 4c



Use 1 x M08 rod to connect both assemblies.

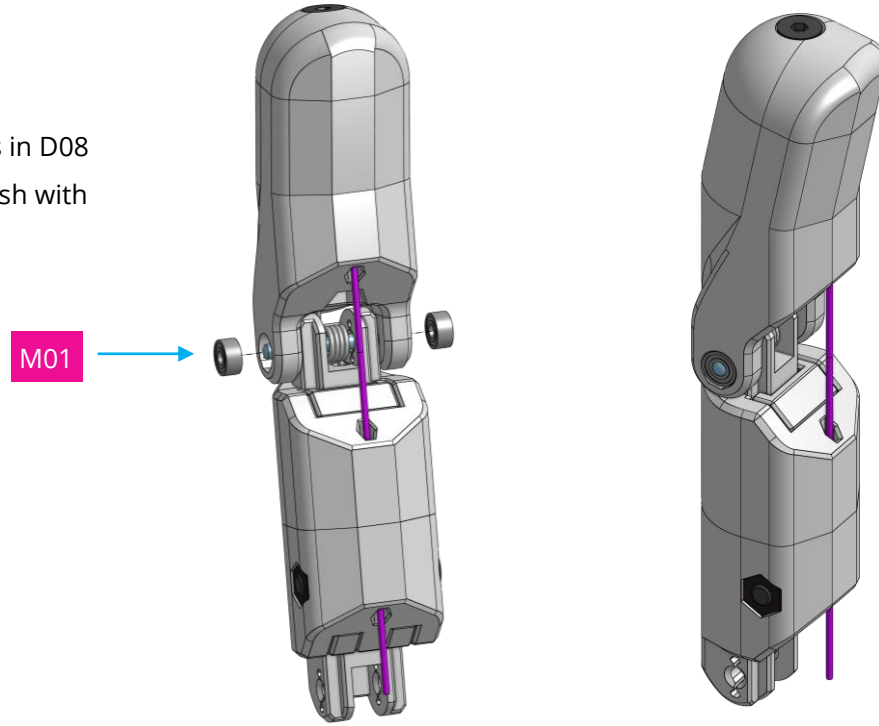
Please note: it may be necessary to apply some gently force to push the rod through.



Step 4d



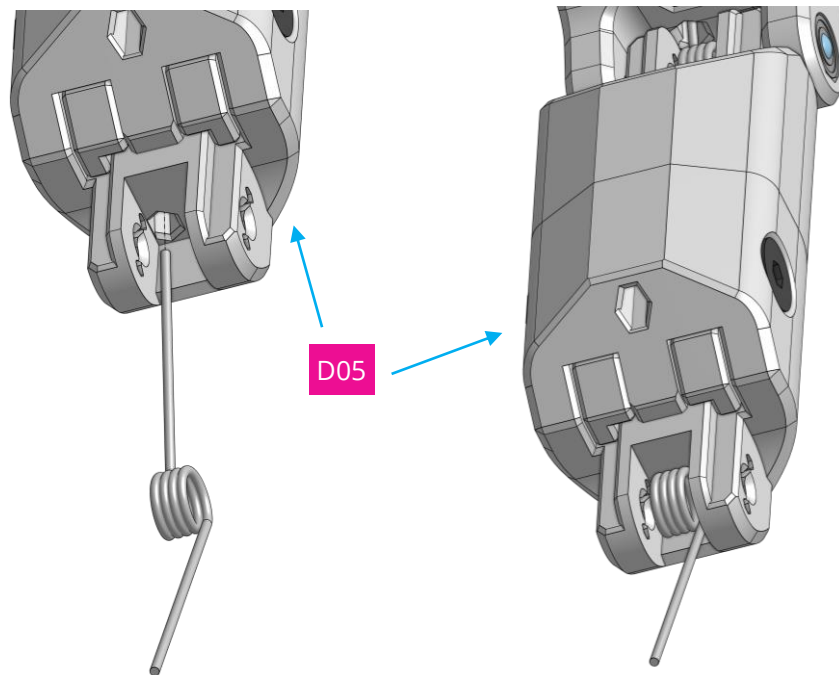
Insert 2 x M01 ball bearings through the shown spots in D08 and press on them till rod shows out and they are flush with D08.



Step 5



Insert 1 x M10 spring into D05.



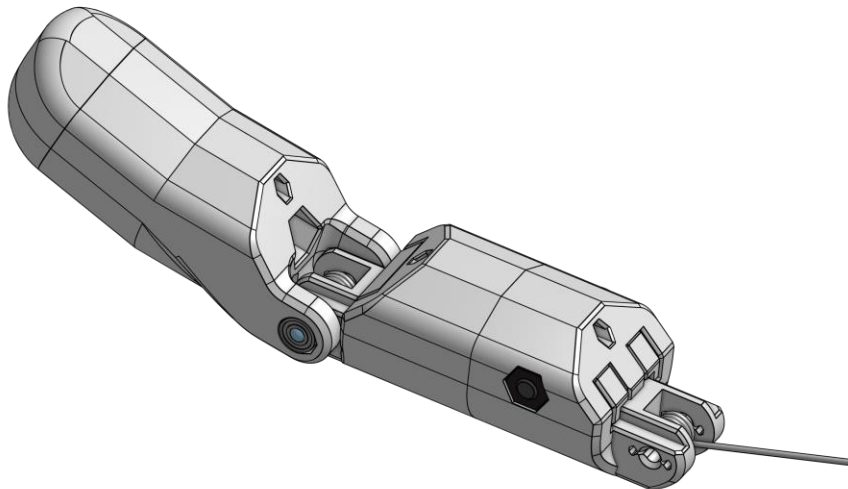
Congratulations



You did a great job!

Pib's finger is assembled.

Please repeat this tutorial 3 times for one hand of pib's.



Do you need support?



Or do you need our pib.Box with all non-printable parts?
Or maybe you have some new ideas and improvements?
Please contact us.



team@pib.rocks
Send us an email.



discord.com/invite/GRdpyeDu7P
Join us on Discord.



shop.pib.rocks
Order non-printable parts for pib.