



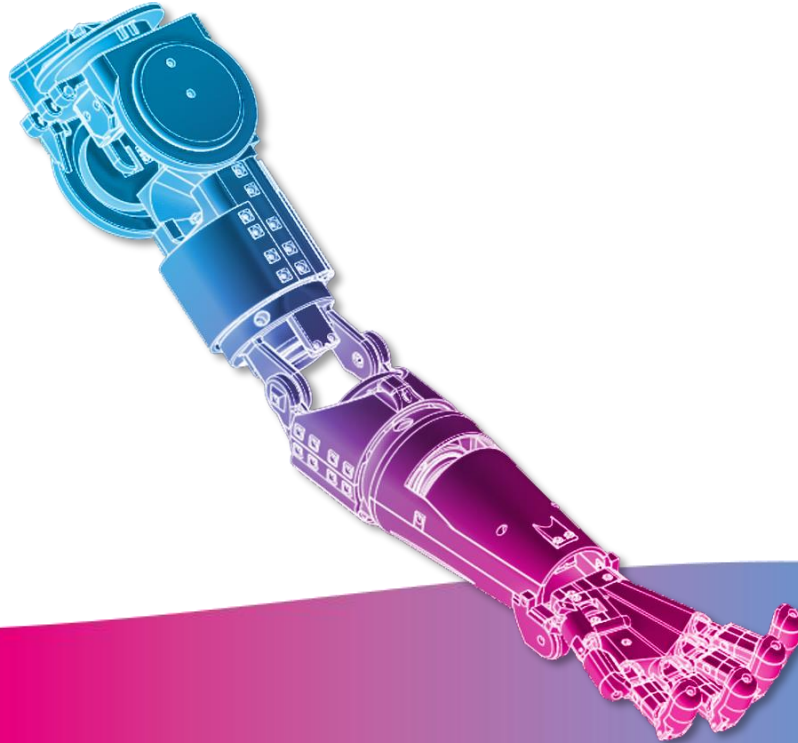
How to build your robot

www.pib.rocks/build



assembly instructions for:

HAND – ARM ASSEMBLY



You
Print
Build
Develop

your own robot!

Printable parts



In order to assemble the hand and the arm parts you will need to build the fingers, hand, forearm, elbow and shoulder joint first.

You can find all our tutorials on pib.rocks/build

Printable parts

2 x **C16**-Elbow_joint_connector

Tutorials on pib.rocks

<https://pib.rocks/build/how-to-build-pibs-finger/>

<https://pib.rocks/build/how-to-build-pibs-hand/>

<https://pib.rocks/build/how-to-build-pibs-elbow/>

<https://pib.rocks/build/how-to-build-pibs-forearm/>

<https://pib.rocks/build/how-to-build-pibs-shoulder-joint/>

Non-printable parts



You will also need the following non-printable parts from our pib.Box Master.

If you do not have it yet, you can buy in our shop
<https://shop.pib.rocks>.

Non-printable parts

2 x **S01** M3 nuts

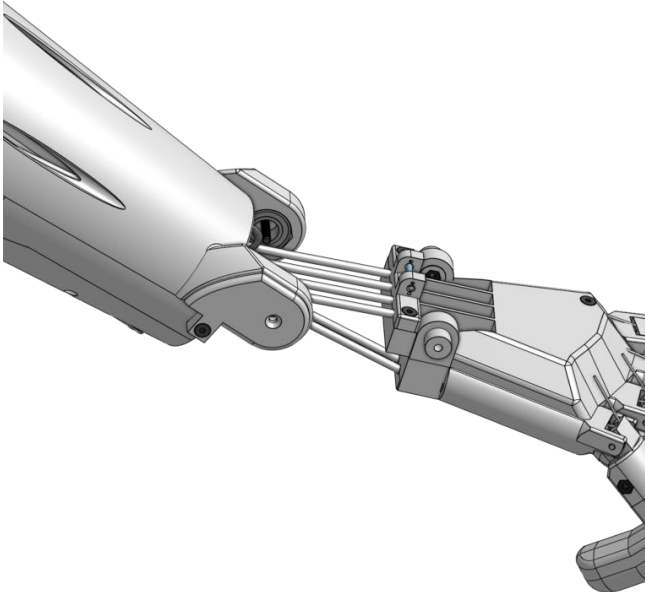
2 x **S08** M3 20 mm screws

4 x **S10** M3 25 mm screws

Step 1



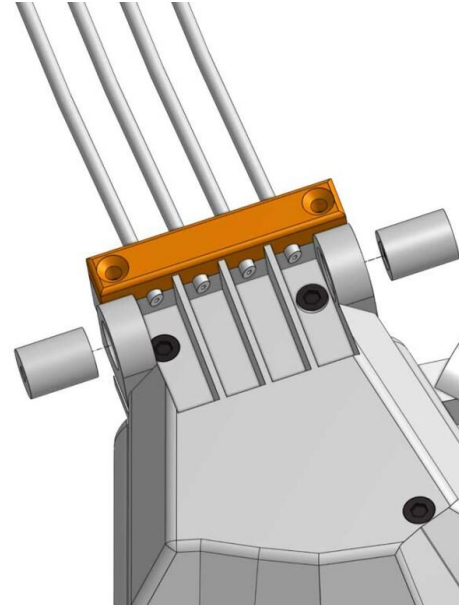
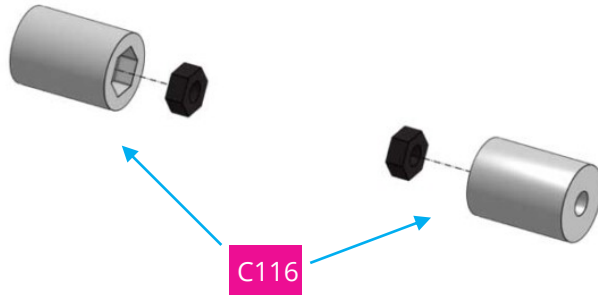
Pass the tubes coming out of the hand through the shown opening in the forearm.



Step 2a



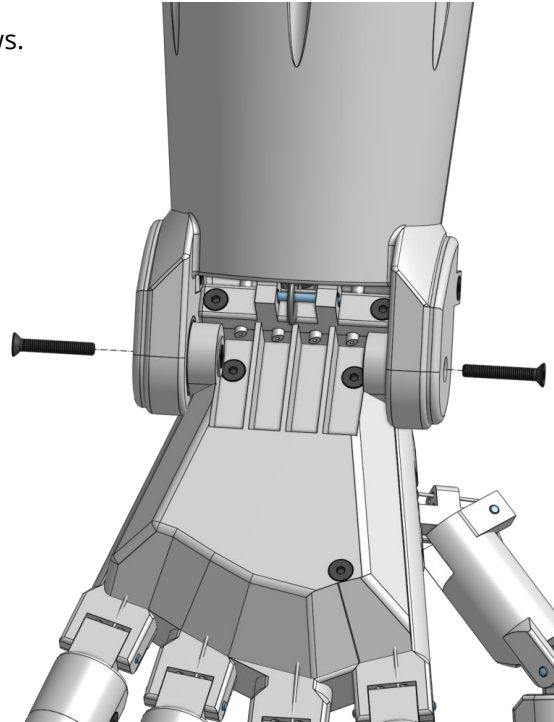
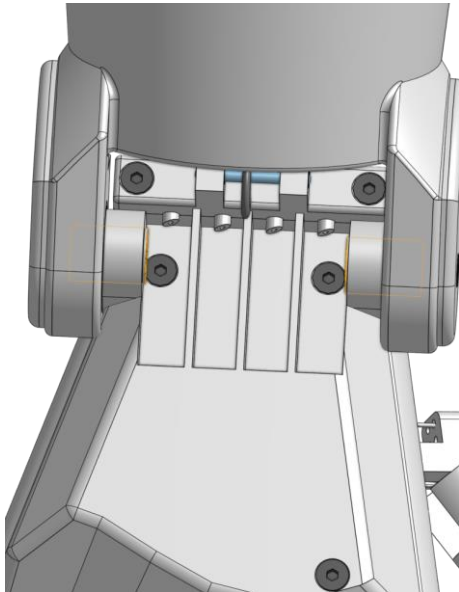
Use 2 x C16 to connect hand and forearm using 2 x nuts and 2 x 20mm screws.



Step 2b



Use 2 x C16 to connect hand and forearm using 2 x nuts and 2 x 20mm screws.

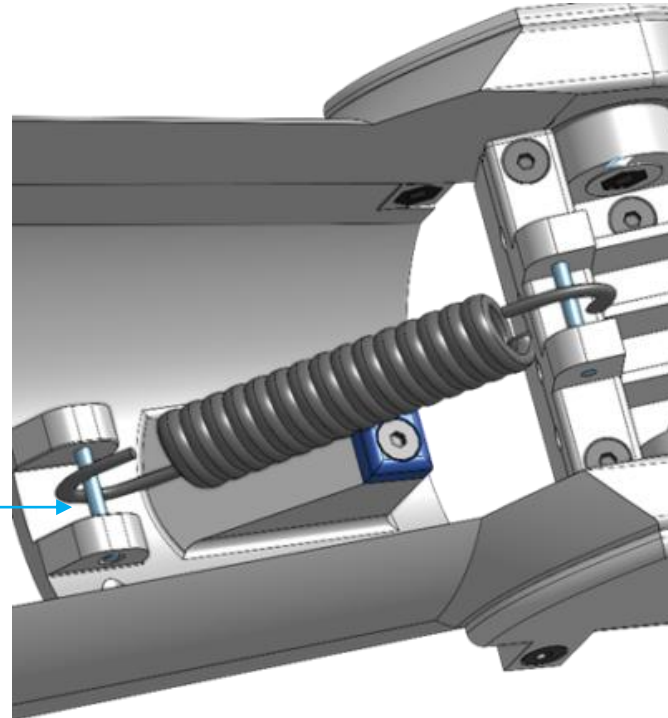


Step 3



In the hand assembly, we have attached a tension spring to the hand. Now, we attach the other end of the tension spring in the shown spot on the forearm by pushing the rod till the end.

Metal rod



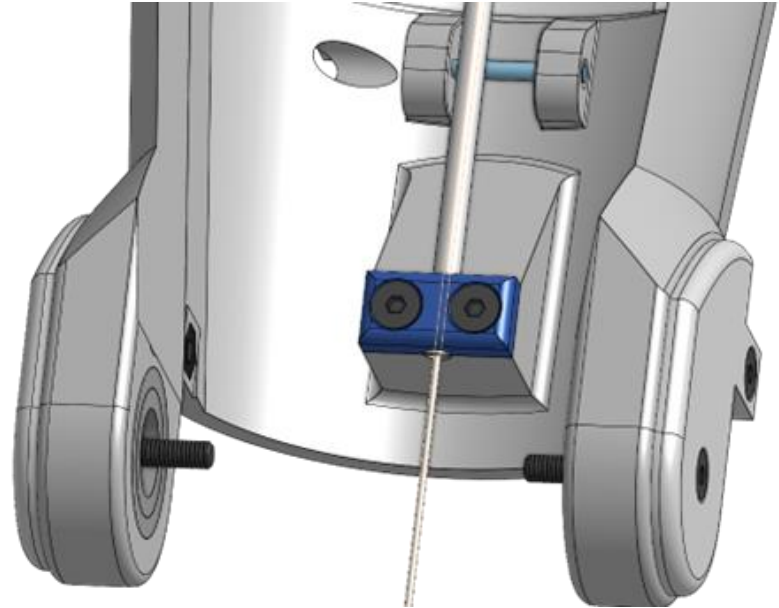
Step 4



In the hand assembly, we have added a fluorocarbon string and didn't connect it through the teflon tube.

Now, we will enter this string in the teflon tube.

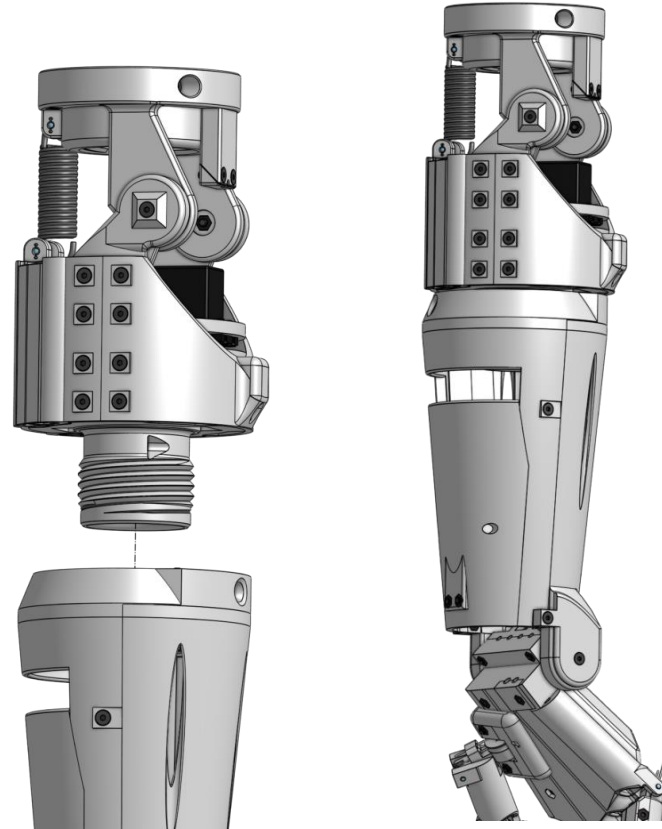
Please note: the hand is hidden for better visibility.



Step 5a



Connect the assembly of hand and forearm from the previous steps to the elbow assembly by rotating the forearm around the threaded part of the elbow.



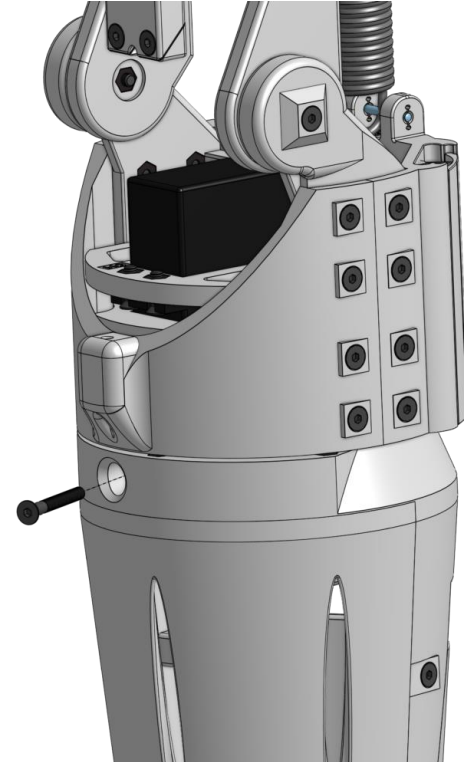
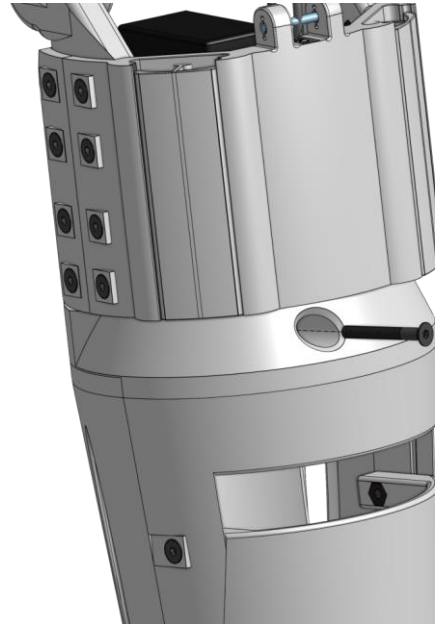
Step 5b



Connect the assembly of hand and forearm from the previous steps to the elbow assembly by rotating the forearm around the threaded part of the elbow.

Insert 2 x 25mm screws to fix the connection.

(Wires and tubes are hidden for better view).

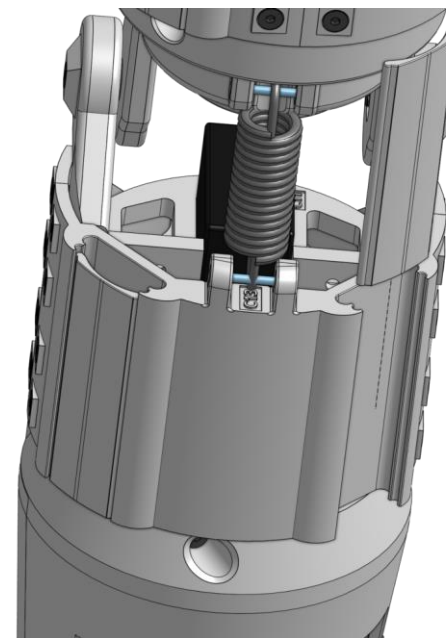
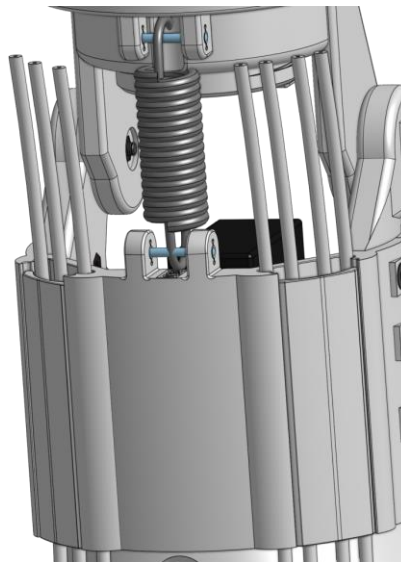


Step 6



Guide the tubes from the forearm assembly inside the channels in the elbow as shown.

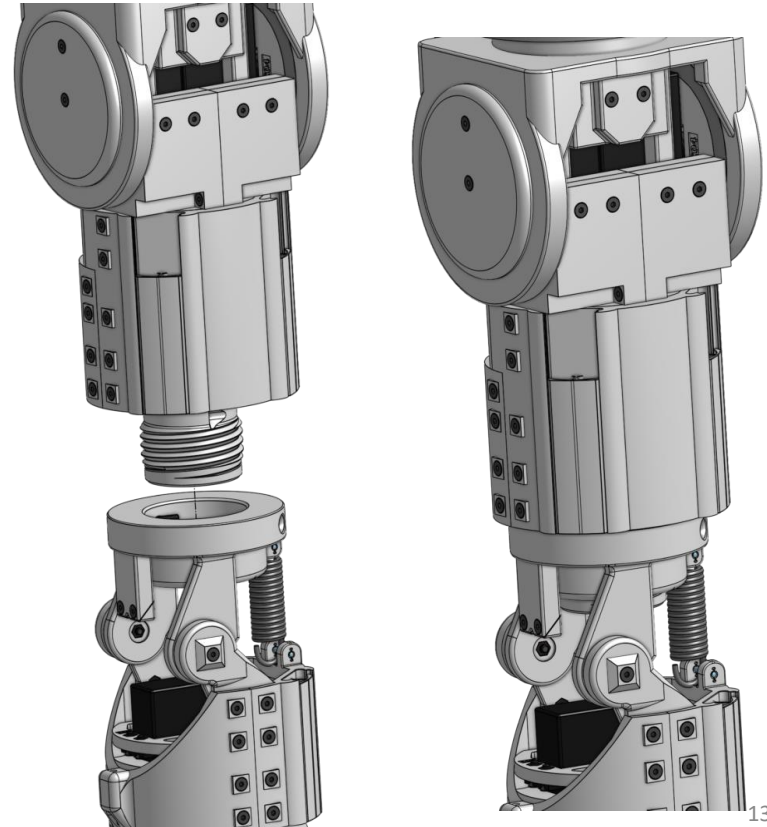
You can remove C31, if the insertion is too difficult.



Step 7a



Connect the assembly of hand, forearm and elbow from the previous steps to the shoulder assembly by rotation them around the threaded part of the shoulder.



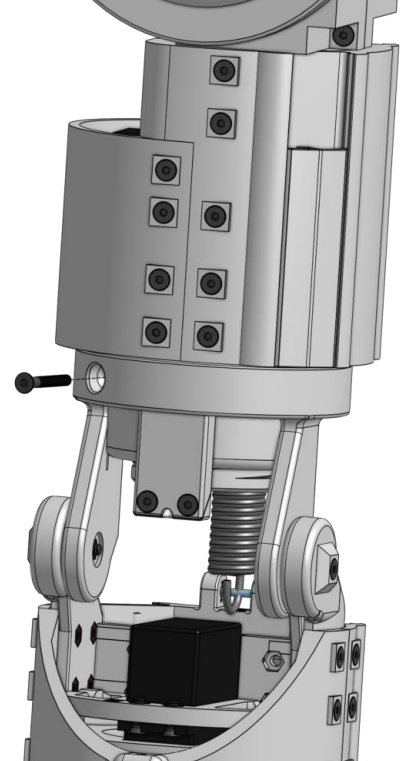
Step 7b



Connect the assembly of hand, forearm and elbow from the previous steps to the shoulder assembly by rotation them around the threaded part of the shoulder.

Insert 2 x 25 mm screws to fix the connection.

(Wires, tubes and clavicles are hidden for better view)

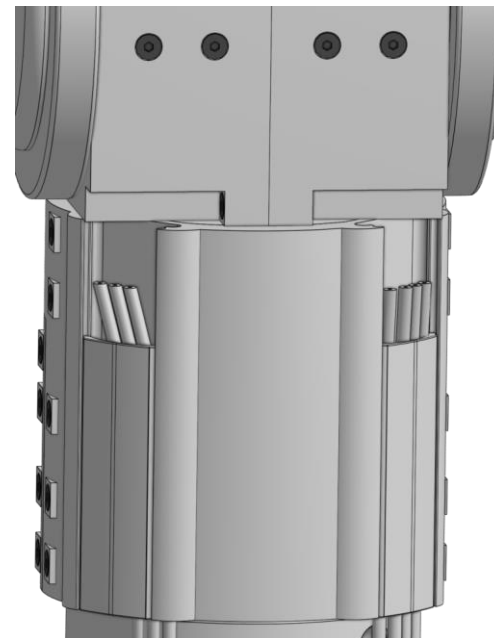
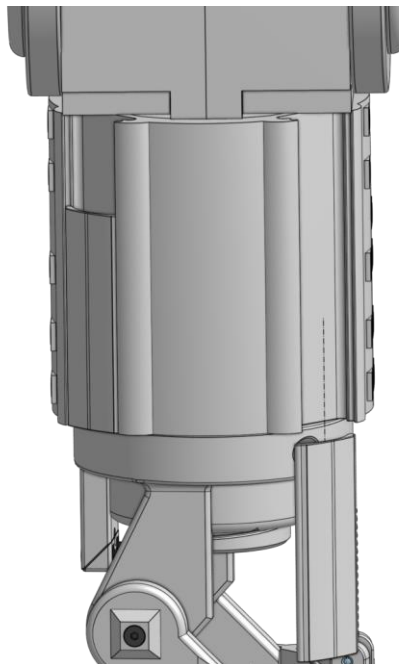


Step 8



Guide the tubes from the assembly inside the channels in the shoulder as shown.

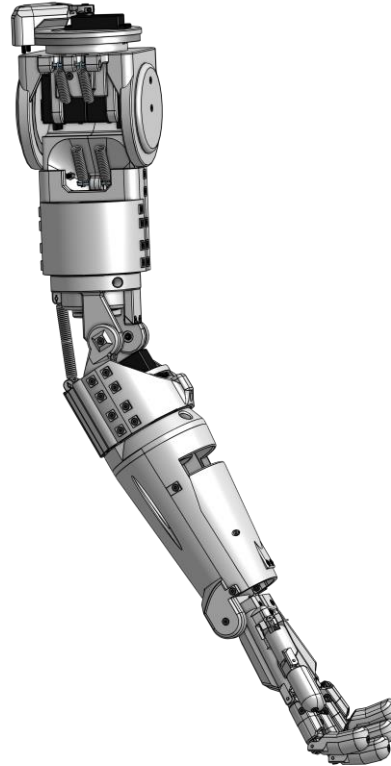
You can remove C31 by sliding them up, if the insertion is difficult.



Congratulations



You did a great job, the arm is assembled!



Do you need support?



Or do you need our pib.Box with all non-printable parts?

Or maybe you have some new ideas and improvements?

Please contact us.



team@pib.rocks
Send us an email.



discord.com/invite/GRdpyeDu7P
Join us on Discord.



shop.pib.rocks
Order non-printable parts for pib.