



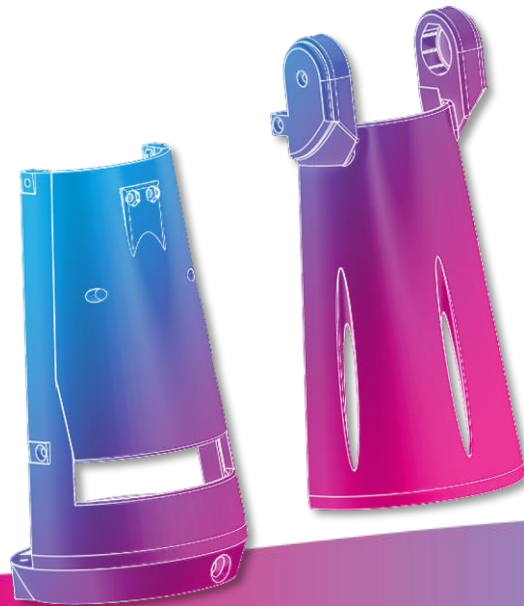
How to build your robot

www.pib.rocks/build



assembly instructions for:

FOREARM



You
Print
Build
Develop

your own robot!

Printable parts



Pib's forearm consists of **6 printable parts** and is assembled in **6 steps**.

In order to construct the forearm, you will need to print the forearm parts as seen in the table.

Please note: For better readability we use the abbreviations in the tutorial: C18 instead of C18-Forearm_distal_bottom.

Printable parts

C18-Forearm_distal_bottom

C19-Forearm_distal_top

C20-Forearm_cover

C22-Forearm_connector_left

C23-Forearm_connector_right

C24-Forearm_tube_enclosure

Non-printable parts



You will also need the following non-printable parts from our pib.Box Master.

If you do not have it yet, you can buy in our shop
<https://shop.pib.rocks>.

Non-printable parts

11 x **S01** M3 nuts

4 x **S05** M3 12 mm screws

3 x **S08** M3 20 mm screws

2 x **S10** M3 25 mm screws

1 x **M08** 20 mm metal rods

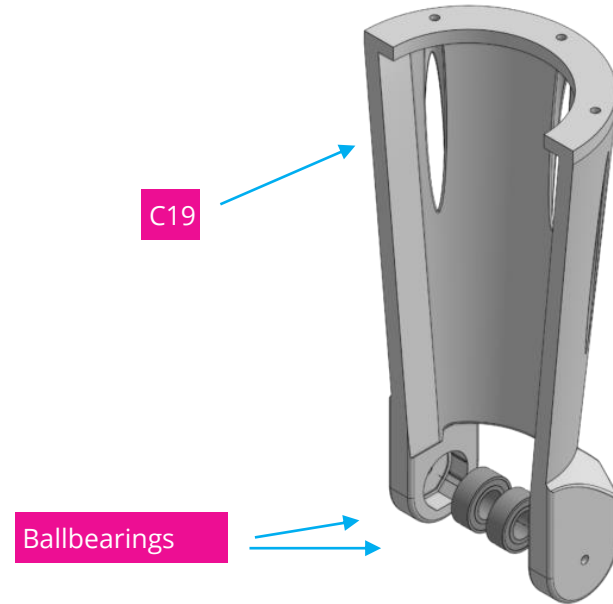
2 x **M03** medium sized ballbearings

60 cm Teflon tube

Step 1



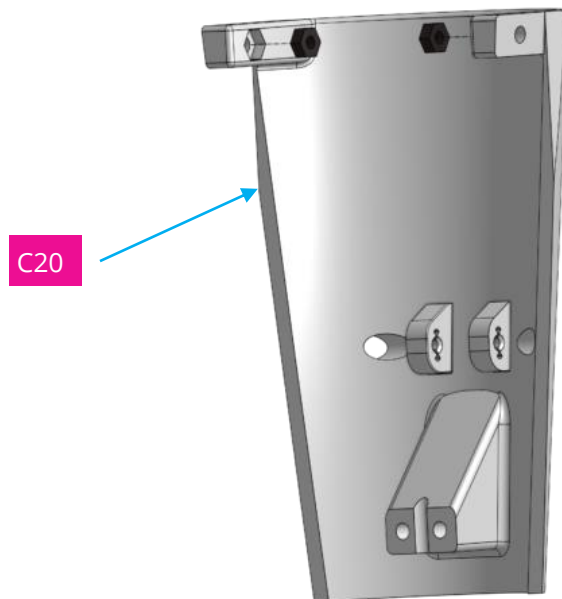
Place 2 medium sized ball bearings in the shown places of C19.



Step 2a



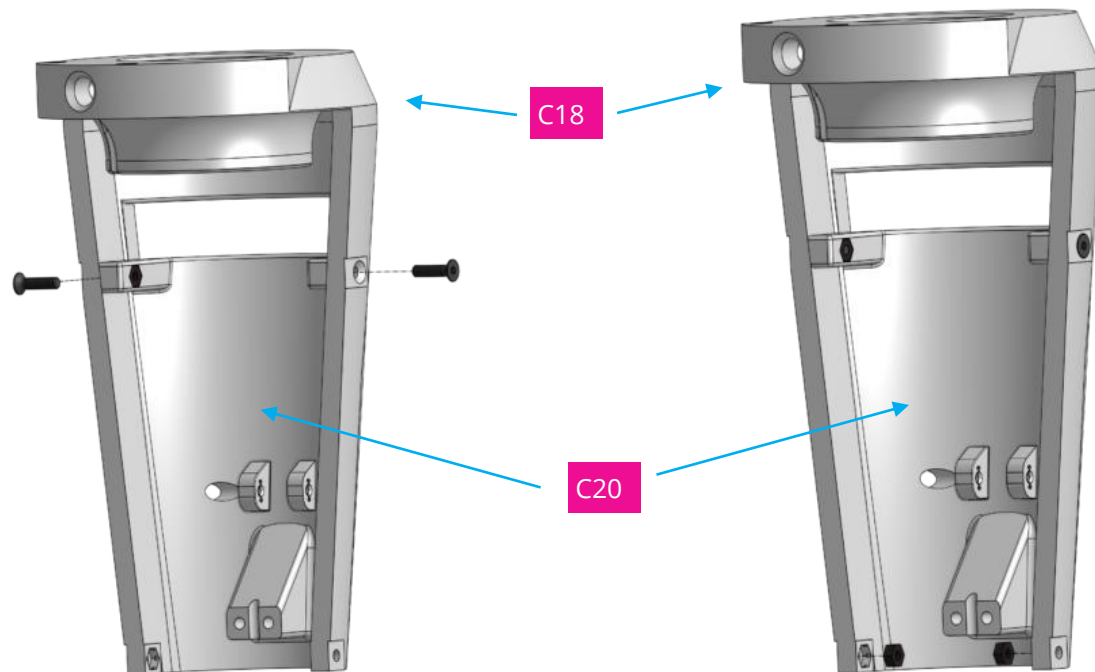
Place 2 x nuts in C20.



Step 2b



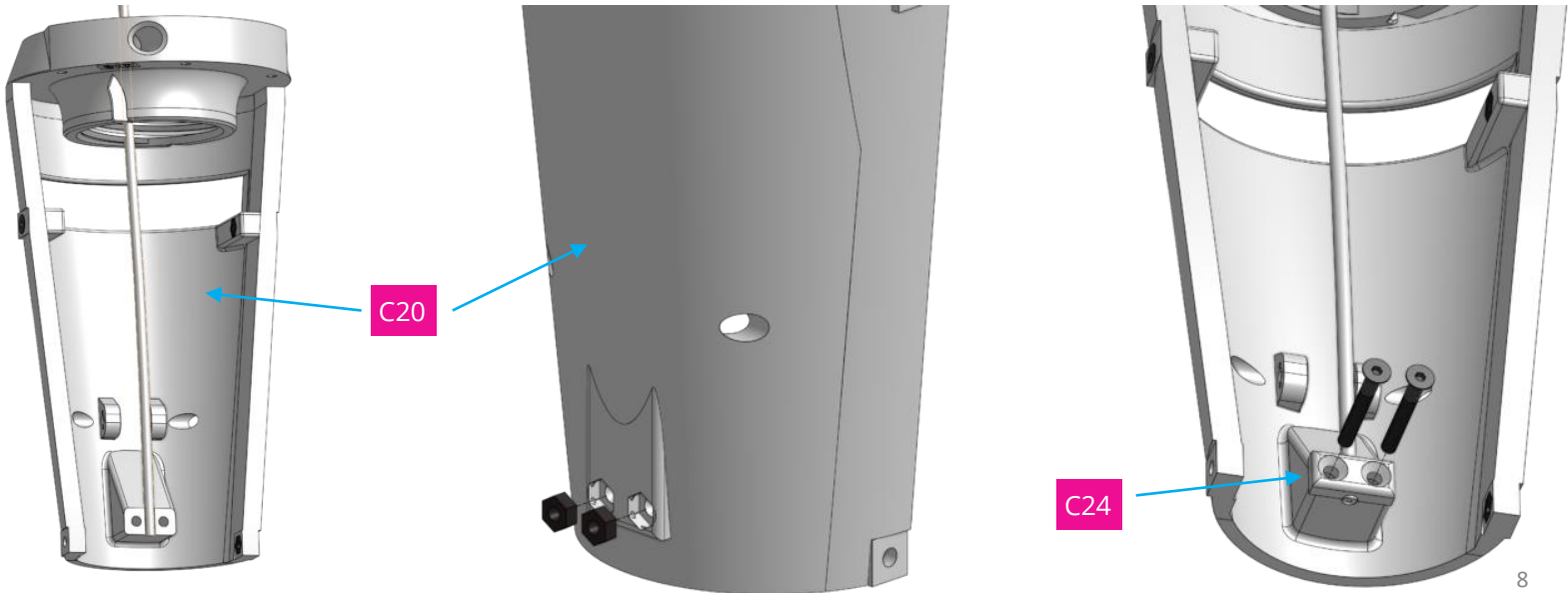
Use 2 x 12 mm screws to connect C18 to C20. Then place 2 x nuts in C18.



Step 3



Place the teflon tube in the shown spot and fix it by attaching C24 to C20 with 2 x nuts and 2 x 25 mm screws.



Step 4



Insert the metal rod through the shown hole with a tool, but only till half. A spring will be added later at this point, so the metal rod should only be installed halfway.

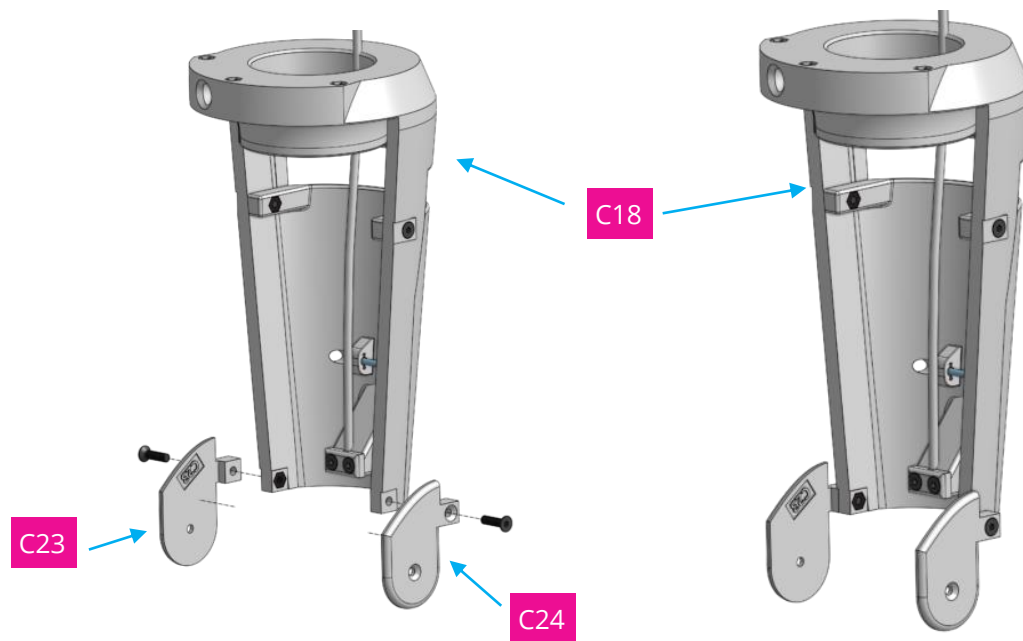
Please note: you may need to apply some gentle force at this point to get the metal rod to go in.



Step 5



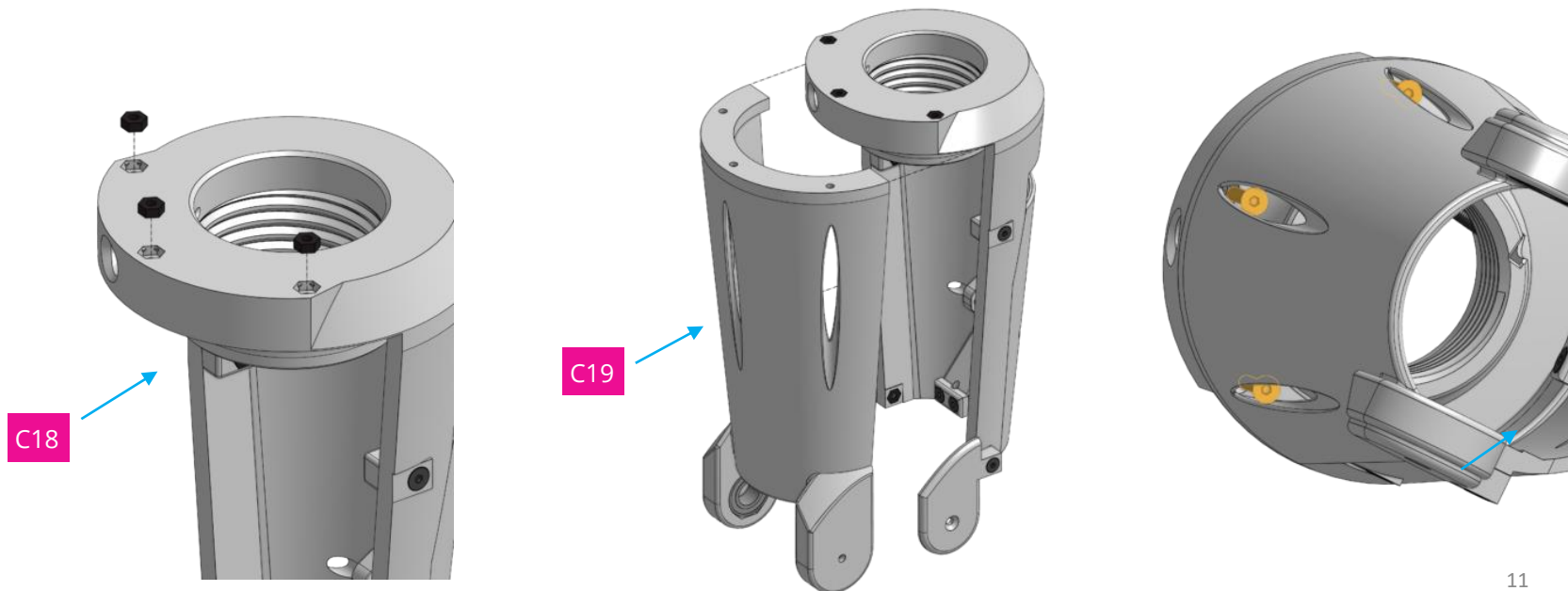
Place 2 x 12 mm screws in the shown spots to connect C22 and C23 with C18.



Step 6



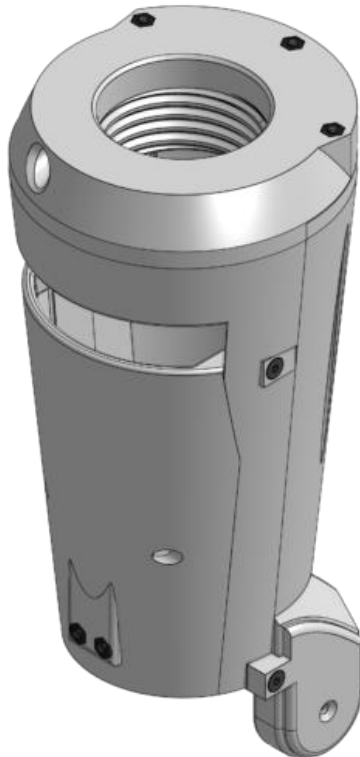
Place 3 x nuts in C18 and use 3 x 20 mm screw to connect C19 to C18.



Congratulations



You did a great job, the forearm is assembled!



Do you need support?



Or do you need our pib.Box with all non-printable parts?

Or maybe you have some new ideas and improvements?

Please contact us.



team@pib.rocks

Send us an email.



discord.com/invite/GRdpyeDu7P

Join us on Discord.



shop.pib.rocks

Order non-printable parts for pib.